



Chipsmall Limited consists of a professional team with an average of over 10 year of expertise in the distribution of electronic components. Based in Hongkong, we have already established firm and mutual-benefit business relationships with customers from,Europe,America and south Asia,supplying obsolete and hard-to-find components to meet their specific needs.

With the principle of “Quality Parts,Customers Priority,Honest Operation,and Considerate Service”,our business mainly focus on the distribution of electronic components. Line cards we deal with include Microchip,ALPS,ROHM,Xilinx,Pulse,ON,Everlight and Freescale. Main products comprise IC,Modules,Potentiometer,IC Socket,Relay,Connector.Our parts cover such applications as commercial,industrial, and automotives areas.

We are looking forward to setting up business relationship with you and hope to provide you with the best service and solution. Let us make a better world for our industry!



Contact us

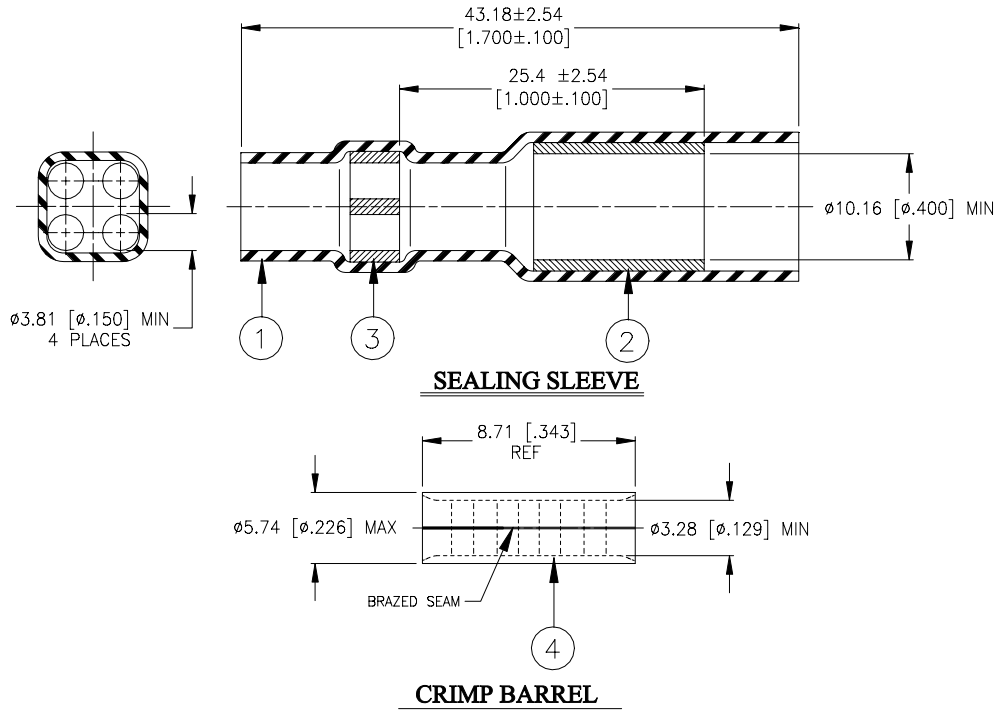
Tel: +86-755-8981 8866 Fax: +86-755-8427 6832

Email & Skype: info@chipsmall.com Web: www.chipsmall.com

Address: A1208, Overseas Decoration Building, #122 Zhenhua RD., Futian, Shenzhen, China



SPECIFICATION CONTROL DRAWING



MATERIALS

1. INSULATION SLEEVE: Heat-shrinkable, transparent blue, radiation cross-linked modified polyvinylidene fluoride.
2. MELTABLE INSERT: Low outgassing immersion resistant thermoplastic, color-natural.
3. MULTI-HOLE INSERT: Low outgassing immersion resistant thermoplastic, color-yellow.
4. CRIMP BARREL: Base Metal: Copper alloy per ASTM B-152, Annealed.
Plating: Tin-plated per ASTM-B545.
Wire Size Range: 2.62 – 6.64 mm² [5,180 – 13,100 CMA] 12 – 10 AWG, Solid or Stranded.

APPLICATION

1. This kit is designed to make an immersion resistant stub splice in up to 4 wires having insulation diameters less than 3.81 [0.150] or up to 8 wires having insulation diameters less than 1.91 [0.075] and total conductor Circular Mil Area (CMA) between 5,180 and 13,100.
2. Use AMP crimp tool 49935 (or equivalent tool) to install crimp barrel. Sealing sleeve may be installed with convection heaters.
3. Strip length on wires shall be 10.80 ± 1.27 [0.425 ± 0.050].

tyco <i>Electronics</i>		Tyco Electronics Corporation 300 Constitution Drive, Menlo Park, CA. 94025, U.S.A.		Raychem		TITLE: STUB SPLICE SEALING SYSTEM, 4-WIRE SPLICER TIN-PLATED, 10 AWG PARALLEL	
Unless otherwise specified dimensions are in millimeters. [Inches dimensions are shown in brackets]				DOCUMENT NO.: D-436-0129			
TOLERANCES: 0.00 N/A 0.0 N/A 0 N/A	ANGLES: N/A ROUGHNESS IN MICRON	Tyco Electronics reserves the right to amend this drawing at any time. Users should evaluate the suitability of the product for their application.		PROD. REV.: A	DOC. ISSUE: 2	DATE: 10-Oct-05	
PREPARED BY: mforonda	DCR NUMBER: D050449	REPLACES: D030552		CAGE CODE: 06090	SCALE: ---	SIZE: A	SHEET: 1 of 1

© 2005 Tyco Electronics Corporation. All rights reserved.

If this document is printed it becomes uncontrolled. Check for the latest revision.