



Chipsmall Limited consists of a professional team with an average of over 10 year of expertise in the distribution of electronic components. Based in Hongkong, we have already established firm and mutual-benefit business relationships with customers from,Europe,America and south Asia,supplying obsolete and hard-to-find components to meet their specific needs.

With the principle of “Quality Parts,Customers Priority,Honest Operation,and Considerate Service”,our business mainly focus on the distribution of electronic components. Line cards we deal with include Microchip,ALPS,ROHM,Xilinx,Pulse,ON,Everlight and Freescale. Main products comprise IC,Modules,Potentiometer,IC Socket,Relay,Connector.Our parts cover such applications as commercial,industrial, and automotives areas.

We are looking forward to setting up business relationship with you and hope to provide you with the best service and solution. Let us make a better world for our industry!



## Contact us

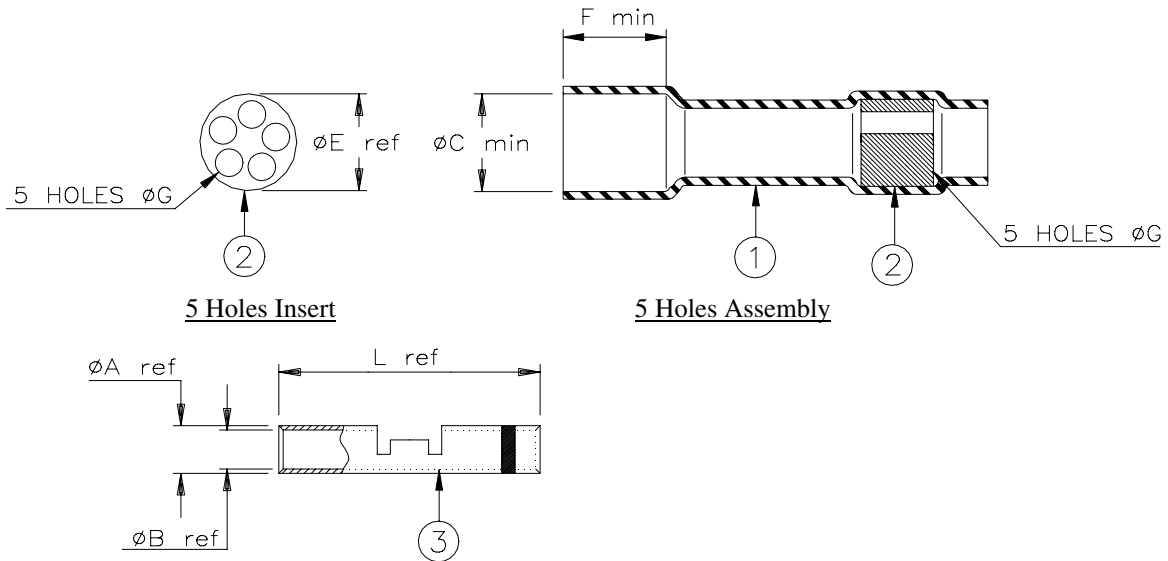
Tel: +86-755-8981 8866 Fax: +86-755-8427 6832

Email & Skype: info@chipsmall.com Web: www.chipsmall.com

Address: A1208, Overseas Decoration Building, #122 Zhenhua RD., Futian, Shenzhen, China



# SPECIFICATION CONTROL DRAWING



Product Revision		Crimp Splice	Product Dimensions				Stripe Color	$\phi C$ min	$\phi G$ min	E ref	F min
Product Name			L ref	A ref	B ref	CMA Range					
D-436-0148	A	D-609-06	12.7 (0.500)	1.95 (0.077)	1.20 (0.047)	300-1510	7.60 (0.300)	2.00 (0.078)	7.50 (0.295)	8.90 (0.350)	
D-436-0149	A	D-609-07	14.6 (0.575)	2.65 (0.104)	1.65 (0.066)	779-2880					
D-436-0150	A	D-609-08	14.6 (0.575)	3.80 (0.150)	2.55 (0.100)	1900-6755					Yellow

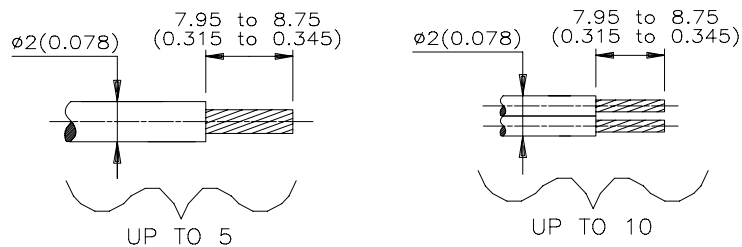
## MATERIALS

1. INSULATION SLEEVE: Heat-shrinkable, transparent blue, radiation cross-linked modified polyvinylidene fluoride.
2. MELTABLE RINGS: Thermally stabilized thermoplastic. Color: natural.
3. CRIMP BARREL: Tin plated copper alloy. Color: see table.

## APPLICATION

1. These controlled sealing systems are designed to make an immersion resistant multi-wire in-line splices made with wires having tin or silverplated conductors and insulations rated for at least +125°C.
2. Parts may be used to splice up to 5 wires having an insulation less than  $\phi 2$  (0.078) or up to 10 wires (2 per hole) with insulation less than  $\phi 1$  (0.039).
3. Temperature range: -55°C to +150°C.
4. For assembly instruction, see Raychem Installation Procedure RPIP-826-00.

For best results, prepare the cable as shown:



\* A trademark of Raychem Corporation.

<b>Raychem</b>		THERMOFIT DEVICES		Raychem Corporation 300 Constitution Drive Menlo Park, CA 94025 USA		TITLE: <b>IN-LINE CRIMP SPLICE DEVICE IMMERSION RESISTANT</b>			
UNLESS OTHERWISE SPECIFIED DIMENSIONS ARE IN MILLIMETERS. INCHES DIMENSIONS ARE BETWEEN BRACKETS.						DOCUMENT NO.: <b>D-436-0148/-0150</b>			
TOLERANCES: 0.00 N/A 0.0 N/A 0 N/A		ANGLES: N/A		Raychem reserves the right to amend this drawing at any time. Users should evaluate the suitability of the product for their application.		DCR NUMBER: D981042		REPLACES: D436014X	
DRAWN BY: M. FORONDA		DATE: 06/23/98				PROD. REV. SEE TABLE		DOC ISSUE: 3	
						SIZE: A		SHEET: 1 of 1	

If this document is printed it becomes uncontrolled. Check for the latest revision