



Chipsmall Limited consists of a professional team with an average of over 10 year of expertise in the distribution of electronic components. Based in Hongkong, we have already established firm and mutual-benefit business relationships with customers from,Europe,America and south Asia,supplying obsolete and hard-to-find components to meet their specific needs.

With the principle of “Quality Parts,Customers Priority,Honest Operation,and Considerate Service”,our business mainly focus on the distribution of electronic components. Line cards we deal with include Microchip,ALPS,ROHM,Xilinx,Pulse,ON,Everlight and Freescale. Main products comprise IC,Modules,Potentiometer,IC Socket,Relay,Connector.Our parts cover such applications as commercial,industrial, and automotives areas.

We are looking forward to setting up business relationship with you and hope to provide you with the best service and solution. Let us make a better world for our industry!



Contact us

Tel: +86-755-8981 8866 Fax: +86-755-8427 6832

Email & Skype: info@chipsmall.com Web: www.chipsmall.com

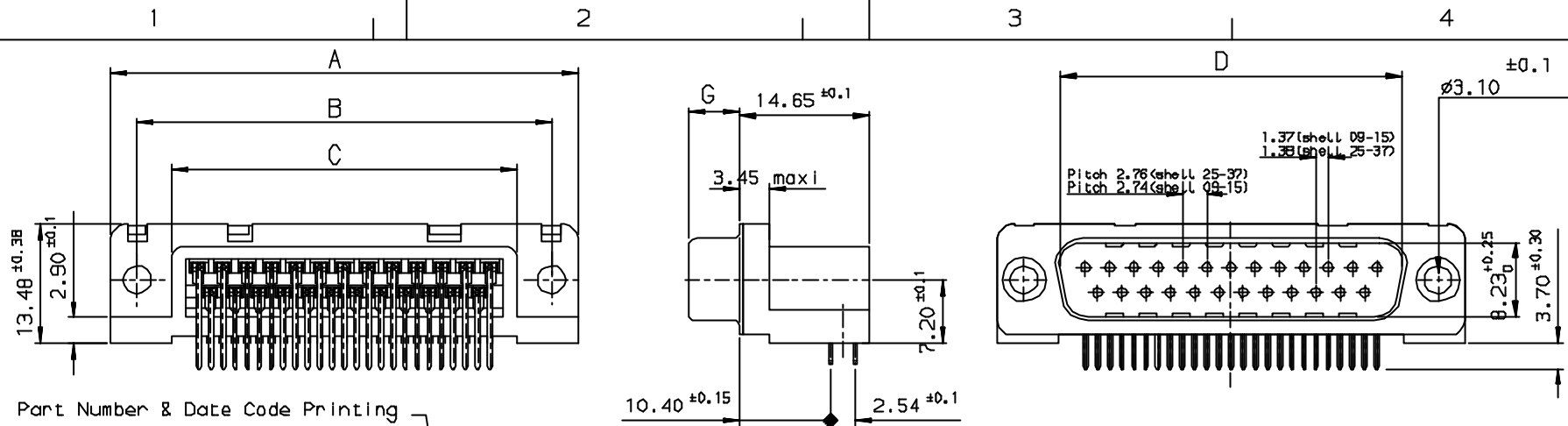
Address: A1208, Overseas Decoration Building, #122 Zhenhua RD., Futian, Shenzhen, China



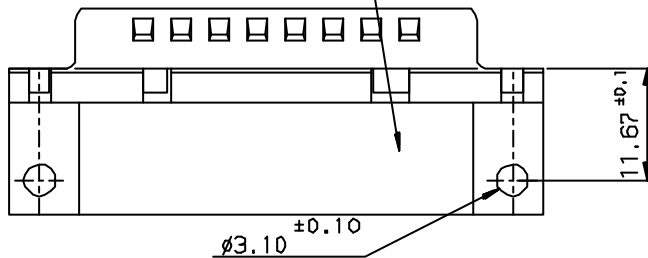
Tous droits strictement réservés. Reproduction ou communication à des tiers interdites sans la permission écrite de la Direction des Conception. Propriété de FCI. Droits de reproduction FCI.

FCI

All rights strictly reserved. Reproduction or communication to third parties in any form without the written authority from the proprietor. Property of FCI. Copyright FCI.

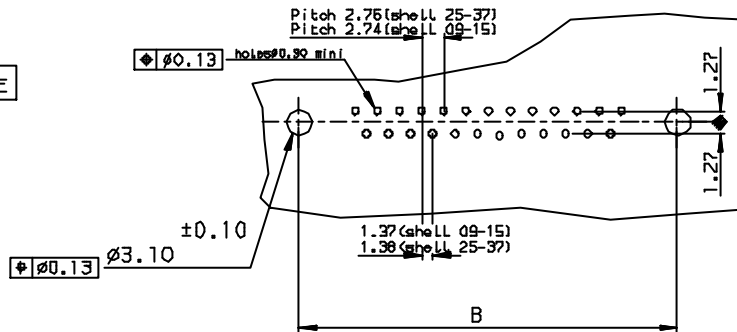


Part Number & Date Code Printing



10.40 ±0.15, 2.54 ±0.1

PC card drilling dimensions (after plating)
(thickness 1.60 ±0.20mm)



SHELL	A±0.38	B±0.12	C±0.10	D±0.25	G±0.25	PART NUMBER
09	30.81	24.99	16.96	16.79	5.90	D09P13B*PA00**
15	39.14	33.32	25.18	25.12	5.90	D15P13B*PA00**
25	53.03	47.04	39.12	38.84	5.70	D25P13B*PA00**
37	69.32	63.50	55.68	55.30	5.70	D37P13B*PA00**

LF FOR LEAD FREE

Plating: 4 --> Flash AU
Plating: 6 --> D.76µ AU

REQUIREMENTS

Technical characteristics

Shell: steel tin plated
Insulators: self-extinguishing black polyester, UL class 94V0
Contacts size 20: brass, gold on mating end, bright tin on termination end over nickel on entire contact
Cycle life: 500 mini for plating 6
200 mini for plating 4

Electrical characteristics

max. current rating: 5A
Test voltage: 1000V
Rated voltage: 300V
Contact resistance: <15mΩ
Shell resistance: <5mΩ
Insulation resistance: >5000MΩ

Climatic characteristics

Operating temperature range: -55° to +125°

Dimensions

in accordance with MIL-C-24308

FOR ROHS DETAILS REFER DWG. NO. C01-8646-0000

Utr	Eon no	Dr	date
e	105-0124	JS	27/7/05

		✓	Tolerance LINEAR ±0.1 ANGULAR ±1°	Projection 	MM →
Dr JOHN SLEEDA	19/4/03	Product Family	D-SUB	Size	A3
Eng GEORGE VJ	19/4/03	Spec ref		Scale	
Chr GEORGE VJ	27/7/05	Material		ECN	
Appr K Somasundaram	27/7/05				
FCI	Title	MALE CONNECT. DELTA D right angle spill without accessories.		Dwg no	C01-8646-0162
	Rev.				e
INDEX	DATE	REVISION DESCRIPTION	Catalog no	DELTA-D	CUSTOMER COPY
					Sheet 1 of 1