



Chipsmall Limited consists of a professional team with an average of over 10 year of expertise in the distribution of electronic components. Based in Hongkong, we have already established firm and mutual-benefit business relationships with customers from,Europe,America and south Asia,supplying obsolete and hard-to-find components to meet their specific needs.

With the principle of "Quality Parts,Customers Priority,Honest Operation,and Considerate Service",our business mainly focus on the distribution of electronic components. Line cards we deal with include Microchip,ALPS,ROHM,Xilinx,Pulse,ON,Everlight and Freescale. Main products comprise IC,Modules,Potentiometer,IC Socket,Relay,Connector.Our parts cover such applications as commercial,industrial, and automotives areas.

We are looking forward to setting up business relationship with you and hope to provide you with the best service and solution. Let us make a better world for our industry!



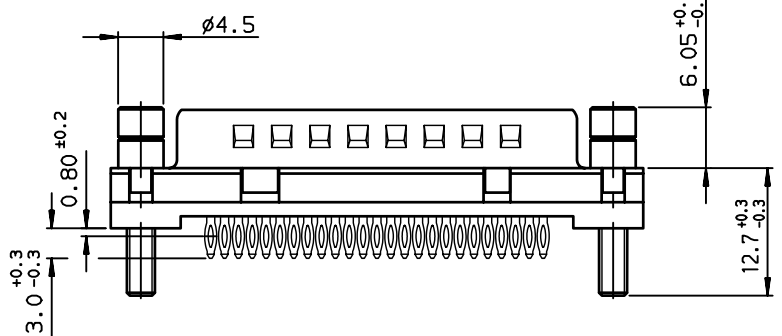
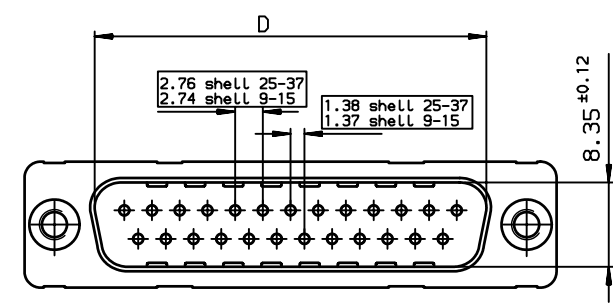
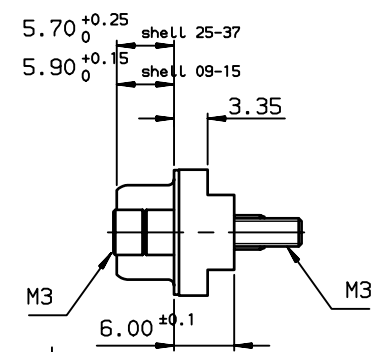
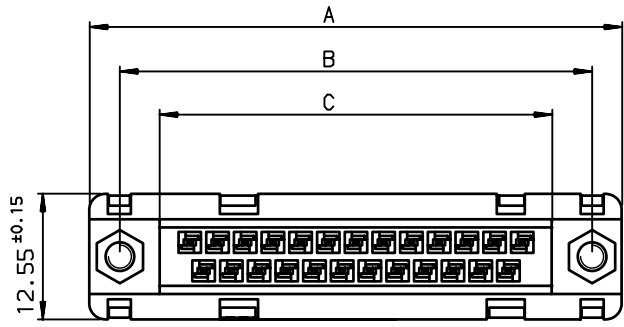
Contact us

Tel: +86-755-8981 8866 Fax: +86-755-8427 6832

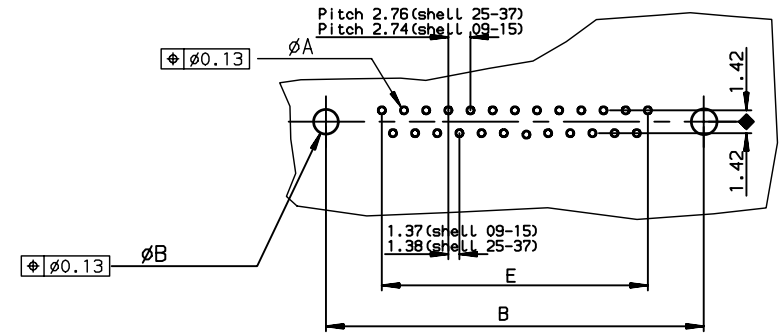
Email & Skype: info@chipsmall.com Web: www.chipsmall.com

Address: A1208, Overseas Decoration Building, #122 Zhenhua RD., Futian, Shenzhen, China





PC board drilling dimensions (after plating)
(thickness < 3.20 ± 0.30mm)



Copyright FCJ



TIN LEAD PART NUMBER

SHELL	A±0.38	B±0.12	C±0.10	D±0.25	E±0.07	PART NUMBER	PART NUMBER
09	30.81	24.99	16.96	16.79	10.96	--	D09P91C6P19C
15	39.14	33.32	25.18	25.12	19.18	--	D15P91C6P19C
25	53.03	47.04	39.12	38.84	33.12	--	D25P91C6P19C
37	69.32	63.50	55.68	55.30	49.68	--	D37P91C6P19C
						---	0.76µ gold

GENERAL CHARACTERISTICS AND ROHS INFORMATIONS:
SEE DRAWING C01-8646-0001

LEAD FREE PART NUMBER

SHELL	A±0.38	B±0.12	C±0.10	D±0.25	E±0.07	PART NUMBER	PART NUMBER
09	30.81	24.99	16.96	16.79	10.96	--	D09P91C6P19CLF
15	39.14	33.32	25.18	25.12	19.18	--	D15P91C6P19CLF
25	53.03	47.04	39.12	38.84	33.12	--	D25P91C6P19CLF
37	69.32	63.50	55.68	55.30	49.68	--	D37P91C6P19CLF
						---	0.76µ gold

rev	ecn no	dr	date
A	-	JOU	1998/04/24
B	LS05-004	MPE	2005/02/11
C	LS06-0095	LGO	2006/07/22
D	LS06-0140	LGO	2006/09/16
E	LS07-0298	MPE	2007/11/20
-	-	-	-
-	-	-	-

www.fciconnect.com		surface ISO 1302 ✓	tolerance std ISO 406 ISO 1101	projection 	mm
TOLERANCES UNLESS OTHERWISE SPECIFIED					
Dr	JOUBERT	1998/04/24	ANGULAR	0.X	±0.1
Eng	PESSON	1998/04/24	LINEAR	0.XX	±0.1
Chr	LEGARE	1998/04/24		0.XXX	±0.1
Appr	LEGARE	1998/04/24	0.XX' ±2'	size A3 Scale 2	
Product family				D-SUB	ECN LS07-0298
Product family				D-SUB	Spec ref -
MALE CONNECTOR DELTA D EUROPE straight press-fit					dwg no C01-8646-0616
catalog no				CUSTOMER	sheet 1 of 1

REV F - 2006-04-17