



Chipsmall Limited consists of a professional team with an average of over 10 year of expertise in the distribution of electronic components. Based in Hongkong, we have already established firm and mutual-benefit business relationships with customers from,Europe,America and south Asia,supplying obsolete and hard-to-find components to meet their specific needs.

With the principle of "Quality Parts,Customers Priority,Honest Operation,and Considerate Service",our business mainly focus on the distribution of electronic components. Line cards we deal with include Microchip,ALPS,ROHM,Xilinx,Pulse,ON,Everlight and Freescale. Main products comprise IC,Modules,Potentiometer,IC Socket,Relay,Connector.Our parts cover such applications as commercial,industrial, and automotives areas.

We are looking forward to setting up business relationship with you and hope to provide you with the best service and solution. Let us make a better world for our industry!



Contact us

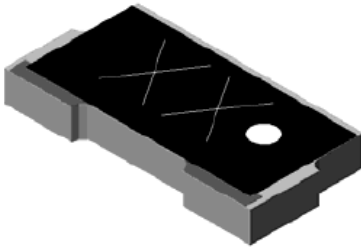
Tel: +86-755-8981 8866 Fax: +86-755-8427 6832

Email & Skype: info@chipsmall.com Web: www.chipsmall.com

Address: A1208, Overseas Decoration Building, #122 Zhenhua RD., Futian, Shenzhen, China



Surface Mount Attenuator 10 Watts



The D10AAXXZ4 is high performance Alumina (Al_2O_3) surface mount attenuator intended as a lower cost alternative to Aluminum Nitride (AlN) and Beryllium Oxide (BeO). The attenuator is well suited to all cellular frequency bands such as; AMPS, GSM, DCS, PCS, PHS and UMTS. The high power handling makes the part ideal for inter-stage matching, directional couplers, and for use in isolators.

Features:

- RoHS Compliant
- 10 Watts
- Low Cost
- DC – 3.0GHz
- Alumina Ceramic
- Non-Nichrome Resistive Element
- Low VSWR
- 100% Tested

General Specifications

Resistive Element	Thick film
Substrate	Alumina Ceramic
Terminal Finish	Matte Tin over Sulfamate Nickel
Operating Temperature	-55 to +125°C (see de rating chart)

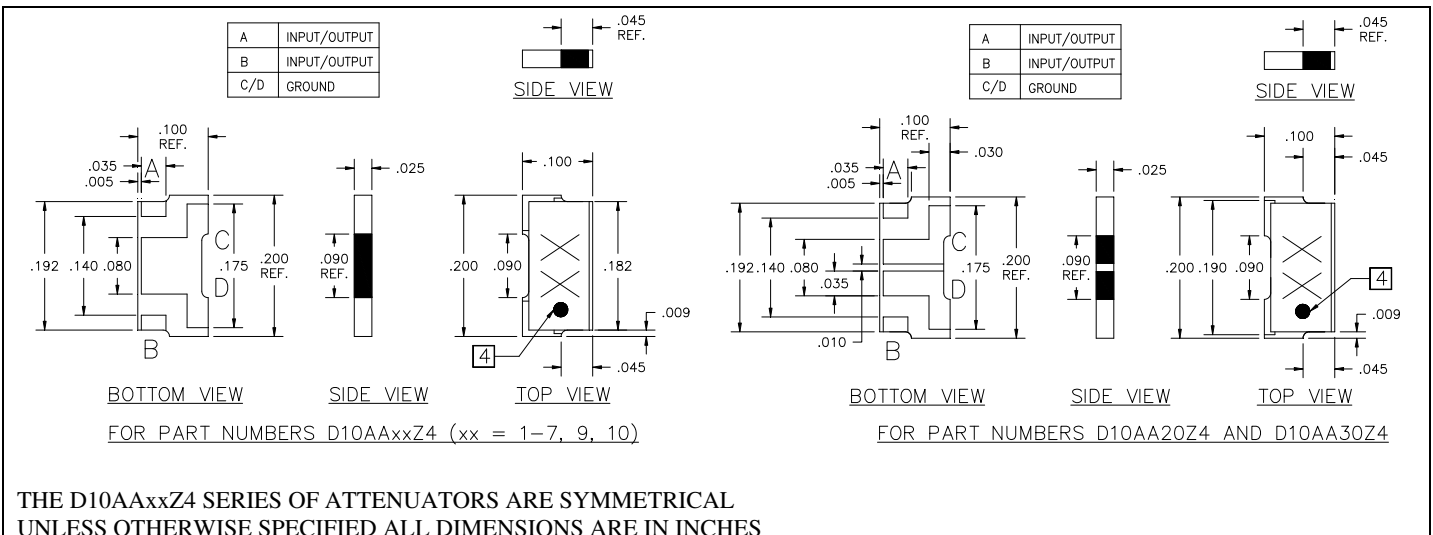
Tolerance is ± 0.010 ", unless otherwise specified. Designed to meet or exceed applicable portions of MIL-E-5400. **All dimensions in inches.**

Electrical Specifications

Attenuation Value:	1 – 7, 9, 10, 20 & 30dB
Power:	10 Watts
Frequency Range:	DC – 3.0GHz
VSWR	<1.25:1

Specification based on unit properly installed using suggested mounting instructions and a 50 ohm nominal impedance. **Specifications subject to change.**

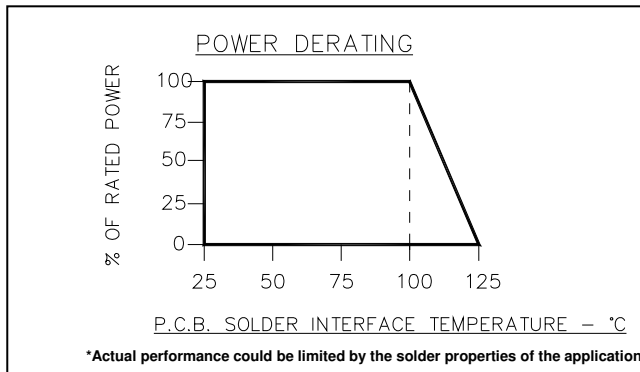
Outline Drawing



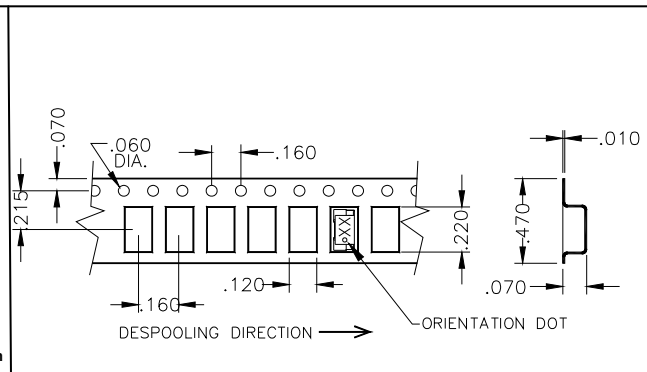
Specifications

PART NUMBER	ATTENUATION (dB)	TOL. (\pm dB)	POWER (WATTS)	VSWR	FREQ (GHZ)
D10AA1Z4	1	0.30	10	1.25:1	3.0
D10AA2Z4	2	0.30	10	1.25:1	3.0
D10AA3Z4	3	0.30	10	1.25:1	3.0
D10AA4Z4	4	0.30	10	1.25:1	3.0
D10AA5Z4	5	0.30	10	1.25:1	3.0
D10AA6Z4	6	0.30	10	1.25:1	3.0
D10AA7Z4	7	0.30	10	1.25:1	3.0
D10AA9Z4	9	0.25	10	1.25:1	3.0
D10AA10Z4	10	0.25	10	1.25:1	3.0
D10AA20Z4	20	0.50	10	1.25:1	3.0
D10AA30Z4	30	1.50	10	1.25:1	3.0

Power De-rating



Tape and Reel



Mounting Footprint and Procedure

Dimensions: .034 typ., .241, .131, .040, .066, .034, .101

Labels: 50 ohm line, Ground, 2x 2-56 Screw Hole

Labels: SOLDER PASTE, SOLDER FILLED VIA, PC BOARD, HEATSINK, MOUNTING PROCEDURE

1. DRILL THERMAL VIAS THROUGH PCB AND FILL WITH SOLDER, SUCH AS Sn98.
2. SOLDER PART IN PLACE USING Sn98 TYPE SOLDER WITH A CONTROLLED TEMPERATURE IRON (230°C)
3. TO ENSURE GOOD THERMAL CONNECTIVITY TO HEAT SINK, DRILL AND TAP HEATSINK AND MOUNT PCB BOARD TO HEATSINK USING SCREWS.

Dimension given in inches.
For best thermal performance the PCB should be placed with thermal joint compound to the heat sink.