



Chipsmall Limited consists of a professional team with an average of over 10 year of expertise in the distribution of electronic components. Based in Hongkong, we have already established firm and mutual-benefit business relationships with customers from,Europe,America and south Asia,supplying obsolete and hard-to-find components to meet their specific needs.

With the principle of “Quality Parts,Customers Priority,Honest Operation,and Considerate Service”,our business mainly focus on the distribution of electronic components. Line cards we deal with include Microchip,ALPS,ROHM,Xilinx,Pulse,ON,Everlight and Freescale. Main products comprise IC,Modules,Potentiometer,IC Socket,Relay,Connector.Our parts cover such applications as commercial,industrial, and automotives areas.

We are looking forward to setting up business relationship with you and hope to provide you with the best service and solution. Let us make a better world for our industry!



Contact us

Tel: +86-755-8981 8866 Fax: +86-755-8427 6832

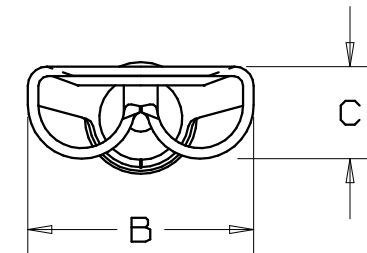
Email & Skype: info@chipsmall.com Web: www.chipsmall.com

Address: A1208, Overseas Decoration Building, #122 Zhenhua RD., Futian, Shenzhen, China



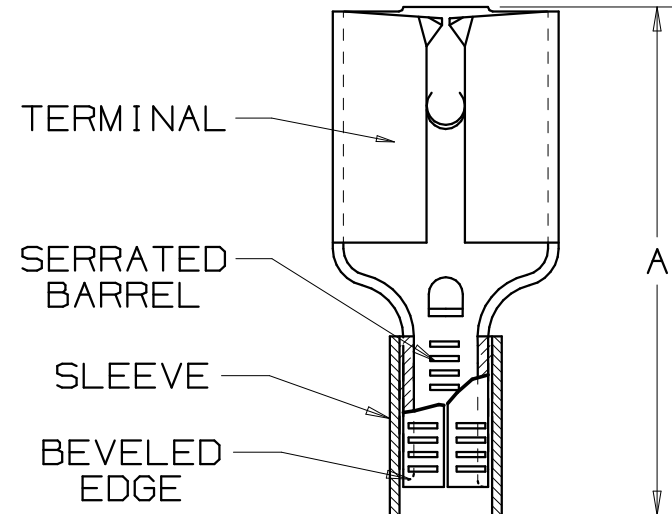
THIS COPY IS PROVIDED ON A RESTRICTED BASIS AND IS NOT TO BE USED IN ANY WAY DETRIMENTAL TO THE INTERESTS OF PANDUIT CORP.

PART NUMBER		TAB SIZE	WIRE RANGE AWG (mm ²)	DIMENSIONS in		
PREFIX	PKG			A ± 0.015 (0.4)	B ± 0.010 (0.3)	C ± 0.010 (0.3)
D18-188	-C -M	.187 x .020 (4.8 x 0.5)	22-18 (.5-1.0)	.58 (14.7)	.23 (5.8)	.10 (2.5)
* D14-188	-C -M	.187 x .020 (4.8 x 0.5)	16-14 (1.5-2.5)	.58 (14.7)	.23 (5.8)	.10 (2.5)
D18-187	-C -M	.187 x .032 (4.8 x 0.8)	22-18 (.5-1.0)	.58 (14.7)	.23 (5.8)	.10 (2.5)
* D14-187	-C -M	.187 x .032 (4.8 x 0.8)	16-14 (1.5-2.5)	.58 (14.7)	.23 (5.8)	.10 (2.5)



NOTES:

- UL LISTED, UL RECOGNIZED (D14-187 & D14-188 ONLY) AND CSA CERTIFIED FOR:
A. STRANDED COPPER WIRE ONLY
B. 302° F (150° C) MAX TEMP RATING
- PACKAGE QTY:
A. STD: -C=100
B. BULK: -M=1000
- MATERIAL:
A. STAMPING: .016 (0.41) THK BRASS, TIN PLATED
B. SLEEVE: BRASS, TIN PLATED
- WIRE STRIP LENGTH $9/32^{+1/32}$ (7.1 $^{+0.8}$), $^{-0}$
- FIRST INSERTION FORCE: 12 LB (53N) MAX
FIRST WITHDRAWAL FORCE: 12 LB (53N) MAX
6 LB (27N) MIN
- INSTALLATION TOOLS:
A. UL LISTED AND CSA CERTIFIED: CT-100, CT-200, CT-570, CT-1570, CT-2457CH
B. UL RECOGNIZED: CT-100, CT-200, CT-570, CT-1570, CT-2457CH
C. PANDUIT APPROVED: CT-160, CT-260
- DIMENSIONS IN BRACKETS ARE IN MILLIMETERS OR mm²



LISTED
20H3
E78522



CERTIFIED
LR31212



RECOGNIZED
E78522

A41305_08

PANDUIT

CORP.

TINLEY PARK, ILLINOIS

NON-INSULATED FEMALE DISCONNECT,
SLEEVED BARREL (.188 SERIES)

08	6/06	DAW	DAW	REMOVED MAX. AMPERAGE RATING	TRO0134				
07	7/03	KLFU	SKB	ADDED INTERNAL SERRATIONS WIRE RANGE 1,0 WAS 1,5	012453		SKB	TRO	
06	1/01	RM	SKB	FILESPEC WAS N41305AA_PCD_05	08933		JAC	CCH	
05	10/96	TM		ADD 187'S, UPDATED NOTES, FILESPEC WAS NPC_41305_04	05164				
04	3/95	MS	RS	UPDATED NOTES AND DIMENSIONS	03051		LA	KS	
REV	DATE	BY	CHK	DESCRIPTION	ECN #	QA	CUST	PM	APP

DRAWN BY

DAW

CHK'D

SCALE

NONE

DRAWING NO.

A41305