



Chipsmall Limited consists of a professional team with an average of over 10 year of expertise in the distribution of electronic components. Based in Hongkong, we have already established firm and mutual-benefit business relationships with customers from,Europe,America and south Asia,supplying obsolete and hard-to-find components to meet their specific needs.

With the principle of “Quality Parts,Customers Priority,Honest Operation,and Considerate Service”,our business mainly focus on the distribution of electronic components. Line cards we deal with include Microchip,ALPS,ROHM,Xilinx,Pulse,ON,Everlight and Freescale. Main products comprise IC,Modules,Potentiometer,IC Socket,Relay,Connector.Our parts cover such applications as commercial,industrial, and automotives areas.

We are looking forward to setting up business relationship with you and hope to provide you with the best service and solution. Let us make a better world for our industry!



Contact us

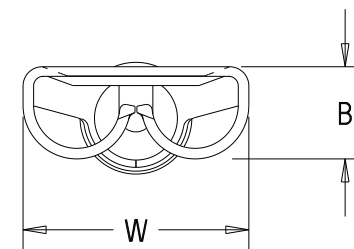
Tel: +86-755-8981 8866 Fax: +86-755-8427 6832

Email & Skype: info@chipsmall.com Web: www.chipsmall.com

Address: A1208, Overseas Decoration Building, #122 Zhenhua RD., Futian, Shenzhen, China



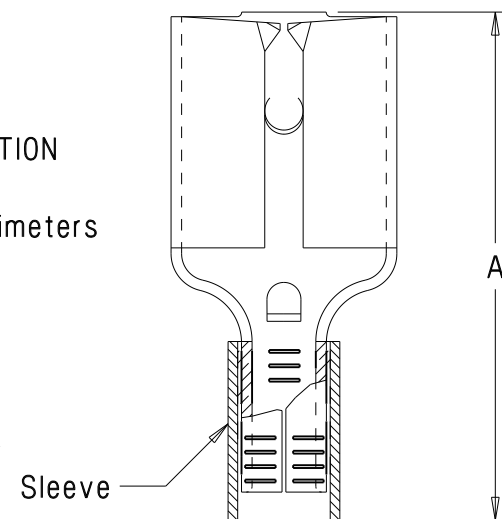
Part number	Tab size	Wire range AWG	Dimensions in.		
			A $\begin{smallmatrix} +/- .03 \\ (.8) \end{smallmatrix}$	B $\begin{smallmatrix} +/- .01 \\ (.3) \end{smallmatrix}$	W $\begin{smallmatrix} +/- .01 \\ (.3) \end{smallmatrix}$
D18-250	.250 X .032 (6.3 X 0.8)	22-18	.66 (16.8)	.12 (3.0)	.30 (7.6)
*D14-250	.250 X .032 (6.3 X 0.8)	16-14	.66 (16.8)	.12 (3.0)	.30 (7.6)
D10-250	.250 X .032 (6.3 X 0.8)	12-10	.72 (18.3)	.12 (3.0)	.30 (7.6)



* UL RECOGNIZED ONLY

Notes:

- Used for:
 - 302° (150° C) maximum temperature rating
 - Stranded copper wire only
- First insertion force : 12 Lb (53N) maximum
First withdrawal force: 12 Lb (53N) maximum
6 Lb (27N) minimum
- Installation tools:
 - UL listed & CSA certified: CT-100,CT-100A,CT-200,CT-570,CT-600-A(D10-250 ONLY)
CT-1570,CT-2457CH, CT-2500
 - UL recognized : CT-100,CT-100A,CT-200,CT-570,CT-600-A, CT-1570,CT-2457CH,CT-2500
 - Panduit approved : CT-160, CT-260
- Wire strip length: $9/32 \begin{smallmatrix} +1/32 \\ -0 \end{smallmatrix}$ (7.1 $\begin{smallmatrix} +.8 \\ -0 \end{smallmatrix}$)
- Material:
 - Stamping: .016" (0.41) thick tin plated brass
D18-250 & D14-250
.018" (0.46) thick tin plated brass
D10-250 only
 - Sleeve : Tin plated brass
- SEE www.panduit.com
FOR PART NUMBER SUFFIX DESIGNATION
FOR PACKAGE SIZE
- Dimensions in brackets are in millimeters



LISTED
20H3
E78522



CERTIFIED
LR31212



RECOGNIZED
E78522

PANDUIT

CORP.

TINLEY PARK, ILLINOIS

Non-insulated, sleeved barrel female disconnect (.250 series)

13	8/11	SHOR	ADDED INSTALLATION TOOLS, UPDATED UL RECOGNIZED SYMBOL
12	7-11	SB	Added suffix part number designation for package size
REV	DATE	BY	DESCRIPTION

DRAWN BY DAW	CHK'D RS	SCALE None	DRAWING NO. A41304
-----------------	-------------	---------------	-----------------------