



Chipsmall Limited consists of a professional team with an average of over 10 year of expertise in the distribution of electronic components. Based in Hongkong, we have already established firm and mutual-benefit business relationships with customers from,Europe,America and south Asia,supplying obsolete and hard-to-find components to meet their specific needs.

With the principle of "Quality Parts,Customers Priority,Honest Operation,and Considerate Service",our business mainly focus on the distribution of electronic components. Line cards we deal with include Microchip,ALPS,ROHM,Xilinx,Pulse,ON,Everlight and Freescale. Main products comprise IC,Modules,Potentiometer,IC Socket,Relay,Connector.Our parts cover such applications as commercial,industrial, and automotives areas.

We are looking forward to setting up business relationship with you and hope to provide you with the best service and solution. Let us make a better world for our industry!



Contact us

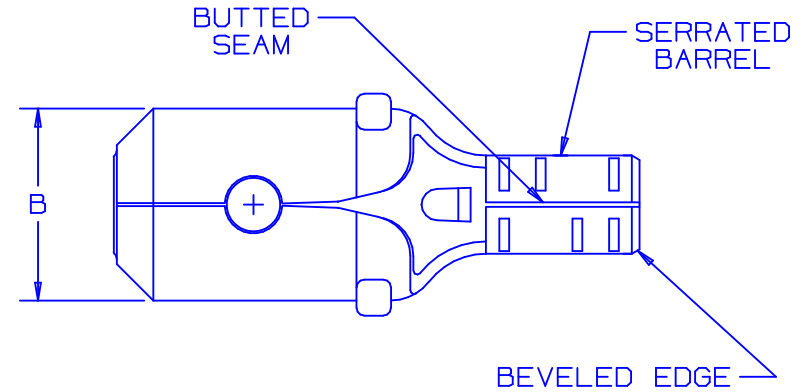
Tel: +86-755-8981 8866 Fax: +86-755-8427 6832

Email & Skype: info@chipsmall.com Web: www.chipsmall.com

Address: A1208, Overseas Decoration Building, #122 Zhenhua RD., Futian, Shenzhen, China

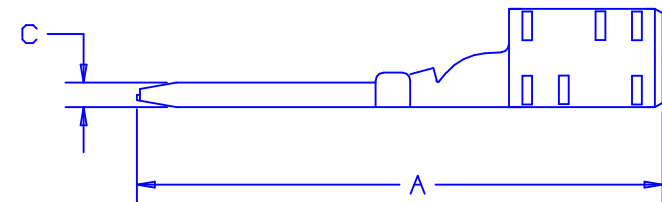


PART NUMBER	WIRE RANGE AWG	DIMENSIONS in.		
		A $\pm .02$	B $\pm .01$	C $\pm .01$
D18-250MB	22-18	.69 (17.4)	.25 (6.3)	.03 (0.76)
D14-250MB	16-14	.69 (17.4)	.25 (6.3)	.03 (0.76)



NOTES:

- USED FOR:
A. 302° F (150 C) MAX. TEMP RATING
B. STRANDED COPPER WIRE ONLY
- MATERIAL:
STAMPING - .016" (.406) THK BRASS,
NICKEL PLATED.
- PACKAGE QTY: STD. PKG. - C = 100
BULK PKG. - M = 1000
- DIMENSIONS IN BRACKETS ARE IN MILLIMETERS
- INSTALLATION TOOLS: CT-100, CT-200.
- WIRE STRIP LENGTH: $9/32 \begin{matrix} +1/32 \\ -0 \end{matrix}$ (7.1 $\begin{matrix} +0.8 \\ -0 \end{matrix}$)



07	2/04	JHNU		REVISED NOTE 5: ADDED CT-200.	11533		
06	8/97	TM	RJS	ADDED NOTE #6, WAS TIN PLATED	06105	LA	DH
05	2/96	ED		REVISED NOTES, TABLE, & BARREL DESIGN FILESPEC WAS: A41320A.04	03967	LA	DH
04	12/89	DL	LM	REVISED DWG. TO CURRENT DESIGN WITH LESS MAT'L IN TRANSITION AREA		LM	DH
03	8/89	JP	LM	STAMPING WAS .032 COPPER		LM	DH
REV	DATE	BY	CHK	DESCRIPTION	ECN#	CUST	PM

A41320_07



TINLEY PARK, ILLINOIS

NON-INSULATED MALE DISCONNECT
.250 X .032 (6.35 X 0.81)

DRAWN BY	CHK'D	SCALE	DRAWING NO.
DAW	LM	NONE	A41320