



Chipsmall Limited consists of a professional team with an average of over 10 year of expertise in the distribution of electronic components. Based in Hongkong, we have already established firm and mutual-benefit business relationships with customers from,Europe,America and south Asia,supplying obsolete and hard-to-find components to meet their specific needs.

With the principle of “Quality Parts,Customers Priority,Honest Operation,and Considerate Service”,our business mainly focus on the distribution of electronic components. Line cards we deal with include Microchip,ALPS,ROHM,Xilinx,Pulse,ON,Everlight and Freescale. Main products comprise IC,Modules,Potentiometer,IC Socket,Relay,Connector.Our parts cover such applications as commercial,industrial, and automotives areas.

We are looking forward to setting up business relationship with you and hope to provide you with the best service and solution. Let us make a better world for our industry!



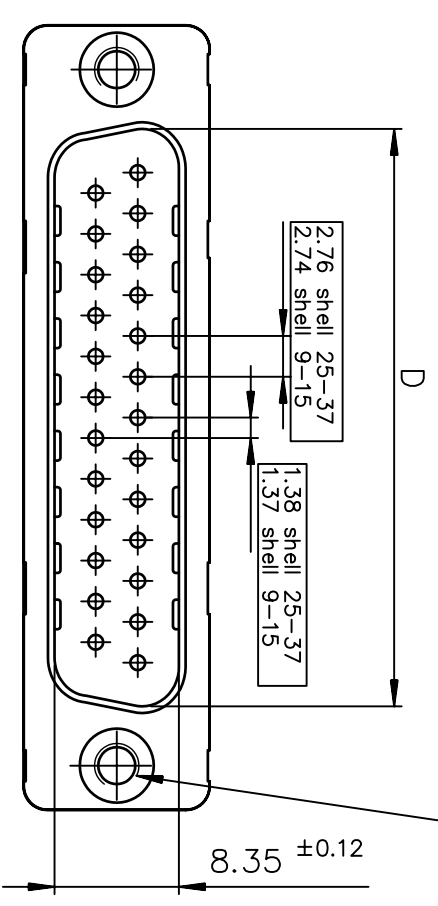
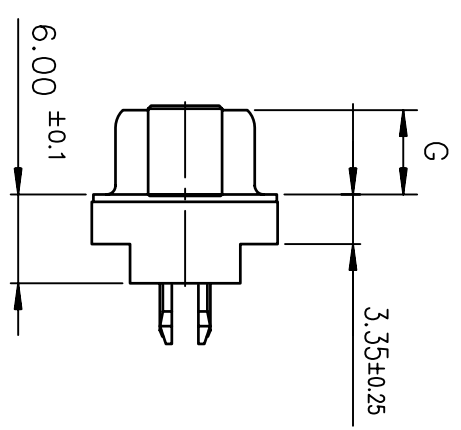
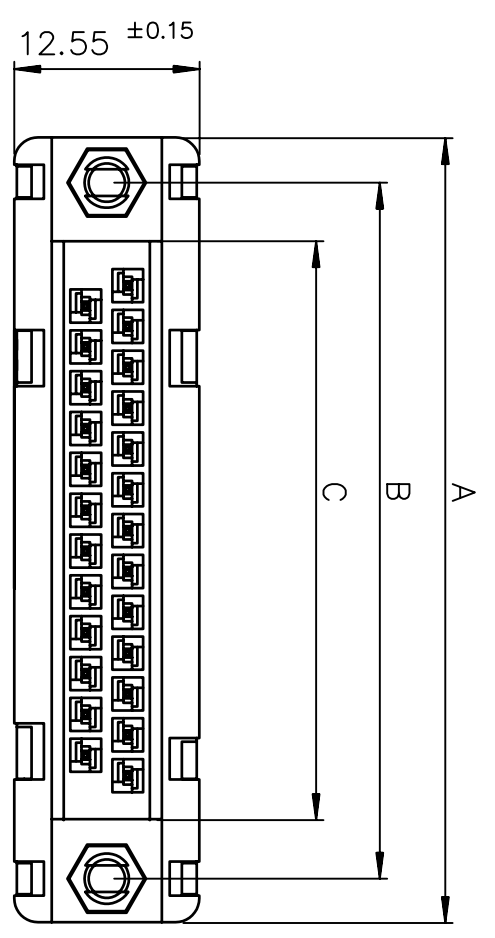
Contact us

Tel: +86-755-8981 8866 Fax: +86-755-8427 6832

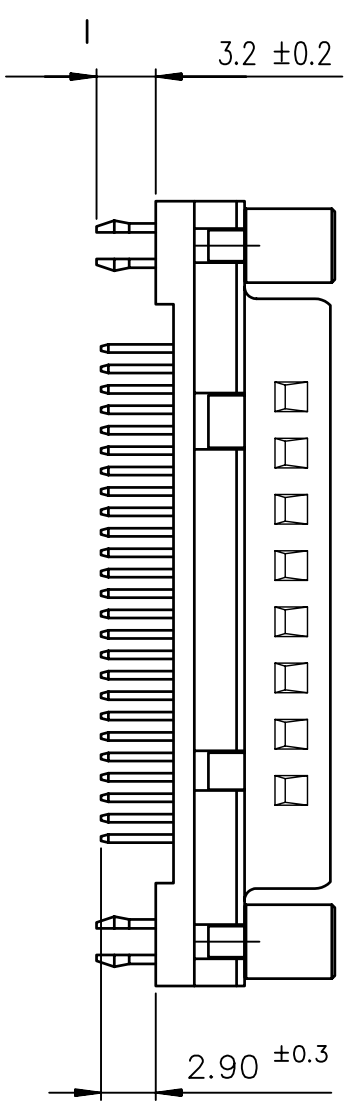
Email & Skype: info@chipsmall.com Web: www.chipsmall.com

Address: A1208, Overseas Decoration Building, #122 Zhenhua RD., Futian, Shenzhen, China

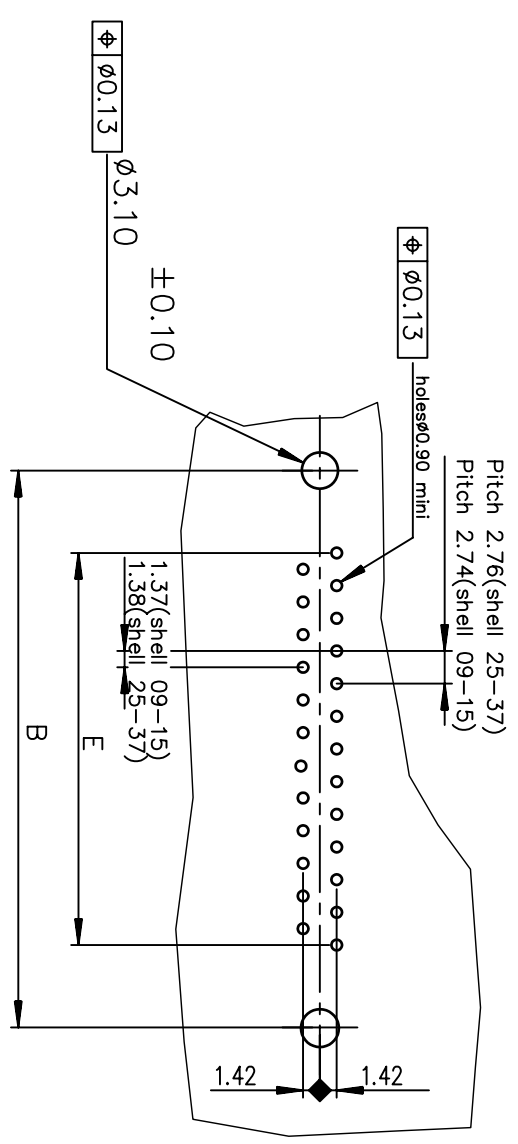




SHELL	A±0.38	B±0.12	C±0.10	D±0.25	E±0.07	G±0.25
09	30.81	24.99	16.96	16.79	10.96	5.90
15	39.14	33.32	25.18	25.12	19.18	5.90
25	53.03	47.04	39.12	38.84	33.12	5.70
37	69.32	63.50	55.68	55.30	49.68	5.70



PC card drilling dimensions(after plating)
(thickness 1.60±0.20mm)



SHELL	LEAD FREE PART NUMBER	TIN LEAD PART NUMBER	DESIGNATIONS
09	D09P24A6GV00LF	D09P24A6GV00	HEADER 9 CTS STRAIGHT-SOLDER TO BOARD-PCB HARPOON-SCREWLOCK -ELEC.CONTIN.
15	D15P24A6GV00LF	D15P24A6GV00	HEADER 15 CTS STRAIGHT-SOLDER TO BOARD-PCB HARPOON-SCREWLOCK -ELEC.CONTIN.
25	D25P24A6GV00LF	D25P24A6GV00	HEADER 25 CTS STRAIGHT-SOLDER TO BOARD-PCB HARPOON-SCREWLOCK -ELEC.CONTIN.
37	D37P24A6GV00LF	D37P24A6GV00	HEADER 37 CTS STRAIGHT-SOLDER TO BOARD-PCB HARPOON-SCREWLOCK -ELEC.CONTIN.

SHELL	LEAD FREE PART NUMBER	TIN LEAD PART NUMBER	DESIGNATIONS
09	D09P24A*GI00LF	D09P24A*GI00	HEADER 9 CTS STRAIGHT-SOLDER TO BOARD-PCB HARPOON-SCREWLOCK -ELEC.CONTIN.
15	D15P24A*GI00LF	D15P24A*GI00	HEADER 15 CTS STRAIGHT-SOLDER TO BOARD-PCB HARPOON-SCREWLOCK -ELEC.CONTIN.
25	D25P24A*GI00LF	D25P24A*GI00	HEADER 25 CTS STRAIGHT-SOLDER TO BOARD-PCB HARPOON-SCREWLOCK -ELEC.CONTIN.
37	D37P24A*GI00LF	D37P24A*GI00	HEADER 37 CTS STRAIGHT-SOLDER TO BOARD-PCB HARPOON-SCREWLOCK -ELEC.CONTIN.

4 = Performance level PL3 ≥ 200 OPERATIONS
6 = Performance level PL1 ≥ 500 OPERATIONS

GENERAL CHARACTERISTICS AND ROHS INFORMATIONS:
SEE DRAWING C01-8646-0000

www.fciconnect.com

Dr	Eng	Chr	Appr	Product family	tolerance std	projection	Scale
JARRY	PESSON	NIRMAL GEORGE	SUDHIR VARMA	2010-02-23	ISO 1302	ANGULAR	A3
1995/08/11	1995/08/11	2010-02-23	2010-02-23	Product family	ISO 406 ISO 1101	LINEAR	2
				D-SUB	TOLERANCES UNLESS OTHERWISE SPECIFIED		mm
				Header Delta D STD EUROPE	0.X		European Views
				Header Delta D STD EUROPE	0.XX		
				Header Delta D STD EUROPE	0.XXX		
				Product family	±0.1		
				Product family	±0.1		
				Product family	±0.1		

rev	ecn no	dr	date
-	-	-	-
A	-	BAR	2003/04/16
B	LS05-001	MPE	2005/03/14
C	LS05-0056	LGO	2005/07/07
D	LS06-0097	LGO	2006/07/28
E	I09-0268	NG	2009-11-24
F	I10-0059	NG	2010-02-23

FCI logo and header information including 'HEADER DELTA D STD EUROPE', 'HEADER DELTA D STD EUROPE', and 'CUSTOMER' details.