



Chipsmall Limited consists of a professional team with an average of over 10 year of expertise in the distribution of electronic components. Based in Hongkong, we have already established firm and mutual-benefit business relationships with customers from,Europe,America and south Asia,supplying obsolete and hard-to-find components to meet their specific needs.

With the principle of “Quality Parts,Customers Priority,Honest Operation,and Considerate Service”,our business mainly focus on the distribution of electronic components. Line cards we deal with include Microchip,ALPS,ROHM,Xilinx,Pulse,ON,Everlight and Freescale. Main products comprise IC,Modules,Potentiometer,IC Socket,Relay,Connector.Our parts cover such applications as commercial,industrial, and automotives areas.

We are looking forward to setting up business relationship with you and hope to provide you with the best service and solution. Let us make a better world for our industry!



Contact us

Tel: +86-755-8981 8866 Fax: +86-755-8427 6832

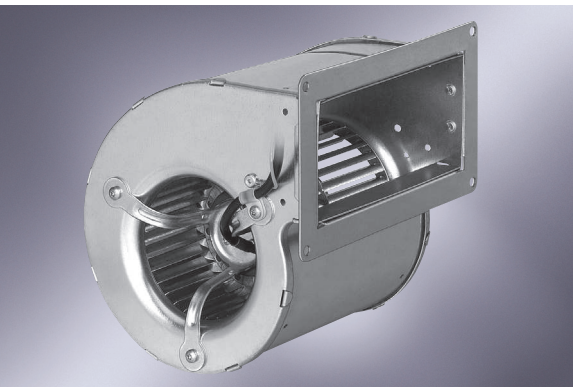
Email & Skype: info@chipsmall.com Web: www.chipsmall.com

Address: A1208, Overseas Decoration Building, #122 Zhenhua RD., Futian, Shenzhen, China



AC centrifugal blowers

dual inlet, Ø 097



- Material: scroll housing and impeller made of galvanized sheet steel
- Mounting: SAL (standard external-rotor) motor mounted via brackets on one side of the scroll housing

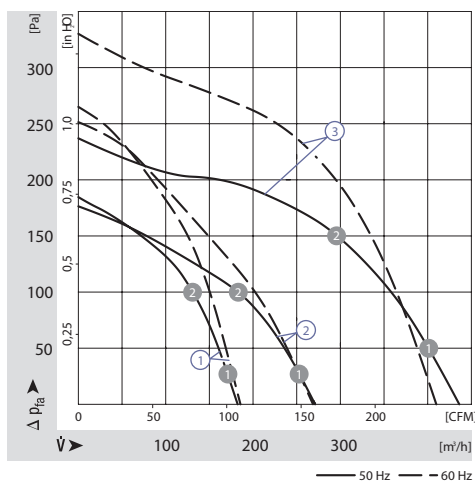
ebm-papst · Mulfingen

Nominal data		Characteristic	Voltage	Frequency	Air flow	Speed/rpm	Power input	Current draw	Capacitor	Noise level	Min. back pressure	Perm. amb. temp.	Mass
Type	Motor		VAC	Hz	m ³ /h	min ⁻¹	W	A	µF/VDB	dB(A)	Pa	°C	kg
D2E 097-CB01 -12 ⁽¹⁾⁽³⁾	M2E042-CA		230	50	180	1650	42	0,19	1,5/400	47	0	60	1,3
D2E 097-CB01 -48 ⁽¹⁾⁽³⁾⁽⁴⁾	M2E042-CA	①	230	50	180	1650	42	0,19	1,5/400	47	0	60	1,3
D2E 097-CB01 -02 ⁽²⁾⁽³⁾	M2E042-CA		230	60	180	1650	42	0,20	1,5/400	47	0	60	1,3
D2E 097-BE01 -65 ⁽¹⁾⁽³⁾	M2E042-CA	②	230	50	270	1250	48	0,22	2,0/400	47	0	55	1,5
D2E 097-BE01 -02 ⁽²⁾⁽³⁾	M2E042-CA		230	60	265	1200	54	0,26	2,0/400	47	0	50	1,5
D2E 097-BI56 -48 ⁽¹⁾	M2E042-CA	③	230	50	435	1950	87	0,39	2,0/400	58	0	40	1,5
D2E 097-BI56 -02 ⁽²⁾	M2E042-CA		230	60	410	1850	100	0,45	2,0/400	57	0	35	1,5

subject to alterations ⁽¹⁾ With flange ⁽²⁾ Without flange ⁽³⁾ FPU (P2) capacitor in keeping with IEC 252 ⁽⁴⁾ With grill guard

	n [min ⁻¹]	P ₁ [W]
① ①	1690	39
① ②	2090	36
② ①	1395	49
② ②	1900	45
③ ①	2150	83
③ ②	2475	73

Characteristics



Dimensions

Type	A	B	C	D	E	H	I	K	L	M	N	O	P
D2E 097-CB01 -12 D2E 097-CB01 -02	140	128	78	66	46	80,0	108	144	76	137	62	96	51,0
D2E 097-BE01 -65 D2E 097-BE01 -02	180	168	100	88	67	79,5	146	162	86	165	68	114	62,5
D2E 097-BI56 -48 D2E 097-BI56 -02	180	168	100	88	67	79,5	146	162	86	165	68	114	62,5

