



Chipsmall Limited consists of a professional team with an average of over 10 year of expertise in the distribution of electronic components. Based in Hongkong, we have already established firm and mutual-benefit business relationships with customers from,Europe,America and south Asia,supplying obsolete and hard-to-find components to meet their specific needs.

With the principle of "Quality Parts,Customers Priority,Honest Operation,and Considerate Service",our business mainly focus on the distribution of electronic components. Line cards we deal with include Microchip,ALPS,ROHM,Xilinx,Pulse,ON,Everlight and Freescale. Main products comprise IC,Modules,Potentiometer,IC Socket,Relay,Connector.Our parts cover such applications as commercial,industrial, and automotives areas.

We are looking forward to setting up business relationship with you and hope to provide you with the best service and solution. Let us make a better world for our industry!



Contact us

Tel: +86-755-8981 8866 Fax: +86-755-8427 6832

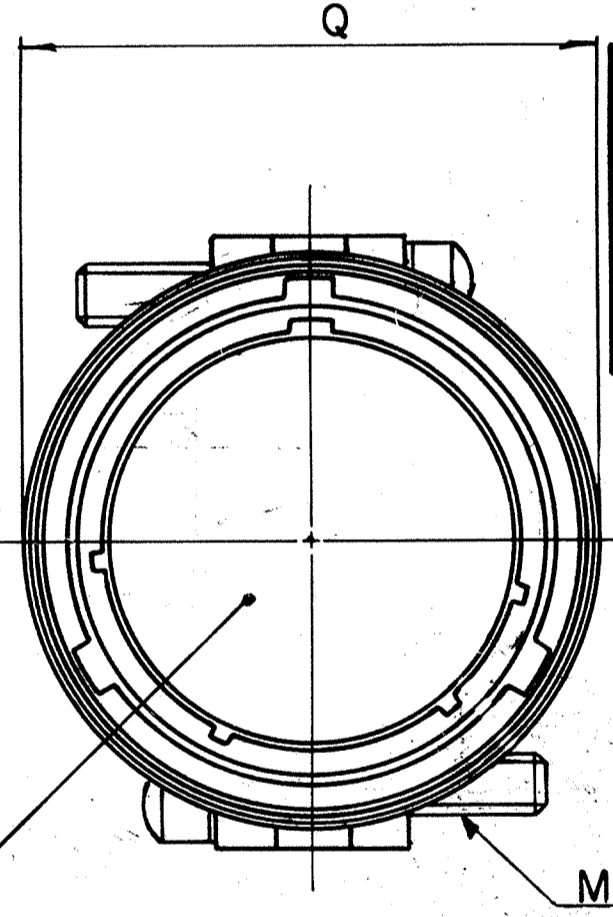
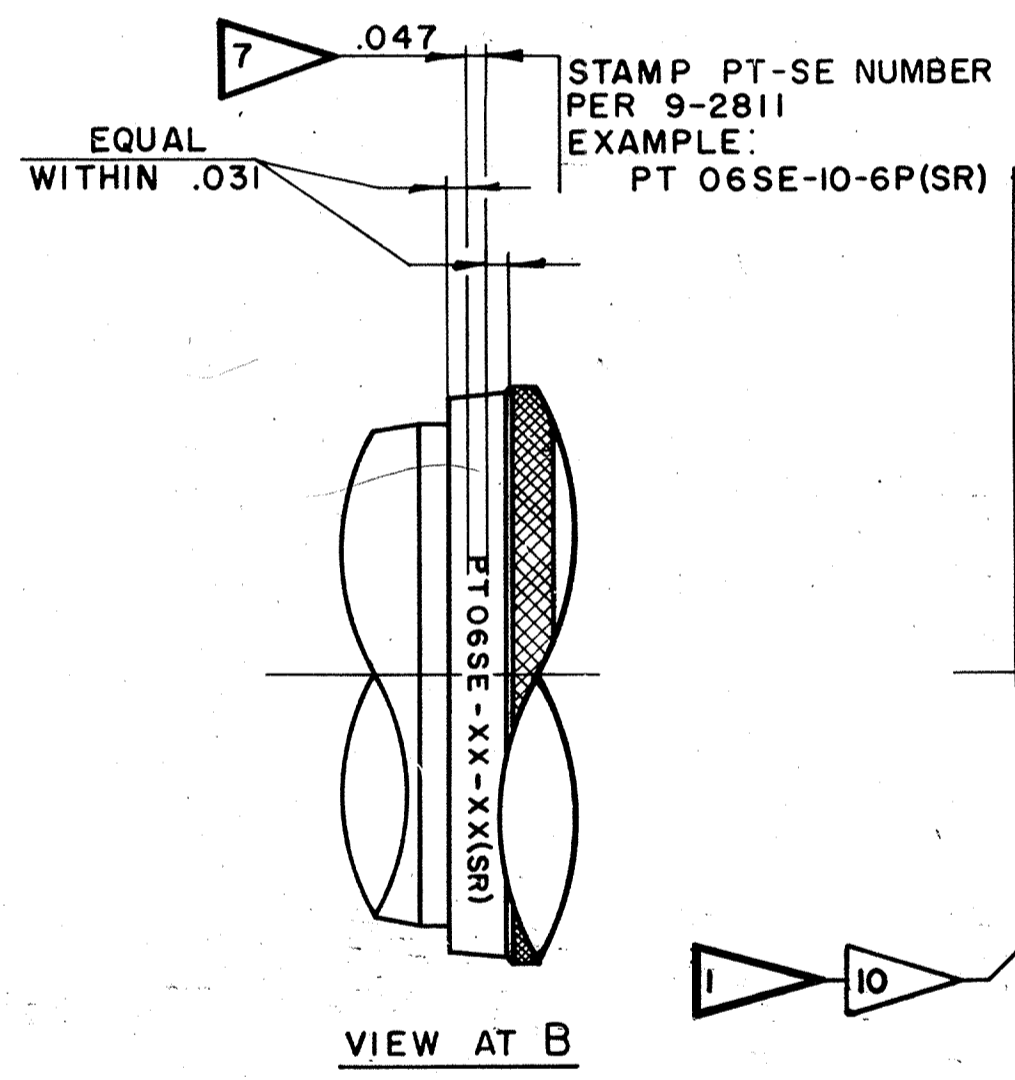
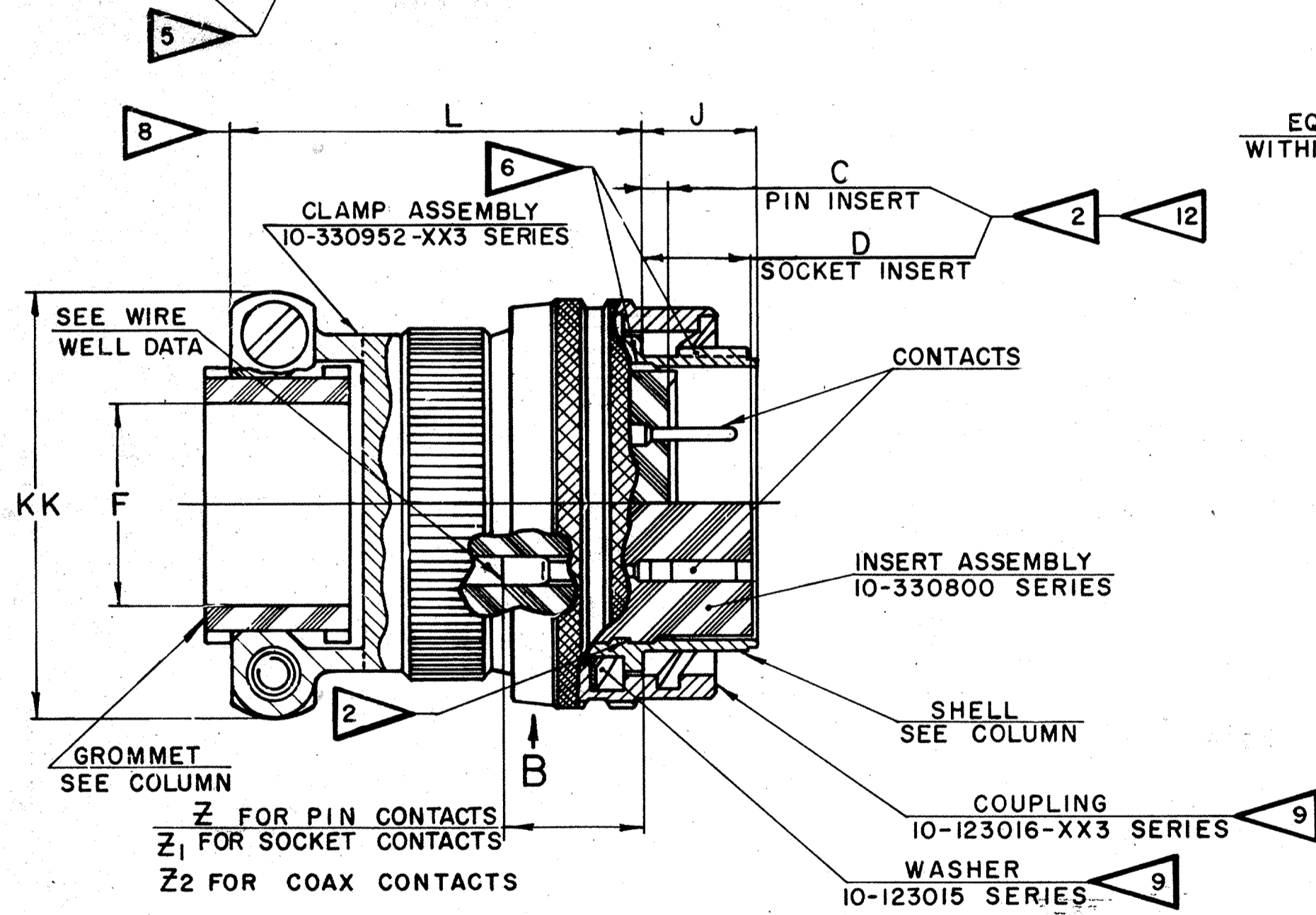
Email & Skype: info@chipsmall.com Web: www.chipsmall.com

Address: A1208, Overseas Decoration Building, #122 Zhenhua RD., Futian, Shenzhen, China



ASSEMBLY NUMBER	PT-SE NUMBER	DETAILS		DIMENSIONS											
		SHELL	GROMMET	C	D	F	J	L	M	Q	Z	Z ₁	KK	Z ₂	
				+020 -000	+020 -000	DIA		MAX	THREAD REF CLASS 2	DIA +000 -047	±045	±045	+000 -047	MAX	
71-332606-	06SE-6-	(SR)	NOT AVAILABLE												
71-332608-	-8-	10-330906-83	10-36565-101	.030	.337	.125	.353	1.547	6-32UNC	.734	.640	.579	.781	.875	
71-332610-	-10-	-103	-122			.188				.844			.844		
71-332612-	-12-	-123	-143			.312				1.016			.969		
71-332614-	-14-	-143	-163			.375				1.141			1.094		
71-332616-	-16-	-163	-183			.500		1.625		1.266			1.156		
71-332618-	-18-	-183	-203			.625		1.625	8-32UNC	1.375			1.406		
71-332620-	-20-	-203	-203	.092	.399	.625	.415	1.672		1.516	.578	.517	1.406	.812	
71-332622-	-22-	-223	-244			.750		1.672		1.641			1.594		
71-332624-	-24-	-243	-232			.800		1.734		1.761			1.688		
71-332625/50				NOT AVAILABLE											

REL. NO. 36508-358		REVISIONS			COMM. REC.
CHG. NO.	SYM.	DESCRIPTION	DATE	APPROVAL	
37753-3	1	REDRAWN BY E. MICHEL; WAS SAME SIZE 9-3836-1 (ASSY SPEC); ADD -24 & REL.-24 & DATA, NOTE 14, REV. & RELOC. GROM. COL.	7-14-60	<i>Schlad</i>	
38311-12	2	REV NOTE 11	8-18-61	<i>Schlad</i>	
38525-118	3	REVERSED LOCATION OF CLAMP BAR SCREWS	11-2-61	<i>Schlad</i>	
39070-2	4	RELOC AND REV C & D DIM	1-4-62	<i>Schlad</i>	
39606-7	A1	WAS 10-330910-XX3 SERIES (CLAMP ASSY); L ± 0.031; REV L COL	4-16-62	<i>Schlad</i>	
39525-309	A2	ADDED Z2 DIM & Z2 MAX COL	1-22-63	<i>Schlad</i>	
56525-56	A3	REV C COL	12-2-74	<i>Schlad</i>	
56500-63	A4	ADD & REL -8 & DATA	2-21-75	<i>Schlad</i>	
	B	(CL 11) REM NOTE 11; FLAG ECN: 74403-1	7-19-83	<i>Schlad</i>	



ACCESSORIES (NOT PART OF STANDARD ASSEMBLY)

SEE DRAWING 10-150000

7. SEE WORK ORDER FOR PERMISSIBLE ADDITIONAL OR ALTERNATE STAMPING.
6. VERTICAL CENTERLINES OF INSERT ARRANGEMENT AND SHELL POLARIZING KEY MUST BE WITHIN .005 OF INDICATED ROTATION PER 9-2437-1.
5. TO COMPLETE ASSY NO. & PT-SE NO., ADD APPLICABLE INSERT ARRANGEMENT SUFFIX TO BASE NUMBERS LISTED ABOVE PER 9-2437-1.
4. FOR COMPONENT PART NUMBERS OF DESIRED ARRANGEMENT, SEE APPLICABLE PARTS LIST (PL).
3. MATES WITH RECEPTACLE 71-332006/50 & OTHERS
2. DIMENSIONS MUST BE MAINTAINED WHEN INSERTS ARE PRESSED FIRMLY AGAINST INDICATED SHOULDER
1. FOR CONTACT ARRANGEMENTS, SEE DRAWINGS L-15206-() THRU L-15250-().
14. UNITS ILLUSTRATED MEET THE MATERIAL AND FINISH REQUIREMENTS OF MIL-C-26482.
13. FOR FINAL INSTALLATION, CONTACTS MUST BE ASSEMBLED INTO ALL INSERT HOLES. ALL UNUSED GROMMET HOLES MUST BE FILLED WITH APPROPRIATE SEALING PLUG 10-101033.
12. INSERT LOCATING DIMENSIONS APPLY BEFORE ASSEMBLY OF CONTACTS.
10. INSERT ASSEMBLY IS NOT REMOVABLE.
9. COUPLING SLOTS & WASHER TO BE LUBRICATED PER 9-3502.
8. DIMENSION INDICATES FINAL INSTALLATION, FOR STORAGE & SHIPPING, SHELL & CLAMP ASSEMBLY MUST BE LOOSELY COUPLED.

COAXIAL WELL DATA	
CONTACT SIZE	8
CABLE TYPE	RG-195/U RG-180/U

WIRE WELL DATA			
CONTACT SIZE	20	16	
CONDUCTOR WELL DIA	.048 +002 -000	.066 +002 -000	
CONDUCTOR WELL DEPTH	.184 +037 -000	.234 +031 -000	
INSULATION WELL DIA	.091 +002 -000	NOT AVAILABLE	
INSULATION WELL DEPTH	.077 +006 -000	NOT AVAILABLE	

TEST 9-4039-1
ASSY 9-3836-2, 9-2437-1
9-3502, 9-2811

UNLESS OTHERWISE SPECIFIED

1. TOLERANCES: LINEAR .000 ± .010, .00 ± .02, .0 ± .1
ANGULAR ± 2°

2. ALL LOCATION TOLERANCES APPLY AT MAXIMUM MATERIAL CONDITION (MMC).

3. RADIUS FILLETS & BREAK EDGES .005-.020.

4. CONCENTRICITY: .015 TIR REGARDLESS OF SIZE.

FOR DRAWING INTERPRETATION SEE SPEC 9-3500

MATERIAL SPEC HEAT TREAT SPEC FINISH SPEC

ITEM	REQD	PART NO.	DESCRIPTION	UNIT WT	NEXT ASSY	USED ON
LIST OF MATERIAL						
APPLICATION						

ABBREVIATIONS & SYMBOLS (MMC)-MAXIMUM MATERIAL CONDITION (TP)-TRUE POSITION - REF NOTE

ORIG ENG JOB NO. 99G

DRAWN: EICHORN DATE: 6-9-60

CHECKED: MAT'L DATE: 12-19-60

STD'S: 12-19-60

CH DR: 12-19-60

APP'D: E. Barnhart 12/19/60

TITLE: CONNECTOR, ELECTRICAL PLUG, TYPE PT-SE () MC, OLIVE DRAB

SCALE: NONE WT. CALC (SEE ACT. SPT) LBS REF. 71-197606/50 DRAWING SIZE: C TAB.

Bendix

SCINTILLA DIVISION
BENDIX AVIATION CORPORATION
SIDNEY, N.Y., U.S.A.

71-332606 THRU 71-332650

CODE 77820

71-332606 THRU 71-332650