



Chipsmall Limited consists of a professional team with an average of over 10 year of expertise in the distribution of electronic components. Based in Hongkong, we have already established firm and mutual-benefit business relationships with customers from,Europe,America and south Asia,supplying obsolete and hard-to-find components to meet their specific needs.

With the principle of "Quality Parts,Customers Priority,Honest Operation,and Considerate Service",our business mainly focus on the distribution of electronic components. Line cards we deal with include Microchip,ALPS,ROHM,Xilinx,Pulse,ON,Everlight and Freescale. Main products comprise IC,Modules,Potentiometer,IC Socket,Relay,Connector.Our parts cover such applications as commercial,industrial, and automotives areas.

We are looking forward to setting up business relationship with you and hope to provide you with the best service and solution. Let us make a better world for our industry!



Contact us

Tel: +86-755-8981 8866 Fax: +86-755-8427 6832

Email & Skype: info@chipsmall.com Web: www.chipsmall.com

Address: A1208, Overseas Decoration Building, #122 Zhenhua RD., Futian, Shenzhen, China



D6 SPST Momentary Key Switches



Features/Benefits

- Easy X, Y coding on single side PCB
- Positive tactile feedback
- High temperature type available
- Wide variety of colors & styles
- RoHS compliant and compatible

Typical Applications

- Automotive
- Video
- Electronic games
- Appliances

Construction

FUNCTION: momentary
CONTACT ARRANGEMENT: 1 make contact (SPST), NO
DISTANCE BETWEEN BUTTON CENTERS, MIN.: 12,7 (0.500)
TERMINALS: PC pins

Electrical

SWITCHING POWER MAX.: 6 VA
SWITCHING VOLTAGE MAX.: 32 V DC
SWITCHING CURRENT MAX.: 100 mA DC
DIELECTRIC STRENGTH (50 Hz / 1 min): 1000 V
OPERATING LIFE with max. switching power: (10⁵ operations)
CONTACT RESISTANCE: ≤100 mΩ
INSULATION RESISTANCE: ≥10¹¹ Ω
BOUNCE TIME: ≤ 3 ms

Mechanical

SWITCHING TRAVEL: 0,8 ± 0,2 (0.0301 ± 0.0078)
OPERATING FORCE: 1.3 N ± 30% (130 grams ± 30%)

Environmental

OPERATING TEMPERATURE: -20°C to 85°C.

Process

SOLDERABILITY:

Hand soldering: 350°C for 3 seconds
Wave or bath soldering: 260°C for 5 seconds
Cleaning: Use solvents compatible with ABS

How To Order

Our easy build-a-switch concept allows you to mix and match options to create the switch you need. To order, select desired option from each category and place it in the appropriate box.

Switch

	D	6				L	F	S
Series								
D6C	Square							
D6R	Round							
D6F	Flat*							
D6L	Plunger*							
			Switch Color					
			00	White				
			10	Gray				
			30	Yellow				
			40	Red				
			50	Green				
			60	Blue				
			80	Ivory				
			90	Black				
			RoHS compliant and compatible.					

*Available in black only.

Button

Buttons can be ordered separately.
Shipped in bulk.

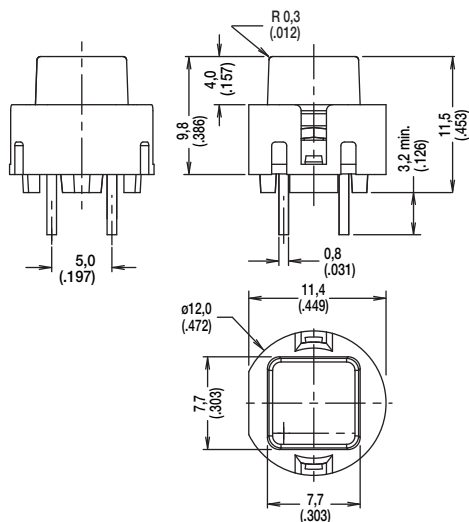
D6 button for use with D6C only.

	B	T	N	D	6		
Series							
BTND6	Button						
							Button Color
							00 White
							10 Gray
							30 Yellow
							40 Red
							50 Green
							60 Blue
							80 Ivory
							90 Black

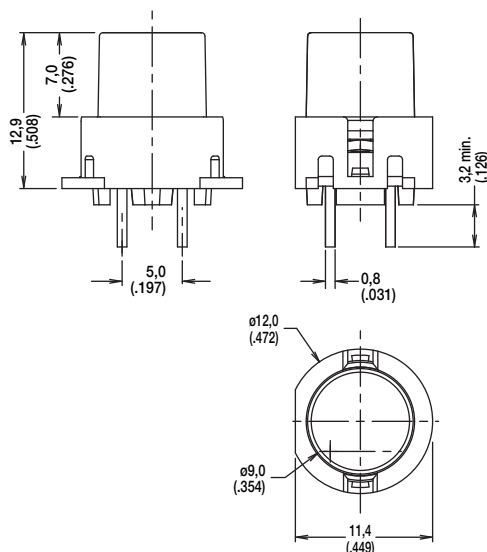
D6 SPST Momentary Key Switches

SERIES 

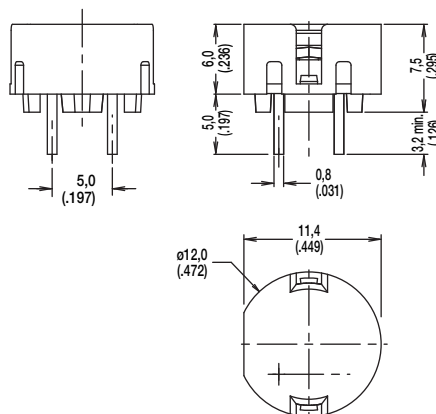
D6C



D6R



D6F ONLY AVAILABLE IN BLACK



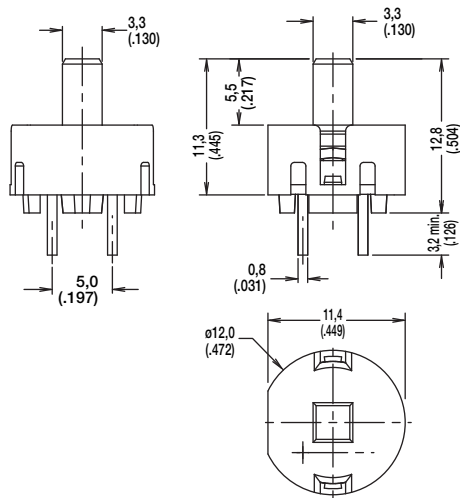
Dimensions are shown: mm (inch)
Specifications and dimensions subject to change

www.ittcannon.com

D6
SPST Momentary Key Switches

SERIES 

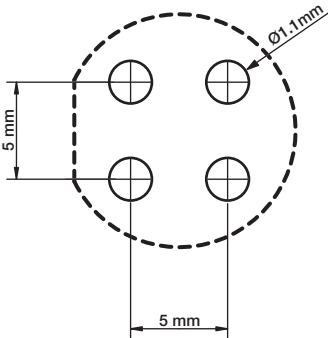
D6L ONLY AVAILABLE IN BLACK



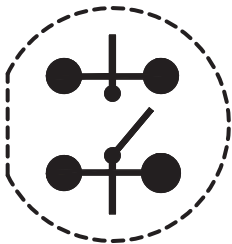
SWITCH COLORS 

OPTION CODE	SWITCH COLOR
00	WHITE
10	GRAY
30	YELLOW
40	RED
50	GREEN
60	BLUE
80	IVORY
90	BLACK

PCB Layout



Electrical Diagram



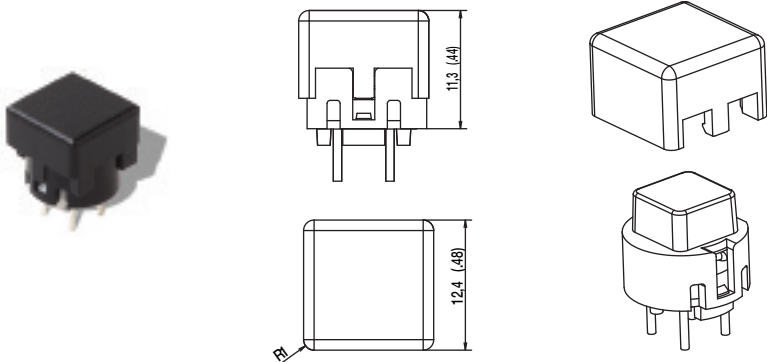
Dimensions are shown: mm (inch)
Specifications and dimensions subject to change

D6 SPST Momentary Key Switches

BUTTON AVAILABLE

BTND6 Buttons must be ordered separately. Shipped in bulk.

NOTE: Only compatible with D6C.



OPTION CODE	BUTTON COLOR
00	WHITE
10	GRAY
30	YELLOW
40	RED
50	GREEN
60	BLUE
80	IVORY
90	BLACK



Key Switches



Dimensions are shown: mm (inch)
Specifications and dimensions subject to change