



Chipsmall Limited consists of a professional team with an average of over 10 year of expertise in the distribution of electronic components. Based in Hongkong, we have already established firm and mutual-benefit business relationships with customers from,Europe,America and south Asia,supplying obsolete and hard-to-find components to meet their specific needs.

With the principle of “Quality Parts,Customers Priority,Honest Operation,and Considerate Service”,our business mainly focus on the distribution of electronic components. Line cards we deal with include Microchip,ALPS,ROHM,Xilinx,Pulse,ON,Everlight and Freescale. Main products comprise IC,Modules,Potentiometer,IC Socket,Relay,Connector.Our parts cover such applications as commercial,industrial, and automotives areas.

We are looking forward to setting up business relationship with you and hope to provide you with the best service and solution. Let us make a better world for our industry!



Contact us

Tel: +86-755-8981 8866 Fax: +86-755-8427 6832

Email & Skype: info@chipsmall.com Web: www.chipsmall.com

Address: A1208, Overseas Decoration Building, #122 Zhenhua RD., Futian, Shenzhen, China



Customer Information Sheet

DRAWING No.: D9XXX-XX

SHEET 2 OF 2

IF IN DOUBT - ASK

©

NOT TO SCALE

THIRD ANGLE PROJECTION

ALL DIMENSIONS IN mm

PART No.	No. OF CONTACTS	No. OF CENTRE BARS	DIM 'A'	DIM 'B'	DIM 'C'	DIM 'D'
D9206-XX	6	0	7.62	5.08	10.16	7.62
D9208-XX	8	0	10.16	7.62	10.16	7.62
D9214-XX	14	0	17.78	15.24	10.16	7.62
D9216-XX	16	0	20.32	17.78	10.16	7.62
D9218-XX	18	0	22.86	20.32	10.16	7.62
D9220-XX	20	1	25.40	22.86	10.16	7.62
D9222-XX	22	1	27.94	25.40	12.70	10.16
D9224-XX	24	1	30.48	27.94	17.78	15.24
D9228-XX	28	1	35.62	33.02	17.78	15.24
D9232-XX	32	1	40.64	38.10	17.78	15.24
D9240-XX	40	2	50.80	48.26	17.78	15.24
D9248-XX	48	2	60.96	58.42	25.28	22.86
D9264-XX	64	2	81.28	78.74	25.28	22.86
D9724-XX	24	1	30.48	27.94	12.70	10.16
D9922-XX	22	1	27.94	25.40	10.16	7.62
D9924-XX	24	0	30.48	27.94	10.16	7.62
D9948-XX	48	2	60.96	58.42	17.78	15.24

SPECIFICATION:

MATERIAL:
 MOULDING = 30% GLASS-FILLED POLYESTER UL94V-0, BLACK
 CONTACTS = BRASS

FINISH:
 CONTACTS:
 01 = 3.5-5.0µm TIN OVER 2µm NICKEL
 05 = 0.05-0.10µm GOLD OVER 2µm NICKEL

ELECTRICAL:
 CURRENT RATING AT 25°C = 1.5A
 CURRENT RATING AT 85°C = 0.25A
 CONTACT RESISTANCE (INITIAL) = 15 mΩ MAX
 CONTACT RESISTANCE (AFTER CONDITIONING) = 23 mΩ MAX
 INSULATION RESISTANCE (INITIAL) = 1,000 MΩ MIN
 INSULATION RESISTANCE (AFTER CONDITIONING) = 100 MΩ MIN

ENVIRONMENTAL:
 TEMPERATURE RANGE = -55°C TO +125°C

PACKING:
 TUBE

FOR COMPLETE SPECIFICATION, SEE COMPONENT SPECIFICATION C004XX (LATEST ISSUE)

ORDER CODE:

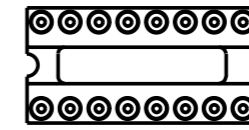
D9XXX-XX

PITCH CODE
SEE TABLE

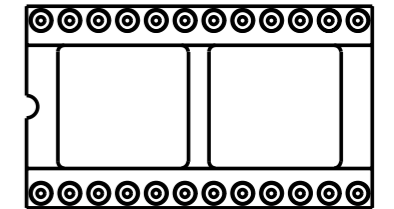
TOTAL No. OF CONTACTS

FINISH
 01 - TIN
 05 - GOLD

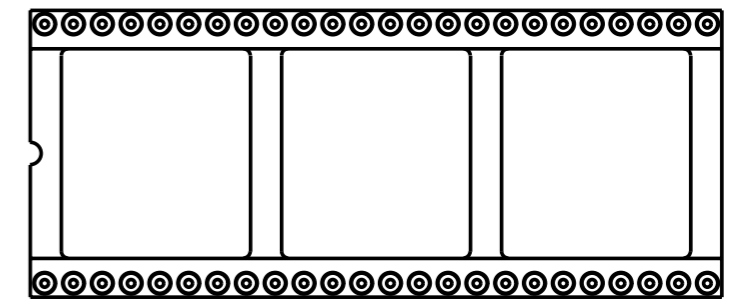
ILLUSTRATION OF NUMBER OF CENTRE BARS (SEE TABLE)



0 BARS



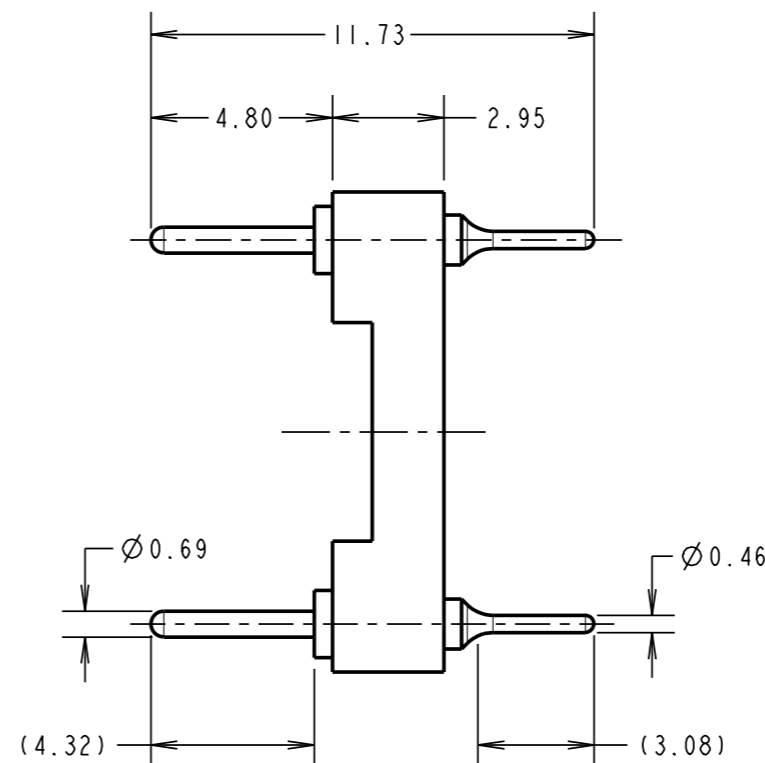
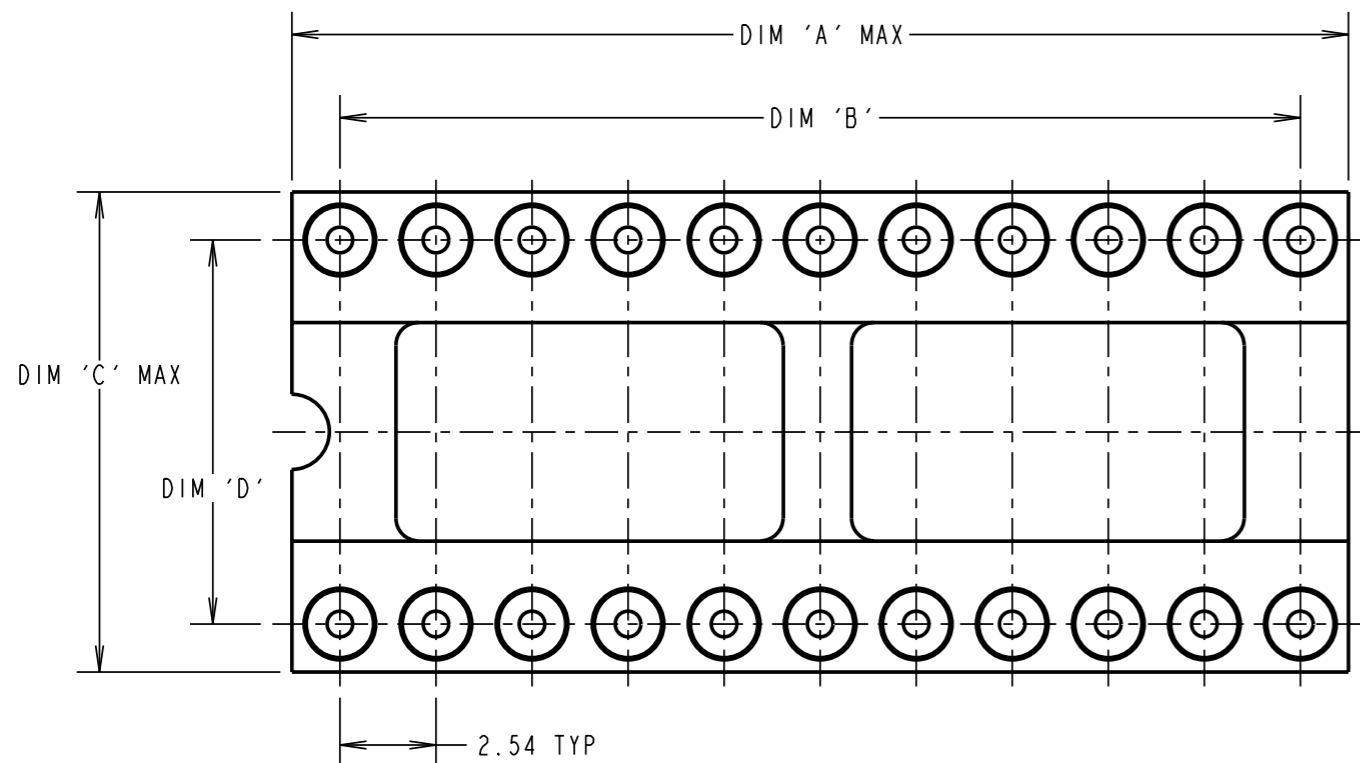
1 BAR



2 BARS

NOTES:

1. RECOMMENDED PCB HOLE SIZE = Ø0.80mm MIN.



WJB	8	03.03.03	7324
NAME	ISS.	DATE	C/NOTE
APPROVED: P. D. COLLINS			
CHECKED: M. G. PLESTED			
DRAWN: J. A. KEIR			
CUSTOMER REF.:			
ASSEMBLY DRG:			

HARWIN

HARWIN INC U.S.A. TEL: (812) 542 2546 FAX: (812) 542 2541	HARWIN PLC U.K. TEL: 023 9237 0451 FAX: 023 9231 4590	HARWIN PTE SINGAPORE TEL: 65 6779 4909 FAX: 65 6779 3868
--	--	---

THIS DRAWING AND ANY INFORMATION OR DESCRIPTIVE MATTER SET OUT HEREON ARE CONFIDENTIAL AND COPYRIGHT PROPERTY OF THE HARWIN GROUP AND MUST NOT BE DISCLOSED, LOANED, COPIED OR USED FOR MANUFACTURING, TENDERING OR FOR ANY OTHER PURPOSE WITHOUT THEIR WRITTEN PERMISSION.

TOLERANCES
 X. = ±1mm
 X.X = ±0.25mm
 X.XX = ±0.10mm
 X.XXX = ±0.01mm
 ANGLES = ±5°
 UNLESS STATED

MATERIAL:
SEE ABOVE

FINISH: SEE ABOVE

S/AREA: mm²

TITLE: DIL I.C. THROUGH HEADER ASSEMBLY

DRAWING NUMBER: D9XXX-XX

SHT 2 OF 2