



Chipsmall Limited consists of a professional team with an average of over 10 year of expertise in the distribution of electronic components. Based in Hongkong, we have already established firm and mutual-benefit business relationships with customers from,Europe,America and south Asia,supplying obsolete and hard-to-find components to meet their specific needs.

With the principle of "Quality Parts,Customers Priority,Honest Operation,and Considerate Service",our business mainly focus on the distribution of electronic components. Line cards we deal with include Microchip,ALPS,ROHM,Xilinx,Pulse,ON,Everlight and Freescale. Main products comprise IC,Modules,Potentiometer,IC Socket,Relay,Connector.Our parts cover such applications as commercial,industrial, and automotives areas.

We are looking forward to setting up business relationship with you and hope to provide you with the best service and solution. Let us make a better world for our industry!



Contact us

Tel: +86-755-8981 8866 Fax: +86-755-8427 6832

Email & Skype: info@chipsmall.com Web: www.chipsmall.com

Address: A1208, Overseas Decoration Building, #122 Zhenhua RD., Futian, Shenzhen, China



User's Manual

USB 2.0 TO IDE & SATA Cable

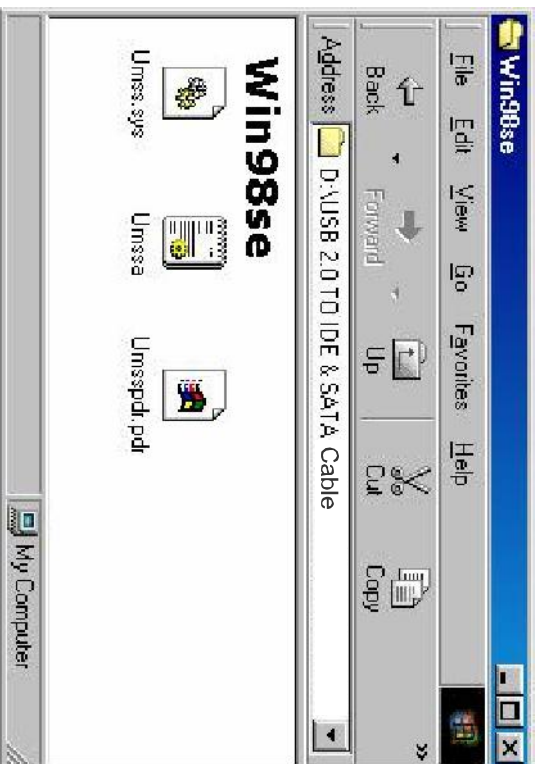
1. Characteristics

- Support SATA spread-spectrum transmitter
- Support SATA II Asynchronous Signal Recovery (Hot Plug) feature
- Compliance with USB 2.0 (Hi-Speed USB) electrical specification
- Compliance with USB Mass Storage Class Bulk-Only Transport Specification
- Support 480Mbps High Speed (HS) and 12Mbps Full Speed USB operation
- Support ATA/ATAPI-7
- Support ATA/ATAPI Ultra DMA Mode
- Support ATA/ATAPI PACKET command feature set
- Support ATA/ATAPI LBA48 addressing mode
- Support dual LUN (Logic Unit Number) for USB to ATA/ATAPI
- Support Windows 98se, Windows ME, Windows 2000, Windows XP
- Need driver installation under Windows 98se

2. Software Installation

Windows 98se

- 1) Please put the enclosed CD into the CD-ROM

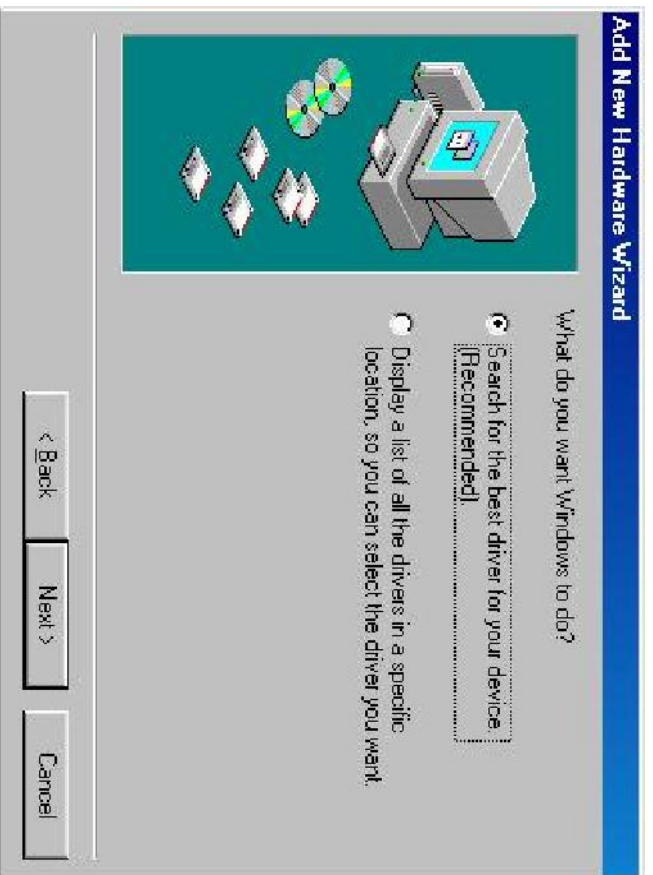


- 2) Please plug this USB HDD in the USB port of your computer.

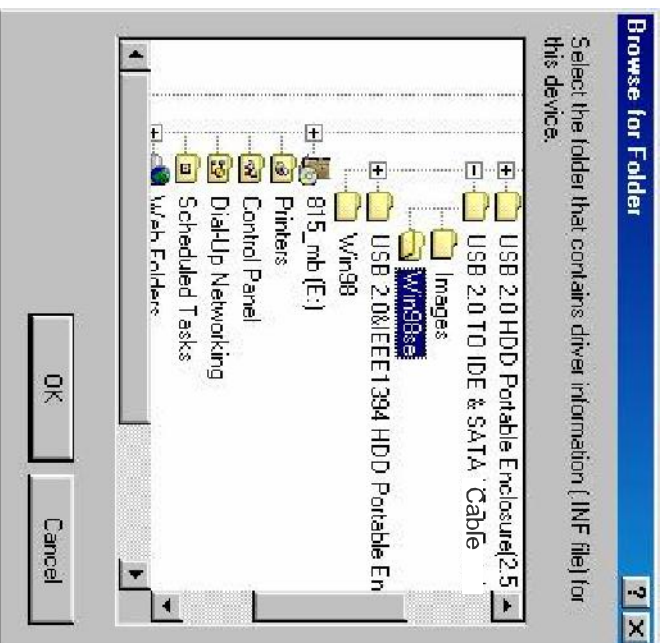
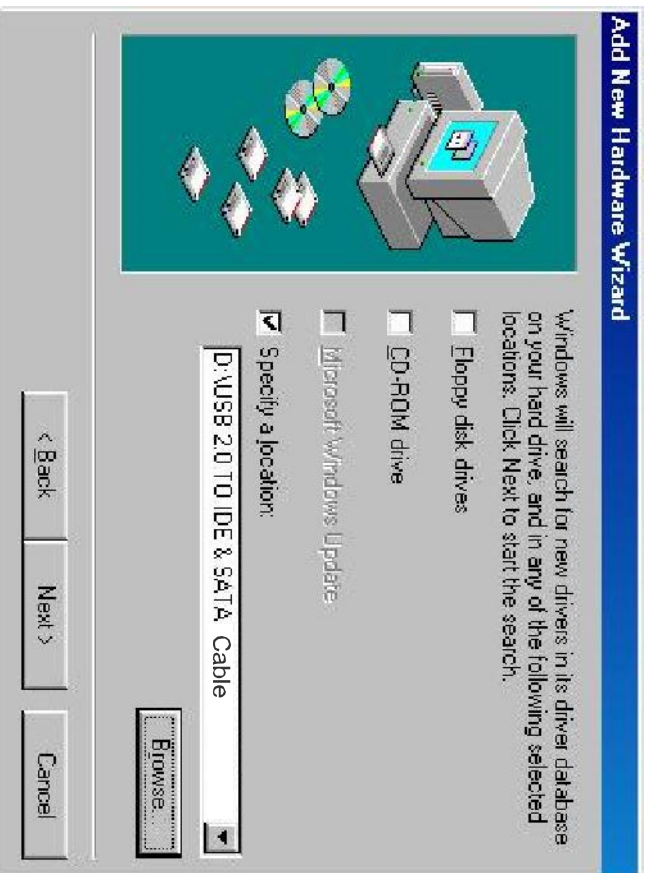
- 3) The system will detect it and display the "Add New Hardware Wizard" dialog, please press "Next"



4) When the following screen displays, please check "Search for the best driver for your device (Recommended)" and press "Next".



5) When the following screen displays, please locate the driver folder included by the driver CD-ROM shipped with this USB HDD



6) When the following screen displays, please press "Next"



7) When the following screen displays, please press "Finish"

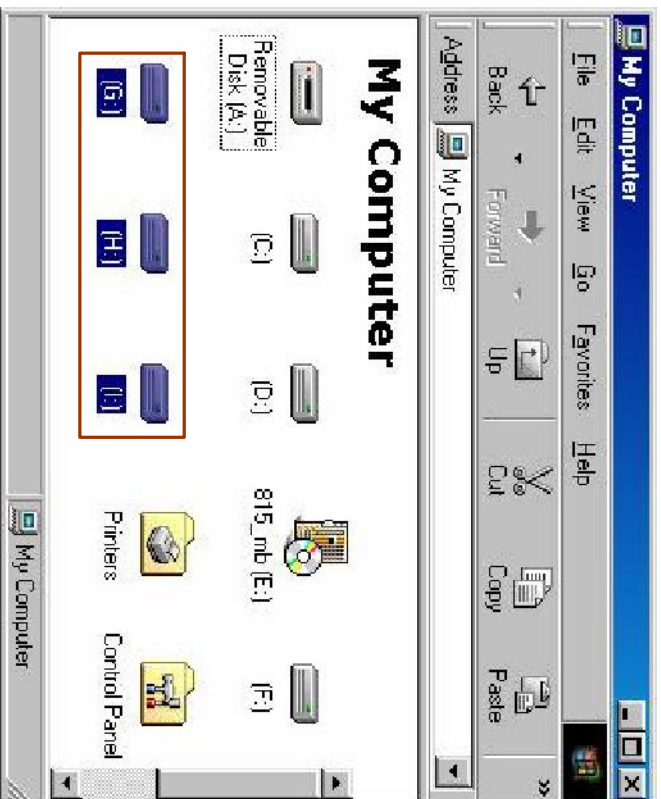


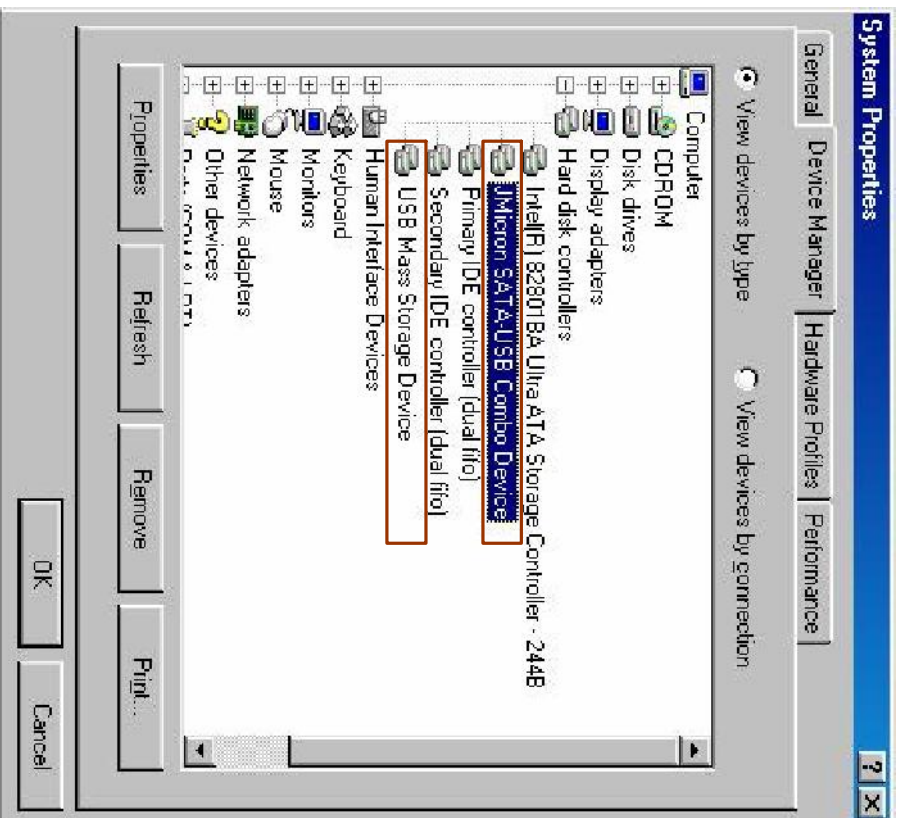
Windows ME/2000/XP

No need driver installation in those OS platform.

3. Verification

Please track the path "My computer" and "My computer" --> "System Properties" --> "Device Manager" and expand the item "Hard disk controllers", you should meet the following screen.





4. If you use a all new HDD

- 1) Please use "Fdisk " to set the capacity of your HDD, but this will destroy all the data in the HDD.
- 2) Format your HDD by standard procedures, if you can't find your new HDD, please following the steps in FAQ-1

Note: "Fdisk" or "Format" will destroy all the data and program in the HDD you select. Please make sure there is not any data in it, or all the data have a backup copy.

5. FAQ

Q: I could see the icon at the right down comer on the screen, but I still couldn't find my external HDD.

A: a. Please make sure your HDD has been installed correctly.

b. Please make sure your HDD has been set in "Master" position,

c. Please make sure you have installed correct driver for this USB HDD.

d. Please make sure your HDD has been formatted. If no, please format your hard drive first.

e. If you are sure you have installed correctly all the hardware and software, please follow the steps as below to catch your HDD.

i. Enter "Control Panel" and enter "System" icon

ii. Double click it to find a "System Manager".

iii. Find a "Disk drivers" category. There should be 3 drivers, double click the HDD

!V. Find the "Setting" button and choose the option "Removable Drive"

V. Your computer will automatically assign a new letter to this USB HDD after restarting your computer

6. Caution!!

- a. If you are not sure what OS you are using, please contact your PC dealer.
- b. Please don't put this USB HDD in a humid or high-temperature environment.
- c. If your first installation is failed, please firstly remove the wrong device throughs the path as below: path=Control Panel > System > System Properties > Device Manager > Please remove the items with "?" or "!" mark.