



Chipsmall Limited consists of a professional team with an average of over 10 year of expertise in the distribution of electronic components. Based in Hongkong, we have already established firm and mutual-benefit business relationships with customers from,Europe,America and south Asia,supplying obsolete and hard-to-find components to meet their specific needs.

With the principle of “Quality Parts,Customers Priority,Honest Operation,and Considerate Service”,our business mainly focus on the distribution of electronic components. Line cards we deal with include Microchip,ALPS,ROHM,Xilinx,Pulse,ON,Everlight and Freescale. Main products comprise IC,Modules,Potentiometer,IC Socket,Relay,Connector.Our parts cover such applications as commercial,industrial, and automotives areas.

We are looking forward to setting up business relationship with you and hope to provide you with the best service and solution. Let us make a better world for our industry!



Contact us

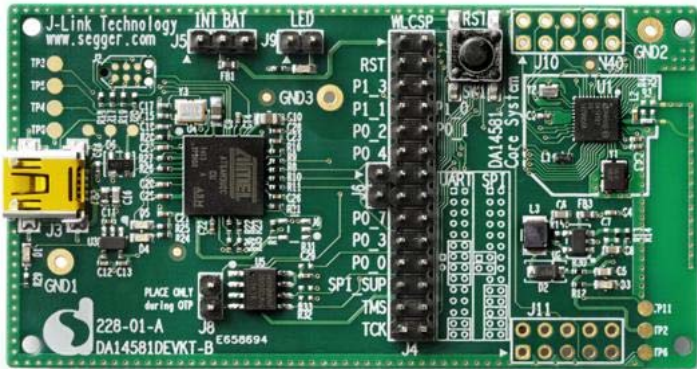
Tel: +86-755-8981 8866 Fax: +86-755-8427 6832

Email & Skype: info@chipsmall.com Web: www.chipsmall.com

Address: A1208, Overseas Decoration Building, #122 Zhenhua RD., Futian, Shenzhen, China



DA14581 Development Kit - Basic



This Basic development kit gives you all flexibility to develop with confidence. All of the DA14581's I/Os are available and mapped on to expansion connectors. A debugger is provided on the PCB which in combination with SmartSnippets™, Dialog's complete software environment, enables you to program and test your A4WP or HCI application.

Content:

- Board
- Battery
- USB cable
- Quick starting guide

Ordering information

Ordering code:

Development board	DA14581DEVKT-B
-------------------	----------------