



Chipsmall Limited consists of a professional team with an average of over 10 year of expertise in the distribution of electronic components. Based in Hongkong, we have already established firm and mutual-benefit business relationships with customers from,Europe,America and south Asia,supplying obsolete and hard-to-find components to meet their specific needs.

With the principle of “Quality Parts,Customers Priority,Honest Operation,and Considerate Service”,our business mainly focus on the distribution of electronic components. Line cards we deal with include Microchip,ALPS,ROHM,Xilinx,Pulse,ON,Everlight and Freescale. Main products comprise IC,Modules,Potentiometer,IC Socket,Relay,Connector.Our parts cover such applications as commercial,industrial, and automotives areas.

We are looking forward to setting up business relationship with you and hope to provide you with the best service and solution. Let us make a better world for our industry!



## Contact us

Tel: +86-755-8981 8866 Fax: +86-755-8427 6832

Email & Skype: info@chipsmall.com Web: www.chipsmall.com

Address: A1208, Overseas Decoration Building, #122 Zhenhua RD., Futian, Shenzhen, China



# SmartBond™ Bluetooth® mesh SDK

## Software Development Kit for Bluetooth mesh solution using DA14682/3 and DA14585/6

**Dialog Semiconductor offers a complete solution for the recently adopted Bluetooth mesh specification**

Traditionally used for close-range, point-to-point communications for pairing devices, the Bluetooth® protocol has been greatly enhanced by the new mesh specification. The recently adopted Bluetooth mesh specification enables a 'many-to-many' communication topology offering both an extended range and a greater number of nodes.

Mesh functionality opens up a wide range of new applications for Bluetooth in markets such as smart home, lighting, industrial automation, beaconing and asset tracking. To make the most of these new opportunities, you need to design the new mesh capabilities into your products, easily and quickly.



Dialog offers you the perfect way to achieve this with complete mesh software support for the latest SmartBond™ products, starting with the DA14682 and DA14683, and then closely followed by the DA14586 and DA14585, including its high temperature derivatives.

The software include a full set of development tools for Bluetooth mesh applications, tool chain and reference application source code which are all available within our very own **SmartSnippets™** development environment. Dialog also provides an iOS and Android application to allow their customers to provision, configure and control Bluetooth mesh nodes from their smartphone or tablet.

## Applications

- ▶ Smart Home applications
- ▶ Smart lighting
- ▶ Industrial automation
- ▶ Sensor networks
- ▶ Commercial networks
- ▶ Cloud connected applications

## Key Features

### Open, global and fully defined standard

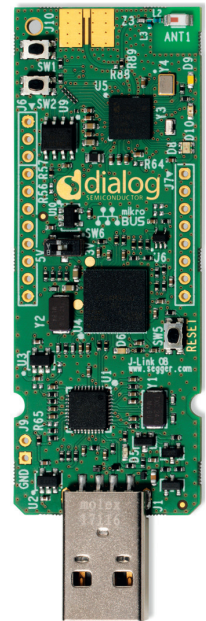
- ▶ Bluetooth SIG certified
- ▶ Guaranteed cross-vendor interoperability
- ▶ Security architecture that can be publicly audited

### Robust performance, scalability and reliable

- ▶ Fast network (by a wide margin)
- ▶ Self-healing mesh with multicast and multi-path delivery
- ▶ Scalability to thousands of nodes

### Ease of deployment, ease of use

- ▶ No unnecessary complexity
- ▶ Compatible with an enormous installed base of devices (smartphones, tablets and laptops)
- ▶ No hub or gateway required
- ▶ Reduced technical risk and fast time-to-market
- ▶ Low memory footprint and low MIPS requirement
- ▶ Highly configurable to suit the product needs
- ▶ Support for Software Over The Air firmware updates (SUOTA)
- ▶ Reference applications
- ▶ Android and iOS App provided
- ▶ Flexible Hardware Development kits with onboard debugger  
For example: DA14683 Development Kit-USB, including the mikroBUS™ interface, enabling easy connections to multitude of sensor shield.



DA14683 Development Kit - USB

For more information and purchasing please visit  
<https://support.dialog-semiconductor.com/connectivity/>



### Dialog Semiconductor Worldwide Sales Offices - [www.dialog-semiconductor.com](http://www.dialog-semiconductor.com)

email: [info@diasemi.com](mailto:info@diasemi.com)

United Kingdom  
Phone: +44 1793 757700

The Netherlands  
Phone: +31 73 640 88 22

Japan  
Phone: +81 3 5769 5100

Singapore  
Phone: +65 648 499 29

Korea  
Phone: +82 2 3469 8200

Germany  
Phone: +49 7021 805-0

North America  
Phone: +1 408 845 8500

Taiwan  
Phone: +886 281 786 222

Hong Kong  
Phone: +852 3769 5200

China (Shenzhen)  
Phone: +86 755 2981 3669  
China (Shanghai)  
Phone: +86 21 5424 9058

This publication is issued to provide outline information only, which unless agreed by Dialog Semiconductor may not be used, applied, or reproduced for any purpose or be regarded as a representation relating to products. All use of Dialog Semiconductor products, software and applications referred to in this document are subject to Dialog Semiconductor's [Standard Terms and Conditions of Sale](#), available on the company website ([www.dialog-semiconductor.com](http://www.dialog-semiconductor.com)) unless otherwise stated.

Dialog and the Dialog logo are trademarks of Dialog Semiconductor plc or its subsidiaries. All other product or service names are the property of their respective owners.

© Copyright 2018 Dialog Semiconductor. All rights reserved.