



Chipsmall Limited consists of a professional team with an average of over 10 year of expertise in the distribution of electronic components. Based in Hongkong, we have already established firm and mutual-benefit business relationships with customers from,Europe,America and south Asia,supplying obsolete and hard-to-find components to meet their specific needs.

With the principle of “Quality Parts,Customers Priority,Honest Operation,and Considerate Service”,our business mainly focus on the distribution of electronic components. Line cards we deal with include Microchip,ALPS,ROHM,Xilinx,Pulse,ON,Everlight and Freescale. Main products comprise IC,Modules,Potentiometer,IC Socket,Relay,Connector.Our parts cover such applications as commercial,industrial, and automotives areas.

We are looking forward to setting up business relationship with you and hope to provide you with the best service and solution. Let us make a better world for our industry!



## Contact us

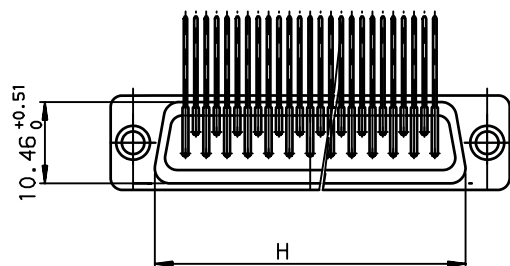
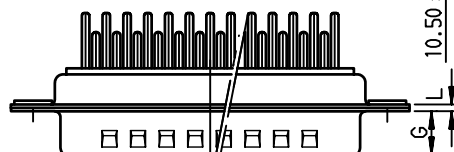
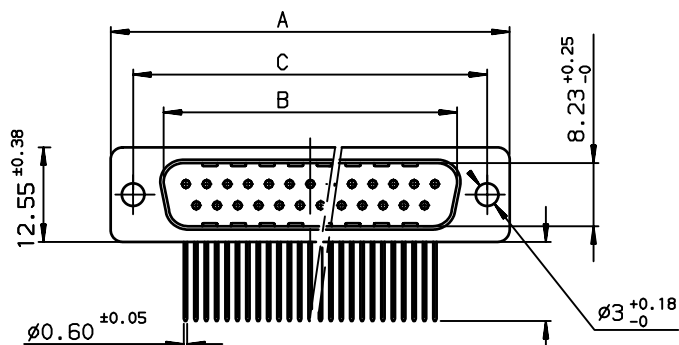
Tel: +86-755-8981 8866 Fax: +86-755-8427 6832

Email & Skype: [info@chipsmall.com](mailto:info@chipsmall.com) Web: [www.chipsmall.com](http://www.chipsmall.com)

Address: A1208, Overseas Decoration Building, #122 Zhenhua RD., Futian, Shenzhen, China



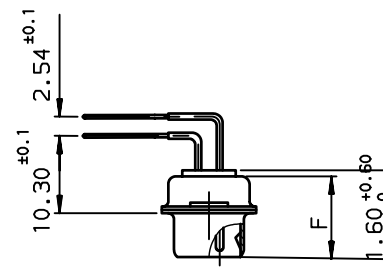




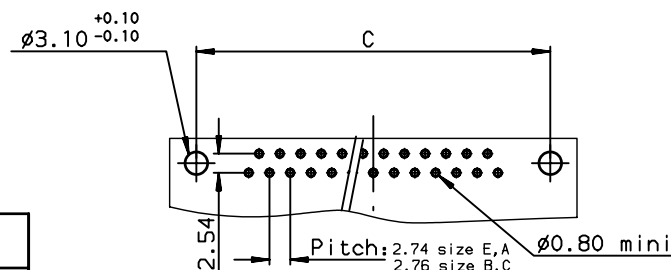
Dimensions are in millimeters

Shell size	Number of contacts	A <sup>+0.75</sup> <sub>0</sub>	B <sup>+0.25</sup> <sub>0</sub>	C <sup>±0.12</sup>	F <sup>+0.51</sup> <sub>0</sub>	G <sup>+0.25</sup> <sub>0</sub>	H <sup>+0.51</sup> <sub>0</sub>	L <sup>+0.22</sup> <sub>0</sub>	Part number
E	09	30.43	16.46	24.99	10.64	6.05	19.02	0.80	-
A	15	38.76	24.54	33.32	10.64	6.05	27.25	0.80	DAM15P500CSP82
B	25	52.65	38.25	47.04	10.64	6.05	41.02	0.80	-
C	37	68.94	54.71	63.50	10.64	6.05	57.45	0.80	-

rev	ecn no	dr	date
A	LS06-0060	MPE	2006/04/11
B	LS06-0097	LGO	2006/07/27
C	LS08-0212	MPE	2008/11/18
-	-	-	-
-	-	-	-
-	-	-	-
-	-	-	-



#### PC BOARD LAYOUT



#### REFERENCE SPECIFICATIONS

-NFC 93425 (in compliance with HE 501)

#### PHYSICAL CHARACTERISTICS

-INSULATOR MATERIAL: THERMOPLASTIC UL94V0

-CONTACT MATERIAL: BRASS

PLATING: GOLD OVER NICKEL

-SHELLS: STEEL, CADMIUM PLATED

#### ELECTRICAL CHARACTERISTICS

-NOMINAL CURRENT: 7.5A

-CONTACT RESISTANCE: <7.3 m Ohms

-CONTACT/CONTACT: >1000 V

-CONTACT/GROUND: >1200 V

-INSULATION RESISTANCE: >5000 MOhms

#### ENVIRONMENTAL CHARACTERISTICS

- CLIMATIC CATEGORY: 55/125/56

TEMPERATURE RANGE -55°C TO +125°C

DAMP HEAT STEADY STATE 56 DAYS

SALT SPRAY 48 HOURS

#### European Views

www.fciconnect.com		surface ISO 1302	tolerance std ISO 406 ISO 1101	projection A3	mm
		TOLERANCES UNLESS OTHERWISE SPECIFIED			
Dr	M PESSON	2006/04/11	ANGULAR	0.X	±0.1
Eng	P LEGARE	2006/04/11	LINEAR	0.XX	±0.1
Chr	P LEGARE	2006/04/11	0.XX' ±2°	0.XXX	±0.1
Appr	P LEGARE	2006/04/11	Product family	D-SUB	Spec ref -
title D SUB MARK I MALE		dwg no C01-8637-1724		Rev. C	
RA SPECIF SP82		CUSTOMER		sheet 1 of 1	
catalog no					