



Chipsmall Limited consists of a professional team with an average of over 10 year of expertise in the distribution of electronic components. Based in Hongkong, we have already established firm and mutual-benefit business relationships with customers from,Europe,America and south Asia,supplying obsolete and hard-to-find components to meet their specific needs.

With the principle of “Quality Parts,Customers Priority,Honest Operation,and Considerate Service”,our business mainly focus on the distribution of electronic components. Line cards we deal with include Microchip,ALPS,ROHM,Xilinx,Pulse,ON,Everlight and Freescale. Main products comprise IC,Modules,Potentiometer,IC Socket,Relay,Connector.Our parts cover such applications as commercial,industrial, and automotives areas.

We are looking forward to setting up business relationship with you and hope to provide you with the best service and solution. Let us make a better world for our industry!



Contact us

Tel: +86-755-8981 8866 Fax: +86-755-8427 6832

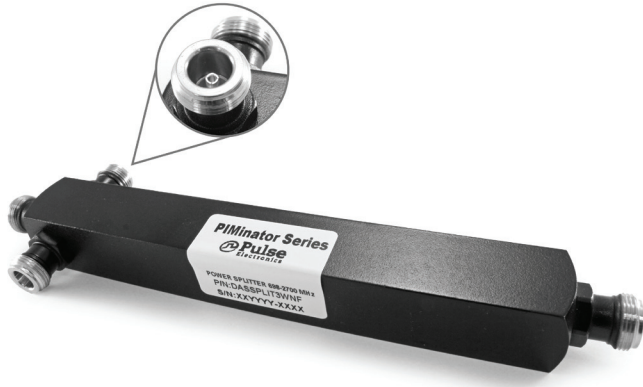
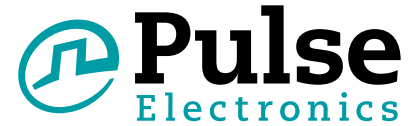
Email & Skype: info@chipsmall.com Web: www.chipsmall.com

Address: A1208, Overseas Decoration Building, #122 Zhenhua RD., Futian, Shenzhen, China



PIMinator™ Low PIM iDAS Three Way Power Splitter

Pulse Part Number DASSPLIT3WNF



Pulse is proud to offer industry leading -155 dBc certified low PIM DAS power splitters. The Pulse Electronics PIMinator™ line of DAS in-building low PIM power splitters meets the most demanding PIM requirements for 2G, 3G, and 4G bands.

These low PIM power splitters help meet the operators increasing demand for high data rates and streaming video for mobile devices. The wide band design meets the needs of operators around the World.

Models include a 2 way, 3 way, and 4 way power splitter with NF connectors as well as a 2 way power splitter with DIN female connectors.

Features

- Industry leading -155 dBc PIM rating
- Covers cellular bands and WiMax from 698 - 2700 MHz
- RoHS Compliant Product

Applications

- In-building DAS systems requiring best PIM performance

Electrical Specifications

Frequency [MHz]	698 - 2700
Nominal Impedance [Ω]	50
VSWR [Max]	1.22:1
Insertion Loss [dB Max]	5.0
Maximum Input Power [W]	300
PIM at 2 x +43 dBm [dBc Min]	-155
Connector Type	N Female

Mechanical Specifications

Finish	Black epoxy coat
Ingress Protection	IP-67
Weight [oz/g]	14.24 / 403.7
Overall Size [in/mm]	7.53 X 2.38 X .98 / 191.2 X 60.6 X 25

Confidential and Proprietary — Pulse Electronics — All Rights Reserved — 2013

This document contains confidential and proprietary information of Pulse Electronics, Inc. (Pulse) and is protected by copyright, trade secret and other state and federal laws. Its receipt or possession does not convey any rights to reproduce, disclose its contents, or to manufacture, use or sell anything it may describe. Reproduction, disclosure or use without specific written authorization of Pulse is strictly forbidden.