



Chipsmall Limited consists of a professional team with an average of over 10 year of expertise in the distribution of electronic components. Based in Hongkong, we have already established firm and mutual-benefit business relationships with customers from,Europe,America and south Asia,supplying obsolete and hard-to-find components to meet their specific needs.

With the principle of "Quality Parts,Customers Priority,Honest Operation,and Considerate Service",our business mainly focus on the distribution of electronic components. Line cards we deal with include Microchip,ALPS,ROHM,Xilinx,Pulse,ON,Everlight and Freescale. Main products comprise IC,Modules,Potentiometer,IC Socket,Relay,Connector.Our parts cover such applications as commercial,industrial, and automotives areas.

We are looking forward to setting up business relationship with you and hope to provide you with the best service and solution. Let us make a better world for our industry!



Contact us

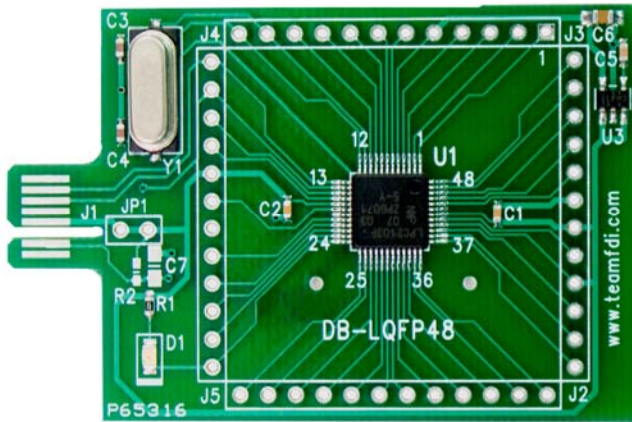
Tel: +86-755-8981 8866 Fax: +86-755-8427 6832

Email & Skype: info@chipsmall.com Web: www.chipsmall.com

Address: A1208, Overseas Decoration Building, #122 Zhenhua RD., Futian, Shenzhen, China



DB-LQFP48-LPC2103



USB-Dongle and Derivative Boards



The **DB-LQFP48-LPC2103** is the Derivative Board for the LPC2103 microcontroller in a 48 pin LQFP package. The **DB-LQFP48-LPC2103** requires the use of the USB-Dongle for power and a programming interface.

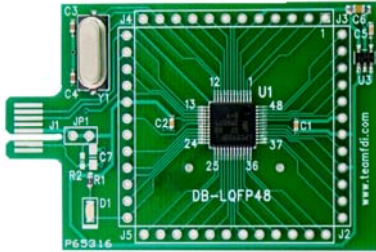
The USB-Dongle and **DB-LQFP48-LPC2103** allow quick and easy ICP programming of the LPC2103. The unit also provides a low cost platform for testing or prototyping of simple microcontroller based designs. The USB-Dongle provides a Virtual COM Port interface to the PC and allows hex files to be downloaded and programmed using Flash Magic or other common utilities. The USB-Dongle provides all power needed by the various Derivative Boards so no external power supply is required. Low cost Derivative Boards are available for many different microcontrollers from NXP. Please consult our website for details at www.teamfdi.com

Highlights

- Low cost tool for prototyping
- USB port powered so no external Power Supply required
- Supports USB 2.0
- Plugs directly into any standard USB Port – great for laptops
- Works with NXP free Flash Magic software that can be downloaded from the web
- USB-Dongle Kit Includes:
 - ◆ USB-Dongle
 - ◆ Download docs and software examples at www.teamfdi.com/USB_Dongle
 - ◆ Derivative Boards for many microcontrollers are available

Technical Details

The **DB-LQFP48-LPC2103** uses a PCB edge finger connector to interface to the USB-Dongle.



Board Dimensions 2.268" x 1.5"

Target Interface

The USB-Dongle includes a 14 pin connector to the Derivative Board that utilizes the following signals. Not all signals are used on all Derivative Boards:

ISP/ICPn	5V (USB power, unswitched)
Switched Power (3V for ICP) or Reset (High True for 8051 ISP)	Reset (Low True) (for ICP & LPC2000 ARM)
Ground	3V (unswitched)
PCL/SCL (ICP/I2C)	PDA/SDA (ICP/I2C)
TXD (UART)	RXD (UART)
MSIO (SPI)	PSEN/P0.14 (ISP entry)
SCLK (SPI)	MOSI (SPI)

Example of USB-Dongle and Derivative Board

USB-Dongle



DB-HVSON10-LPC9103

Headers – The **DB-LQFP48-LPC2103** brings every pin of the microcontroller out to a standard 0.10" spacing header footprint for easy probing of signals or to support prototyping or wire-wrapping. Consult the **DB-LQFP48-LPC2103** schematic if there are any questions about pin alignment from the microcontroller to the headers.

Power – The USB-Dongle provides the regulated 3.3V power required by the **DB-LQFP48-LPC2103** and an onboard LDO, U3, provides the regulated 1.8V. The DB has a power measurement jumper, JP1, to allow the user to easily measure the power consumption of the microcontroller. In the artwork, JP1 pin 1 is shorted to pin 2 so the board is continuously powered. The board can be easily modified by cutting JP1 and loading a standard 0.10" header.

LED - A green activity or status LED is provided at location D1 on the Derivative Board. This LED can be used to indicate when the microcontroller is being programmed or for other types of user activity under software control.

Crystal or Clock Frequency - The **DB-LQFP48-LPC2103** is clocked by an external 12.000 MHz crystal oscillator located at position Y1 on the DB.

Ordering Information

Order Online at www.digikey.com
Digi-Key Part #: 622-1013-ND
Availability: Stock
Digi-Key Contact Info:
1-800-DIGI-KEY Phone
(218) 681-3380 FAX

FDI Contact Info:
(800) 278-0293 Phone
(256) 883-1241 FAX

www.teamfdi.com

All brand names and product names are trademarks or registered trademarks of their respective holders.

FDI *Future Designs, Inc.*
Your Development Partner