



Chipsmall Limited consists of a professional team with an average of over 10 year of expertise in the distribution of electronic components. Based in Hongkong, we have already established firm and mutual-benefit business relationships with customers from,Europe,America and south Asia,supplying obsolete and hard-to-find components to meet their specific needs.

With the principle of "Quality Parts,Customers Priority,Honest Operation,and Considerate Service",our business mainly focus on the distribution of electronic components. Line cards we deal with include Microchip,ALPS,ROHM,Xilinx,Pulse,ON,Everlight and Freescale. Main products comprise IC,Modules,Potentiometer,IC Socket,Relay,Connector.Our parts cover such applications as commercial,industrial, and automotives areas.

We are looking forward to setting up business relationship with you and hope to provide you with the best service and solution. Let us make a better world for our industry!



Contact us

Tel: +86-755-8981 8866 Fax: +86-755-8427 6832

Email & Skype: info@chipsmall.com Web: www.chipsmall.com

Address: A1208, Overseas Decoration Building, #122 Zhenhua RD., Futian, Shenzhen, China



CUSTOMER PRINT

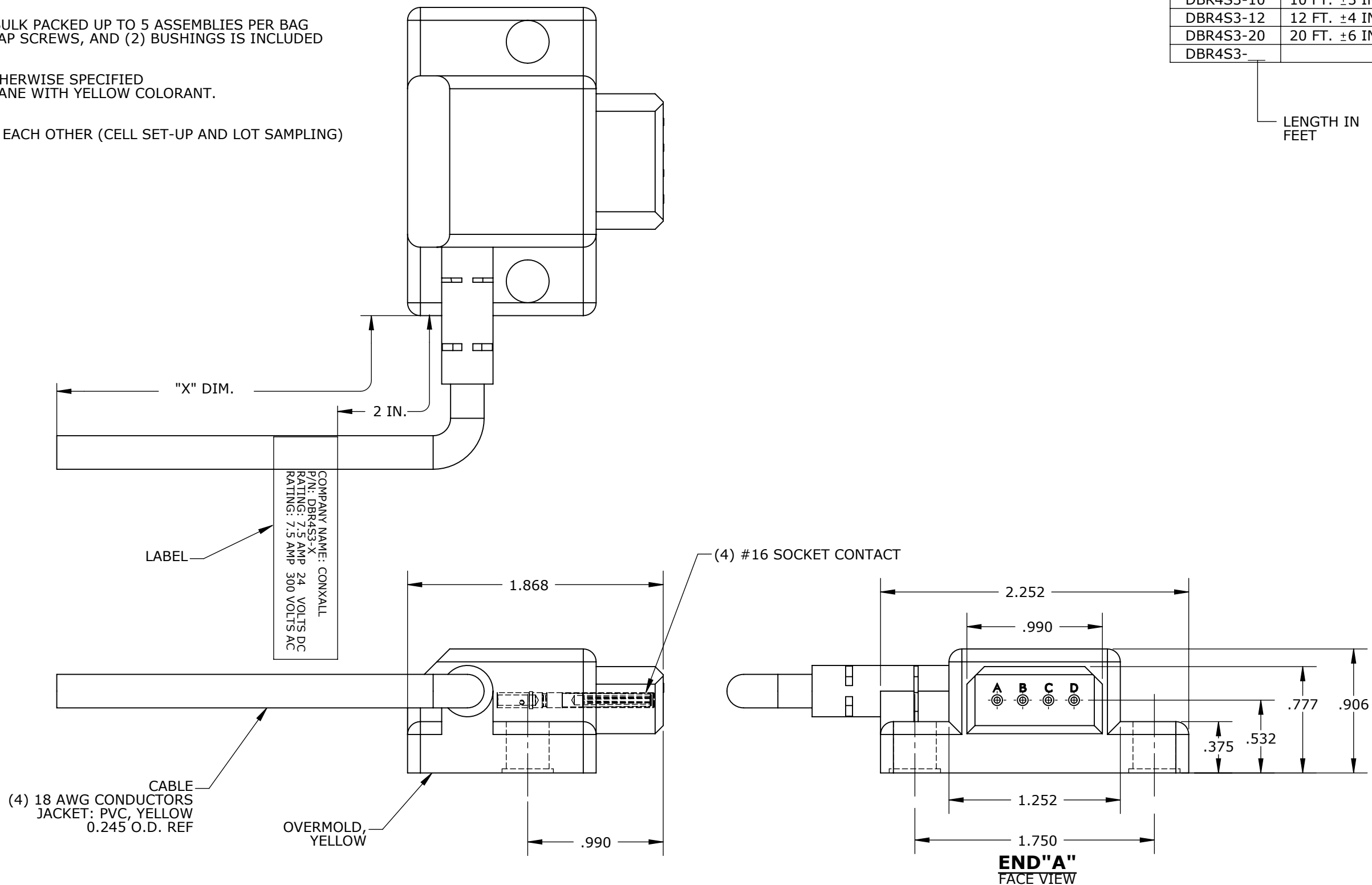
PART NUMBER: DBR4S3-XFAM

PART NO.	"X" DIM.
DBR4S3-6	6 FT. ±2 IN.
DBR4S3-10	10 FT. ±3 IN.
DBR4S3-12	12 FT. ±4 IN.
DBR4S3-20	20 FT. ±6 IN.
DBR4S3-	

LENGTH IN FEET

NOTES:

1. FINISHED PRODUCT TO BE COILED AND BULK PACKED UP TO 5 ASSEMBLIES PER BAG. HARDWARE KIT WITH (2) O-RINGS, (2) CAP SCREWS, AND (2) BUSHINGS IS INCLUDED WITH EACH DIE BLOCK.
2. FOR PART NUMBER SEE TABLE.
3. ALL DIMENSIONS REFERENCE UNLESS OTHERWISE SPECIFIED.
4. OVERMOLD BOOT MATERIAL: POLYURETHANE WITH YELLOW COLORANT.
5. ELECTRICAL TEST
 - a) PIN TO WIRE CONTINUITY
 - b) HI-POT @1500V DC ALL CONTACTS TO EACH OTHER (CELL SET-UP AND LOT SAMPLING)



COMPANY NAME: CONXALL
 P/N: DBR4S3-X
 RATING: 7.5 AMP 24 VOLTS DC
 RATING: 7.5 AMP 300 VOLTS AC

CABLE
 (4) 18 AWG CONDUCTORS
 JACKET: PVC, YELLOW
 0.245 O.D. REF

OVERMOLD,
 YELLOW

CUSTOMER APPROVAL

THIS DOCUMENT CONTAINS CONFIDENTIAL INFORMATION PROPRIETARY TO CONXALL CORPORATION. ANY REPRODUCTION, DISCLOSURE, OR USE OF THIS DOCUMENT /INFORMATION IS EXPRESSLY PROHIBITED UNLESS AUTHORIZED IN WRITING BY CONXALL CORPORATION.

APPROVED BY: _____
 DATE: _____

REV.	INIT.	DATE	DESCRIPTION
D	BZ	01-12-11	UPDATED MANUFACTURING DRAWING PER ECR 7731
C	BZ	11-04-09	UPDATED MANUFACTURING DRAWING PER ECR 7297
B	BZ	06-03-09	REMOVED HARDWARE FROM DRAWING, UPDATED NOTE 1 PER ECR 7211

ALL INFORMATION ILLUSTRATED IS THE PROPERTY OF CONXALL CORPORATION. UNAUTHORIZED DUPLICATION OR DISTRIBUTION OF THIS DOCUMENT IS PROHIBITED.	ORIG. DRAWN BY: BZ DATE: 04-03-09 CHECKED BY:	 601 E. WILDWOOD VILLA PARK, IL 60181
ALL UNITS ARE IN FEET, INCHES, FRACTION OF INCHES AND DECIMALS.	APPROVED BY: SCALE: NTS SIZE: B SHEET: 1 OF 1	
FILE: DBR4S3-XFAM DIRECTORY: SLW		TITLE: CABLE ASSEMBLY (YELLOW) 4 POLE, 90° FEMALE DIE BLOCK CUSTOMER: STANDARD PRODUCT PART NUMBER: DBR4S3-XFAM

WIRE COLOR CODE, END "A"			
POS. A	POS. B	POS. C	POS. D
RED/BLK	RED/WHT	RED	GRN

△ - CRITICAL CHARACTERISTIC FLAG PER SPEC. XXXX