



Chipsmall Limited consists of a professional team with an average of over 10 year of expertise in the distribution of electronic components. Based in Hongkong, we have already established firm and mutual-benefit business relationships with customers from,Europe,America and south Asia,supplying obsolete and hard-to-find components to meet their specific needs.

With the principle of “Quality Parts,Customers Priority,Honest Operation,and Considerate Service”,our business mainly focus on the distribution of electronic components. Line cards we deal with include Microchip,ALPS,ROHM,Xilinx,Pulse,ON,Everlight and Freescale. Main products comprise IC,Modules,Potentiometer,IC Socket,Relay,Connector.Our parts cover such applications as commercial,industrial, and automotives areas.

We are looking forward to setting up business relationship with you and hope to provide you with the best service and solution. Let us make a better world for our industry!



## Contact us

Tel: +86-755-8981 8866 Fax: +86-755-8427 6832

Email & Skype: info@chipsmall.com Web: www.chipsmall.com

Address: A1208, Overseas Decoration Building, #122 Zhenhua RD., Futian, Shenzhen, China



PART NAME

TURNKEY CABINET

PART No.

DC-8078

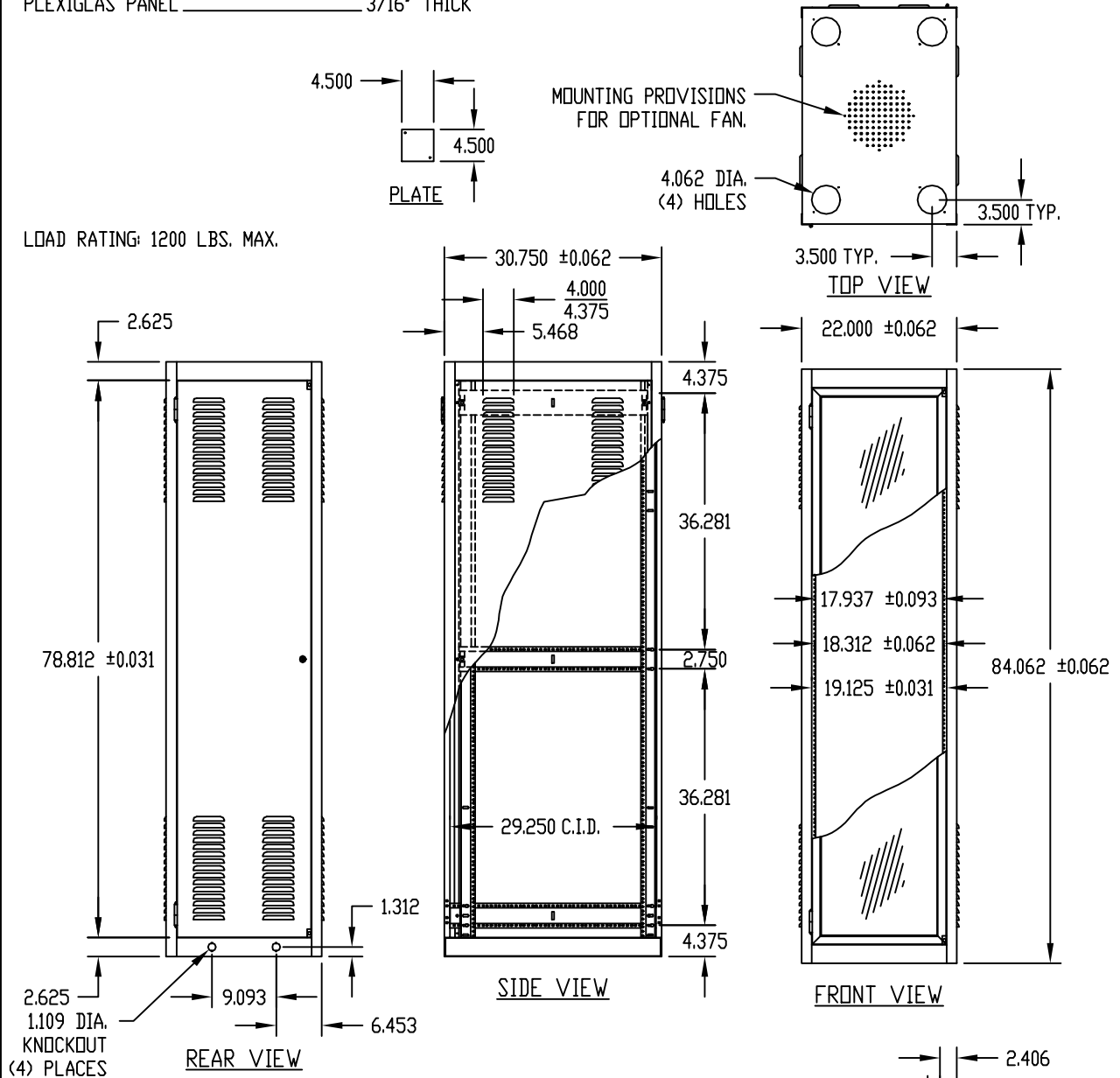
**MATERIAL:**

SIDES & REAR DOOR \_\_\_\_\_ 20 GA. STEEL  
 REAR DOOR STIFFENER \_\_\_\_\_ 18 GA. STEEL  
 TOP, BOTTOM, RAIL SUPPORTS, PLATES  
 & DOOR STOPS \_\_\_\_\_ 16 GA. STEEL  
 VERTICAL RAILS \_\_\_\_\_ 14 GA. STEEL  
 PANEL MOUNTING RAILS  
 & LEVELER MOUNTING BRACKETS \_\_\_\_\_ 12 GA. STEEL  
 PLEXIGLAS DOOR FRAME \_\_\_\_\_ ALUMINUM EXTRUSION  
 PLEXIGLAS PANEL \_\_\_\_\_ 3/16" THICK

**FINISH:**

FRAME ASSEMBLY, SIDES, PLATES,  
 REAR DOOR & REAR DOOR HINGES \_\_\_\_\_ WHITE TEXTURE  
 \_\_\_\_\_ BLACK TEXTURE  
 \_\_\_\_\_ METALLIC GRAY  
 PLEXIGLAS DOOR HINGES \_\_\_\_\_  
 PANEL MOUNTING RAILS, DOOR STOPS  
 & LEVELER MOUNTING BRACKETS \_\_\_\_\_ SMOOTH BLACK  
 PLEXIGLAS DOOR FRAME \_\_\_\_\_ CLEAR ANODIZED  
 PLEXIGLAS PANEL \_\_\_\_\_ SMOKE GRAY

LOAD RATING: 1200 LBS. MAX.



**NOTES:**

- ① PANEL MOUNTING RAILS TAPPED #10-32 ON E.I.A. UNIVERSAL SPACING AND ARE FULLY ADJUSTABLE.
- ② MOUNTING HOLES PIERCED IN BASE FOR #RL-7770 LEVELER KIT. LEVELER KIT WILL RAISE CABINET RACK APPROXIMATELY 1.188 INCHES OFF THE FLOOR.
- ③ LEVELER KIT TO BE SHIPPED UNASSEMBLED, PACKED INSIDE RACK.
- ④ SIDES SHIPPED ASSEMBLED WITH TEMPORARY NYLON PUSH FASTENERS. CUSTOMER TO DO FINAL ASSEMBLY WITH #7346 SCREWS AND #295 NUT RETAINERS PROVIDED IN HARDWARE.

9.561 SQUARE CUTOUT

