



Chipsmall Limited consists of a professional team with an average of over 10 year of expertise in the distribution of electronic components. Based in Hongkong, we have already established firm and mutual-benefit business relationships with customers from,Europe,America and south Asia,supplying obsolete and hard-to-find components to meet their specific needs.

With the principle of “Quality Parts,Customers Priority,Honest Operation,and Considerate Service”,our business mainly focus on the distribution of electronic components. Line cards we deal with include Microchip,ALPS,ROHM,Xilinx,Pulse,ON,Everlight and Freescale. Main products comprise IC,Modules,Potentiometer,IC Socket,Relay,Connector.Our parts cover such applications as commercial,industrial, and automotives areas.

We are looking forward to setting up business relationship with you and hope to provide you with the best service and solution. Let us make a better world for our industry!



## Contact us

Tel: +86-755-8981 8866 Fax: +86-755-8427 6832

Email & Skype: info@chipsmall.com Web: www.chipsmall.com

Address: A1208, Overseas Decoration Building, #122 Zhenhua RD., Futian, Shenzhen, China



## SOC MPEG Codec Evaluation Kits

### Product Description

SOC provides evaluation kits for evaluating the MPEG codec IP cores, modules, and chipsets. The evaluation kits can also be used as product development platforms. The kits include: FMC-MCM-1000, VTR-1000, VTR-2000, and VTR-4000

For evaluation, SOC pre-loads the firmware and I/O drivers for the evaluation kits and makes them plug-and-play before shipping, which make it very easy for the users to test the SOC MPEG IP cores, codec modules, or chipsets.

For product development uses, customers can license the firmware and I/O drivers, in netlist IP cores (such as the network stack) or I/O driver source codes, which allows the users to integrate the IPs into their products.

The design files of FMC-MCM-1000 and VTR-1000/2000/4000 boards are also available with a fee, which can significantly accelerate the user product design process.

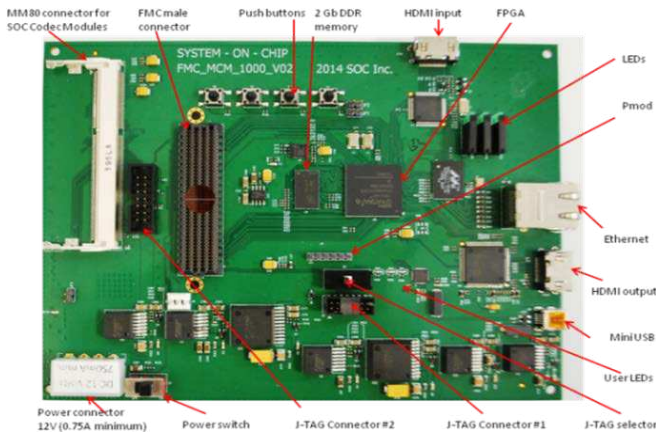
### FMC-MCM-1000 Key Features

- Xilinx /LX150/LX100/LX75/LX45 FPGA
- 2 GB DDR3 RAM
- FMC male and female connectors
- SODIMM connector for SOC MPEG Codec Modules
- HDMI input and output
- Ethernet

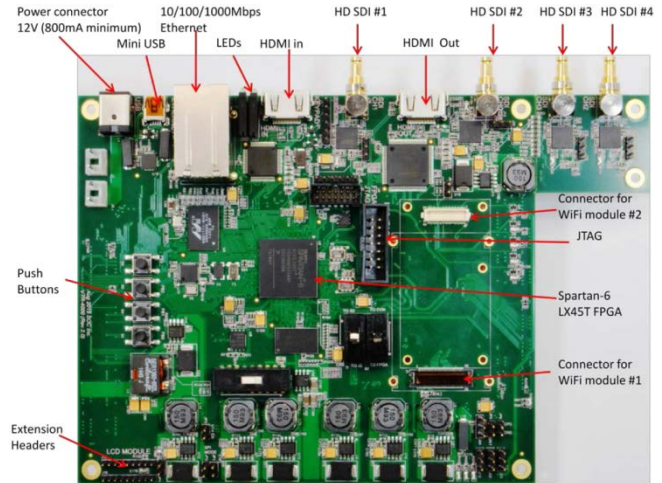
### VTR-1000/2000/4000 Key Features

- Xilinx LX45T FPGA
- 2 GB DDR3 RAM
- Tow connectors for SOC MPEG Codec Modules
- HDMI input and output
- 3G HD-SDI inputs and outputs
- Ethernet

FMC-MCM-1000 Top View



VTR-4000 Bottom View



FMC-MCM-1000 Bottom View

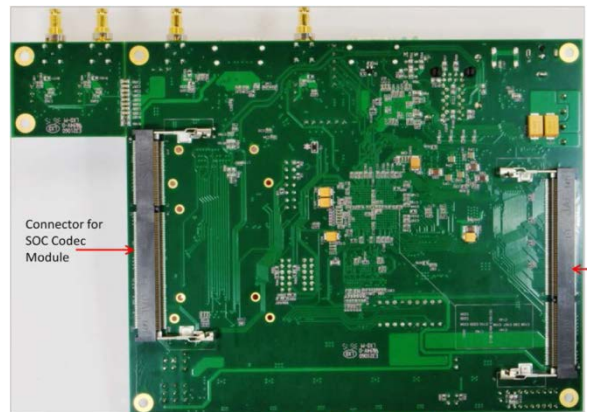
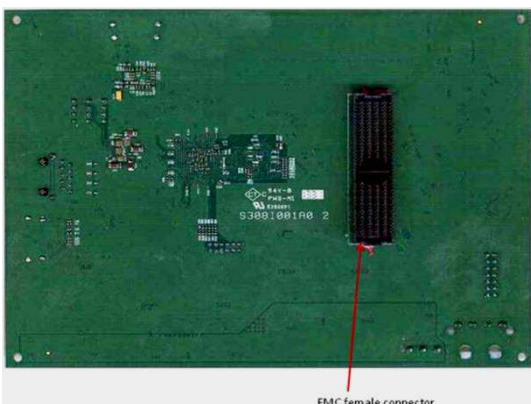


Fig. 2 VTR-4000 bottom View