



Chipsmall Limited consists of a professional team with an average of over 10 year of expertise in the distribution of electronic components. Based in Hongkong, we have already established firm and mutual-benefit business relationships with customers from,Europe,America and south Asia,supplying obsolete and hard-to-find components to meet their specific needs.

With the principle of “Quality Parts,Customers Priority,Honest Operation,and Considerate Service”,our business mainly focus on the distribution of electronic components. Line cards we deal with include Microchip,ALPS,ROHM,Xilinx,Pulse,ON,Everlight and Freescale. Main products comprise IC,Modules,Potentiometer,IC Socket,Relay,Connector.Our parts cover such applications as commercial,industrial, and automotives areas.

We are looking forward to setting up business relationship with you and hope to provide you with the best service and solution. Let us make a better world for our industry!



Contact us

Tel: +86-755-8981 8866 Fax: +86-755-8427 6832

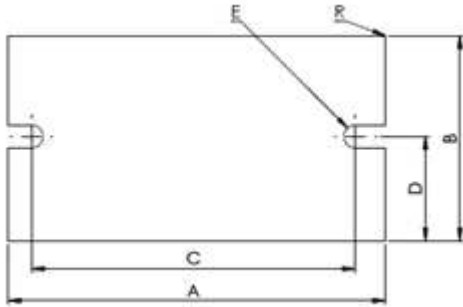
Email & Skype: info@chipsmall.com Web: www.chipsmall.com

Address: A1208, Overseas Decoration Building, #122 Zhenhua RD., Futian, Shenzhen, China



DC0038/01/PC99-0.06

Die Cut PCM Relay Pad



Features

Low thermal resistance
Natural tack

Applications

Relay Pad

Properties

- REACH Compliant
- RoHS Compliant

Property	PC99	Unit	Tolerance	Test Method
Colour	Yellow	-	-	Visual
Thickness	0.06	mm	-	ASTM D374
Phase Change Softening Point	52	°C	-	-
Specific Gravity	2.35	g/cm ³	±0.2	ASTM D792
Working Temperature	-40 to 200	°C	-	-
Surface Resistance	>10 ¹²	Ohm-cm	-	ASTM D257
Elongation	5	%	±13	ASTM D412
Tensile Strength	0.1	Kgf/cm ²	-	ASTM D412
Standard Shape	-	Sheets 320-320mm	-	-
Thermal Resistance 30psi	0.1	°c-cm ² /w	-	-

Dimensions / mm							Ordering part number
A	B	C	D	E	F	G	
55.9	16.3	48.30	8.1	4			DC0038/01 - XXX - T
57.2	44.5	47.50	22.3	4.4			DC0038/02 - XXX - T
63.50	31.8	48.3	16	5.2			DC0038/03 - XXX - T
70.1	27	60	13.5	5.6			DC0038/04 - XXX - T
80	29	68	14.5	6.4			DC0038/05 - XXX - T
80	39.9	66	20.1	6.4			DC0038/06 - XXX - T
87.9	39.1	76	20	5.2			DC0038/07 - XXX - T