



Chipsmall Limited consists of a professional team with an average of over 10 year of expertise in the distribution of electronic components. Based in Hongkong, we have already established firm and mutual-benefit business relationships with customers from,Europe,America and south Asia,supplying obsolete and hard-to-find components to meet their specific needs.

With the principle of “Quality Parts,Customers Priority,Honest Operation,and Considerate Service”,our business mainly focus on the distribution of electronic components. Line cards we deal with include Microchip,ALPS,ROHM,Xilinx,Pulse,ON,Everlight and Freescale. Main products comprise IC,Modules,Potentiometer,IC Socket,Relay,Connector.Our parts cover such applications as commercial,industrial, and automotives areas.

We are looking forward to setting up business relationship with you and hope to provide you with the best service and solution. Let us make a better world for our industry!



## Contact us

Tel: +86-755-8981 8866 Fax: +86-755-8427 6832

Email & Skype: info@chipsmall.com Web: www.chipsmall.com

Address: A1208, Overseas Decoration Building, #122 Zhenhua RD., Futian, Shenzhen, China



# QUICK START GUIDE FOR DEMONSTRATION CIRCUIT 1278

## 6-CHANNEL, 14-BIT, 1.5MSPS SIMULTANEOUS SAMPLING ADC

---

LTC2351-14

### DESCRIPTION

Demonstration circuit 1278 features the LTC2351-14 6-channel, 14-Bit, simultaneous sampling ADC. Total throughput is 1.5MSPS; 250KSPS per channel, with a typical channel-to-channel aperture skew of 200ps. The board is designed to be used with the DC890B Fast DAACS data collection board to show the AC performance of the LTC2351-14. Alternatively, the

board can be directly connected to an application to evaluate the ADC's performance.

**Design files for this circuit board are available. Call the LTC factory.**

---

LTC is a trademark of Linear Technology Corporation

### QUICK START PROCEDURE

#### BASIC CONNECTIONS

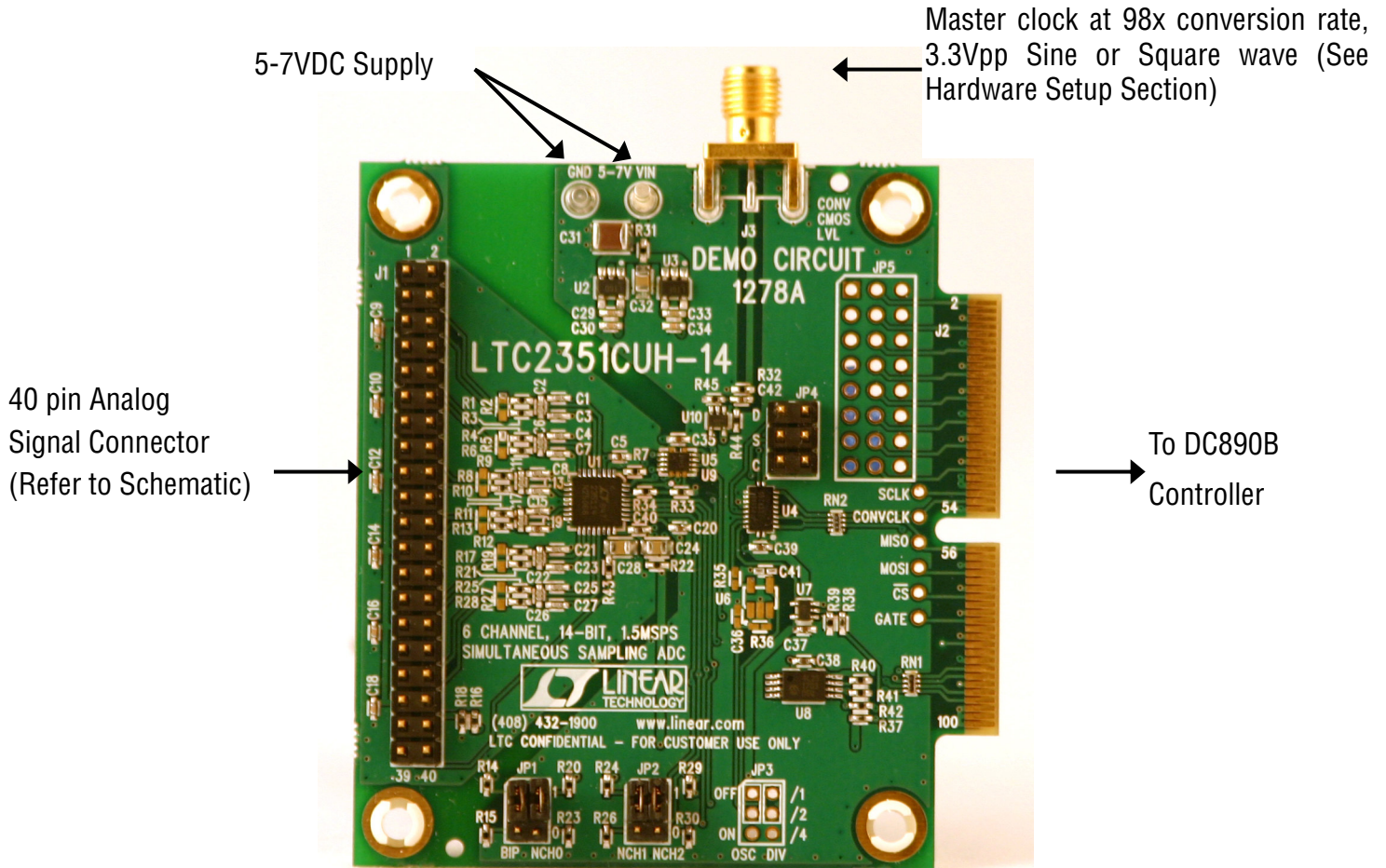
Connect DC1278 to a DC890B USB High Speed Data Collection Board using connector J2. Connect DC890B to a host PC with a standard USB A/B cable. Apply 5-7V DC to the VIN and GND terminals. Apply a 25MHz 3.3Vp-p sine wave or square wave to connec-

tor J3. Note that J3 has a 50 ohm termination resistor to ground. CH0-CH5 are provided through connector J1 (See schematic for details.). Run the QuickEval II (Pscope.exe) evaluation software supplied with DC890 or download it from [www.linear.com/software](http://www.linear.com/software).

# QUICK START GUIDE FOR DEMONSTRATION CIRCUIT 1278

## 6-CHANNEL, 14-BIT, 1.5MSPS SIMULTANEOUS SAMPLING ADC

Figure 1. CONNECTION DIAGRAM



# QUICK START GUIDE FOR DEMONSTRATION CIRCUIT 1278

## 6-CHANNEL, 14-BIT, 1.5MSPS SIMULTANEOUS SAMPLING ADC

Figure 2. SOFTWARE SCREENSHOT

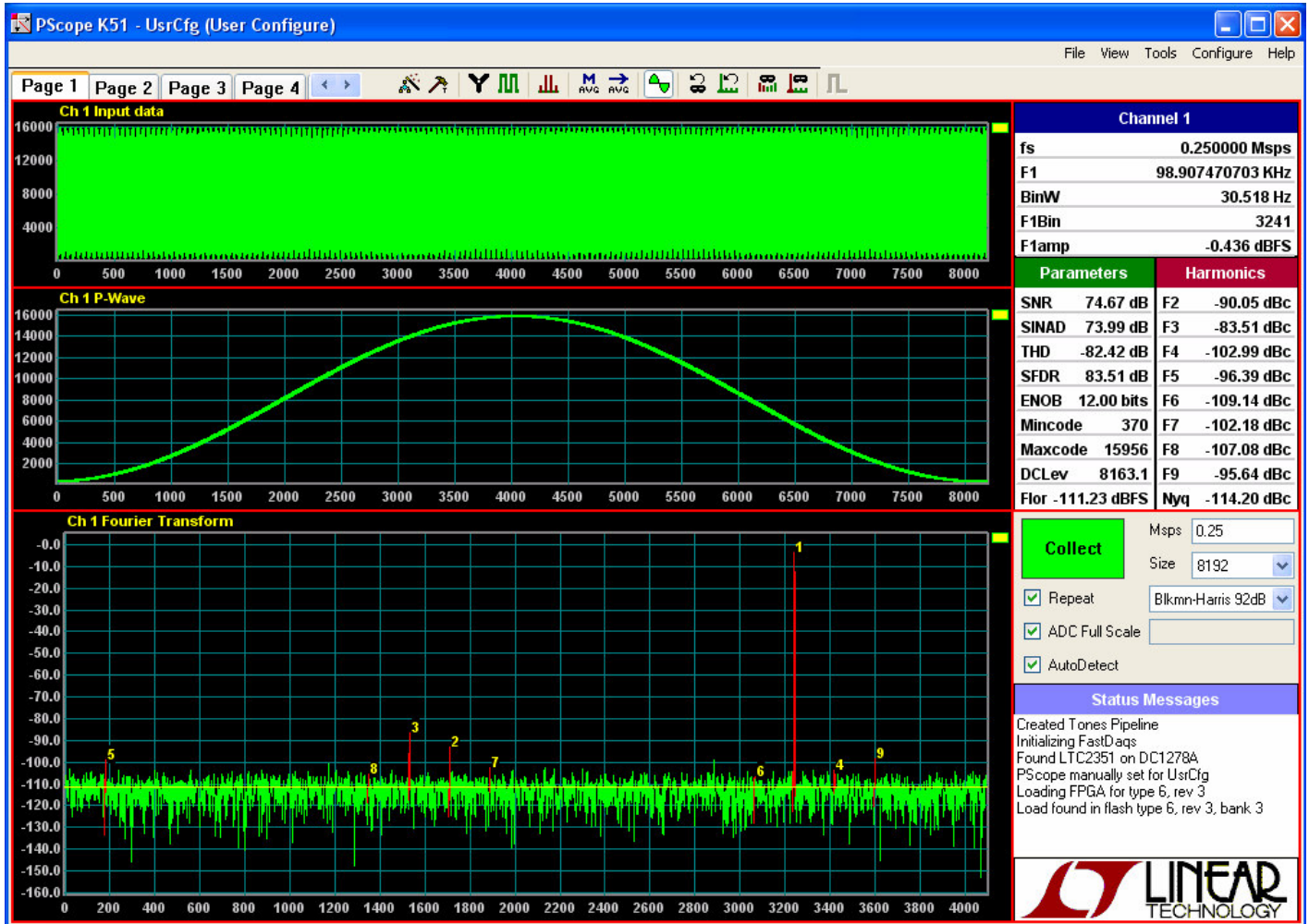
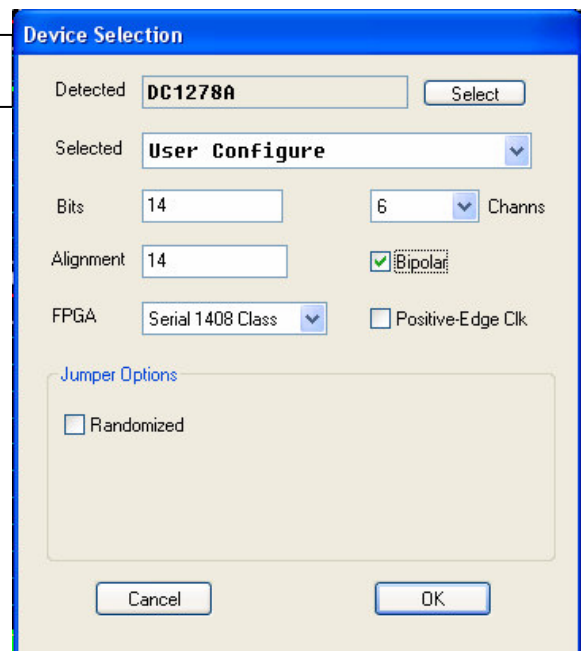
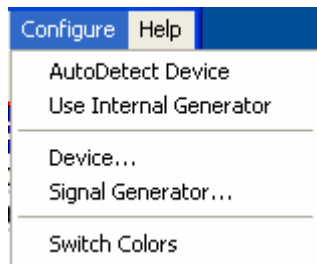


Figure 3. CONFIGURE MENUS



## SOFTWARE CONFIGURATION

### CONFIGURE DEVICE

The Pscope software should automatically configure itself after detecting the demo board. To change from Bipolar to Unipolar mode it will be necessary to manually configure the software. In the CONFIGURE menu (See Figure 3) select Device, which will bring up another window. In this window, select User Configure and adjust the other settings as follows:

Bits: 14

Alignment: 14

Bipolar: Checked if BIP jumper is set high, Un-Checked if BIP jumper is set to low. (Default is checked)

Channels: 6

Positive Edge Clk: UN-Checked

FPGA: Serial 1408 Class.

### CONFIGURE SOFTWARE SCREEN

The software interface is highly configurable and displays any combination of time domain data, frequency domain data, primitive wave and performance parameters (SNR, THD, SINAD, etc.). The screen can be broken into multiple panes as shown in Figure 2. Complete documentation on configuring PSCOPE can be found in the help file.

Click the COLLECT button to begin acquiring data.

Complete software documentation is available from the Help menu item, as features may be added periodically.

## HARDWARE SET-UP

### JUMPERS

**JP1, JP2** - Select number of channels to convert and Unipolar / Bipolar selection. NCH2, NCH1, NCH0 are set to 111 which selects all six channels. These switches should be left in this position when running Pscope software. UNI/BIP selection applies to all channels. Refer to Figure 4.

**JP3** - Enable Oscillator and Oscillator Division. Presently not used. This may be used in the future as serial clock, to allow a convert signal at 1X the conversion rate.

**JP4** - Digital Interface Header. Provides direct connection to the LTC2351-14 CONV, SDO, and SCK pins. This can be used to either monitor signals with a logic analyzer or to drive the LTC2351-14 directly from the customer's test equipment or prototype circuitry. DC890B should be disconnected before driving the LTC2351-14 externally with JP4. Note that R34 should be removed if the CONV signal is being driven externally.

**JP5** - Currently not used

### SIGNAL CONNECTIONS

**J1** - 40 pin connector with CH0-CH5 differential inputs, multiple grounds, a mid-supply bias voltage and Vref. Refer to schematic for pin out. The mid-supply bias voltage can be used to bias the minus ADC inputs for bipolar conversions.

**J2** - Data connections to DC890B collection board.

**J3** - Conversion Clock Input. This input has a 50 ohm termination resistor, and is intended to be driven by a 3.3Vpp sine or square wave. This clock is divided by 98 in the DC890B collection board to control the serial interface and convert pulse. To run the LTC2351-14 at maximum conversion rate, apply a 25MHz signal to this input.

### GROUNDING AND POWER CONNECTION

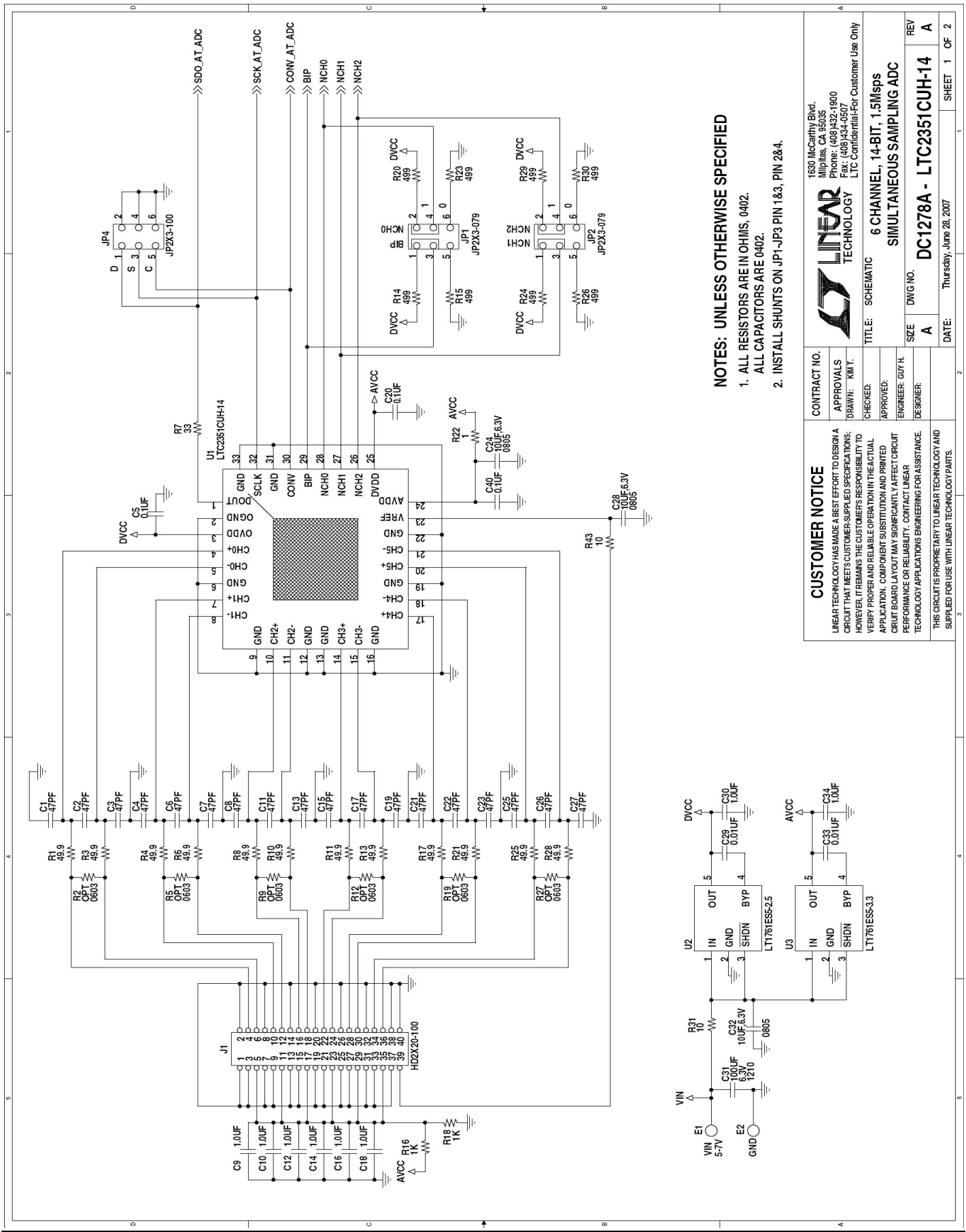
Connect a 5V to 7V power supply to the Vin and GND turret posts. For optimum performance, this supply should be floating with respect to any signal generators connected to the analog inputs.

Figure 4 – JP1, JP2 CONFIGURATION



# QUICK START GUIDE FOR DEMONSTRATION CIRCUIT 1278

## 6-CHANNEL, 14-BIT, 1.5MSPS SIMULTANEOUS SAMPLING ADC



**NOTES: UNLESS OTHERWISE SPECIFIED**

1. ALL RESISTORS ARE IN OHMS, 0402.
2. ALL CAPACITORS ARE 0402.
3. INSTALL SHUNTS ON JP1-JP3 PIN 1&3, PIN 2&4.

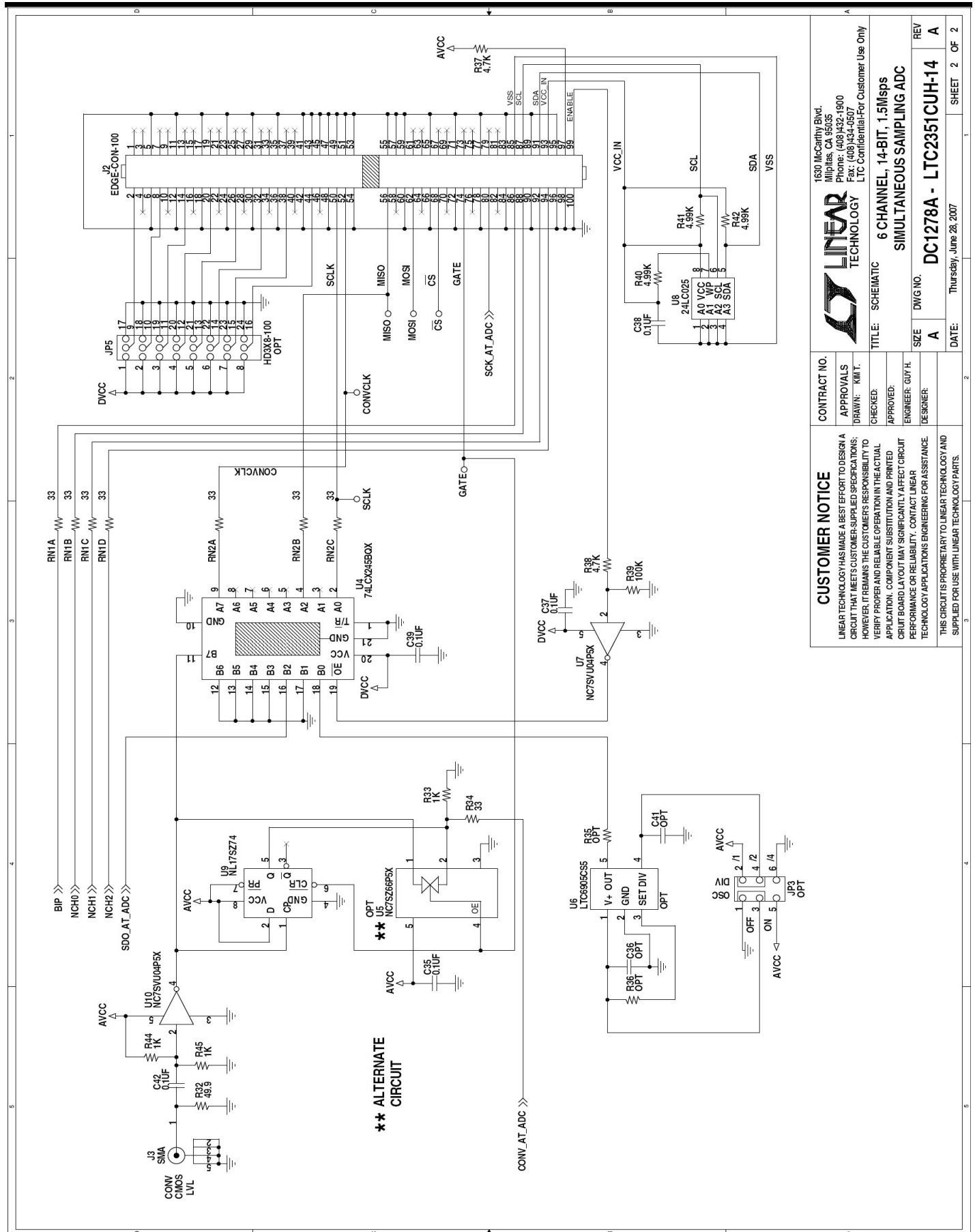
<b>CUSTOMER NOTICE</b> LINEAR TECHNOLOGY HAS MADE A BEST EFFORT TO DESIGN A CIRCUIT THAT MEETS CUSTOMER-SUPPLIED SPECIFICATIONS; HOWEVER, IT REMAINS THE CUSTOMER'S RESPONSIBILITY TO VERIFY PROPER AND RELIABLE OPERATION IN THE ACTUAL APPLICATION. COMPONENT SUBSTITUTION AND PRINTED CIRCUIT BOARD LAYOUT MAY SIGNIFICANTLY AFFECT CIRCUIT PERFORMANCE OR RELIABILITY. CONTACT LINEAR TECHNOLOGY APPLICATIONS ENGINEERING FOR ASSISTANCE. THIS CIRCUIT IS PROPRIETARY TO LINEAR TECHNOLOGY AND SUPPLIED FOR USE WITH LINEAR TECHNOLOGY PARTS.		<b>CONTRACT NO.</b>	
APPROVALS DRAWN: KMT		CHECKED:	
APPROVED:		ENGINEER: GUY H.	
DESIGNER:		TITLE: SCHEMATIC	
SIZE: A		DWG NO. DC1278A - LTC2351CUH-14	
DATE: Thursday, June 28, 2007		REV: A	
SHEET 1		OF 2	

**LINEAR TECHNOLOGY**  
1530 McCarthy Blvd.  
Milpitas, CA 95035  
Phone: (408) 432-1900  
Fax: (408) 434-0507  
LTC Confidential-For Customer Use Only

6 CHANNEL, 14-BIT, 1.5MSPS  
SIMULTANEOUS SAMPLING ADC

# QUICK START GUIDE FOR DEMONSTRATION CIRCUIT 1278

## 6-CHANNEL, 14-BIT, 1.5MSPS SIMULTANEOUS SAMPLING ADC



<b>CUSTOMER NOTICE</b>		CONTRACT NO.	
LINEAR TECHNOLOGY HAS MADE A BEST EFFORT TO DESIGN A CIRCUIT THAT MEETS CUSTOMER-SUPPLIED SPECIFICATIONS; HOWEVER, IT REMAINS THE CUSTOMER'S RESPONSIBILITY TO VERIFY PROPER AND RELIABLE OPERATION IN THE ACTUAL APPLICATION. COMPONENT SUBSTITUTION AND PRINTED CIRCUIT BOARD LAYOUT MAY SIGNIFICANTLY AFFECT CIRCUIT PERFORMANCE OR RELIABILITY. CONTACT LINEAR TECHNOLOGY APPLICATIONS ENGINEERING FOR ASSISTANCE.		APPROVALS	
THIS CIRCUIT IS PROPRIETARY TO LINEAR TECHNOLOGY AND SUPPLIED FOR USE WITH LINEAR TECHNOLOGY PARTS.		DRAWN: KMT	
		CHECKED:	
		APPROVED:	
		ENGINEER: GUY H.	
		DESIGNER:	
		TITLE: SCHEMATIC	
		6 CHANNEL, 14-BIT, 1.5MSPS	
		SIMULTANEOUS SAMPLING ADC	
SIZE	A	DWG NO.	DC1278A - LTC2351CUH-14
REV	A	DATE	Thursday, June 28, 2007
		SHEET 2 OF 2	

1630 McCarthy Blvd.  
Milpitas, CA 95035  
Phone: (408)432-1900  
Fax: (408)434-0507  
LTC Confidential-For Customer Use Only

**LINEAR TECHNOLOGY**