



Chipsmall Limited consists of a professional team with an average of over 10 year of expertise in the distribution of electronic components. Based in Hongkong, we have already established firm and mutual-benefit business relationships with customers from,Europe,America and south Asia,supplying obsolete and hard-to-find components to meet their specific needs.

With the principle of “Quality Parts,Customers Priority,Honest Operation,and Considerate Service”,our business mainly focus on the distribution of electronic components. Line cards we deal with include Microchip,ALPS,ROHM,Xilinx,Pulse,ON,Everlight and Freescale. Main products comprise IC,Modules,Potentiometer,IC Socket,Relay,Connector.Our parts cover such applications as commercial,industrial, and automotives areas.

We are looking forward to setting up business relationship with you and hope to provide you with the best service and solution. Let us make a better world for our industry!



Contact us

Tel: +86-755-8981 8866 Fax: +86-755-8427 6832

Email & Skype: info@chipsmall.com Web: www.chipsmall.com

Address: A1208, Overseas Decoration Building, #122 Zhenhua RD., Futian, Shenzhen, China



LTC2158-14, LTC2158-12,
 LTC2157-14, LTC2157-12,
 LTC2156-14, LTC2156-12,
 LTC2155-14, LTC2155-12
 12-Bit/14-Bit, 170Msps to
 310Msps Dual ADCs

DESCRIPTION

Demonstration circuit 1564A supports a family of 12-/14-bit 170Msps to 310Msps ADCs. Each assembly features one of the following devices: LTC[®]2158-14/LTC2158-12, LTC2157-14/LTC2157-12, LTC2156-14/LTC2156-12, LTC2155-14/LTC2155-12, high speed, dual ADCs.

The versions of the 1564A demo board are listed in Table 1. Depending on the required resolution and sample rate,

the DC1564 is supplied with the appropriate ADC. The circuitry on the analog inputs is optimized for analog input frequencies from 5MHz to 140MHz. Refer to the data sheet for proper input networks for different input frequencies.

Design files for this circuit board are available at <http://www.linear.com/demo>

LT, LT, LTC, LTM, Linear Technology and the Linear logo are registered trademarks and PScope is a trademark of Linear Technology Corporation. All other trademarks are the property of their respective owners.

Table 1. DC1564A Variants

| DC1564A VARIANTS | ADC PART NUMBER | RESOLUTION | MAXIMUM SAMPLE RATE | INPUT FREQUENCY |
|------------------|-----------------|------------|---------------------|-----------------|
| 1564A-A | LTC2157-14 | 14-Bit | 250Msps | 5MHz to 140MHz |
| 1564A-B | LTC2156-14 | 14-Bit | 210Msps | 5MHz to 140MHz |
| 1564A-C | LTC2155-14 | 14-Bit | 170Msps | 5MHz to 140MHz |
| 1564A-D | LTC2157-12 | 12-Bit | 250Msps | 5MHz to 140MHz |
| 1564A-E | LTC2156-12 | 12-Bit | 210Msps | 5MHz to 140MHz |
| 1564A-F | LTC2155-12 | 12-Bit | 170Msps | 5MHz to 140MHz |
| 1564A-G | LTC2158-14 | 14-Bit | 310Msps | 5MHz to 140MHz |
| 1564A-H | LTC2158-12 | 12-Bit | 310Msps | 5MHz to 140MHz |

PERFORMANCE SUMMARY (T_A = 25°C)

| PARAMETER | CONDITION | VALUE |
|--|--|---|
| Supply Voltage – DC1564A | Depending on Sampling Rate and the A/D Converter Provided, This Supply Must Provide Up to 500mA. | Optimized for 3.6V [3V ↔ 6.0V Min/Max] |
| Analog input range | Depending on SENSE Pin Voltage | 1.5V _{p-p} or 1.32V _{p-p} |
| Logic Input Voltages | Minimum Logic High | 1.3V |
| | Maximum Logic Low | 0.6V |
| Logic Output Voltages (Differential) | Nominal Logic Levels (100Ω Load, 3.5mA Mode) | 350mV/1.25V Common Mode |
| | Minimum Logic Levels (100Ω Load, 3.5mA Mode) | 247mV/1.25V Common Mode |
| Sampling Frequency (Convert Clock Frequency) | See Table 1 | |
| Encode Clock Level | Differential Encode Mode (ENC ⁻ Not Tied to GND) | 0.2V to 1.9V |
| Resolution | See Table 1 | |

dc1564afa

DEMO MANUAL DC1564A

PERFORMANCE SUMMARY (T_A = 25°C)

| | | |
|-----------------------|---------------------------|--|
| Input Frequency Range | See Table 1 | |
| SFDR | See Applicable Data Sheet | |
| SNR | See Applicable Data Sheet | |

QUICK START PROCEDURE

Demonstration circuit 1564A is easy to set up to evaluate the performance of the LTC2157 A/D converter family. Refer to Figure 1 for proper measurement equipment setup and follow the procedure below:

Setup

If a DC1371 Data Acquisition and Collection System was supplied with the DC1564A demonstration circuit, follow the DC1371 Quick Start Guide to install the required software and for connecting the DC1371 to the DC1564A and to a PC.

DC1564A Demonstration Circuit Board Jumpers

The DC1564A demonstration circuit board should have the following jumper settings as default positions: (as per Figure 1)

JP1 – PAR/SER: Selects Parallel or Serial Programming Mode. (Default: Serial)

Applying Power and Signals to the DC1564A Demonstration Circuit

The DC1371 is used to acquire data from the DC1564A, the DC1371 must **first** be connected to a powered USB port and have 5V applied power **before** applying 3.6V to

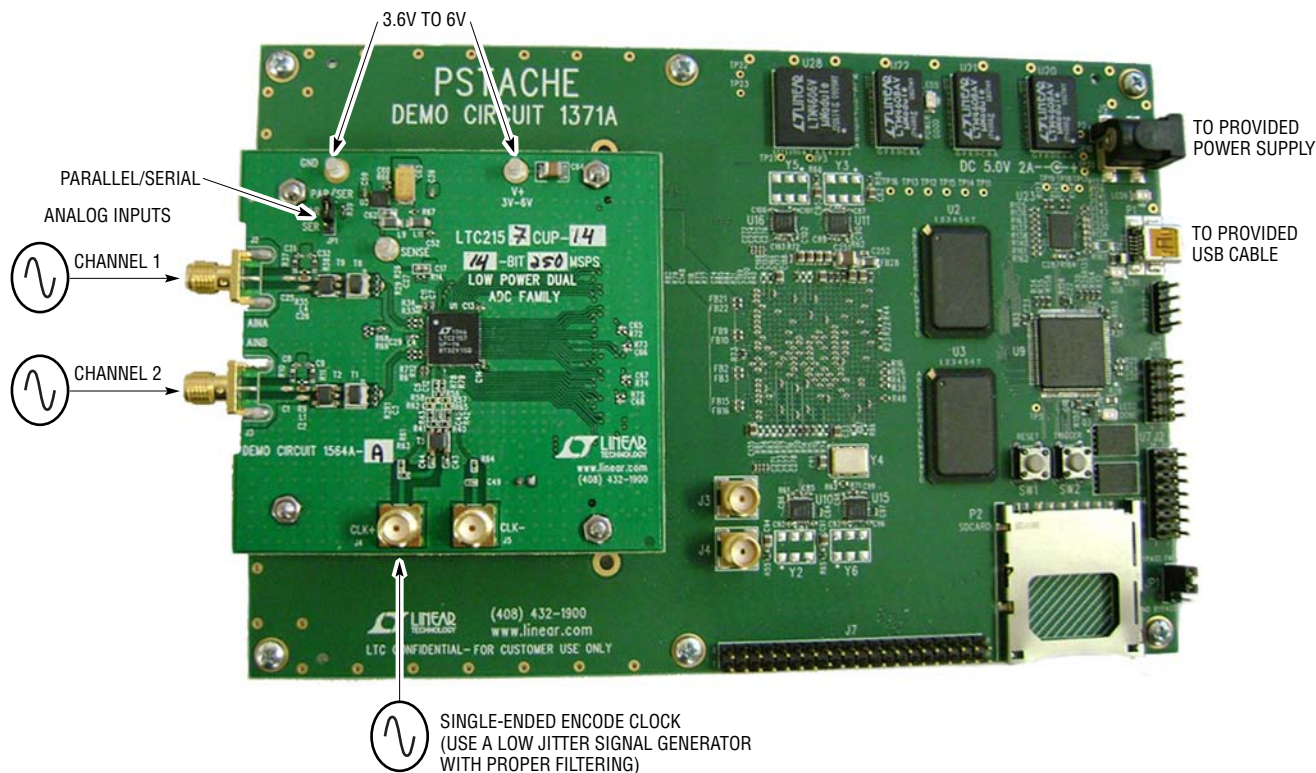


Figure 1. DC1564A Setup (Zoom for Detail)

dc1564afa

QUICK START PROCEDURE

6.0V across the pins marked V+ and GND on the DC1564A. The DC1564 requires 3.6V for proper operation.

Regulators on the board produce the voltages required for the ADC. The DC1564A demonstration circuit requires up to 500mA depending on the sampling rate and the A/D converter supplied.

The DC1564A should not be removed, or connected to the DC1371 while power is applied.

Analog Input Network

For optimal distortion and noise performance the RC network on the analog inputs may need to be optimized for different analog input frequencies. For input frequencies above 140MHz, refer to the respective ADC data sheet for a proper input network. Other input networks may be more appropriate for input frequencies less than 5MHz.

In almost all cases, filters will be required on both analog input and encode clock to provide data sheet SNR.

The filters should be located close to the inputs to avoid reflections from impedance discontinuities at the driven end of a long transmission line. Most filters do not present 50Ω outside the passband. In some cases, 3dB to 10dB pads may be required to obtain low distortion.

If your generator cannot deliver full-scale signals without distortion, you may benefit from a medium power amplifier based on a Gallium Arsenide Gain block prior to the final filter. This is particularly true at higher frequencies where IC-based operational amplifiers may be unable to deliver the combination of low noise figure and high IP3 point required. A high order filter can be used prior to this final amplifier, and a relatively lower Q filter used between the amplifier and the demo circuit.

Apply the analog input signal of interest to the SMA connectors on the DC1564A demonstration circuit board marked J2 AINA and J3 AINB. These inputs correspond with channels one and two of the ADC respectively. These inputs are capacitively coupled to Balun transformers ETC1-1-13 (lead free part number: MABA007159-000000).

Encode Clock

Note: Apply an encode clock to the SMA connector on the DC1564A demonstration circuit board marked J4 CLK+. As a default the DC1564A is populated to have a single-ended input.

For the best noise performance, the encode input must be driven with a very low jitter, sine wave source. The amplitude should be large, up to 3V_{P-P} or 13dBm.

Using bandpass filters on the clock and the analog input will improve the noise performance by reducing the wideband noise power of the signals. Data sheet FFT plots are taken with 10-pole LC filters made by TTE (Los Angeles, CA) to suppress signal generator harmonics, non-harmonically related spurs and broadband noise. Low phase noise Agilent 8644B generators are used for both the clock input and the analog input.

Digital Outputs

The data outputs, data clock, and frame clock signals are available on J1 of the DC1564A. This connector follows the VITA-57/FMC standard, but all signals should be verified when using an FMC carrier card other than the DC1371.

Software

The DC1371 is controlled by the PScope™ system software provided or downloaded from the Linear Technology website at <http://www.linear.com/software/>.

To start the data collection software, if PScope.exe is installed (by default) in \Program Files\LTC\PScope\, double click the PScope icon or bring up the run window under the start menu and browse to the PScope directory and select PScope.

If the DC1564A demonstration circuit is properly connected to the DC1371, PScope should automatically detect the DC1564A, and configure itself accordingly.

If everything is hooked up properly, powered, and a suitable convert clock is present, clicking the Collect button will result in time and frequency plots displayed in the PScope window. Additional information and help for PScope is available in the DC1371 Quick Start Guide and in the online help available within the PScope program itself.

QUICK START PROCEDURE

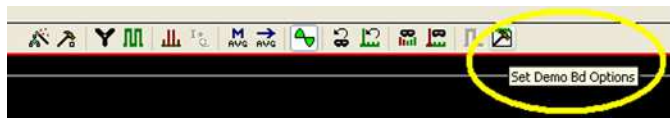


Figure 2. PScope Toolbar

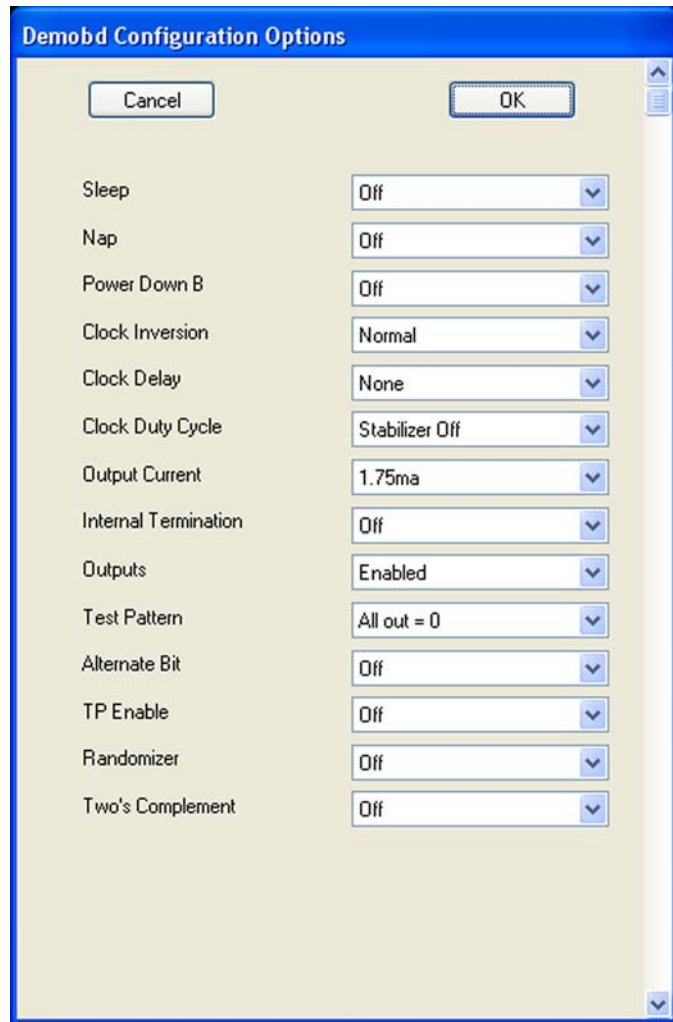


Figure 3. Demobd Configuration Options

Serial Programming

PScope has the ability to program the DC1564A board serially through the DC1371. There are several options available in the LTC2158 family that are only available through serially programming. PScope allows all of these features to be tested.

These options are available by first clicking on the Set Demo Bd Options icon on the PScope toolbar (Figure 2).

This will bring up the menu shown in Figure 3.

This menu allows any of the options available for the LTC2158 family to be programmed serially. The LTC2158 family has the following options:

Sleep Mode – Selects between normal operation, sleep mode:

- Off (Default) – Entire ADC is powered and active
- On – The entire ADC is powered down

NAP – Selects between normal operation and nap mode.

- Off (Default) – Channel one is active
- On – Channel one is in nap mode

Power Down B – Selects between normal operation and putting channel B in nap mode.

- Off (Default) – Channel two is active
- On – Channel two is in nap mode

Clock Inversion – Selects the polarity of the CLKOUT signal:

- Normal (Default) – Normal CLKOUT polarity
- Inverted – CLKOUT polarity is inverted

Clock Delay – Selects the phase delay of the CLKOUT signal:

- None (Default) – No CLKOUT delay
- 45 deg – CLKOUT delayed by 45 degrees
- 90 deg – CLKOUT delayed by 90 degrees
- 135 deg – CLKOUT delayed by 135 degrees

Clock Duty Cycle – Enable or disables duty cycle stabilizer.

- Stabilizer off (Default) – Duty cycle stabilizer disabled
- Stabilizer on – Duty cycle stabilizer enabled

QUICK START PROCEDURE

Output Current – Selects the LVDS output drive current.

- 1.75mA (Default) – LVDS output driver current
- 2.1mA – LVDS output driver current
- 2.5mA – LVDS output driver current
- 3.0mA – LVDS output driver current
- 3.5mA – LVDS output driver current
- 4.0mA – LVDS output driver current
- 4.5mA – LVDS output driver current

Internal Termination – Enables LVDS internal termination.

- Off (Default) – Disables internal termination
- On – Enables internal termination

Outputs – Enables digital outputs

- Enabled (Default) – Enables digital outputs
- Disabled – Disables digital outputs

Test Pattern – Selects digital output test patterns.

- All out = 0 (default) – All digital outputs are 0
- All out = 1 – All digital outputs are 1
- Checkerboard – OF, and D13-D0 Alternate between 101 0101 1010 0101 and 010 1010 0101 1010 on alternating samples.
- Alternating – Digital outputs alternate between all 1's and all 0's on alternating samples

Alternate Bit – Alternate bit polarity mode.

- Off (Default) – Disables alternate bit polarity
- On – Enables alternate bit polarity (Before enabling ABP, be sure the part is in offset binary mode)

TP Enable – Selects Digital output test patterns. The desired test pattern can be entered into the text boxes provided.

- Off (default) – ADC input data is displayed
- On – Test pattern is displayed

Randomizer – Enables data output randomizer.

- Off (Default) – Disables data output randomizer
- On – Enables data output randomizer

Two's Complement – Enables two's complement mode.

- Off (Default) – Selects offset binary mode
- On – Selects two's complement mode

Once the desired settings are selected hit OK and PScope will automatically update the register of the device on the DC1564 demo board.

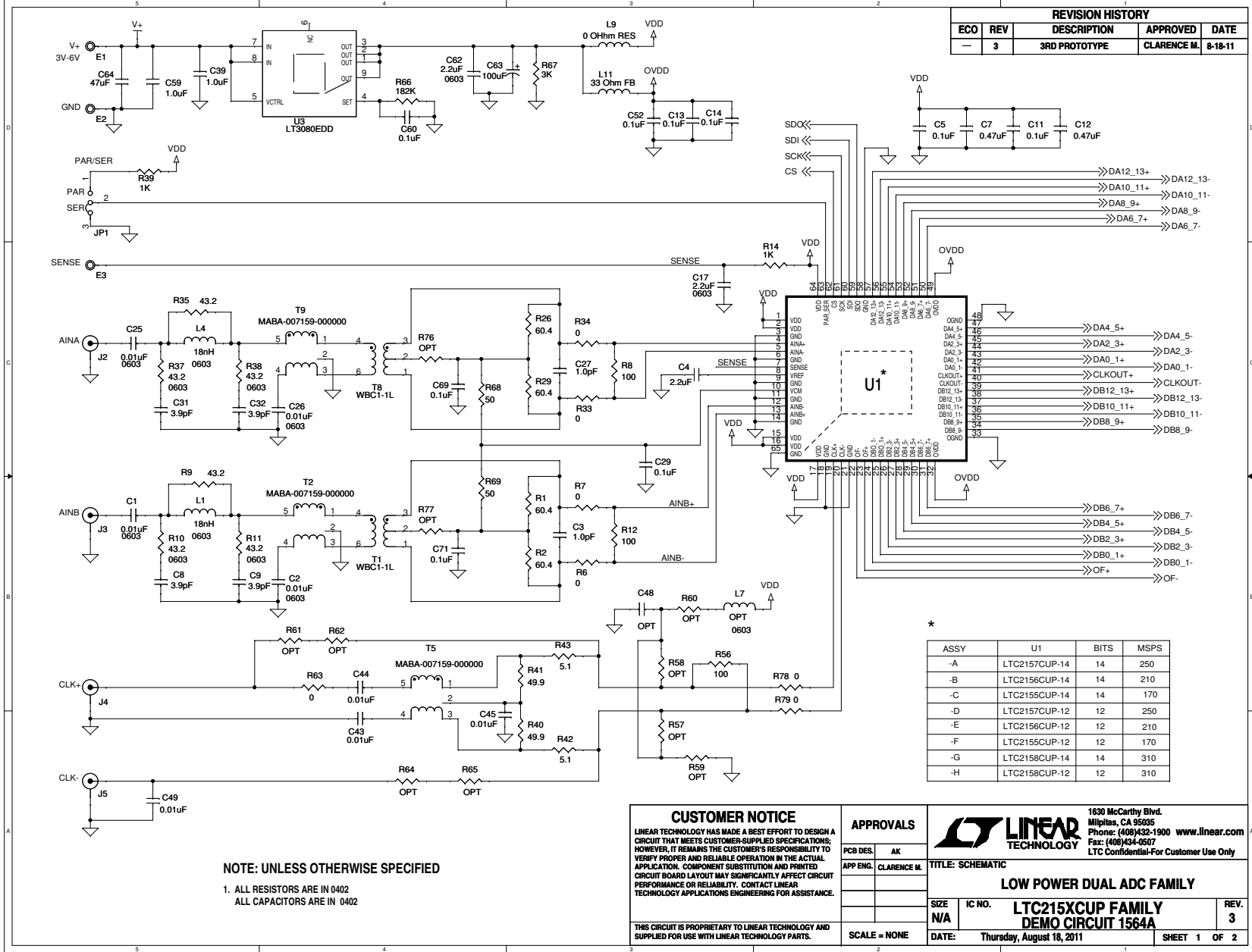
DEMO MANUAL DC1564A

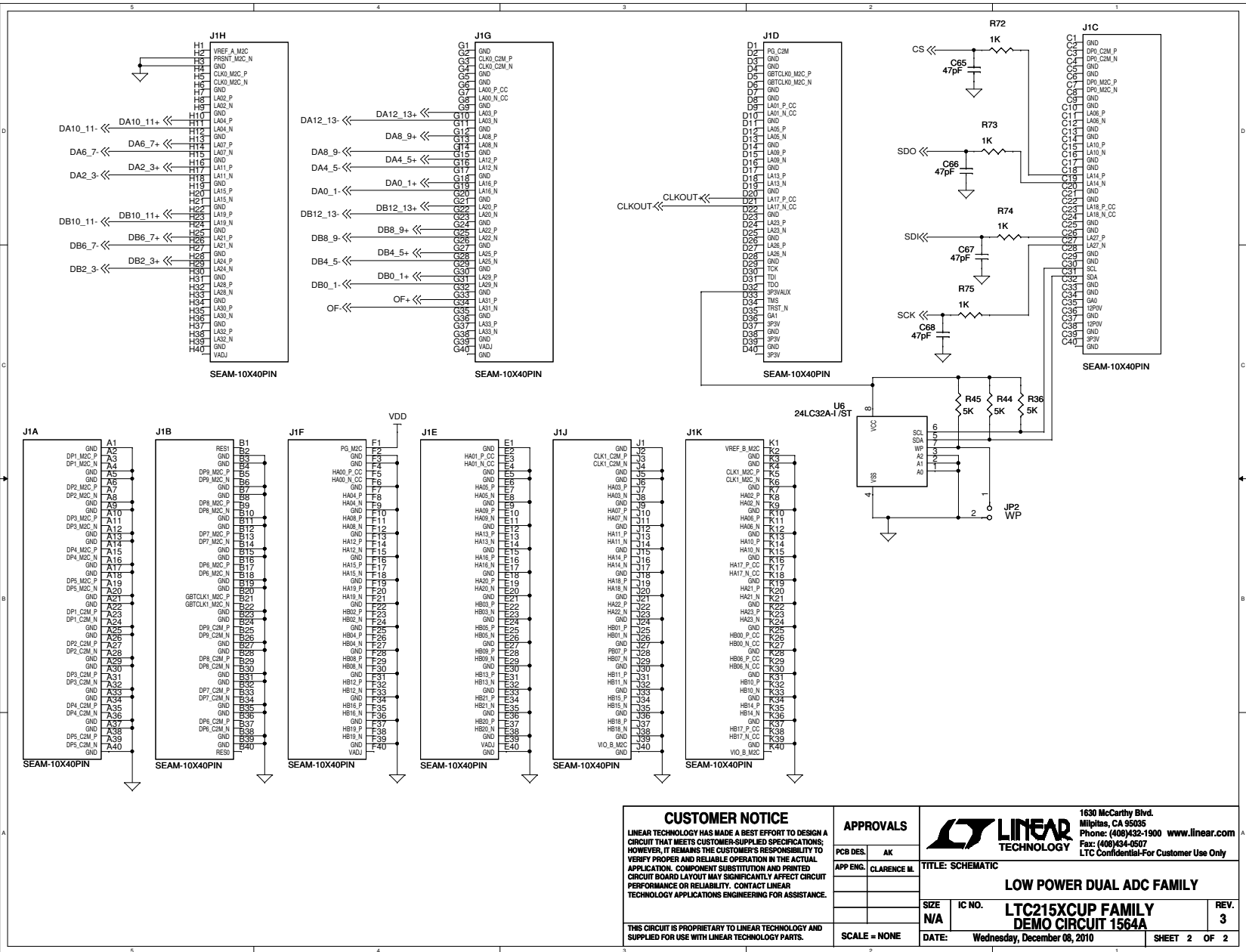
PARTS LIST

| ITEM | QTY | REFERENCE | PART DESCRIPTION | MANUFACTURER/PART NUMBER |
|---------------------------|-----|---|--|-----------------------------------|
| LTC215XCUPX Family | | | | |
| 1 | 4 | C1, C2, C25, C26 | CAP, X7R, 0.01 μ F, 50V, 10% 0603 | AVX, 06035C103KAQ2A |
| 2 | 2 | C3, C27 | CAP, COG, 1pF, 50V, 5% 0402 | AVX, 04025A1R0JAT2A |
| 3 | 11 | C4, C5, C7, C11, C12, C13, C14, C29, C52, C69, C71 | CAP, X5R, 0.1 μ F, 10V, 10% 0402 | AVX, 0402ZD104KAQ2A |
| 4 | 4 | C8, C9, C31, C32 | CAP, COG, 3.9pF, 50V, 5% 0402 | AVX, 04025A3R9JAT2A |
| 5 | 2 | C17, C62 | CAP, X5R, 2.2 μ F, 10V, 20% 0603 | AVX, 0603ZD225MAT2A |
| 6 | 3 | C39, C59, C60 | CAP, X5R, 1 μ F, 10V, 10% 0402 | AVX, 0402ZD105KAT2A |
| 7 | 4 | C43, C44, C45, C49 | CAP, X7R, 0.01 μ F, 16V, 10% 0402 | AVX, 0402YC103KAQ2A |
| 8 | 11 | C48, R57, R58, R59, R60, R61, R62, R64, R65, R76, R77 | OPT | 402 |
| 9 | 1 | C63 | CAP, TANT, 100 μ F, 10% 6032 | AVX, TAJW107K010R |
| 10 | 1 | C64 | CAP, X7R, 47 μ F, 10V, 10%, 1210 | MURATA, GRM32ER71A476KE15L |
| 11 | 4 | C65, C66, C67, C68 | CAP, COG, 47pF, 16V, 10% 0402 | AVX, 0402YA470KA |
| 12 | 3 | E1, E2, E3 | TESTPOINT, TURRET, 0.094" | MILL-MAX, 2501-2-00-80-00-00-07-0 |
| 13 | 1 | JP1 | 3-PIN 0.079" SINGLE ROW HEADER | SAMTEC, TMM103-02-L-S |
| 14 | 1 | JP2 | HEADER, 2-PIN 0.079" SINGLE ROW | SAMTEC, TMM-102-02-L-S |
| 15 | | | SHUNT, 0.079" CENTER | SAMTEC, 2SN-BK-G |
| 16 | 1 | J1 | BGA CONNECTOR, 40x10 | SAMTEC, SEAM-40-02.0-S-10-2-A |
| 17 | 1 | J1 | UNUSED | CON-SEAM-10X40PIN |
| 18 | 2 | J2, J3 | CON., SMA 50 Ω EDGE-LANCH | E.FJOHNSON, 142-0701-851 |
| 19 | 2 | J4, J5 | CON., SMA 50 Ω STRAIGHT MOUNT | CONNEX., 132134 |
| 20 | 2 | L1, L4 | INDUCTOR, 18nH 0603 | MURATA, LQP18MN18NG02D |
| 21 | 1 | L7 | OPT, 0603 | |
| 22 | 2 | L9, L11 | FERRITE BEAD, 1206 | MURATA, BLM31PG330SN1L |
| 23 | 4 | R1, R2, R26, R29 | RES., CHIP, 33.2 Ω , 1/16W, 1% 0402 | VISHAY, CRCW040233R2FKED |
| 24 | 4 | R6, R7, R33, R34 | RES., CHIP, 10 Ω , 1/16W, 5% 0402 | VISHAY, CRCW040210R0JNED |
| 25 | 3 | R8, R12, R56 | RES., CHIP, 100 Ω , 1/16W, 5% 0402 | VISHAY, CRCW0402100RJNED |
| 26 | 2 | R9, R35 | RES., CHIP, 43.2 Ω , 1/16W, 1% 0402 | VISHAY, CRCW040243R2FKED |
| 27 | 4 | R10, R11, R37, R38 | RES., CHIP, 43.2 Ω , 1/16W, 1% 0603 | VISHAY, CRCW060343R2FNEA |
| 28 | 6 | R14, R39, R72, R73, R74, R75 | RES., CHIP, 1k 1/16W, 1% 0402 | VISHAY, CRCW04021K00FKED |
| 29 | 3 | R36, R44, R45 | RES., CHIP, 5.1k 1/16W, 1%, 0402 | VISHAY, CRCW04025K10FKED |
| 30 | 2 | R40, R41 | RES., CHIP, 49.9 Ω , 1/16W, 1% 0402 | VISHAY, CRCW040249R9FKED |
| 31 | 2 | R42, R43 | RES., CHIP, 5.1 Ω , 1/16W, 5% 0402 | VISHAY, CRCW04025R10JNED |
| 32 | 3 | R63, R78, R79 | RES., CHIP, 0 Ω , 1/16W, 0402 | VISHAY, CRCW04020000Z0ED |
| 33 | 1 | R66 | RES., CHIP, 182k, 1/16W, 1% 0402 | VISHAY, CRCW0402182KFKED |
| 34 | 1 | R67 | RES., CHIP, 3.01k 1/16W, 1%, 0402 | VISHAY, CRCW04023K010FKED |
| 35 | 2 | R68, R69 | RES., CHIP, 49.9 Ω , 1/16W, 5% 0402 | VISHAY, CRCW040249R9JNED |
| 36 | 2 | T1, T8 | TRANSFORMER, WBC1-1L | COILCRAFT, WBC1-1L |
| 37 | 3 | T2, T5, T9 | TRANSFORMER, MABA-007159-000000 | M/A-COM, MABA-007159-000000 |
| 38 | 1 | U3 | I.C. LT3080EDD, DFN 3X3 | LINEAR TECH., LT3080EDD |
| 39 | 1 | U6 | I.C., Serial EEPROM TSSOP-8 | MICROCHIP, 24LC32A-I/ST |
| 40 | 4 | (STAND-OFF) | STAND-OFF, NYLON 0.25" | KEYSTONE, 8831(SNAP ON) |

PARTS LIST

| ITEM | QTY | REFERENCE | PART DESCRIPTION | MANUFACTURER/PART NUMBER |
|--------------------------------|-----|-----------|------------------------------------|--------------------------|
| LTC2157CUP-14/DC1564A-A | | | | |
| 1 | 1 | DC1564A | GENERAL BOM | |
| 2 | 1 | U1 | I.C. LTC2157CUP-14, 64-PIN QFN-9X9 | LINEAR, LTC2157CUP-14 |
| 3 | 1 | | FAB, PRINTED CIRCUIT BOARD | DEMO CIRCUIT 1564A |
| LTC2156CUP-14/DC1564A-B | | | | |
| 1 | 1 | DC1564A | GENERAL BOM | |
| 2 | 1 | U1 | I.C. LTC2156CUP-14, 64-PIN QFN-9X9 | LINEAR, LTC2156CUP-14 |
| 3 | 1 | | FAB, PRINTED CIRCUIT BOARD | DEMO CIRCUIT 1564A |
| LTC2155CUP-14/DC1564A-C | | | | |
| 1 | 1 | DC1564A | GENERAL BOM | |
| 2 | 1 | U1 | I.C. LTC2155CUP-14, 64-PIN QFN-9X9 | LINEAR, LTC2155CUP-14 |
| 3 | 1 | | FAB, PRINTED CIRCUIT BOARD | DEMO CIRCUIT 1564A |
| LTC2157CUP-12/DC1564A-D | | | | |
| 1 | 1 | DC1564A | GENERAL BOM | |
| 2 | 1 | U1 | I.C. LTC2157CUP-12, 64-PIN QFN-9X9 | LINEAR, LTC2157CUP-12 |
| 3 | 1 | | FAB, PRINTED CIRCUIT BOARD | DEMO CIRCUIT 1564A |
| LTC2156CUP-12/DC1564A-E | | | | |
| 1 | 1 | DC1564A | GENERAL BOM | |
| 2 | 1 | U1 | I.C. LTC2156CUP-12, 64-PIN QFN-9X9 | LINEAR, LTC2156CUP-12 |
| 3 | 1 | | FAB, PRINTED CIRCUIT BOARD | DEMO CIRCUIT 1564A |
| LTC2155CUP-12/DC1564A-F | | | | |
| 1 | 1 | DC1564A | GENERAL BOM | |
| 2 | 1 | U1 | I.C. LTC2155CUP-12, 64-PIN QFN-9X9 | LINEAR, LTC2157CUP-12 |
| 3 | 1 | | FAB, PRINTED CIRCUIT BOARD | DEMO CIRCUIT 1564A |
| LTC2158CUP-14/DC1564A-G | | | | |
| 1 | 1 | DC1564A-A | GENERAL BOM | |
| 2 | 1 | U1 | I.C. LTC2158CUP-14, 64-PIN QFN-9X9 | LINEAR, LTC2158CUP-14 |
| 3 | 1 | | FAB, PRINTED CIRCUIT BOARD | DEMO CIRCUIT 1564A |
| LTC2158CUP-12/DC1564A-H | | | | |
| 1 | 1 | DC1564A-A | GENERAL BOM | |
| 2 | 1 | U1 | I.C. LTC2158CUP-12, 64-PIN QFN-9X9 | LINEAR, LTC2158CUP-12 |
| 3 | 1 | | FAB, PRINTED CIRCUIT BOARD | DEMO CIRCUIT 1564A |





| | | | | | |
|--|--|---|--|--|-------------------------------|
| CUSTOMER NOTICE LINEAR TECHNOLOGY HAS MADE A BEST EFFORT TO DESIGN A CIRCUIT THAT MEETS CUSTOMER-SUPPLIED SPECIFICATIONS; HOWEVER, IT REMAINS THE CUSTOMER'S RESPONSIBILITY TO VERIFY PROPER AND RELIABLE OPERATION IN THE ACTUAL APPLICATION. COMPONENT SUBSTITUTION AND PRINTED CIRCUIT BOARD LAYOUT MAY SIGNIFICANTLY AFFECT CIRCUIT PERFORMANCE OR RELIABILITY. CONTACT LINEAR TECHNOLOGY APPLICATIONS ENGINEERING FOR ASSISTANCE. | | APPROVALS PCB DES. AK APP ENG. CLARENCE M. SCALE = NONE | | 1630 McCarthy Blvd. Milpitas, CA 95035 Phone: (408)432-1900 www.linear.com Fax: (408)434-6507 LTC Confidential-For Customer Use Only | |
| THIS CIRCUIT IS PROPRIETARY TO LINEAR TECHNOLOGY AND SUPPLIED FOR USE WITH LINEAR TECHNOLOGY PARTS. | | TITLE: SCHEMATIC LOW POWER DUAL ADC FAMILY LTC15XCUP FAMILY DEMO CIRCUIT 1564A | | SIZE N/A DATE: Wednesday, December 08, 2010 | IC NO. REV. 3 SHEET 2 OF 2 |

Information furnished by Linear Technology Corporation is believed to be accurate and reliable. However, no responsibility is assumed for its use. Linear Technology Corporation makes no representation that the interconnection of its circuits as described herein will not infringe on existing patent rights.

DEMO MANUAL DC1564A

DEMONSTRATION BOARD IMPORTANT NOTICE

Linear Technology Corporation (LTC) provides the enclosed product(s) under the following **AS IS** conditions:

This demonstration board (DEMO BOARD) kit being sold or provided by Linear Technology is intended for use for **ENGINEERING DEVELOPMENT OR EVALUATION PURPOSES ONLY** and is not provided by LTC for commercial use. As such, the DEMO BOARD herein may not be complete in terms of required design-, marketing-, and/or manufacturing-related protective considerations, including but not limited to product safety measures typically found in finished commercial goods. As a prototype, this product does not fall within the scope of the European Union directive on electromagnetic compatibility and therefore may or may not meet the technical requirements of the directive, or other regulations.

If this evaluation kit does not meet the specifications recited in the DEMO BOARD manual the kit may be returned within 30 days from the date of delivery for a full refund. **THE FOREGOING WARRANTY IS THE EXCLUSIVE WARRANTY MADE BY THE SELLER TO BUYER AND IS IN LIEU OF ALL OTHER WARRANTIES, EXPRESSED, IMPLIED, OR STATUTORY, INCLUDING ANY WARRANTY OF MERCHANTABILITY OR FITNESS FOR ANY PARTICULAR PURPOSE. EXCEPT TO THE EXTENT OF THIS INDEMNITY, NEITHER PARTY SHALL BE LIABLE TO THE OTHER FOR ANY INDIRECT, SPECIAL, INCIDENTAL, OR CONSEQUENTIAL DAMAGES.**

The user assumes all responsibility and liability for proper and safe handling of the goods. Further, the user releases LTC from all claims arising from the handling or use of the goods. Due to the open construction of the product, it is the user's responsibility to take any and all appropriate precautions with regard to electrostatic discharge. Also be aware that the products herein may not be regulatory compliant or agency certified (FCC, UL, CE, etc.).

No License is granted under any patent right or other intellectual property whatsoever. **LTC assumes no liability for applications assistance, customer product design, software performance, or infringement of patents or any other intellectual property rights of any kind.**

LTC currently services a variety of customers for products around the world, and therefore this transaction **is not exclusive**.

Please read the DEMO BOARD manual prior to handling the product. Persons handling this product must have electronics training and observe good laboratory practice standards. **Common sense is encouraged.**

This notice contains important safety information about temperatures and voltages. For further safety concerns, please contact a LTC application engineer.

Mailing Address:

Linear Technology
1630 McCarthy Blvd.
Milpitas, CA 95035

Copyright © 2004, Linear Technology Corporation