



Chipsmall Limited consists of a professional team with an average of over 10 year of expertise in the distribution of electronic components. Based in Hongkong, we have already established firm and mutual-benefit business relationships with customers from,Europe,America and south Asia,supplying obsolete and hard-to-find components to meet their specific needs.

With the principle of “Quality Parts,Customers Priority,Honest Operation,and Considerate Service”,our business mainly focus on the distribution of electronic components. Line cards we deal with include Microchip,ALPS,ROHM,Xilinx,Pulse,ON,Everlight and Freescale. Main products comprise IC,Modules,Potentiometer,IC Socket,Relay,Connector.Our parts cover such applications as commercial,industrial, and automotives areas.

We are looking forward to setting up business relationship with you and hope to provide you with the best service and solution. Let us make a better world for our industry!



Contact us

Tel: +86-755-8981 8866 Fax: +86-755-8427 6832

Email & Skype: info@chipsmall.com Web: www.chipsmall.com

Address: A1208, Overseas Decoration Building, #122 Zhenhua RD., Futian, Shenzhen, China



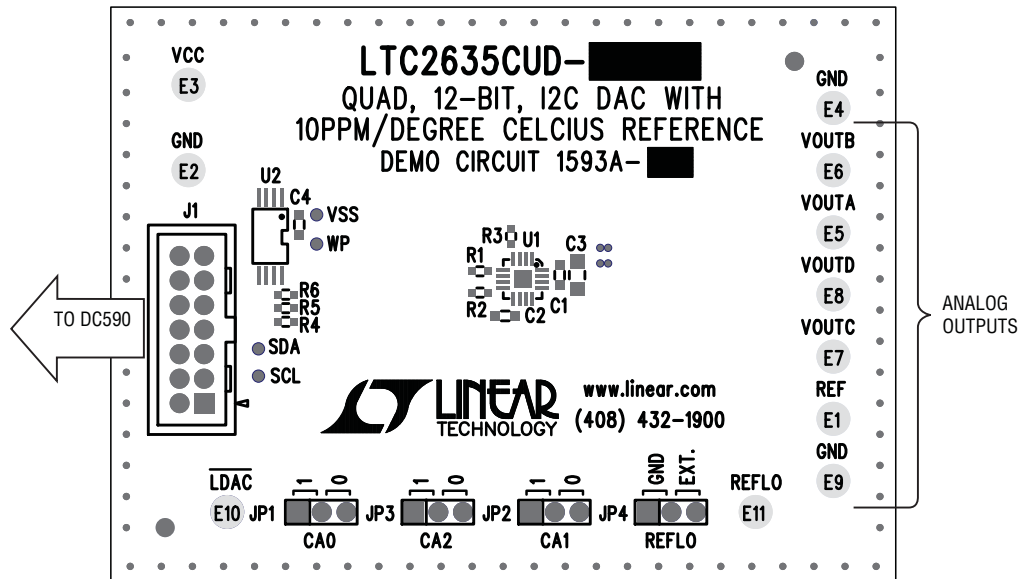
LTC2635: Quad 12-Bit I²C V_{OUT} DAC with Internal Reference

DESCRIPTION

Demonstration circuit DC1593A features the LTC2635 Quad 12-bit DAC. This device has an integrated, high accuracy, low-drift reference. It has a rail-to-rail output buffer and is guaranteed monotonic. This DAC communicates through a simple I²C compatible interface.

Design files for this circuit board are available. Call the LTC factory.

LT, LT, LTC, LTM, Linear Technology and the Linear logo are registered trademarks of Linear Technology Corporation. All other trademarks are the property of their respective owners.

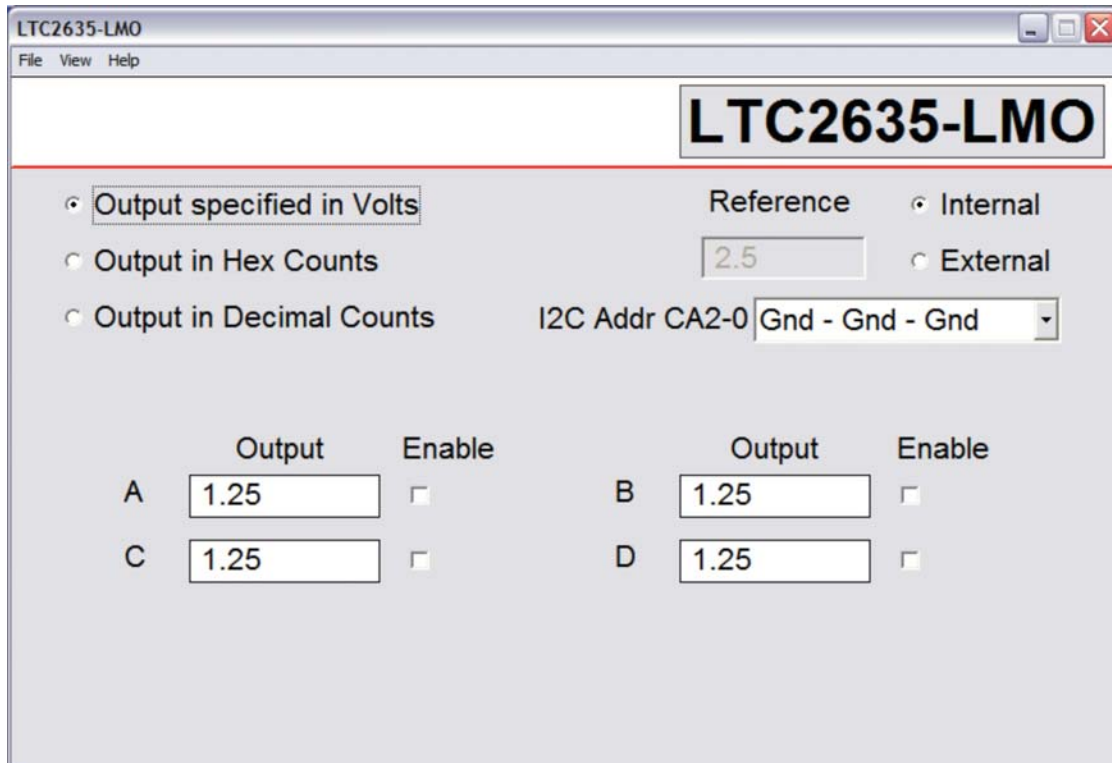


DEMOBOARD TYPE	LTC2635 VARIATION	POWER-UP	FULL SCALE (INT. REFERENCE MODE)
A	LMI	Mid-Scale	2.5V
B	LMO	High Impedance	2.5V
C	LZ	Zero	2.5V
D	HMI	Mid-Scale	4.096V
E	HZ	Zero	4.096V

QUICK START PROCEDURE

Connect DC1593A to a DC590 USB serial controller using the supplied 14 conductor ribbon cable. Connect DC590 to a host PC with a standard USB A/B cable. Run the evaluation software supplied with DC590 or download it

from www.linear.com. The correct control panel will be loaded automatically. Additional software documentation is available from the Help menu item, as features may be added periodically.



QUICK START PROCEDURE

HARDWARE SET-UP

Analog Connections

DAC outputs – The four DAC outputs from the LTC2635 are brought out to turrets labeled V_{OUTA} through V_{OUTD} . These may be connected to external instruments or other circuitry.

NOTE: DAC outputs are not in alphabetical order on the circuit board.

V_{REF} – The Ref turret is connected directly to the reference terminals of the LTC2635. When the integrated reference is being used, the reference voltage may be monitored

at this point. An external reference may also be applied to this turret after changing the setting in the QuikEval software, to external.

Grounding and Power Connections

Power (V_{CC}) – Normally DC1593A is powered by the DC590 controller. V_{CC} can be supplied to this turret, however the power supply on DC590 must be disabled! Refer to DC590 Quick Start Guide for more details on this mode of operation.

Grounding – Ground turrets as well as two grounding strips are provided.

DEMO MANUAL DC1593A

PARTS LIST

DC1593A

ITEM	QUANTITY	REFERENCE-DESCRIPTION	DESCRIPTION	MANUFACTURER'S PART NUMBER
REQUIRED CIRCUIT COMPONENTS:				
1	3	C1, C2, C4	CAP., CHIP X7R 0.1 μ F 16V	AVX, 0603YC104MAT1A 0603
2	1	C3	CAP., CHIP X5R 10 μ F 6.3V	TDK., C2012X5R0J106M
3	11	E1 TO E11	TURRET, TESTPOINT 0.064"	MILL-MAX, 2308-2
4	4	JP1 TO JP4	HEADER, 3Pin 1 Row 0.079CC	SAMTEC, TMM-103-02-L-S
5	4	FOR (JP1 TO JP4)	SHUNT, 0.079" CENTER	SAMTEC, 2SN-BK-G
6	1	J1	HEADER, VERTICAL DUAL 2X7 0.079CC	MOLEX, 87831-1420
7	2	R4, R5	RES., CHIP 4.99K 1%	VISHAY, CRCW06034K99FNEA
8	3	R1, R2, R3	RES., CHIP 10K 5%	VISHAY, CRCW060310K0JNEA
9	1	U2	I.C., SERIAL EEPROM, TSSOP-8	MICROCHIP, 24LC025-I/ST
10	1	(FOR INVENTORY ONLY)	CABLE ASSY., 8" STRIP	LINEAR RIBBON CABLE CA-2440
11	1		STENCIL	STENCIL 1593A

DC1593A-A

ITEM	QUANTITY	REFERENCE-DESCRIPTION	DESCRIPTION	MANUFACTURER'S PART NUMBER
1	1	DC1563A	GENERAL BOM	
9	1	U1	I.C., QUAD 16-BIT, I2C DAC	LINEAR TECH., LTC2635CUD-LMI12
12	1		FAB, PRINTED CIRCUIT BOARD	DEMO CIRCUIT 1593A

DC1593A-B

ITEM	QUANTITY	REFERENCE-DESCRIPTION	DESCRIPTION	MANUFACTURER'S PART NUMBER
1	1	DC1563A	GENERAL BOM	
2	1	U1	I.C., QUAD 16-BIT, I2C DAC	LINEAR TECH., LTC2635CUD-LMO12
3	1		FAB, PRINTED CIRCUIT BOARD	DEMO CIRCUIT 1593A

DC1593A-C

ITEM	QUANTITY	REFERENCE-DESCRIPTION	DESCRIPTION	MANUFACTURER'S PART NUMBER
1	1	DC1563A	GENERAL BOM	
2	1	U1	I.C., QUAD 16-BIT, I2C DAC	LINEAR TECH., LTC2635CUD-LZ12
3	1		FAB, PRINTED CIRCUIT BOARD	DEMO CIRCUIT 1593A

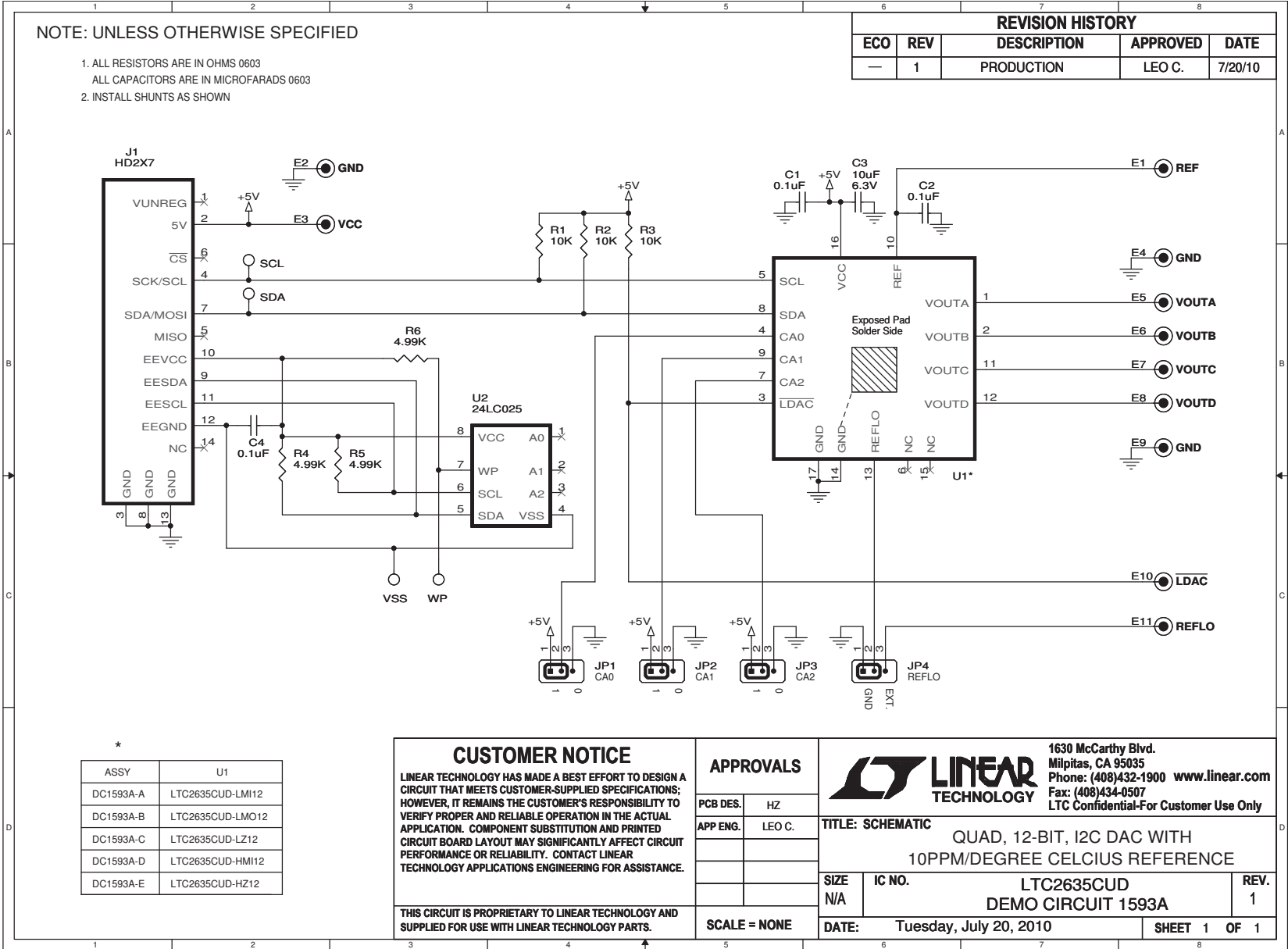
DC1593A-D

ITEM	QUANTITY	REFERENCE-DESCRIPTION	DESCRIPTION	MANUFACTURER'S PART NUMBER
1	1	DC1563A	GENERAL BOM	
2	1	U1	I.C., QUAD 16-BIT, I2C DAC	LINEAR TECH., LTC2635CUD-HMI12
3	1		FAB, PRINTED CIRCUIT BOARD	DEMO CIRCUIT 1593A

DC1593A-E

ITEM	QUANTITY	REFERENCE-DESCRIPTION	DESCRIPTION	MANUFACTURER'S PART NUMBER
1	1	DC1563A	GENERAL BOM	
2	1	U1	I.C., QUAD 16-BIT, I2C DAC	LINEAR TECH., LTC2635CUD-HZ12
3	1		FAB, PRINTED CIRCUIT BOARD	DEMO CIRCUIT 1593A

dc1593af



DEMO MANUAL DC1593A

DEMONSTRATION BOARD IMPORTANT NOTICE

Linear Technology Corporation (LTC) provides the enclosed product(s) under the following **AS IS** conditions:

This demonstration board (DEMO BOARD) kit being sold or provided by Linear Technology is intended for use for **ENGINEERING DEVELOPMENT OR EVALUATION PURPOSES ONLY** and is not provided by LTC for commercial use. As such, the DEMO BOARD herein may not be complete in terms of required design-, marketing-, and/or manufacturing-related protective considerations, including but not limited to product safety measures typically found in finished commercial goods. As a prototype, this product does not fall within the scope of the European Union directive on electromagnetic compatibility and therefore may or may not meet the technical requirements of the directive, or other regulations.

If this evaluation kit does not meet the specifications recited in the DEMO BOARD manual the kit may be returned within 30 days from the date of delivery for a full refund. **THE FOREGOING WARRANTY IS THE EXCLUSIVE WARRANTY MADE BY THE SELLER TO BUYER AND IS IN LIEU OF ALL OTHER WARRANTIES, EXPRESSED, IMPLIED, OR STATUTORY, INCLUDING ANY WARRANTY OF MERCHANTABILITY OR FITNESS FOR ANY PARTICULAR PURPOSE. EXCEPT TO THE EXTENT OF THIS INDEMNITY, NEITHER PARTY SHALL BE LIABLE TO THE OTHER FOR ANY INDIRECT, SPECIAL, INCIDENTAL, OR CONSEQUENTIAL DAMAGES.**

The user assumes all responsibility and liability for proper and safe handling of the goods. Further, the user releases LTC from all claims arising from the handling or use of the goods. Due to the open construction of the product, it is the user's responsibility to take any and all appropriate precautions with regard to electrostatic discharge. Also be aware that the products herein may not be regulatory compliant or agency certified (FCC, UL, CE, etc.).

No License is granted under any patent right or other intellectual property whatsoever. **LTC assumes no liability for applications assistance, customer product design, software performance, or infringement of patents or any other intellectual property rights of any kind.**

LTC currently services a variety of customers for products around the world, and therefore this transaction **is not exclusive**.

Please read the DEMO BOARD manual prior to handling the product. Persons handling this product must have electronics training and observe good laboratory practice standards. **Common sense is encouraged.**

This notice contains important safety information about temperatures and voltages. For further safety concerns, please contact a LTC application engineer.

Mailing Address:

Linear Technology
1630 McCarthy Blvd.
Milpitas, CA 95035

Copyright © 2004, Linear Technology Corporation