



Chipsmall Limited consists of a professional team with an average of over 10 year of expertise in the distribution of electronic components. Based in Hongkong, we have already established firm and mutual-benefit business relationships with customers from,Europe,America and south Asia,supplying obsolete and hard-to-find components to meet their specific needs.

With the principle of “Quality Parts,Customers Priority,Honest Operation,and Considerate Service”,our business mainly focus on the distribution of electronic components. Line cards we deal with include Microchip,ALPS,ROHM,Xilinx,Pulse,ON,Everlight and Freescale. Main products comprise IC,Modules,Potentiometer,IC Socket,Relay,Connector.Our parts cover such applications as commercial,industrial, and automotives areas.

We are looking forward to setting up business relationship with you and hope to provide you with the best service and solution. Let us make a better world for our industry!



## Contact us

Tel: +86-755-8981 8866 Fax: +86-755-8427 6832

Email & Skype: info@chipsmall.com Web: www.chipsmall.com

Address: A1208, Overseas Decoration Building, #122 Zhenhua RD., Futian, Shenzhen, China



**LTC3774EUHE**

## High Efficiency Dual Output Step-Down Converter with Very Low DCR Inductor

**DESCRIPTION**

Demonstration circuit DC2002A is a dual output synchronous buck converter featuring the [LTC3774EUHE](#). The demo board supplies two rails of 1.5V/30A and 1.2V/30A.

The power stage for each rail consists of a 0.33μH 0.32mΩ DCR inductor with a 11mm × 11mm footprint and a 6mm × 6mm DrMOS driven by the PWM outputs of the LTC3774EUHE at a switching frequency of 400kHz. The inductor, DrMOS and the local ceramic input and output capacitors forms the core converter which occupies a 1.1" × 1.1" area on the top layer. The control circuit is directly underneath on the bottom layer and occupies an area of 0.9" × 1.1". The result is a two sided core converter with a current density of 50A per square inch and a full load efficiency of 91.1% for the 1.5V rail and 90.0% for the 1.2V rail.

Additional features of this demo board include:

- Remote Sensing for Each Output
- PLLIN and CLKOUT Pins
- PGOOD, RUN and TRK/SS Pins for Each Output
- Optional Resistors to Tie the Two Outputs Together
- Optional Footprint for Hot Swap™ FET on the Input of Each Phase for MOSFET Failure Protection
- Optional Footprint for an LTC4449 Gate Driver and Discrete MOSFETs
- Optional Footprint for a Dual Phase Delta Power Block

**Design files for this circuit board are available at <http://www.linear.com/demo/DC2002A>**

LT, LT, LTC, LTM, Linear Technology and the Linear logo are registered trademarks and Hot Swap is a trademark of Linear Technology Corporation. All other trademarks are the property of their respective owners.

**PERFORMANCE SUMMARY**

Specifications are at T<sub>A</sub> = 25°C, No Airflow

PARAMETER	CONDITIONS	VALUE
Minimum Input Voltage		7V
Maximum Input Voltage		14V
Output Voltage V <sub>OUT1</sub>	I <sub>OUT1</sub> = 0A TO 30A, V <sub>IN</sub> = 7V to 14V	1.5V ±2%
Output Voltage V <sub>OUT2</sub>	I <sub>OUT2</sub> = 0A TO 30A, V <sub>IN</sub> = 7V to 14V	1.2V ±2%
V <sub>OUT1</sub> Maximum Output Current, I <sub>OUT1</sub>	V <sub>IN</sub> = 7V to 14V, V <sub>OUT1</sub> = 1.5V	30A
V <sub>OUT2</sub> Maximum Output Current, I <sub>OUT2</sub>	V <sub>IN</sub> = 7V to 14V, V <sub>OUT2</sub> = 1.2V	30A
Nominal Switching Frequency		400kHz
Efficiency	V <sub>OUT1</sub> = 1.5V, I <sub>OUT1</sub> = 30A, V <sub>IN</sub> = 12V	91.1% Typical
See Figures 2 and 3	V <sub>OUT2</sub> = 1.2V, I <sub>OUT2</sub> = 30A, V <sub>IN</sub> = 12V	90.0% Typical

## QUICK START PROCEDURE

Demonstration circuit 2002A is easy to set up to evaluate the performance of the LTC3774EUHE. Please refer to Figure 1 for proper measurement equipment setup and follow the procedure below.

1. With power off, connect the input supply, load and meters as shown in Figure 1. Preset the load to 0A and  $V_{IN}$  supply to be 0V. For both assemblies, place the jumpers in the following positions:

JP1	RUN1	ON
JP2	RUN2	ON
JP5	MODE	CCM

2. Adjust the input voltage to be between 7V and 14V.  $V_{OUT1}$  should be  $1.5V \pm 2\%$ .  
 $V_{OUT2}$  should be  $1.2V \pm 2\%$ .
3. Next, apply 30A load to each output and re-measure  $V_{OUT}$ .
4. Once the DC regulation is confirmed, observe the output voltage ripple, load step response, efficiency and other parameters.

Note 1. Use the BNC connectors labeled  $V_{OUT1}$  or  $V_{OUT2}$  to measure the output voltage ripple.

Note 2. Do not connect load from the  $V_{OS1}^+$  turret to the  $V_{OS1}^-$  turret or from the  $V_{OS2}^+$  turret to the  $V_{OS2}^-$  turret. This could damage the converter. Only apply load across the stud connectors on the edge of the board.

### Dynamic Load Circuit (Optional)

Demonstration circuit 2002A provides a simple load step circuit consisting of a MOSFET and sense resistor for each rail. To apply a load step, follow the steps below.

1. Pre-set the amplitude of a pulse generator to 0.0V and the duty cycle to 5% or less.
2. Connect the scope to the  $V_{OUT1}/V_{OUT2}$  BNC connectors for the rail under test with a coax cable. To monitor the load step current, connect the scope probe across the  $I_{STEP\pm}$  turrets for that rail.

3. Connect the output of the pulse generator to the PULSE GEN turret for the rail under test and connect the return to the adjacent GND turret.
4. With the converter running, slowly increase the amplitude of the pulse generator output to provide the desired load step pulse height. The scaling for the load step signal is 5mV/Amp.

### Single Output/Dual Phase Operation

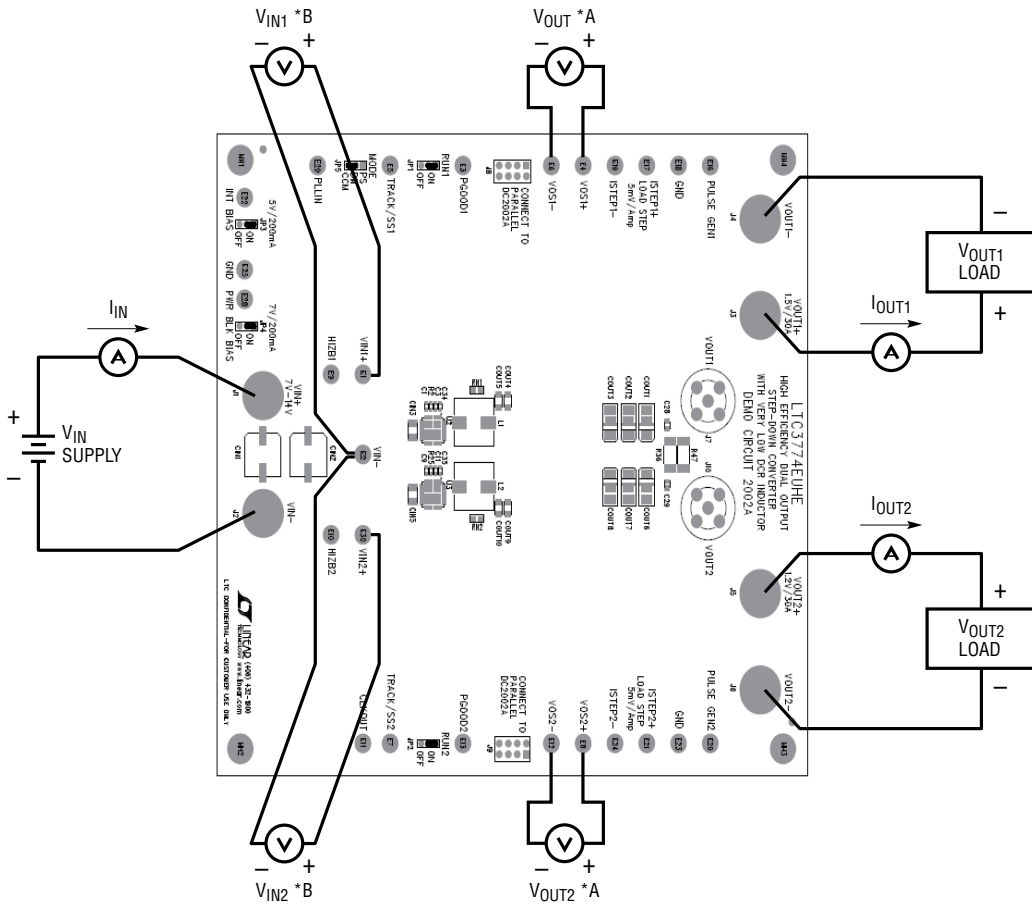
A single output/dual phase converter may be preferred for higher output current applications. The optional components required to tie the phases together are found on the lower left of the 1st sheet. To tie the two outputs together, make the following modifications:

1. Tie the two  $V_{OUT}$  shapes together with a piece of copper or a 0m $\Omega$  jumper at R47 and R36. One part to consider is Tepro RN5326.
2. Tie  $V_{OSNS1}$  to  $V_{OSNS2}$  by stuffing a 0 $\Omega$  resistor at R53 and tie  $V_{OS1}^-$  to  $V_{OS2}^-$  by stuffing a 0 $\Omega$  resistor at R92.
3. Tie  $I_{TH1}$  to  $I_{TH2}$  by stuffing a 0 $\Omega$  resistor at R68.
4. Tie  $RUN1$  to  $RUN2$  by stuffing a 0 $\Omega$  resistor at R54.
5. Tie  $TK/SS1$  to  $TK/SS2$  by stuffing a 0 $\Omega$  resistor at R48.

### Paralleling Boards

Up to 6 DC2002A demo boards can be paralleled to produce a single output, 12 phase converter. To connect two or more DC2002A boards together, first tie the two phases together as described in the Single Output/Dual Phase Operation section. Next, place the boards side by side such that header J8 of one board mates with socket J9 of the other. This will connect the common control signals together which are the  $V_{OSNS}$ ,  $V_{OS}^-$ ,  $I_{TH}$ ,  $RUN$  and  $TK/SS$  signals. It will also tie the  $CLKOUT$  signal of one phase to the  $PLLIN$  input of the other phase. Next, tie the  $V_{OUT}$ ,  $V_{IN}$  and  $GND$  of the boards together using the exposed copper on the edges of the board. Figure 6 shows how to tie 2 boards together for a single output, 4 phase converter.

**QUICK START PROCEDURE**



\*A MONITOR THE OUTPUT VOLTAGE ACROSS EITHER COUT4 OR COUT9 FOR ACCURATE EFFICIENCY MEASUREMENTS.  
 \*B MONITOR THE VOLTAGE AT VIN1 WHEN MEASURING THE EFFICIENCY OF PHASE 1 AND VIN2 WHEN MEASURING THE EFFICIENCY OF PHASE 2.

**Figure 1. Proper Measurement Equipment Setup**

## QUICK START PROCEDURE

### 1.5V/30A Rail, CCM, $f_{SW} = 400\text{kHz}$

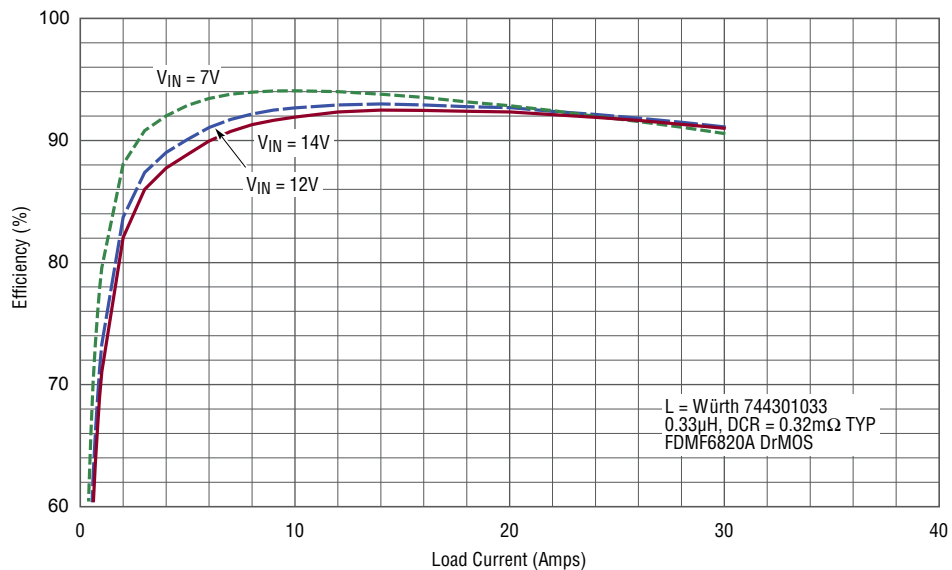


Figure 2. Efficiency Curves for the 1.5V Rail at  $V_{IN} = 12V, 14V$  and  $7V$  in CCM.

### 1.2V/30A Rail, CCM, $f_{SW} = 400\text{kHz}$

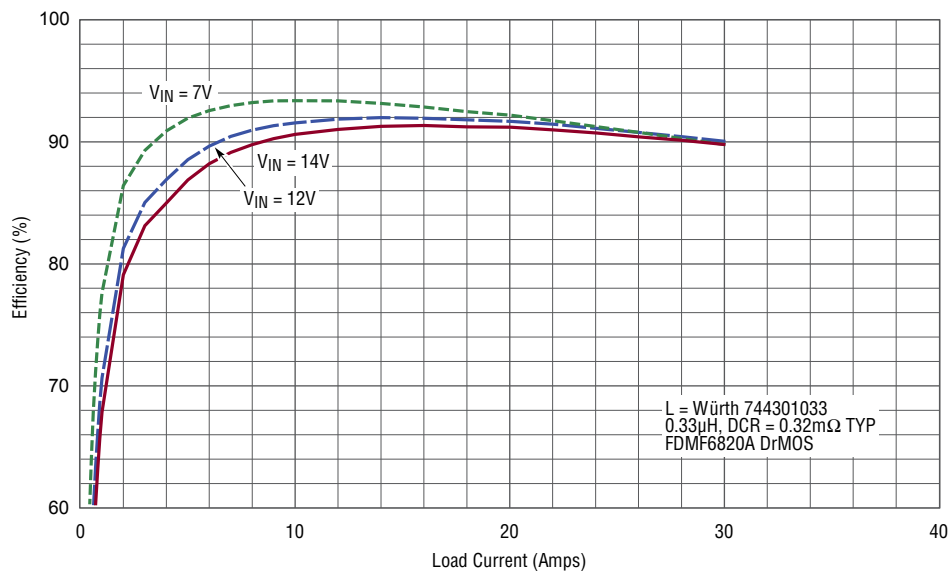
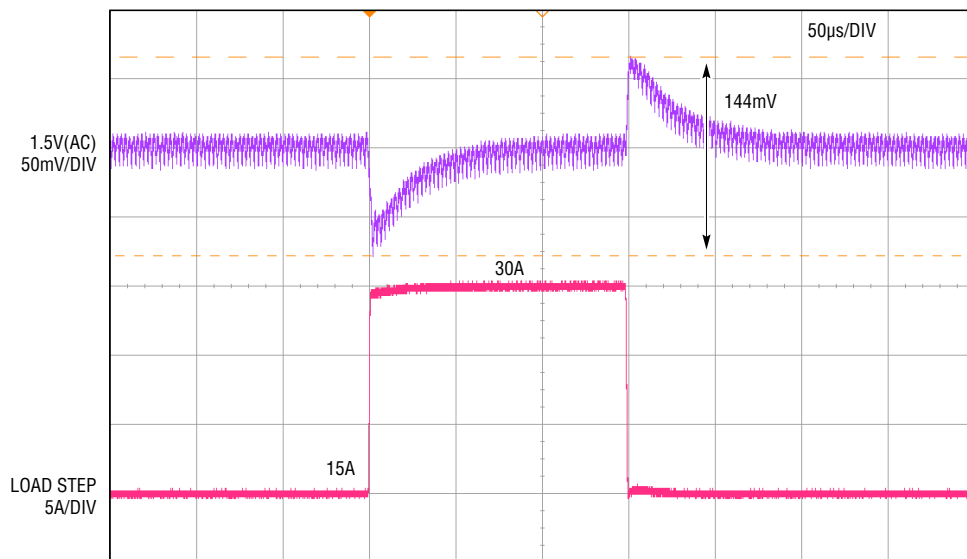


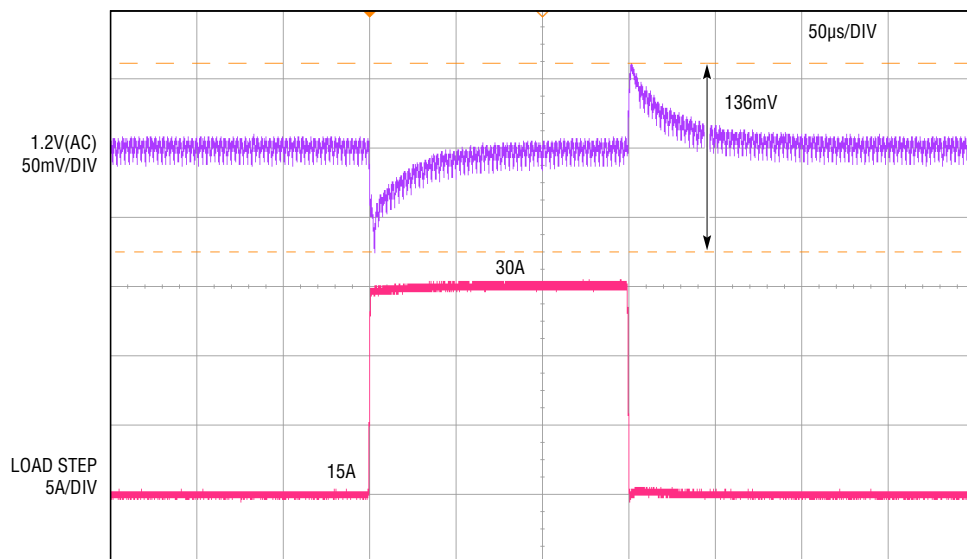
Figure 3. Efficiency Curves for the 1.2V Rail at  $V_{IN} = 12V, 14V$  and  $7V$  in CCM.

**QUICK START PROCEDURE**



DC2002A F04

**Figure 4. 50% to 100% to 50% Load Step Response of the 1.5V Rail.**  
 $C_{OUT} = 3 \times \text{Sanyo 2R5TPE330M9} \parallel 2 \times 100\mu\text{F X5R 1206}$ ,  $L = \text{Würth 744301033 (0.33}\mu\text{H)}$ ,  $f_{SW} = 400\text{kHz}$ .



DC2002A F05

**Figure 5. 50% to 100% to 50% Load Step Response of the 1.2V Rail.**  
 $C_{OUT} = 3 \times \text{Sanyo 2R5TPE330M9} \parallel 2 \times 100\mu\text{F X5R 1206}$ ,  $L = \text{Würth 744301033 (0.33}\mu\text{H)}$ ,  $f_{SW} = 400\text{kHz}$ .

# DEMO MANUAL DC2002A

## QUICK START PROCEDURE

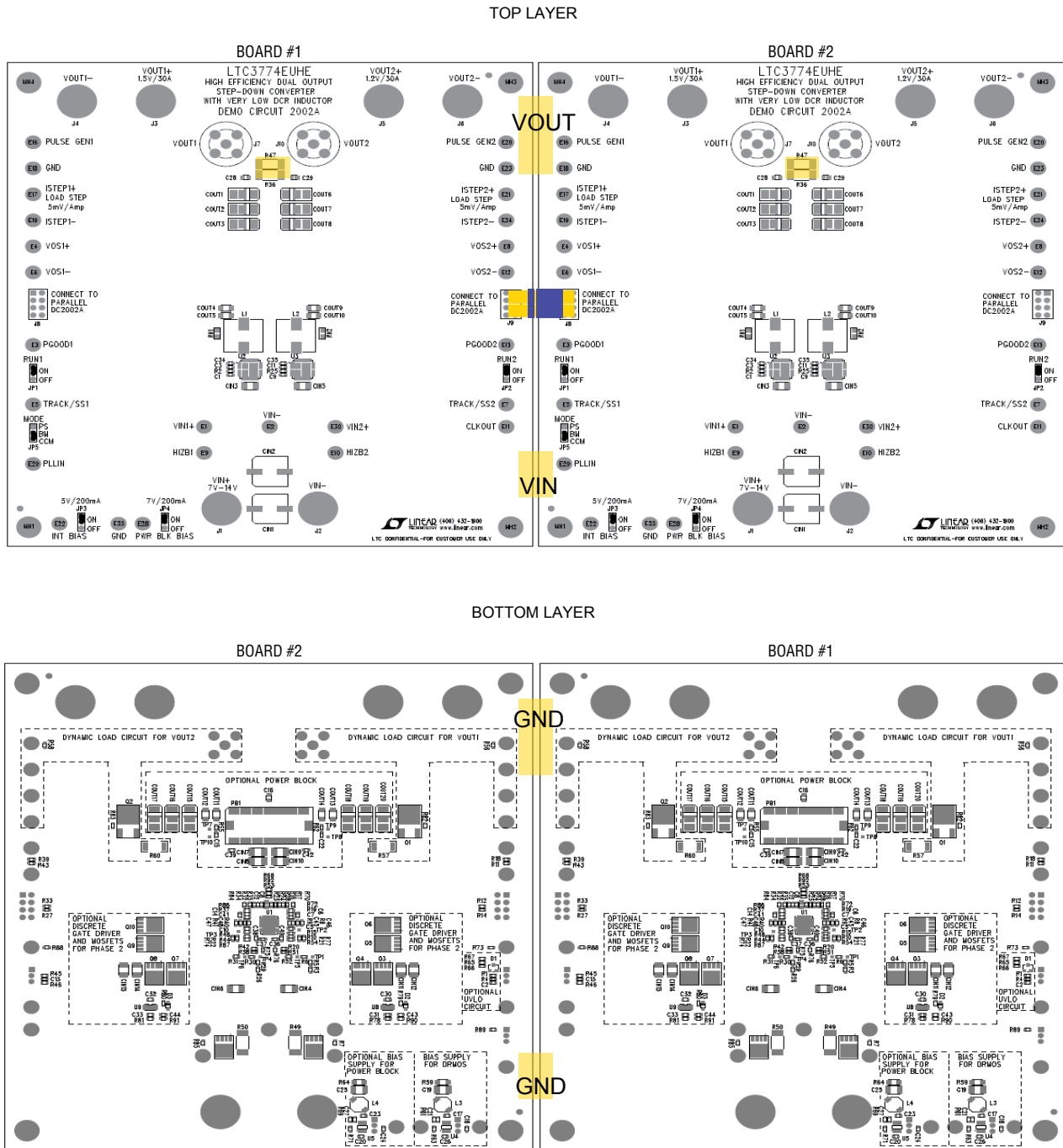


Figure 6. How to Parallel Two Boards for a Single Output, 4 Phase Converter

## PARTS LIST

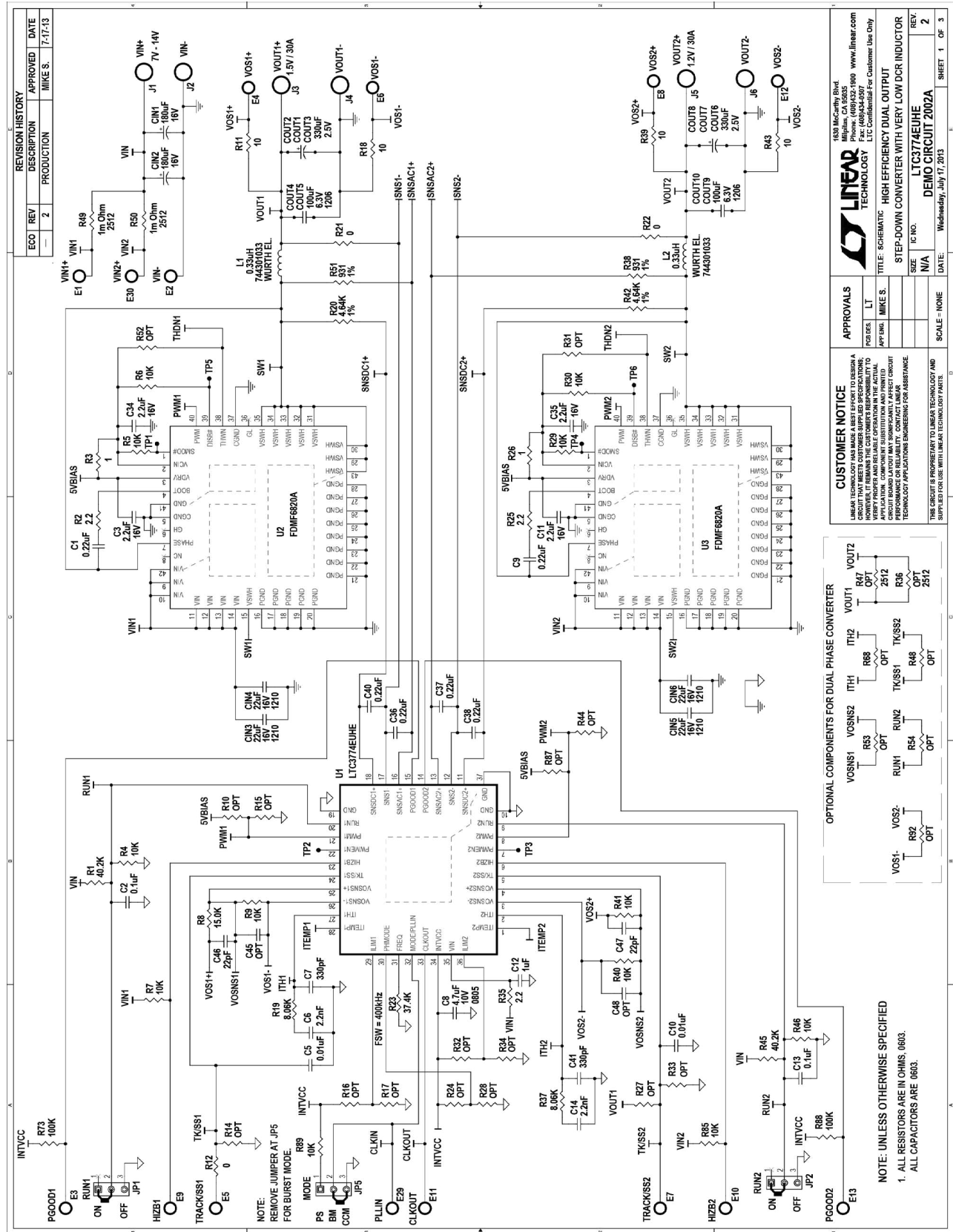
ITEM	QTY	REFERENCE	PART DESCRIPTION	MANUFACTURER/PART NUMBER
<b>Required Circuit Components</b>				
1	2	C <sub>IN1</sub> , C <sub>IN2</sub>	CAP, 180μF, 20%, 16V, OSCON	SANYO, 16SVP180MX
2	4	C <sub>IN3</sub> , C <sub>IN4</sub> , C <sub>IN5</sub> , C <sub>IN6</sub>	CAP, 22μF, 20%, 16V, X5R 1210	MURATA, GRM32ER61C226KE20L
3	6	C <sub>OUT1</sub> -C <sub>OUT3</sub> , C <sub>OUT6</sub> -C <sub>OUT8</sub>	CAP, 330μF, 20%, 2.5V, 7343	SANYO, 2R5TPE330M9
4	4	C <sub>OUT4</sub> , C <sub>OUT5</sub> , C <sub>OUT9</sub> , C <sub>OUT10</sub>	CAP, 100μF, 20%, 6.3V, X5R 1206	MURATA, GRM31CR60J107ME39L
5	6	C1, C9, C36, C37, C38, C40	CAP, 0.22μF, 10%, 25V, X7R 0603	AVX, 06033C224KAT2A
6	2	C2, C13	CAP, 0.1μF, 10%, 25V, X7R 0603	AVX, 06033C104KAT2A
7	4	C3, C11, C34, C35	CAP, 2.2μF, 10%, 16V, X7R 0603	MURATA, GRM188R61C225KE15D
8	2	C5, C10	CAP, 0.01μF, 10%, 25V, X7R 0603	AVX, 06033C103KAT2A
9	2	C6, C14	CAP, 2200pF, 5%, 25V, X7R 0603	AVX 06033C222JAT2A
10	2	C7, C41	CAP, 330pF, 10%, 50V, NPO 0603	AVX 06035A331KAT
11	1	C8	CAP, 4.7μF, 10%, 16V, X7R 0805	AVX, 0805YC475KAT2A
12	1	C12	CAP, 1μF, 20%, 25V, X5R 0603	AVX, 06033D105MAT2A
13	2	C46, C47	CAP, 22pF, 10%, 25V, NPO 0603	AVX, 06033A220KAT2A
14	2	C28, C29	CAP, 10μF, 20%, 6.3V, X5R 0805	AVX, 08056D106MAT2A
15	2	L1, L2	IND., 0.33μH, 0.325mΩ, DCR 20%	WÜRTH, 744301033
16	2	R1, R45	RES, 40.2k, 1%, 1/10W, 0603	VISHAY, CRCW060340K2FKEA
17	3	R2, R25, R35	RES, 2.2Ω, 1%, 1/10W, 0603	VISHAY, CRCW06032R20FKEA
18	2	R3, R26	RES, 1Ω, 1%, 1/10W, 0603	VISHAY, CRCW06031R00FKEA
19	12	R4-R7, R9, R29, R30, R40, R41, R46, R85, R89	RES, 10k, 1%, 1/10W, 0603	VISHAY, CRCW060310K0FKEA
20	1	R8	RES, 15k, 1%, 1/10W, 0603	VISHAY, CRCW060315K0FKEA
21	4	R11, R18, R39, R43	RES, 10Ω, 1%, 1/10W, 0603	VISHAY, CRCW060310R0FKEA
22	3	R12, R21, R22	RES, 0Ω, JUMPER 0603	VISHAY, CRCW06030000Z0EA
23	2	R20, R42	RES, 4.64k, 1%, 1/10W, 0603	VISHAY, CRCW06034K64FKEA
24	1	R23	RES, 37.4k, 1%, 1/10W, 0603	VISHAY, CRCW060337K4FKEA
25	2	R38, R51	RES, 931Ω, 1%, 1/10W, 0603	VISHAY, CRCW0603931RFKEA
26	2	R49, R50	RES, 0.001Ω, 2512, 5%	PANASONIC ERJM1WTJMOU
27	2	R73, R88	RES, 100K 1% 1/10W 0603	VISHAY, CRCW0603100KFKEA
28	1	U1	LTC3774EUHE	LINEAR TECH., LTC3774EUHE#PBF
29	2	U2, U3	MOSFET, DrMOS DC/DC 3.3V PWM	FAIRCHILD, FDMF6820A
30	2	R19, R37	RES, 8.06k, 1%, 1/16W, 0603	VISHAY, CRCW06038K06FKEA
<b>5V BIAS (for DrMOS)</b>				
1	1	R59	RES, 0Ω, JUMPER 1206	VISHAY, CRCW12060000Z0EA
2	1	U4	I.C., BUCK REGULATOR LT3470ETS8	LINEAR TECH., LT3470ETS8#PBF
3	1	C17	CAP, 0.22μF, 10%, 25V, X7R 0603	AVX, 06033C224KAT2A
4	2	C18, C26	CAP, 1μF, 20%, 25V, X5R 0603	AVX, 06033D105MAT2A
5	1	L3	IND., 33μH, -53DLC	TOKO, A914BYW-330M=P3
6	1	C19	CAP, 22μF, 20%, 16V, X5R 1210	MURATA, GRM32ER61C226KE20L
7	1	C21	CAP, 22pF, 10%, 25V, NPO 0603	AVX, 06033A220KAT2A
8	1	R61	RES, 604k, 1%, 1/10W, 0603	VISHAY, CRCW0603604KFKEA
9	1	R63	RES, 200k, 1%, 1/10W, 0603	VISHAY, CRCW0603200KFKEA

# DEMO MANUAL DC2002A

## PARTS LIST

ITEM	QTY	REFERENCE	PART DESCRIPTION	MANUFACTURER/PART NUMBER
<b>Dynamic Load Circuits</b>				
1	2	R56, R58	RES, 10k, 1%, 1/10W, 0603	VISHAY, CRCW060310K0FKEA
2	2	Q1, Q2	MOSFET, N-Channel 30-V	VISHAY, SUD50N03-12P-E3
3	2	R57, R60	RES 0.005Ω, 1%, 0.5W, 2010	VISHAY, WSL20105L000FEA
<b>Additional Components</b>				
1	0	C <sub>IN7</sub> -C <sub>IN12</sub> , C <sub>IN13</sub> , C <sub>IN14</sub> , C25	CAP, 1210	OPT
2	0	C <sub>OUT15</sub> -C <sub>OUT20</sub> (OPT)	CAP, 7343	OPT
3	0	C <sub>OUT11</sub> -C <sub>OUT14</sub>	CAP, 1206	OPT
4	0	C16	CAP, 0805	OPT
5	0	C15, C20, C22-C24, C27, C30-C33, C39, C42, C43, C44-C48	CAP, 0603	OPT
6	0	D1	DIODE SOT23	OPT
7	0	D2, D3	DIODE SOD-323	OPT
8	0	L4	IND, -53DLC	OPT
9	0	PB1	POWER BLOCK, D12S1R845A	OPT
10	0	Q3, Q4, Q5, Q6, Q7, Q8, Q9, Q10	MOSFET, PG-TDSON-8	OPT
11	0	RN1, RN2	RES, NTC, 0805	OPT
12	0	R10, R14, R15, R24, R27, R28, R31, R33, R44, R48, R52-R55, R62, R65-R72, R74-R84, R86, R87, R90, R91, R92	RES, 0603	OPT
13	0	R16, R32, R17, R34	RES, 0603	OPT
14	0	R36, R47	RES, 2512	OPT
15	0	R64	RES, 1206	OPT
16	0	U5	OPT, BUCK REGULATOR LT3470ETS8	OPT
17	0	U8, U9	GATE DRIVER, LTC4449EDCB	OPT
18	0	E28	OPT, TESTPOINT, TURRET, .095"	OPT
19	0	JP4	HEADER, 3 PIN, 0.079 SINGLE ROW	OPT
<b>Hardware</b>				
1	25	E1-E13, E16-E25, E29, E30	TESTPOINT, TURRET, .095"	MILL MAX, 2501-2-00-80-00-00-07-0
2	4	JP1, JP2, JP3, JP5	HEADER, 3 PIN 0.079 SINGLE ROW	SULLINS, NRPN031PAEN-RC
3	4	XJP1, XJP2, XJP3, XJP5	SHUNT, .079" CENTER	SAMTEC, 2SN-BK-G
4	6	J1, J2, J3, J4, J5, J6	STUD, TEST PIN	PEM, KFH-032-10
5	12	(J1, J2, J3, J4, J5, J6)x2	NUT, BRASS PL #10-32	ANY, 10-32M/S BR PL
6	6	J1, J2, J3, J4, J5, J6	RING, LUG #10	KEYSTONE, 8205
7	6	J1, J2, J3, J4, J5, J6	WASHER, TIN PLATED BRASS	ANY, #10EXT BZ TN
8	2	J7, J10	CON, BNC, 5 PINS	CONNEX, 112404, 7 Trays
9	1	J8	Header, Dbl Row, RT Angle, 2 × 4, 8 Pin	MILL-MAX, 802-10-008-20-001000
10	1	J9	Socket, Dbl Row, RT Angle, 2 × 4, 8 Pin	MILL-MAX, 803-43-008-20-001000

**SCHEMATIC DIAGRAM**



ECO	REV	DESCRIPTION	APPROVED	DATE
—	2	PRODUCTION	MIKE S.	7-17-13

REVISION HISTORY		APPROVALS		DATE	
ECO	REV	DESCRIPTION	APPROVED	DATE	
—	2	PRODUCTION	MIKE S.	7-17-13	

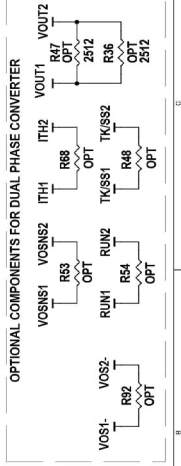
CUSTOMER NOTICE	
LINTEK TECHNOLOGY HAS MADE A BEST EFFORT TO DESIGN A VERIFIABLE AND RELIABLE CIRCUIT IN THE ACTUAL BOARD LAYOUT MAY VARY Slightly, A PERFECT CIRCUIT LAYOUT MAY REQUIRE ADDITIONAL ASSISTANCE FROM TECHNOLOGY APPLICATION ENGINEERING FOR ASSISTANCE.	

APPROVALS	
DESIGNER	MIKE S.
APPLIC. ENG.	MIKE S.
TESTING	MIKE S.

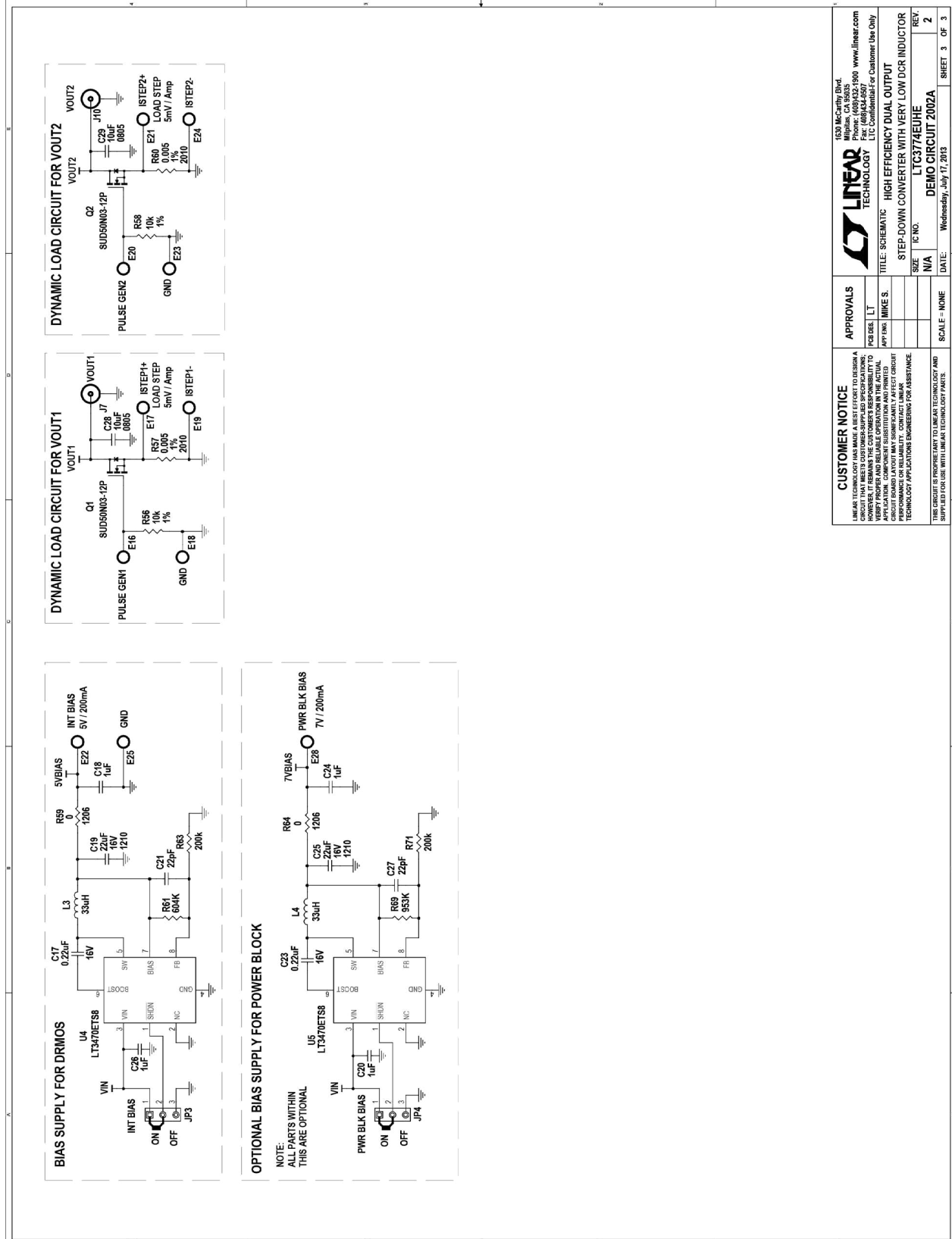
TITLE: SCHEMATIC HIGH EFFICIENCY DUAL OUTPUT STEP-DOWN CONVERTER WITH VERY LOW DCR INDUCTOR	
SIZE	IC NO.
N/A	LTC374EUIHE
DATE	DEMO CIRCUIT 2002A
WEDNESDAY, JULY 17, 2013	
SHEET 1	OF 3



NOTE: UNLESS OTHERWISE SPECIFIED  
 1. ALL RESISTORS ARE IN OHMS. (6003)  
 ALL CAPACITORS ARE 0603.



**SCHEMATIC DIAGRAM**



Information furnished by Linear Technology Corporation is believed to be accurate and reliable. However, no responsibility is assumed for its use. Linear Technology Corporation makes no representation that the interconnection of its circuits as described herein will not infringe on existing patent rights.

# DEMO MANUAL DC2002A

---

## DEMONSTRATION BOARD IMPORTANT NOTICE

Linear Technology Corporation (LTC) provides the enclosed product(s) under the following **AS IS** conditions:

This demonstration board (DEMO BOARD) kit being sold or provided by Linear Technology is intended for use for **ENGINEERING DEVELOPMENT OR EVALUATION PURPOSES ONLY** and is not provided by LTC for commercial use. As such, the DEMO BOARD herein may not be complete in terms of required design-, marketing-, and/or manufacturing-related protective considerations, including but not limited to product safety measures typically found in finished commercial goods. As a prototype, this product does not fall within the scope of the European Union directive on electromagnetic compatibility and therefore may or may not meet the technical requirements of the directive, or other regulations.

If this evaluation kit does not meet the specifications recited in the DEMO BOARD manual the kit may be returned within 30 days from the date of delivery for a full refund. **THE FOREGOING WARRANTY IS THE EXCLUSIVE WARRANTY MADE BY THE SELLER TO BUYER AND IS IN LIEU OF ALL OTHER WARRANTIES, EXPRESSED, IMPLIED, OR STATUTORY, INCLUDING ANY WARRANTY OF MERCHANTABILITY OR FITNESS FOR ANY PARTICULAR PURPOSE. EXCEPT TO THE EXTENT OF THIS INDEMNITY, NEITHER PARTY SHALL BE LIABLE TO THE OTHER FOR ANY INDIRECT, SPECIAL, INCIDENTAL, OR CONSEQUENTIAL DAMAGES.**

The user assumes all responsibility and liability for proper and safe handling of the goods. Further, the user releases LTC from all claims arising from the handling or use of the goods. Due to the open construction of the product, it is the user's responsibility to take any and all appropriate precautions with regard to electrostatic discharge. Also be aware that the products herein may not be regulatory compliant or agency certified (FCC, UL, CE, etc.).

No License is granted under any patent right or other intellectual property whatsoever. **LTC assumes no liability for applications assistance, customer product design, software performance, or infringement of patents or any other intellectual property rights of any kind.**

LTC currently services a variety of customers for products around the world, and therefore this transaction **is not exclusive**.

**Please read the DEMO BOARD manual prior to handling the product.** Persons handling this product must have electronics training and observe good laboratory practice standards. **Common sense is encouraged.**

This notice contains important safety information about temperatures and voltages. For further safety concerns, please contact a LTC application engineer.

Mailing Address:

Linear Technology  
1630 McCarthy Blvd.  
Milpitas, CA 95035

Copyright © 2004, Linear Technology Corporation