



Chipsmall Limited consists of a professional team with an average of over 10 year of expertise in the distribution of electronic components. Based in Hongkong, we have already established firm and mutual-benefit business relationships with customers from,Europe,America and south Asia,supplying obsolete and hard-to-find components to meet their specific needs.

With the principle of "Quality Parts,Customers Priority,Honest Operation,and Considerate Service",our business mainly focus on the distribution of electronic components. Line cards we deal with include Microchip,ALPS,ROHM,Xilinx,Pulse,ON,Everlight and Freescale. Main products comprise IC,Modules,Potentiometer,IC Socket,Relay,Connector.Our parts cover such applications as commercial,industrial, and automotives areas.

We are looking forward to setting up business relationship with you and hope to provide you with the best service and solution. Let us make a better world for our industry!



Contact us

Tel: +86-755-8981 8866 Fax: +86-755-8427 6832

Email & Skype: info@chipsmall.com Web: www.chipsmall.com

Address: A1208, Overseas Decoration Building, #122 Zhenhua RD., Futian, Shenzhen, China



LTM4622EV

Ultrathin Dual 2.5A, Single 5A Step-Down μ Module Regulator

DESCRIPTION

Demonstration Circuit 2249A features the **LTM[®]4622EV** μ Module[®] regulator, a tiny low profile high performance high efficiency dual step-down regulator. The LTM4622 has an operating input voltage range of 3.6V to 20V and is able to provide an output current of up to 2.5A for each channel. Each output's voltage is programmable from 0.6V to 5.5V. The LTM4622 is a complete DC-DC point of load regulator in a low profile thermally enhanced 6.25mm \times 6.25mm \times 1.82mm LGA package requiring only a few input and output capacitors. Output voltage tracking is available through the TRACK/SS pin for supply rail sequencing.

External clock synchronization is available through the SYNC/MODE pin. For high efficiency, at low load currents, the MODE pin jumper (JP3) selects the Burst Mode[®] option for operation in less noise sensitive applications. The LTM4622 data sheet must be read in conjunction with this demo manual for working on or modifying DC2249A.

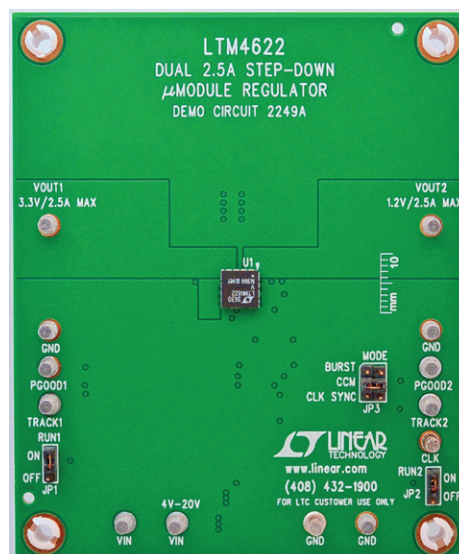
Design files for this circuit board are available at <http://www.linear.com/demo/DC2249A>

LT, LT, LTC, LTM, Linear Technology, the Linear logo, μ Module and Burst Mode are registered trademarks of Linear Technology Corporation. All other trademarks are the property of their respective owners.

PERFORMANCE SUMMARY Specifications are at $T_A = 25^\circ\text{C}$

PARAMETER	CONDITIONS/NOTES	VALUE
Input Voltage Range		4V – 20V
Output Voltage V_{OUT1} , V_{OUT2}	Programmable with FB Pin Resistors	3.3VDC, 1.2VDC
Maximum Continuous Output Current Each Phase	Derating is Necessary for Certain Operating Conditions. See Data Sheet for Details	2.5ADC
Default Operating Frequency		1MHz
Efficiency	$V_{IN} = 12\text{V}$, $V_{OUT1} = 3.3\text{V}$, $I_{OUT} = 2.5\text{A}$, $f_{SW} = 2\text{MHz}$ $V_{IN} = 12\text{V}$, $V_{OUT2} = 1.2\text{V}$, $I_{OUT} = 2.5\text{A}$, $f_{SW} = 1\text{MHz}$	87.5%, See Figure 2 76.7%, See Figure 2

BOARD PHOTO



QUICK START PROCEDURE

Demonstration Circuit 2249A is an easy way to evaluate the performance of the LTM4622. Please refer to Figure 1 for test setup connections and follow the procedure below.

1. With power off, place the jumpers in the following positions for a typical application for 3.3V_{OUT} and 1.2V_{OUT} rails:

JP1	JP2	JP3
RUN1	RUN2	MODE
ON	ON	CCM

2. Before powering up the input supply and loads, preset the input voltage supply to be between 4V to 20V. Preset the load current for each output rail to 0A.
3. With power off, connect the loads, input voltage supply and meters as shown in Figure 1.
4. Turn on the input power supply. The output voltage meters for each output rail should display the programmed output voltage $\pm 2\%$.

5. Once the proper output voltages are established, adjust the load current on each rail within the 0A – 2.5A range and observe each output rail’s load regulation, efficiency, and other parameters.
6. To observe increased light load efficiency, place the mode pin jumper (JP3) in the BURST position.

NOTE: Demonstration Circuit 2249A is designed to exhibit the wide output voltage range of the LTM4622. In order to keep inductor current ripple within reasonable limits, it is recommended to increase programmed switching frequency for higher output voltages. The programmed switching frequency for data provided in this manual is consistent with switching frequency recommendations corresponding to the programmed output voltage. Please refer to the LTM4622 data sheet for more details regarding recommended switching frequency for your particular application.

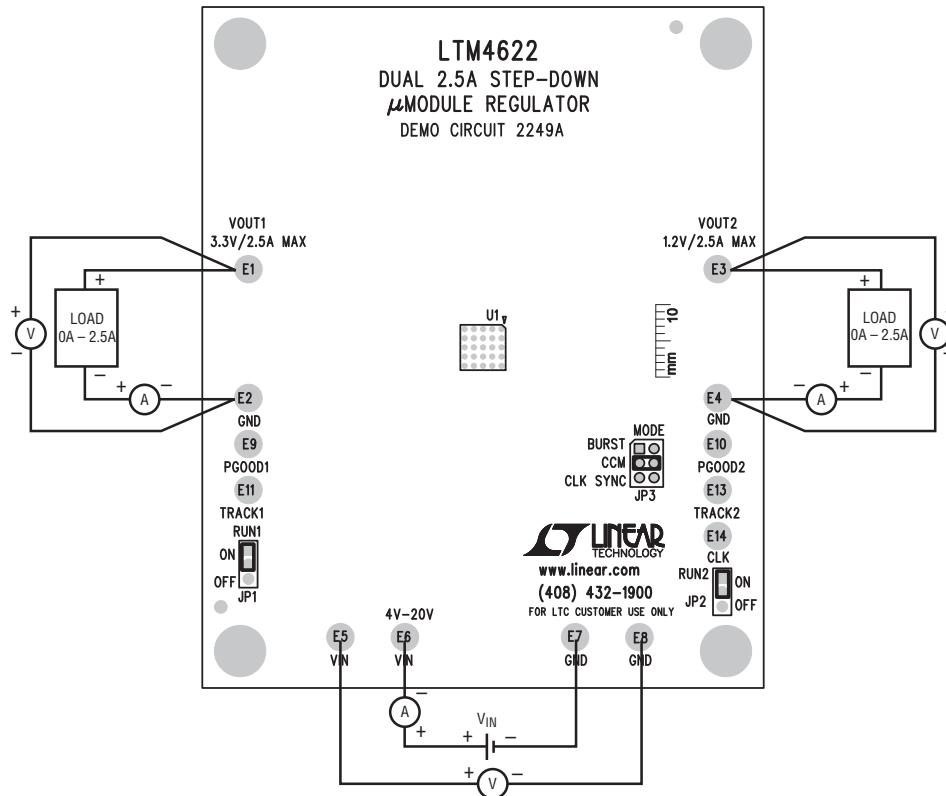


Figure 1. Test Setup

QUICK START PROCEDURE

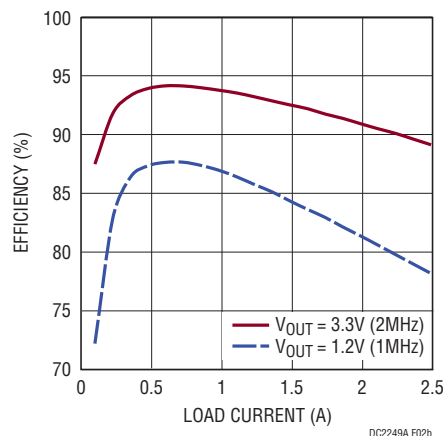
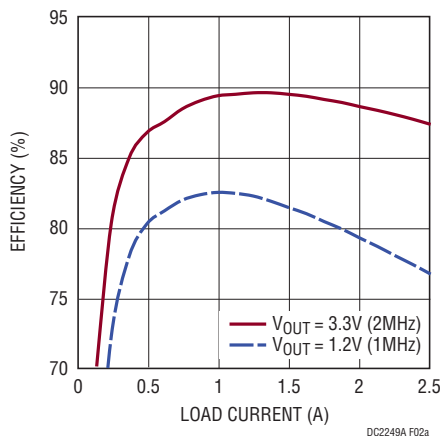


Figure 2. Measured Supply Efficiency at $12V_{IN}$ and $5V_{IN}$

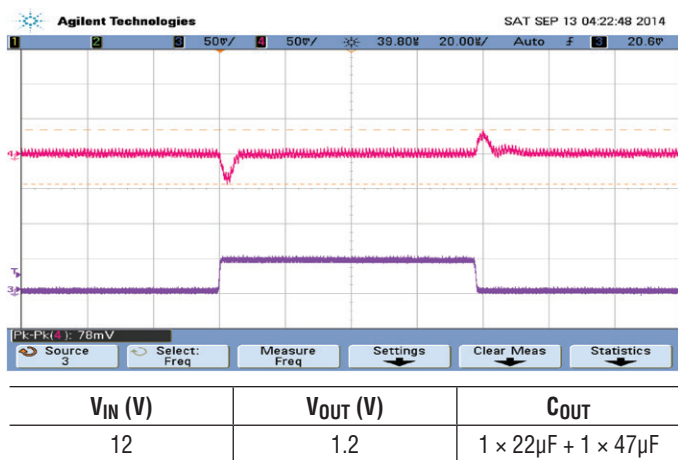


Figure 3. Measured Load Transient Response (1A – 2A Load Step)

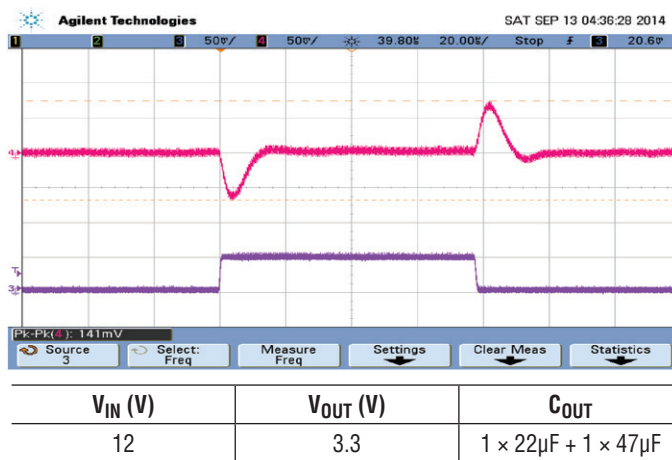
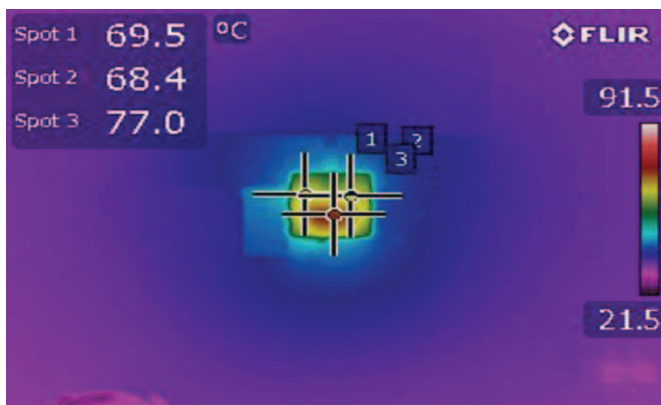


Figure 4. Measured Load Transient Response (1A – 2A Load Step)



V_{IN} (V)	V_{OUT1} (V), I_{OUT1} (A)	V_{OUT2} (V), I_{OUT2} (A)	f_{SW} (MHz)	$T_{AMBIENT}$ (°C)
12	3.3, 2.5	1.2, 2.5	2	22

Figure 5. Thermal Capture at Full Load. Natural Convection

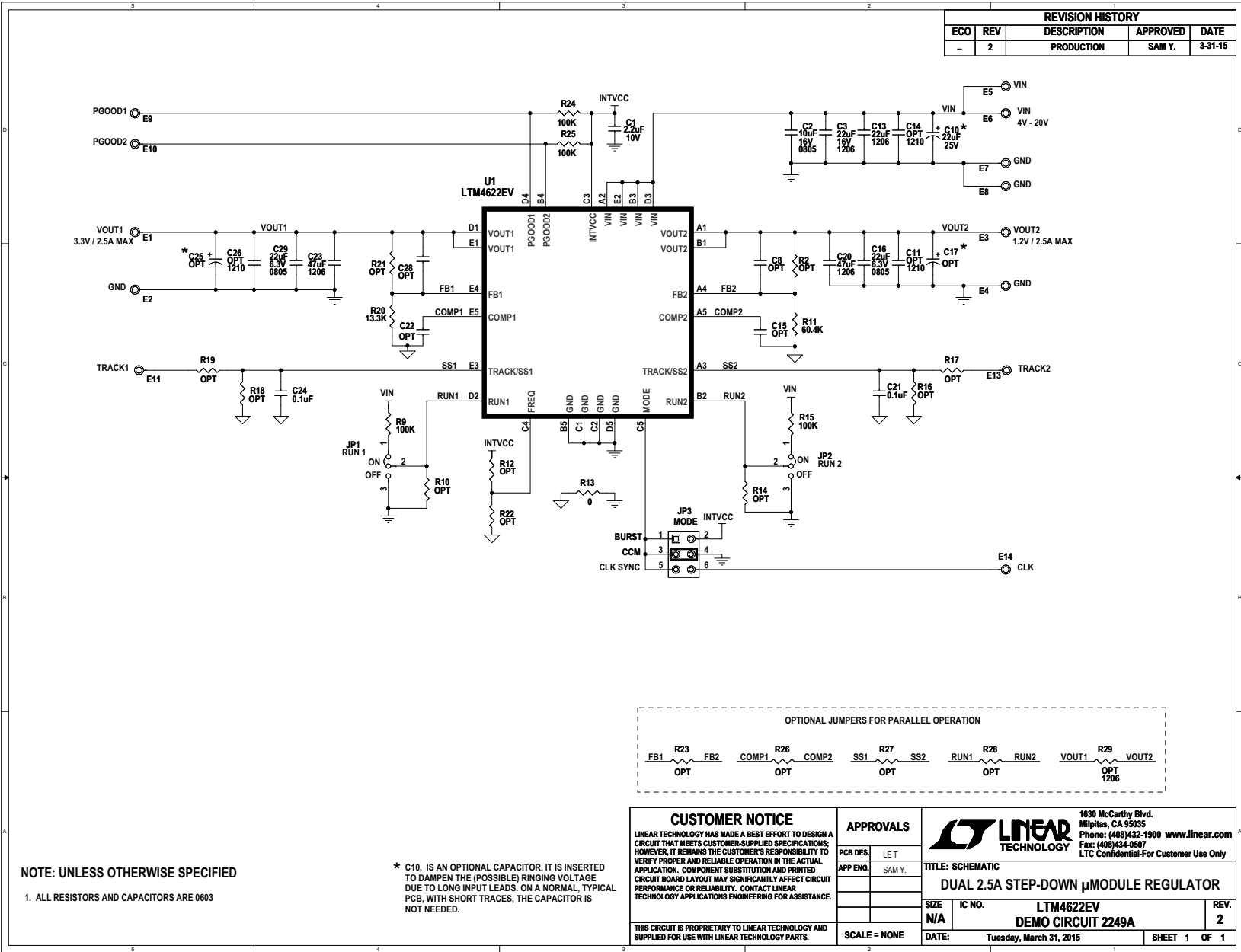
DEMO MANUAL DC2249A

PARTS LIST

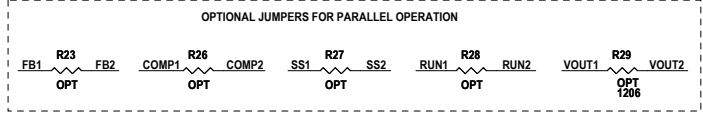
ITEM	QTY	REFERENCE	PART DESCRIPTION	MANUFACTURER/PART NUMBER
Required Circuit Components				
1	1	C1	CAP., X5R, 2.2 μ F, 10V, 10%, 0603	MURATA, GRM188R61A225KE34D
2	2	C3, C13	CAP., X5R, 22 μ F, 16V, 20%, 1206	MURATA, GRM31CR61C226ME15L
3	2	C16, C29	CAP., X5R, 22 μ F, 6.3V, 20%, 0805	MURATA, GRM21BR60J226ME39L
4	2	C20, C23	CAP., X5R, 47 μ F, 6.3V, 20%, 1206	MURATA, GRM31CR60J476ME19L
5	2	C21, C24	CAP., X5R, 0.1 μ F, 25V, 10%, 0603	MURATA, GRM188R61E104KA01D
6	1	R11	RES., CHIP, 60.4k, 1/16W, 1%, 0603	VISHAY, CRCW060360K4FKEA
7	1	R20	RES., CHIP, 13.3k, 1/16W, 1%, 0603	VISHAY, CRCW060313K3FKEA
8	1	U1	I.C., LTM4622EV, LGA 25-6.25 \times 6.25	LINEAR TECH., LTM4622EV#PBF
Additional Demo Board Circuit Components				
1	1	C2	CAP., X5R, 10 μ F, 16V, 20%, 0805	MURATA, GRM21BR61C106ME15L
2	0	C8, C15, C22, C28	CAP., OPT, 0603	OPT
3	0	C11, C14, C26	CAP., OPT, 1210	OPT
4	0	C10, C17, C25	CAP., OPT, 7343	OPT
5	0	R2, R10, R12, R14, R16-R19, R21, R22, R23, R26, R27, R28	RES, 0603	OPT
6	4	R9, R15, R24, R25	RES., CHIP, 100k, 1/16W, 1%, 0603	VISHAY, CRCW0603100KFKEA
7	1	R13	RES., CHIP, 0 Ω , 1/16W, 1%, 0603	VISHAY, CRCW06030000Z0EA
8	0	R29	RES., OPT, 1206	OPT
Hardware				
1	13	E1-E11, E13, E14	TESTPOINT, TURRET, 0.095"	MILL-MAX, 2501-2-00-80-00-00-07-0
2	2	JP1, JP2	HEADER, 1 \times 3 0.079	SULLINS, NRPN031PAEN-RC
3	1	JP3	HEADER, 2 \times 3 0.079	SULLINS, NRPN032PAEN-RC
4	3	XJP1, XJP2, XJP3	SHUNT	SAMTEC 2SN-BK-G
5	4		STAND OFF, SNAP ON, 0.375" TALL	KEYSTONE_8832

SCHEMATIC DIAGRAM

DEMO MANUAL DC22249A



REVISION HISTORY				
ECO	REV	DESCRIPTION	APPROVED	DATE
-	2	PRODUCTION	SAM Y.	3-31-15



NOTE: UNLESS OTHERWISE SPECIFIED
 1. ALL RESISTORS AND CAPACITORS ARE 0603

* C10, IS AN OPTIONAL CAPACITOR. IT IS INSERTED TO DAMPEN THE (POSSIBLE) RINGING VOLTAGE DUE TO LONG INPUT LEADS. ON A NORMAL, TYPICAL PCB, WITH SHORT TRACES, THE CAPACITOR IS NOT NEEDED.

CUSTOMER NOTICE LINEAR TECHNOLOGY HAS MADE A BEST EFFORT TO DESIGN A CIRCUIT THAT MEETS CUSTOMER-SUPPLIED SPECIFICATIONS. HOWEVER, IT REMAINS THE CUSTOMER'S RESPONSIBILITY TO VERIFY PROPER AND RELIABLE OPERATION IN THE ACTUAL APPLICATION. COMPONENT SUBSTITUTION AND PRINTED CIRCUIT BOARD LAYOUT MAY SIGNIFICANTLY AFFECT CIRCUIT PERFORMANCE OR RELIABILITY. CONTACT LINEAR TECHNOLOGY APPLICATIONS ENGINEERING FOR ASSISTANCE.		APPROVALS PCB DES. LET APP ENG. SAM Y.		1630 McCarthy Blvd. Milpitas, CA 95035 Phone: (408)432-1900 www.linear.com Fax: (408)434-6507 LTC Confidential-For Customer Use Only	
TITLE: SCHEMATIC DUAL 2.5A STEP-DOWN μMODULE REGULATOR				SIZE N/A SCALE = NONE	IC NO. LTM4622EV DEMO CIRCUIT 2249A DATE: Tuesday, March 31, 2015
THIS CIRCUIT IS PROPRIETARY TO LINEAR TECHNOLOGY AND SUPPLIED FOR USE WITH LINEAR TECHNOLOGY PARTS.				REV. 2 SHEET 1 OF 1	

DEMO MANUAL DC2249A

DEMONSTRATION BOARD IMPORTANT NOTICE

Linear Technology Corporation (LTC) provides the enclosed product(s) under the following **AS IS** conditions:

This demonstration board (DEMO BOARD) kit being sold or provided by Linear Technology is intended for use for **ENGINEERING DEVELOPMENT OR EVALUATION PURPOSES ONLY** and is not provided by LTC for commercial use. As such, the DEMO BOARD herein may not be complete in terms of required design-, marketing-, and/or manufacturing-related protective considerations, including but not limited to product safety measures typically found in finished commercial goods. As a prototype, this product does not fall within the scope of the European Union directive on electromagnetic compatibility and therefore may or may not meet the technical requirements of the directive, or other regulations.

If this evaluation kit does not meet the specifications recited in the DEMO BOARD manual the kit may be returned within 30 days from the date of delivery for a full refund. **THE FOREGOING WARRANTY IS THE EXCLUSIVE WARRANTY MADE BY THE SELLER TO BUYER AND IS IN LIEU OF ALL OTHER WARRANTIES, EXPRESSED, IMPLIED, OR STATUTORY, INCLUDING ANY WARRANTY OF MERCHANTABILITY OR FITNESS FOR ANY PARTICULAR PURPOSE. EXCEPT TO THE EXTENT OF THIS INDEMNITY, NEITHER PARTY SHALL BE LIABLE TO THE OTHER FOR ANY INDIRECT, SPECIAL, INCIDENTAL, OR CONSEQUENTIAL DAMAGES.**

The user assumes all responsibility and liability for proper and safe handling of the goods. Further, the user releases LTC from all claims arising from the handling or use of the goods. Due to the open construction of the product, it is the user's responsibility to take any and all appropriate precautions with regard to electrostatic discharge. Also be aware that the products herein may not be regulatory compliant or agency certified (FCC, UL, CE, etc.).

No License is granted under any patent right or other intellectual property whatsoever. **LTC assumes no liability for applications assistance, customer product design, software performance, or infringement of patents or any other intellectual property rights of any kind.**

LTC currently services a variety of customers for products around the world, and therefore this transaction **is not exclusive**.

Please read the DEMO BOARD manual prior to handling the product. Persons handling this product must have electronics training and observe good laboratory practice standards. **Common sense is encouraged.**

This notice contains important safety information about temperatures and voltages. For further safety concerns, please contact a LTC application engineer.

Mailing Address:

Linear Technology
1630 McCarthy Blvd.
Milpitas, CA 95035

Copyright © 2004, Linear Technology Corporation