



Chipsmall Limited consists of a professional team with an average of over 10 year of expertise in the distribution of electronic components. Based in Hongkong, we have already established firm and mutual-benefit business relationships with customers from,Europe,America and south Asia,supplying obsolete and hard-to-find components to meet their specific needs.

With the principle of “Quality Parts,Customers Priority,Honest Operation,and Considerate Service”,our business mainly focus on the distribution of electronic components. Line cards we deal with include Microchip,ALPS,ROHM,Xilinx,Pulse,ON,Everlight and Freescale. Main products comprise IC,Modules,Potentiometer,IC Socket,Relay,Connector.Our parts cover such applications as commercial,industrial, and automotives areas.

We are looking forward to setting up business relationship with you and hope to provide you with the best service and solution. Let us make a better world for our industry!



## Contact us

Tel: +86-755-8981 8866 Fax: +86-755-8427 6832

Email & Skype: info@chipsmall.com Web: www.chipsmall.com

Address: A1208, Overseas Decoration Building, #122 Zhenhua RD., Futian, Shenzhen, China



## DESCRIPTION

The DC2347A contains only those functions necessary to safely program and verify the [LTC2937](#) configuration EEPROM. It serves no other purpose. The DC2347A holds the LTC2937 in a clamshell socket for convenient access and replacement of parts. The LTpowerPlay™ GUI software, running on a PC, provides a simple interface to program and verify the EEPROM with a user supplied configuration.

### What Can You Do with The DC2347A

- Program the contents of the EEPROM with your project or HEX file.
- Verify the contents of the EEPROM against your project or HEX file.
- Verify the contents of the EEPROM against factory defaults.

### Demo System Hardware Required

- Microsoft Windows PC
- DC1613 USB to I<sup>2</sup>C/SMBus/PMBus Controller
- DC2347A Programming Board

### Demo System Software Required

- LTpowerPlay (GUI)

The LTpowerPlay software can be downloaded from:

<http://www.linear.com/ltpowerplay>

To access technical support documents for LTC Power System Management Products visit "Help -> View Online Help" in the LTpowerPlay menu.

**Design files for this circuit board are available at**  
<http://www.linear.com/demo/DC2347A>

LT, LT, LTC, LTM, Linear Technology and the Linear logo are registered trademarks and LTpowerPlay is a trademark of Linear Technology Corporation. All other trademarks are the property of their respective owners.

## FEATURES

### DC2347A

- Program and Verify EEPROM for the LTC2937
- Easily Change Parts with the Clamshell Socket
- Simple Interface to the PC Using LTpowerPlay
- Powered by the USB Connection

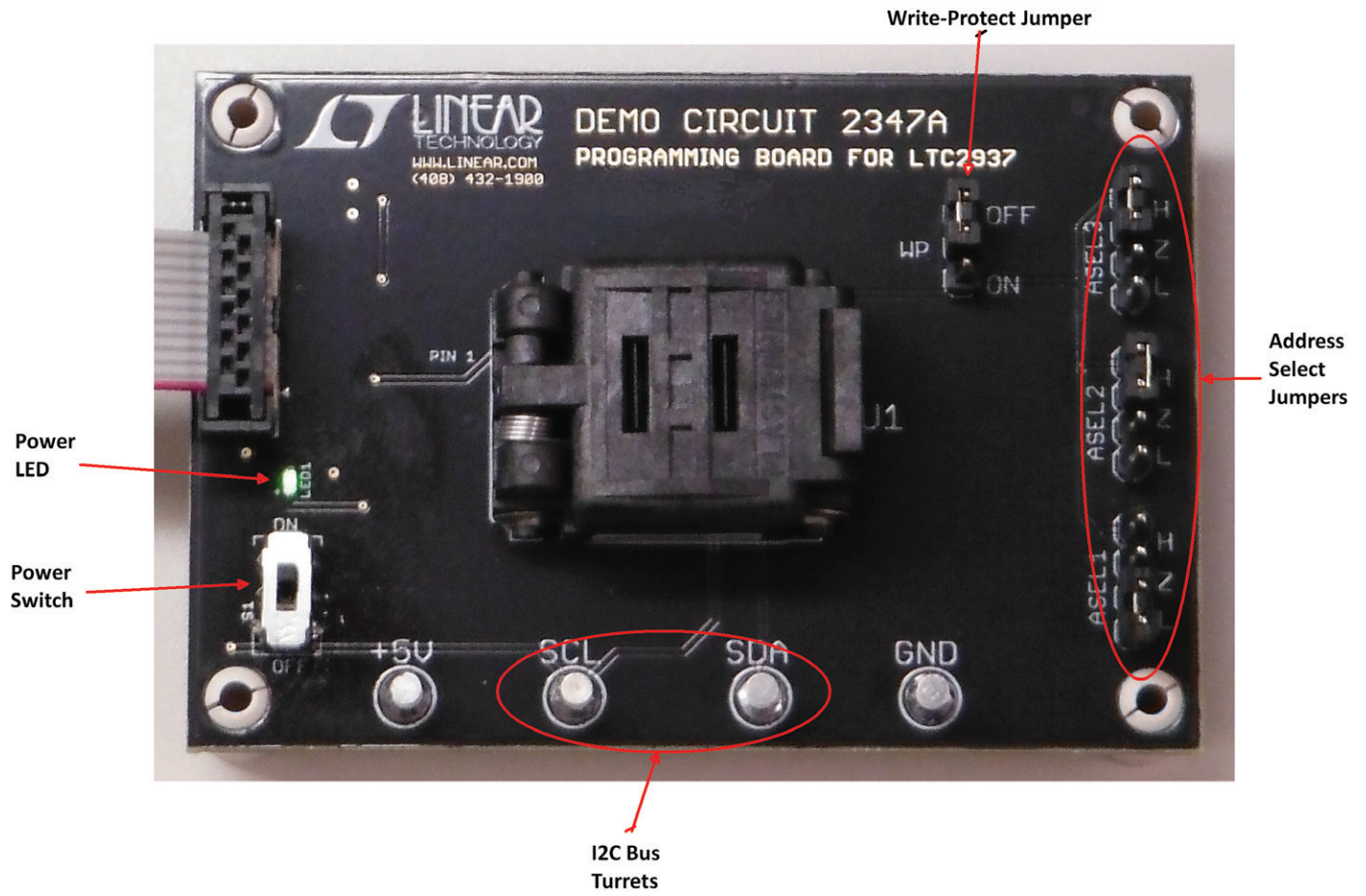
### LTC2937

- Time and Event-Based Power Supply Sequencing
- 12 Programmable Undervoltage and Overvoltage Comparators with 0.75% Accuracy
- Stalled Power Supply Detection

- Single Wire Synchronization Allows Controller Expansion to 50 Devices (300 Power Supplies)
- Configuration and Fault Logging in EEPROM
- EEPROM Rated to 85°C, 10k writes, 20 year Retention
- Supported by LTpowerPlay GUI
- Fault and System Status Registers
- Reset Output with Programmable Delay
- I<sup>2</sup>C/SMBus Interface
- Wide Input Supply Voltage Range: 2.9V to 16.5V
- 28-Pin QFN (5mm × 6mm) Package



## BOARD PHOTO



## QUICK START PROCEDURE

The DC2347A system makes it easy to program and verify the contents of the LTC2937.

1. Download and install the LTpowerPlay GUI:

<http://www.linear.com/ltpowerplay>

2. Remove the DC2347A board from the ESD protective bag and place it on a level surface. Connect the DC1613 I<sup>2</sup>C/SMBus/PMBus Controller to the DC2347A board using the 12-pin ribbon cable.

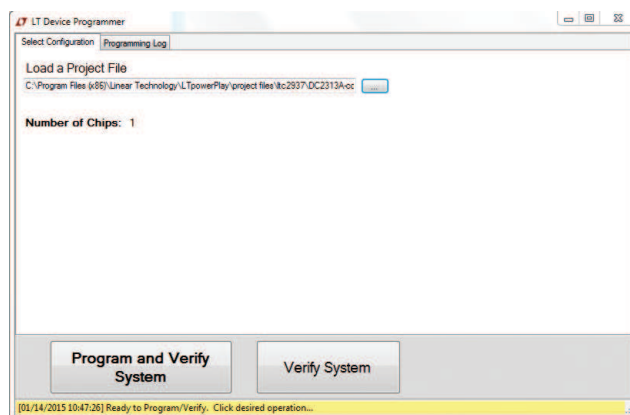
Set the jumpers ASEL1, ASEL2, and ASEL3 for the desired device I<sup>2</sup>C address. Note that each project file contains a fixed device address, which must match the ASEL jumper settings on the board. See the LTC2937 data sheet for a discussion of device addressing.

Set the WP jumper to OFF.

Set the POWER switch to OFF.

3. Connect the USB-to-I<sup>2</sup>C/SMBus/PMBus Controller to a USB port on your PC.
4. Insert an LTC2937 part into the clamshell socket and verify that it is upright and not upside-down in the socket. Close the lid; it will snap shut. Only remove and replace ICs in the socket when the POWER switch is OFF.
5. Apply power to the device by sliding the POWER switch to ON. When the part receives power it powers-up its 3.3V VDD pin, and LED1 will illuminate green. If no part is installed in the socket, or if the part is up-side down, the LED will not illuminate, and programming is not possible.
6. Launch the LTpowerPlay GUI. The GUI automatically identifies the DC2347A and launches the appropriate interface protocol.

7. If the Programming Utility does not launch automatically, select LTpowerPlay→Utilities→Programming Utility from the menu.
8. Click “...” and select a project file to program the device. Ensure that the ASEL jumpers match the device address in the project file.



9. Click “Program and Verify System” to program the device. Upon success, the status bar at the bottom will turn from yellow to green and indicate “Successfully Programmed and Verified System!”
10. After programming the LTC2937, set the POWER switch to OFF and remove the part from the socket. Repeat steps 4 to 9 with additional LTC2937 parts as necessary.

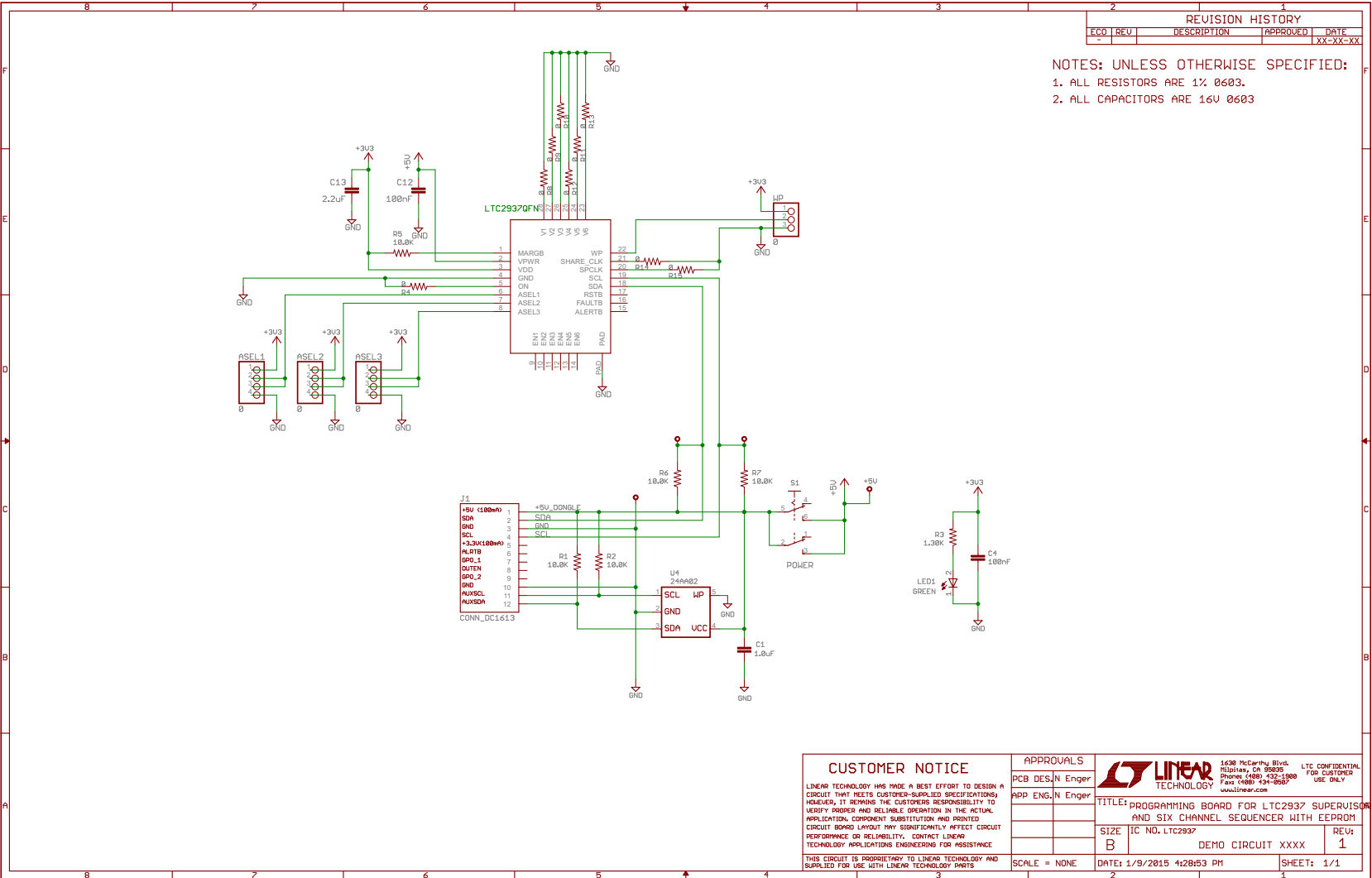
# DEMO MANUAL DC2347A

## PARTS LIST

ITEM	QTY	REFERENCE	PART DESCRIPTION	MANUFACTURER/PART NUMBER
<b>Required Circuit Components</b>				
1	3	C4, C12	CAP, CER, 100nF, X5R, 16V, 10%, 0603	MURATA, GRM188R61C104KA01D
2	1	C13	CAP, CER, 2.2 $\mu$ F, X5R, 16V, 10%, 0603	MURATA, GRM188R61C225KE15D
3	1	C1	CAP, CER, 1 $\mu$ F, X5R, 16V, 10%, 0603	MURATA, GRM188R61C105KA93D
4	1	R3	RES, 1.3k, 1/10W, 1%, 0603	VISHAY, CRCW06031K30FKEA
5	5	R1, R2, R5, R6, R7	RES, 10k, 1/16W, 1%, 0603	VISHAY, CRCW060310K0FKED
6	9	R4, R8, R9, R10, R11, R12, R13, R14, R15	RES, 0.0 $\Omega$ , 1/10W, 0603	VISHAY, CRCW06030000Z0EA
7	1	LED1	LED, GREEN, 0603	PANASONIC, LNJ326W83RA
8	4	TP1, TP2, TP3, TP4	TEST POINT TURRET, 0.094"	MILL-MAX, 2501-2-00-80-00-00-07-0
9	3	ASEL1, ASEL2, ASEL3	CONN, HEADER, 1x4, 0.1"	SULLINS, PRPC004SAAN-RC
10	1	WP	CONN, HEADER, 1x3, 0.1"	SULLINS, PRPC003SAAN-RC
11	4	WP, ASEL1, ASEL2, ASEL3	SHUNT JUMPER, 0.1"	3M, 969002-0000-DA
12	1	J1	CONN, HEADER, 2x6, 2MM	FCI, 98414-G06-12ULF
13	1	U4	IC SERIAL EEPROM, SOT-23-5	MICROCHIP, 24AA02T-I/OT
14	1	U1	SOCKET, CLAMSHELL, QFN	PLASTRONICS, 28QN50S16050-A
15	1	S1	SW SLIDE DPDT 6VDC 0.3A PCMNT	C&K COMPONENTS, JS202011CQN
16	4		STANDOFF, NYLON, SNAP-ON, 0.25" TALL	KEYSTONE, 8831

# SCHEMATIC DIAGRAM

# DEMO MANUAL DC2347A



REVISION HISTORY			
ECO	REV	DESCRIPTION	DATE
			XX-XX-XX

NOTES: UNLESS OTHERWISE SPECIFIED:  
 1. ALL RESISTORS ARE 1% 0603.  
 2. ALL CAPACITORS ARE 16V 0603

<b>CUSTOMER NOTICE</b>				1636 McCarthy Blvd Milpitas, CA 95035 Phone (408) 422-1000 Fax (408) 434-6668 www.linear.com	LTC CONFIDENTIAL FOR CUSTOMER USE ONLY
LINEAR TECHNOLOGY HAS MADE A BEST EFFORT TO DESIGN A CIRCUIT THAT MEETS CUSTOMER-SUPPLIED SPECIFICATIONS; HOWEVER, IT REMAINS THE CUSTOMER'S RESPONSIBILITY TO VERIFY PROPER AND RELIABLE OPERATION IN THE ACTUAL APPLICATION. COMPONENT SUBSTITUTION AND PRINTED CIRCUIT BOARD LAYOUT MAY SIGNIFICANTLY AFFECT CIRCUIT PERFORMANCE OR RELIABILITY. CONTACT LINEAR TECHNOLOGY APPLICATIONS ENGINEERING FOR ASSISTANCE.		<b>APPROVALS</b> PCB DES: N Enger APP ENG: N Enger		<b>TITLE:</b> PROGRAMMING BOARD FOR LTC2937 SUPERVISOR AND SIX CHANNEL SEQUENCER WITH EEPROM <b>SIZE:</b> IC NO. LTC2937 <b>B</b> DEMO CIRCUIT XXXX <b>REU:</b> 1	
THIS CIRCUIT IS PROPRIETARY TO LINEAR TECHNOLOGY AND SUPPLIED FOR USE WITH LINEAR TECHNOLOGY PARTS		SCALE = NONE	DATE: 1/9/2015 4:28:53 PM	SHEET: 1/1	



Information furnished by Linear Technology Corporation is believed to be accurate and reliable. However, no responsibility is assumed for its use. Linear Technology Corporation makes no representation that the interconnection of its circuits as described herein will not infringe on existing patent rights.

# DEMO MANUAL DC2347A

---

## DEMONSTRATION BOARD IMPORTANT NOTICE

Linear Technology Corporation (LTC) provides the enclosed product(s) under the following **AS IS** conditions:

This demonstration board (DEMO BOARD) kit being sold or provided by Linear Technology is intended for use for **ENGINEERING DEVELOPMENT OR EVALUATION PURPOSES ONLY** and is not provided by LTC for commercial use. As such, the DEMO BOARD herein may not be complete in terms of required design-, marketing-, and/or manufacturing-related protective considerations, including but not limited to product safety measures typically found in finished commercial goods. As a prototype, this product does not fall within the scope of the European Union directive on electromagnetic compatibility and therefore may or may not meet the technical requirements of the directive, or other regulations.

If this evaluation kit does not meet the specifications recited in the DEMO BOARD manual the kit may be returned within 30 days from the date of delivery for a full refund. **THE FOREGOING WARRANTY IS THE EXCLUSIVE WARRANTY MADE BY THE SELLER TO BUYER AND IS IN LIEU OF ALL OTHER WARRANTIES, EXPRESSED, IMPLIED, OR STATUTORY, INCLUDING ANY WARRANTY OF MERCHANTABILITY OR FITNESS FOR ANY PARTICULAR PURPOSE. EXCEPT TO THE EXTENT OF THIS INDEMNITY, NEITHER PARTY SHALL BE LIABLE TO THE OTHER FOR ANY INDIRECT, SPECIAL, INCIDENTAL, OR CONSEQUENTIAL DAMAGES.**

The user assumes all responsibility and liability for proper and safe handling of the goods. Further, the user releases LTC from all claims arising from the handling or use of the goods. Due to the open construction of the product, it is the user's responsibility to take any and all appropriate precautions with regard to electrostatic discharge. Also be aware that the products herein may not be regulatory compliant or agency certified (FCC, UL, CE, etc.).

No License is granted under any patent right or other intellectual property whatsoever. **LTC assumes no liability for applications assistance, customer product design, software performance, or infringement of patents or any other intellectual property rights of any kind.**

LTC currently services a variety of customers for products around the world, and therefore this transaction **is not exclusive**.

**Please read the DEMO BOARD manual prior to handling the product.** Persons handling this product must have electronics training and observe good laboratory practice standards. **Common sense is encouraged.**

This notice contains important safety information about temperatures and voltages. For further safety concerns, please contact a LTC application engineer.

Mailing Address:

Linear Technology  
1630 McCarthy Blvd.  
Milpitas, CA 95035

Copyright © 2004, Linear Technology Corporation