



Chipsmall Limited consists of a professional team with an average of over 10 year of expertise in the distribution of electronic components. Based in Hongkong, we have already established firm and mutual-benefit business relationships with customers from,Europe,America and south Asia,supplying obsolete and hard-to-find components to meet their specific needs.

With the principle of “Quality Parts,Customers Priority,Honest Operation,and Considerate Service”,our business mainly focus on the distribution of electronic components. Line cards we deal with include Microchip,ALPS,ROHM,Xilinx,Pulse,ON,Everlight and Freescale. Main products comprise IC,Modules,Potentiometer,IC Socket,Relay,Connector.Our parts cover such applications as commercial,industrial, and automotives areas.

We are looking forward to setting up business relationship with you and hope to provide you with the best service and solution. Let us make a better world for our industry!



Contact us

Tel: +86-755-8981 8866 Fax: +86-755-8427 6832

Email & Skype: info@chipsmall.com Web: www.chipsmall.com

Address: A1208, Overseas Decoration Building, #122 Zhenhua RD., Futian, Shenzhen, China



Shield Board for Use with DC2321A Dust Demo Board

DESCRIPTION

Demonstration circuit DC2510A is a shield board for use with the DC2321A Dust® application demo board. This board is designed to allow users to build their own custom application circuits directly on the DC2321A with access to all pins of the LTP5901-IPM Dust mote.

The board offers footprints of common sensor and IC packages as well as prototyping space for routing. The following footprints are included on the board:

TOP

- MSSOP-10 (x2)
- TS8 (x2)
- SOIC-20 (x2)
- DFN-20 (x2)

BOTTOM

- SOT-23 (x4)
- TSOT-23-8 (x2)
- SSOP-20 (x2)

Power rails and grids of copper pads (in both 2mm and 2.54mm pitch) form a solderable breadboard, and the IC footprints allow easy mounting of surface-mount packages. Each pin on the footprints and headers also connects to a copper-plated hole for easy wiring.

The headers on the board are designed to fit into the LTP5901-IPM header layout on the DC2321A. The long pins of the headers allow wiring below the board and give users a place to clip grabber leads.

The headers are also stackable, allowing multiple DC2510A boards to be connected vertically, all with access to the pins on the DC2321A. This allows a user to create different applications on multiple DC2510A boards and swap them out or combine them as desired.

Please refer to the DC2321A demo manual and LTP5901-IPM data sheet for operation information and input limits. This demo manual describes the system level functionality of this board and the various ways it can be used in early design prototyping.

Design files for this circuit board are available at <http://www.analog.com/DC2510A>

All registered trademarks and trademarks are the property of their respective owners.

BOARD PHOTO

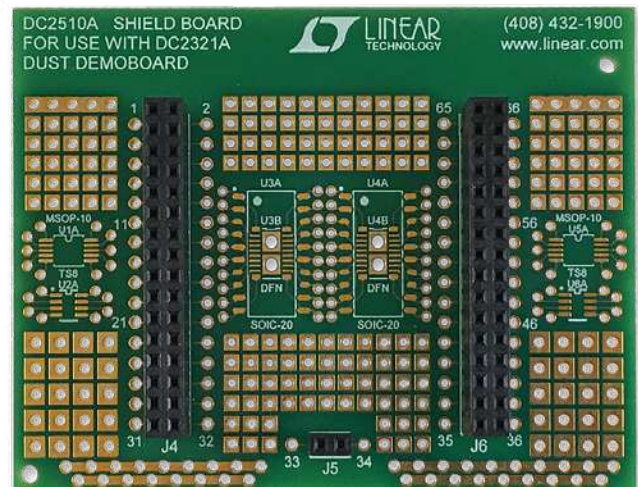
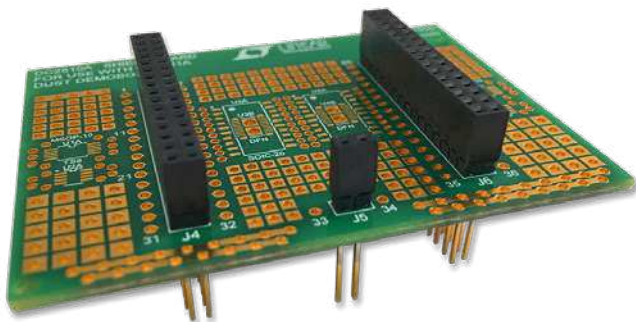


Figure 1. DC2510A

DEMO MANUAL DC2510A

ABSOLUTE MAXIMUM RATINGS

Supply Voltage on VSUPPLY	4.20V
Input Voltage on ADC Inputs	1.98V
Voltage on Any Digital I/O Pin	-0.3V to VSUPPLY + 0.3V

SPECIFICATIONS

PIN TYPE	PIN	PARAMETER	MIN	TYPICAL/ DEFAULT	MAX	UNITS
Power	VSUPPLY		2.1	3.3	3.76	V
I/O	ADCs	Input Voltage Range	0		1.8	V
		Low Input Voltage	-0.3		0.6	V
	GPIO, UART, I ² C, SPI	High Input Voltage	VSUPPLY -0.3		VSUPPLY +0.3	V
		Low Output Voltage			0.4	V
		High Output Voltage	VSUPPLY -0.3		VSUPPLY +0.3	V
		Pull-Up/Pull-Down Resistance		50		kΩ

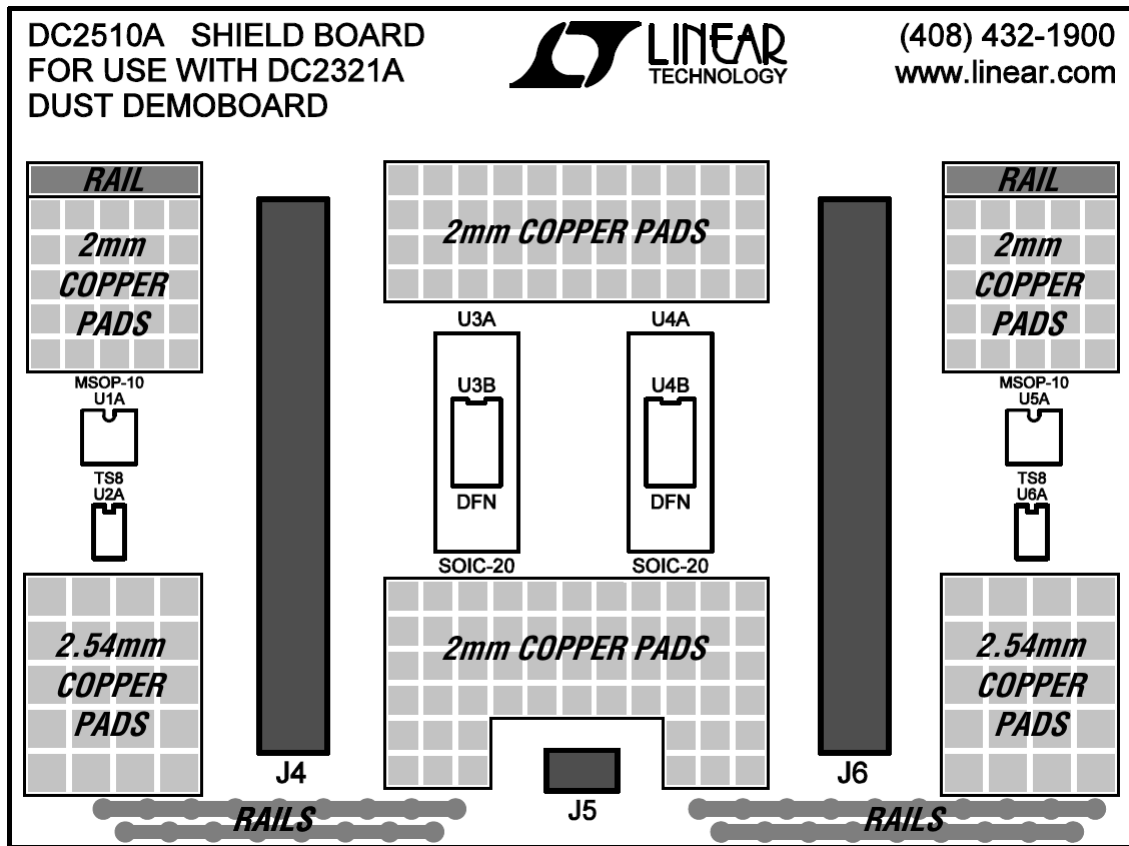


Figure 2. Board Layout Organization Diagram

SPECIFICATIONS

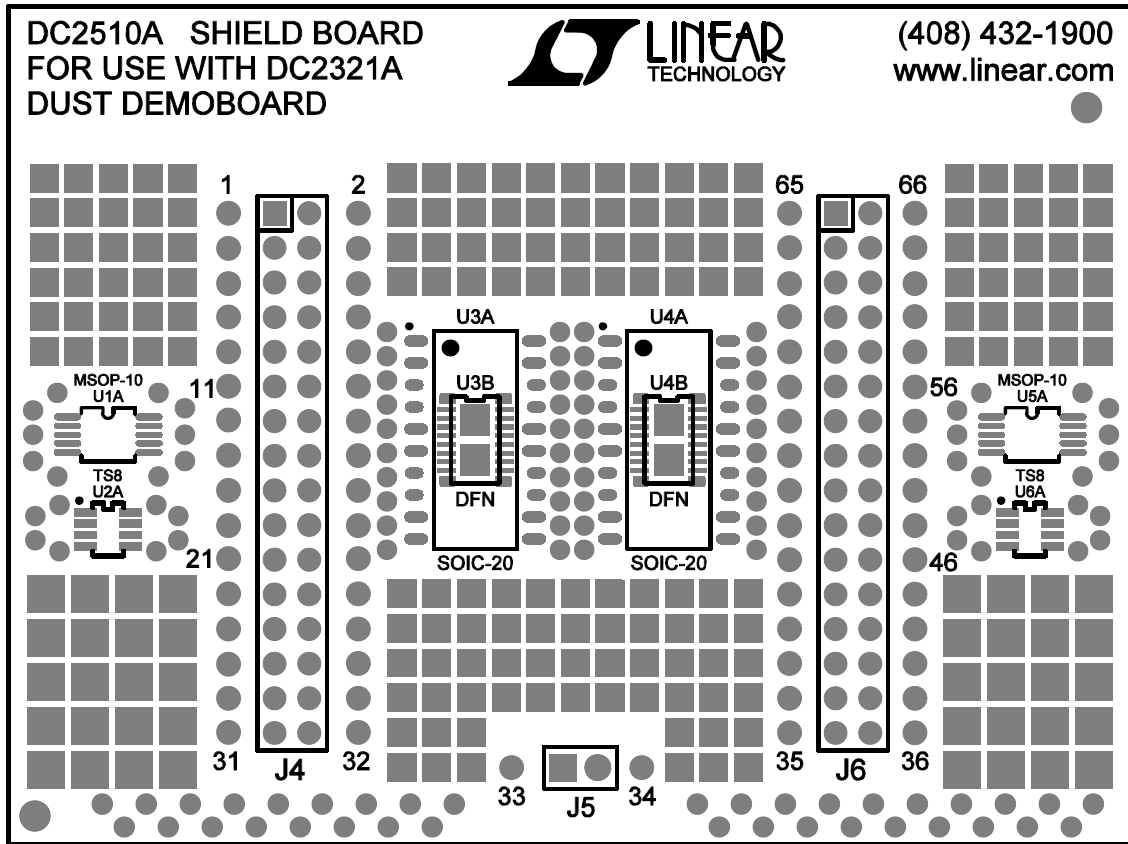


Figure 3. DC2510A Top Assembly Drawing

SPECIFICATIONS

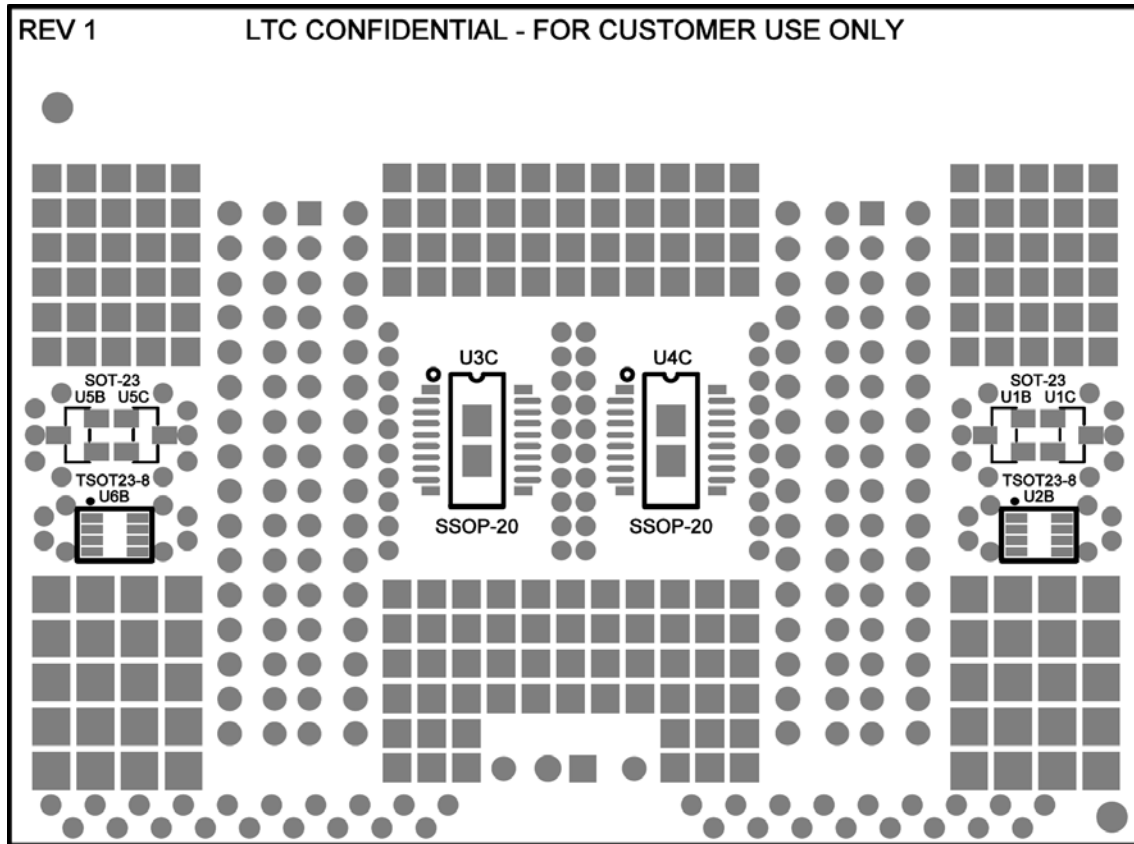


Figure 4. DC2510A Bottom Assembly Drawing

QUICK START PROCEDURE

Instructions

To use DC2510A, you will need to connect a sensor to the board. This device can be soldered onto the grid of copper pads, attached to one of the provided SMD footprints, or inserted into the headers directly (if it is a through-hole part such as a thermistor).

There are a few inputs and interfaces for receiving data:

1. UART
2. I²C
3. SPI
4. ADC (×4)
5. GPIO (×4 default, up to 18)

Table 1 shows which of these inputs can be read from the DC2321A GUI through the Mote Measurement Settings dialog. This allows users to start taking sensor measurements out-of-the-box without reprogramming the DC2321A. However, any of these inputs can be used if a custom program is written.

Some sensors can output a voltage that is suitable for ADC measurements (ADC abs max = 1.98V), or may have an integrated serial port. However, other sensors may require an additional IC to read the measurement and communicate with the mote.

General Notes

- The copper rails on DC2510A are not connected to anything by default, and must be wired by the user.
- SMD footprints on the top and bottom of the PCB share plated holes. Only one IC per each set of plated holes should be populated at any time.
- Do not connect USB power to any pin on the mote.
- Pull-up resistors should be pulled to VSUPPLY.
- Any input with a voltage applied when VSUPPLY is not powered can power the mote through a sneak path.

Combining Application Circuits

Because DC2510A is stackable, a user can make custom applications on several different boards and connect all of the boards together to combine the circuits. This can be useful if a user runs out of routing space on a board, or if an additional SMD footprint is needed.

Additionally, if a different GPIO pin is tied high on each of these boards, data from these circuits can be read from a single program which checks the state of a GPIO to determine if a particular sensor circuit is present.

SMD Soldering Instructions

The footprints for U3 and U4 allow ICs with GND paddles to be mounted using a soldering iron rather than a heat gun. The recommended procedure is as follows:

1. Place the IC onto the footprint as it will be soldered; solder the four corner pins into place on the copper pads.
2. Turn the board over and touch the soldering iron to both the paddle and the plated hole. Quickly apply solder to the junction.
3. Turn the board back to the original orientation and solder the rest of the pins.
4. Wire the paddle to its destination on the board.
5. Wire the pins to their destinations on the board.

QUICK START PROCEDURE

Table 1. Inputs and Interfaces Key

Pin Type	Pin Function	Readable Though GUI	Notes
Power	GND	-	-
	5VUSB	No	-
	3V3USB	No	-
	VSUPPLY	Yes	Abs Max is 4.20V
Serial Communication	UART	No	-
	I ² C	Yes	-
	SPI	No	Remove R1 on DC2321A to Free SS
Input/Output	ADC	Yes	Full-Scale Voltage is 1.8V, Abs Max is 1.98V
	GPIO	No	-

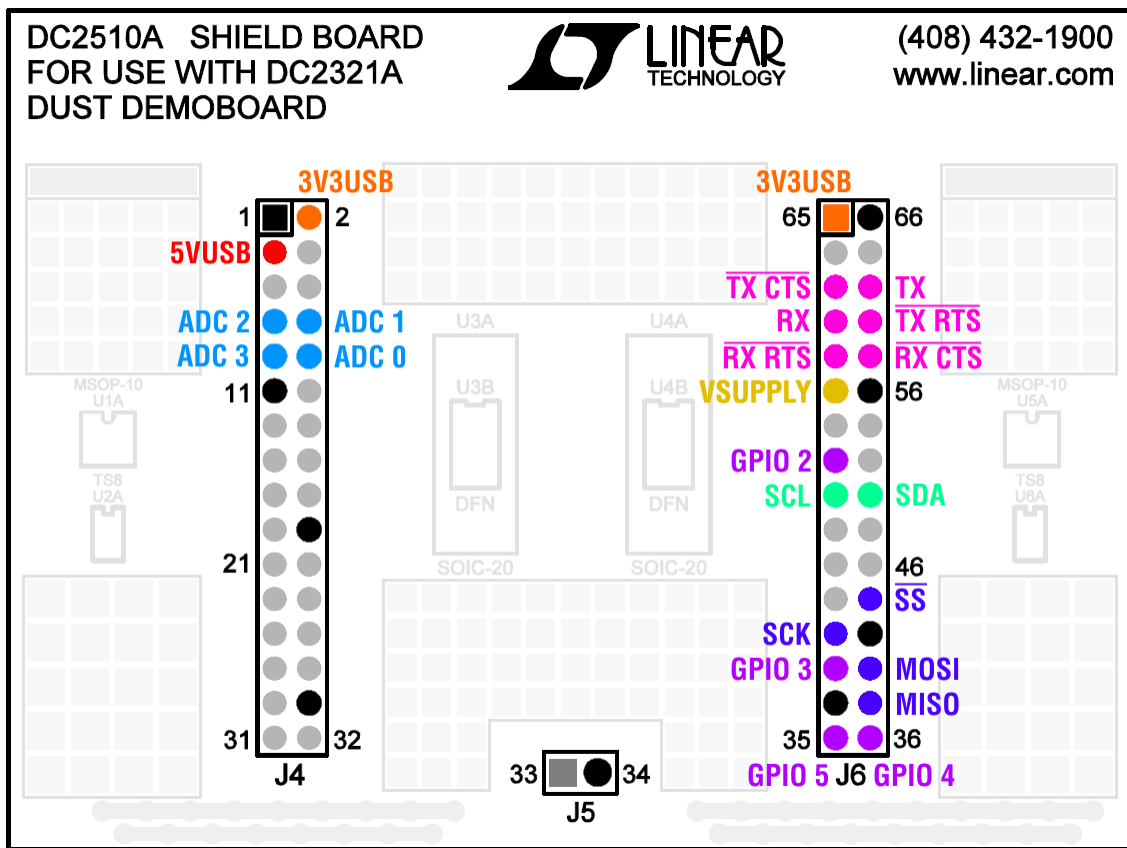


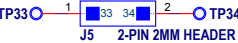
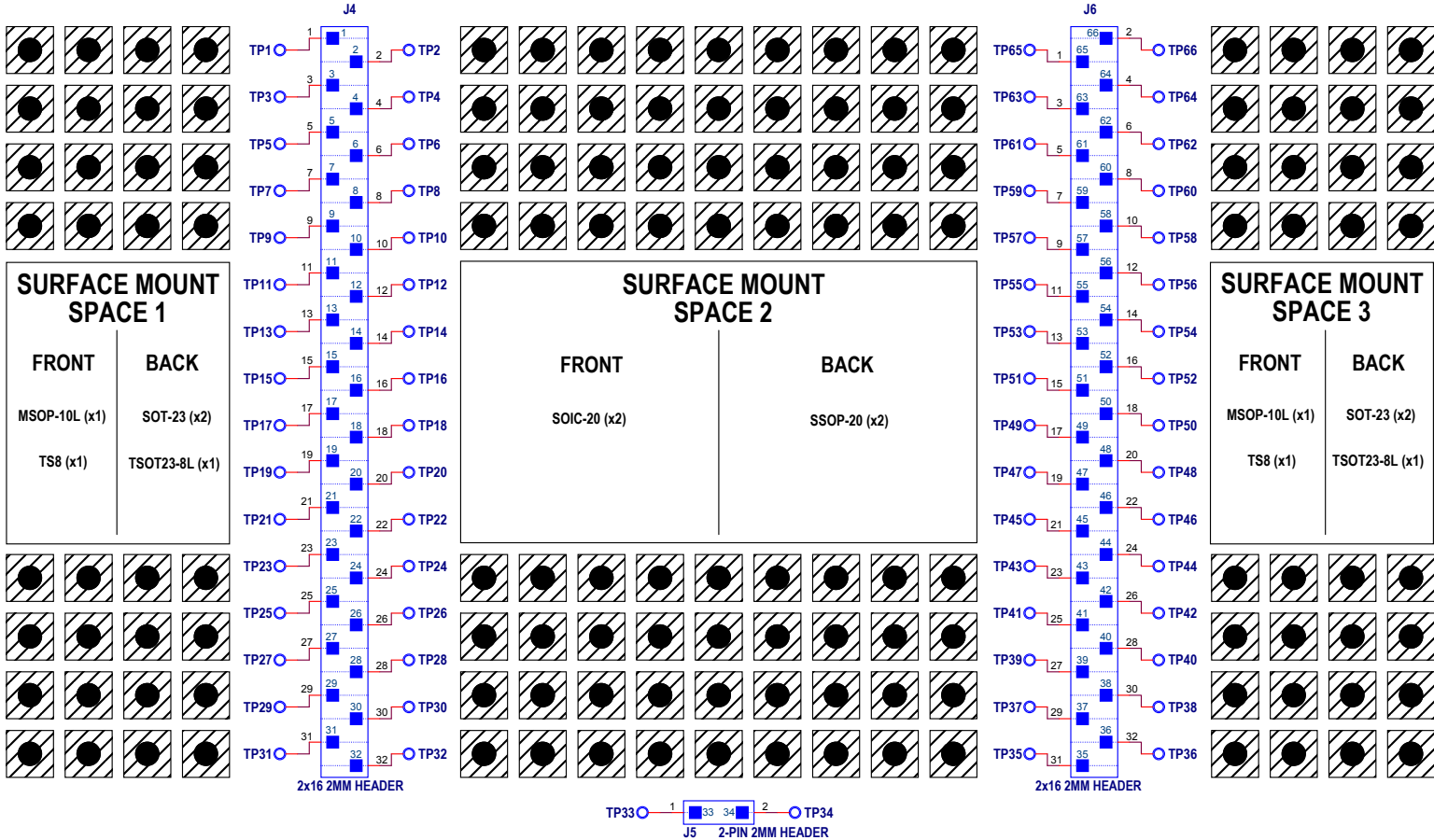
Figure 5. DC2321A Routing Guide

PARTS LIST

ITEM	QTY	REFERENCE	PART DESCRIPTION	MANUFACTURER/PART NUMBER
Required Circuit Components				
1	2	J4, J6	2×16, 2mm PITCH, VERTICAL STACKABLE SOCKET	SAMTEC, ESQT-116-02-GF-D-310
2	1	J5	2 PIN, 2mm PITCH, VERTICAL STACKABLE SOCKET	SAMTEC, ESQT-102-02-GF-S-310
3	1	---	FAB, PRINTED CIRCUIT BOARD	DEMO CIRCUIT 2510A-1

BOARD DIMENSIONS: 2.5" x 1.75"

REVISION HISTORY				
ECO	REV	DESCRIPTION	APPROVED	DATE
-	1	PRODUCTION	ZP	12 - 8 - 15



CUSTOMER NOTICE
 LINEAR TECHNOLOGY HAS MADE A BEST EFFORT TO DESIGN A CIRCUIT THAT MEETS CUSTOMER-SUPPLIED SPECIFICATIONS; HOWEVER, IT REMAINS THE CUSTOMER'S RESPONSIBILITY TO VERIFY PROPER AND RELIABLE OPERATION IN THE ACTUAL APPLICATION. COMPONENT SUBSTITUTION AND PRINTED CIRCUIT BOARD LAYOUT MAY SIGNIFICANTLY AFFECT CIRCUIT PERFORMANCE OR RELIABILITY. CONTACT LINEAR TECHNOLOGY APPLICATIONS ENGINEERING FOR ASSISTANCE.

THIS CIRCUIT IS PROPRIETARY TO LINEAR TECHNOLOGY AND SUPPLIED FOR USE WITH LINEAR TECHNOLOGY PARTS.

APPROVALS

PCB DES.	NC
APP ENG.	ZP

SCALE = NONE



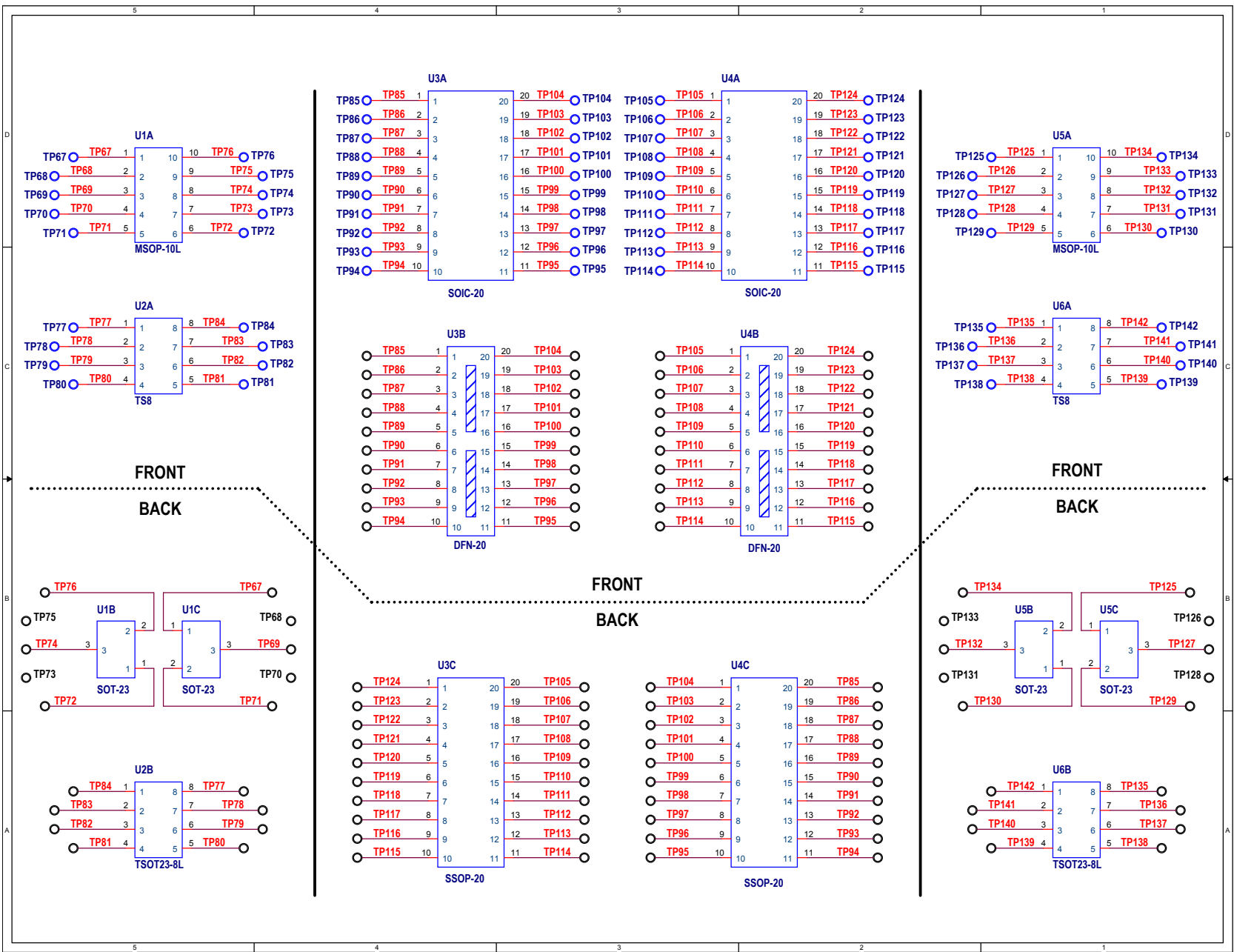
1630 McCarthy Blvd.
 Milpitas, CA 95035
 Phone: (408)432-1900 www.linear.com
 Fax: (408)434-0507
 LTC Confidential-For Customer Use Only

TITLE: SCHEMATIC
DC2510A: SHIELD BOARD
 FOR USE WITH DC2321A DUST DEMOBOARD

SIZE: N/A IC NO. **DEMO CIRCUIT 2510A** REV. 1

DATE: 12 - 8 - 15 SHEET 1 OF 1

SCHEMATIC DIAGRAM



Information furnished by Analog Devices is believed to be accurate and reliable. However, no responsibility is assumed by Analog Devices for its use, nor for any infringements of patents or other rights of third parties that may result from its use. Specifications subject to change without notice. No license is granted by implication or otherwise under any patent or patent rights of Analog Devices.



ESD Caution

ESD (electrostatic discharge) sensitive device. Charged devices and circuit boards can discharge without detection. Although this product features patented or proprietary protection circuitry, damage may occur on devices subjected to high energy ESD. Therefore, proper ESD precautions should be taken to avoid performance degradation or loss of functionality.

Legal Terms and Conditions

By using the evaluation board discussed herein (together with any tools, components documentation or support materials, the "Evaluation Board"), you are agreeing to be bound by the terms and conditions set forth below ("Agreement") unless you have purchased the Evaluation Board, in which case the Analog Devices Standard Terms and Conditions of Sale shall govern. Do not use the Evaluation Board until you have read and agreed to the Agreement. Your use of the Evaluation Board shall signify your acceptance of the Agreement. This Agreement is made by and between you ("Customer") and Analog Devices, Inc. ("ADI"), with its principal place of business at One Technology Way, Norwood, MA 02062, USA. Subject to the terms and conditions of the Agreement, ADI hereby grants to Customer a free, limited, personal, temporary, non-exclusive, non-sublicensable, non-transferable license to use the Evaluation Board FOR EVALUATION PURPOSES ONLY. Customer understands and agrees that the Evaluation Board is provided for the sole and exclusive purpose referenced above, and agrees not to use the Evaluation Board for any other purpose. Furthermore, the license granted is expressly made subject to the following additional limitations: Customer shall not (i) rent, lease, display, sell, transfer, assign, sublicense, or distribute the Evaluation Board; and (ii) permit any Third Party to access the Evaluation Board. As used herein, the term "Third Party" includes any entity other than ADI, Customer, their employees, affiliates and in-house consultants. The Evaluation Board is NOT sold to Customer; all rights not expressly granted herein, including ownership of the Evaluation Board, are reserved by ADI. CONFIDENTIALITY. This Agreement and the Evaluation Board shall all be considered the confidential and proprietary information of ADI. Customer may not disclose or transfer any portion of the Evaluation Board to any other party for any reason. Upon discontinuation of use of the Evaluation Board or termination of this Agreement, Customer agrees to promptly return the Evaluation Board to ADI. ADDITIONAL RESTRICTIONS. Customer may not disassemble, decompile or reverse engineer chips on the Evaluation Board. Customer shall inform ADI of any occurred damages or any modifications or alterations it makes to the Evaluation Board, including but not limited to soldering or any other activity that affects the material content of the Evaluation Board. Modifications to the Evaluation Board must comply with applicable law, including but not limited to the RoHS Directive. TERMINATION. ADI may terminate this Agreement at any time upon giving written notice to Customer. Customer agrees to return to ADI the Evaluation Board at that time. LIMITATION OF LIABILITY. THE EVALUATION BOARD PROVIDED HEREUNDER IS PROVIDED "AS IS" AND ADI MAKES NO WARRANTIES OR REPRESENTATIONS OF ANY KIND WITH RESPECT TO IT. ADI SPECIFICALLY DISCLAIMS ANY REPRESENTATIONS, ENDORSEMENTS, GUARANTEES, OR WARRANTIES, EXPRESS OR IMPLIED, RELATED TO THE EVALUATION BOARD INCLUDING, BUT NOT LIMITED TO, THE IMPLIED WARRANTY OF MERCHANTABILITY, TITLE, FITNESS FOR A PARTICULAR PURPOSE OR NON-INFRINGEMENT OF INTELLECTUAL PROPERTY RIGHTS. IN NO EVENT WILL ADI AND ITS LICENSORS BE LIABLE FOR ANY INCIDENTAL, SPECIAL, INDIRECT, OR CONSEQUENTIAL DAMAGES RESULTING FROM CUSTOMER'S POSSESSION OR USE OF THE EVALUATION BOARD, INCLUDING BUT NOT LIMITED TO LOST PROFITS, DELAY COSTS, LABOR COSTS OR LOSS OF GOODWILL. ADI'S TOTAL LIABILITY FROM ANY AND ALL CAUSES SHALL BE LIMITED TO THE AMOUNT OF ONE HUNDRED US DOLLARS (\$100.00). EXPORT. Customer agrees that it will not directly or indirectly export the Evaluation Board to another country, and that it will comply with all applicable United States federal laws and regulations relating to exports. GOVERNING LAW. This Agreement shall be governed by and construed in accordance with the substantive laws of the Commonwealth of Massachusetts (excluding conflict of law rules). Any legal action regarding this Agreement will be heard in the state or federal courts having jurisdiction in Suffolk County, Massachusetts, and Customer hereby submits to the personal jurisdiction and venue of such courts. The United Nations Convention on Contracts for the International Sale of Goods shall not apply to this Agreement and is expressly disclaimed.