



Chipsmall Limited consists of a professional team with an average of over 10 year of expertise in the distribution of electronic components. Based in Hongkong, we have already established firm and mutual-benefit business relationships with customers from,Europe,America and south Asia,supplying obsolete and hard-to-find components to meet their specific needs.

With the principle of “Quality Parts,Customers Priority,Honest Operation,and Considerate Service”,our business mainly focus on the distribution of electronic components. Line cards we deal with include Microchip,ALPS,ROHM,Xilinx,Pulse,ON,Everlight and Freescale. Main products comprise IC,Modules,Potentiometer,IC Socket,Relay,Connector.Our parts cover such applications as commercial,industrial, and automotives areas.

We are looking forward to setting up business relationship with you and hope to provide you with the best service and solution. Let us make a better world for our industry!



## Contact us

Tel: +86-755-8981 8866 Fax: +86-755-8427 6832

Email & Skype: info@chipsmall.com Web: www.chipsmall.com

Address: A1208, Overseas Decoration Building, #122 Zhenhua RD., Futian, Shenzhen, China

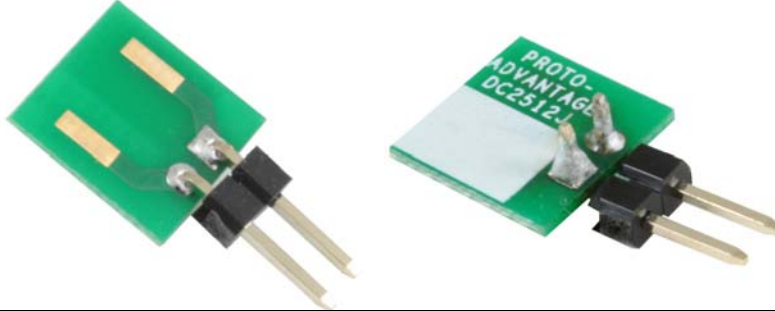


# DC2512J-10X *Proto Advantage*

Datasheet revision 1.0

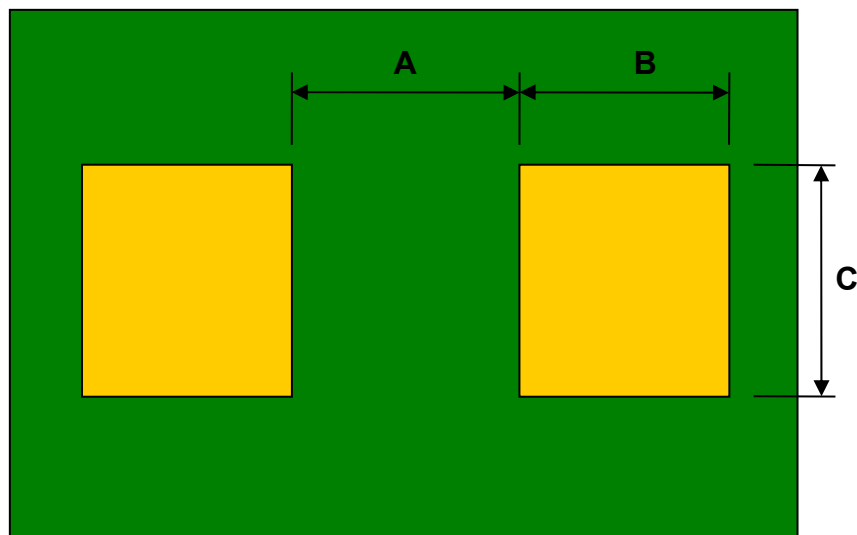
[www.Proto-Advantage.com](http://www.Proto-Advantage.com)

## 10 pack: Discrete to TH Adapters – SM/TH/J pins



DIMENSIONS						
Part Numbers	mm			inches		
	A	B	C	A	B	C
DC0402S / DC0402T / DC0402J	0.25	0.65	0.65	0.010	0.026	0.026
DC0603S / DC0603T / DC0603J	0.70	0.90	1.00	0.028	0.035	0.039
DC0805S / DC0805T / DC0805J	1.05	0.95	1.40	0.041	0.037	0.055
DC1206S / DC1206T / DC1206J	2.05	1.05	1.80	0.081	0.041	0.071
DC1210S / DC1210T / DC1210J	1.90	1.10	2.70	0.075	0.043	0.106
DC1411S / DC1411T / DC1411J	1.10	1.80	2.25	0.043	0.071	0.089
DC1813S / DC1813T / DC1813J	2.70	1.40	3.40	0.106	0.055	0.134
DC2010S / DC2010T / DC2010J	3.45	1.25	2.70	0.136	0.049	0.106
DC2220S / DC2220T / DC2220J	3.75	1.55	5.40	0.148	0.061	0.213
DC2413S / DC2413T / DC2413J	2.60	2.25	2.30	0.102	0.089	0.091
DC2512S / DC2512T / <b>DC2512J</b>	<b>4.85</b>	<b>1.25</b>	<b>3.40</b>	<b>0.191</b>	<b>0.049</b>	<b>0.134</b>
DC2917S / DC2917T / DC2917J	4.15	2.05	4.60	0.163	0.081	0.181
DC2924S / DC2924T / DC2924J	3.85	2.35	4.15	0.152	0.093	0.163

Top View (SMD Footprint)



(Representative drawing only - not to scale)