



Chipsmall Limited consists of a professional team with an average of over 10 year of expertise in the distribution of electronic components. Based in Hongkong, we have already established firm and mutual-benefit business relationships with customers from,Europe,America and south Asia,supplying obsolete and hard-to-find components to meet their specific needs.

With the principle of “Quality Parts,Customers Priority,Honest Operation,and Considerate Service”,our business mainly focus on the distribution of electronic components. Line cards we deal with include Microchip,ALPS,ROHM,Xilinx,Pulse,ON,Everlight and Freescale. Main products comprise IC,Modules,Potentiometer,IC Socket,Relay,Connector.Our parts cover such applications as commercial,industrial, and automotives areas.

We are looking forward to setting up business relationship with you and hope to provide you with the best service and solution. Let us make a better world for our industry!



## Contact us

Tel: +86-755-8981 8866 Fax: +86-755-8427 6832

Email & Skype: info@chipsmall.com Web: www.chipsmall.com

Address: A1208, Overseas Decoration Building, #122 Zhenhua RD., Futian, Shenzhen, China



## DESCRIPTION

Demonstration circuit 534 is a fast transient response, very low dropout linear regulator featuring the LT3150 linear regulator. The DC534 generates fixed output voltages of 1.2V, 1.5V, and 1.8V, and is capable of delivering 4A (max.) of output current. With the LT3150 driving external N-channel MOSFETs as source followers, the DC534 can produce very fast transient response. The proper selection of the  $R_{ds(on)}$  of the MOSFETs allows

dropout voltages below 300 mV. These capabilities, plus its ability of maintaining stable operation with ceramic output capacitors, make the DC534 voltage regulator ideally suited for low  $V_{in}$  to  $V_{out}$  applications, such as microprocessor power supplies.

**Design files for this circuit board are available. Call the LTC factory.**

**Table 1. Performance Summary**

PARAMETER	CONDITION	VALUE
Minimum Input Voltage		1.1V
Maximum Input Voltage		10V
$V_{OUT1}$	$V_{IN} = 1.5V, I_{OUT1} = 0A \text{ to } 4A$	1.2V $\pm 2\%$
$V_{OUT2}$	$V_{IN} = 1.8V, I_{OUT2} = 0A \text{ to } 4A$	1.5V $\pm 2\%$
$V_{OUT3}$	$V_{IN} = 2.5V, I_{OUT3} = 0A \text{ to } 1.7A$	1.8V $\pm 2\%$
Typical Output Ripple	$I_{OUT(MAX)}$	10mV <sub>P-P</sub>

## QUICK START PROCEDURE

Demonstration circuit 534 is easy to set up to evaluate the performance of the LT3150. Refer to Figure 1 for proper measurement equipment setup and follow the procedure below:

**NOTE:** When measuring the input or output voltage ripple, care must be taken to avoid a long ground lead on the oscilloscope probe. Measure the input or output voltage ripple by touching the probe tip directly across the  $V_{IN1}$  or  $V_{OUT}$  and GND terminals. See Figure 2 for proper scope probe technique.

1. Connect the input power supply and voltmeter to the  $V_{IN1}$  and GND terminals on the right side of the board.
2. Connect the load and voltmeter between the  $V_{OUT}$  and GND terminals on the right side of the board.

3. For oscilloscope observations, connect a BNC cable from the oscilloscope to connector J1, located on the right side of the board.
4. Before proceeding to test, set the output voltage to 1.2V, using the Output Voltage Table on the schematic.
5. Apply 1.5V across  $V_{IN}$  (to GND) with 100mA of load current. Measure  $V_{OUT}$ ; it should be 1.23V  $\pm 1\%$  (1.218V to 1.242V).
6. Increase the load current to 4A. Measure  $V_{OUT}$  again; it should be 1.22V  $\pm 2\%$  (1.205V to 1.255V). When finished, return  $I_{OUT}$  to 100mA.
7. Increase the input voltage to 1.8V. Change the jumpers for an output voltage of 1.5V (again see the Output Voltage Table below). Measure  $V_{OUT}$ ; it should be 1.5  $\pm 1\%$  (1.485V to 1.515V).

# QUICK START GUIDE FOR DEMONSTRATION CIRCUIT 534

## LOW VOLTAGE LDO LINEAR REGULATOR

8. Increase the load current to 4A. Measure  $V_{OUT}$  again; it should be  $1.5V \pm 2\%$  (1.470V to 1.530V). When finished, return  $I_{OUT}$  to 100mA.
9. Increase the input voltage to 2.5V. Change the jumpers for an output voltage of 1.8V (again see the Output Voltage Table below). Measure  $V_{OUT}$ ; it should be  $1.8 \pm 1\%$  (1.782V to 1.818V).
10. Increase the load current to 1.7A. Measure  $V_{OUT}$  again; it should be  $1.8V \pm 2\%$  (1.764V to 1.836V). When finished, return  $I_{OUT}$  to 100mA.

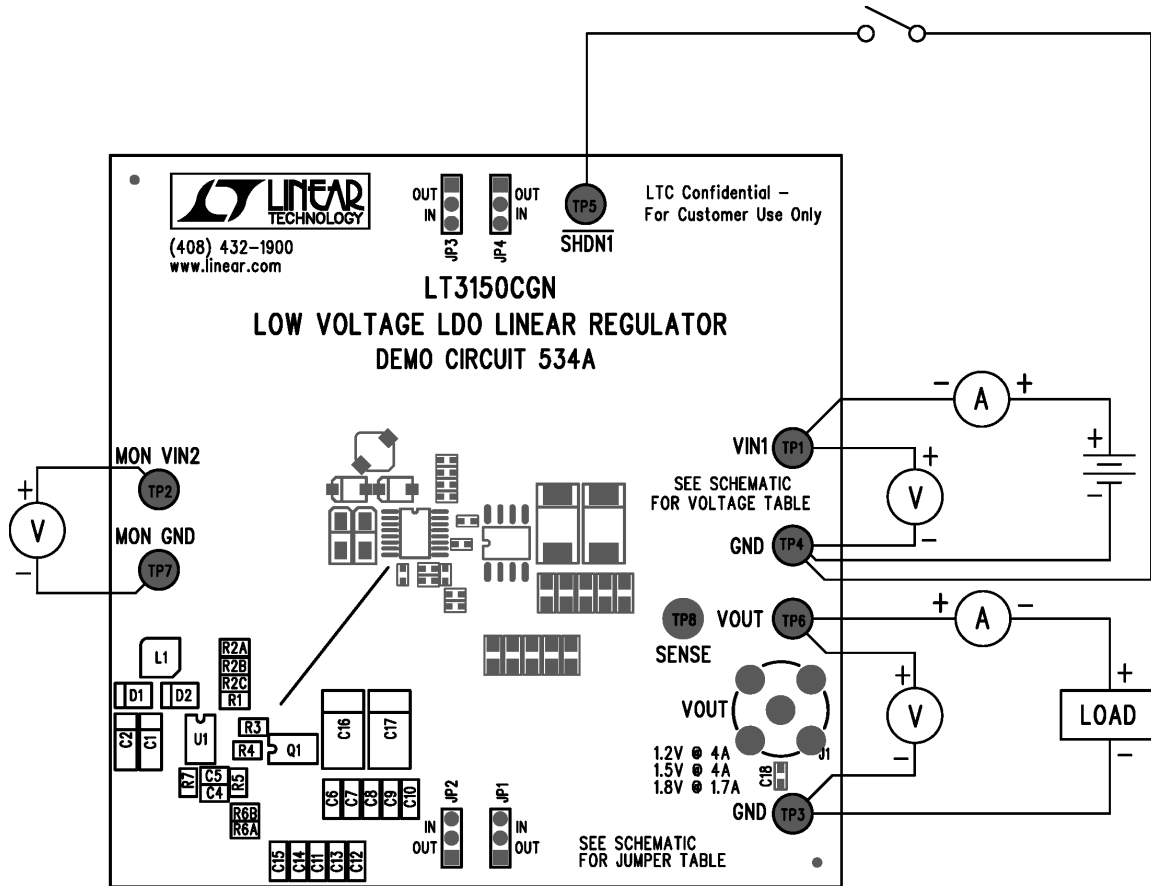


Figure 1. Proper Measurement Equipment Setup

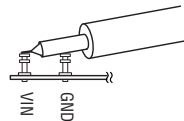
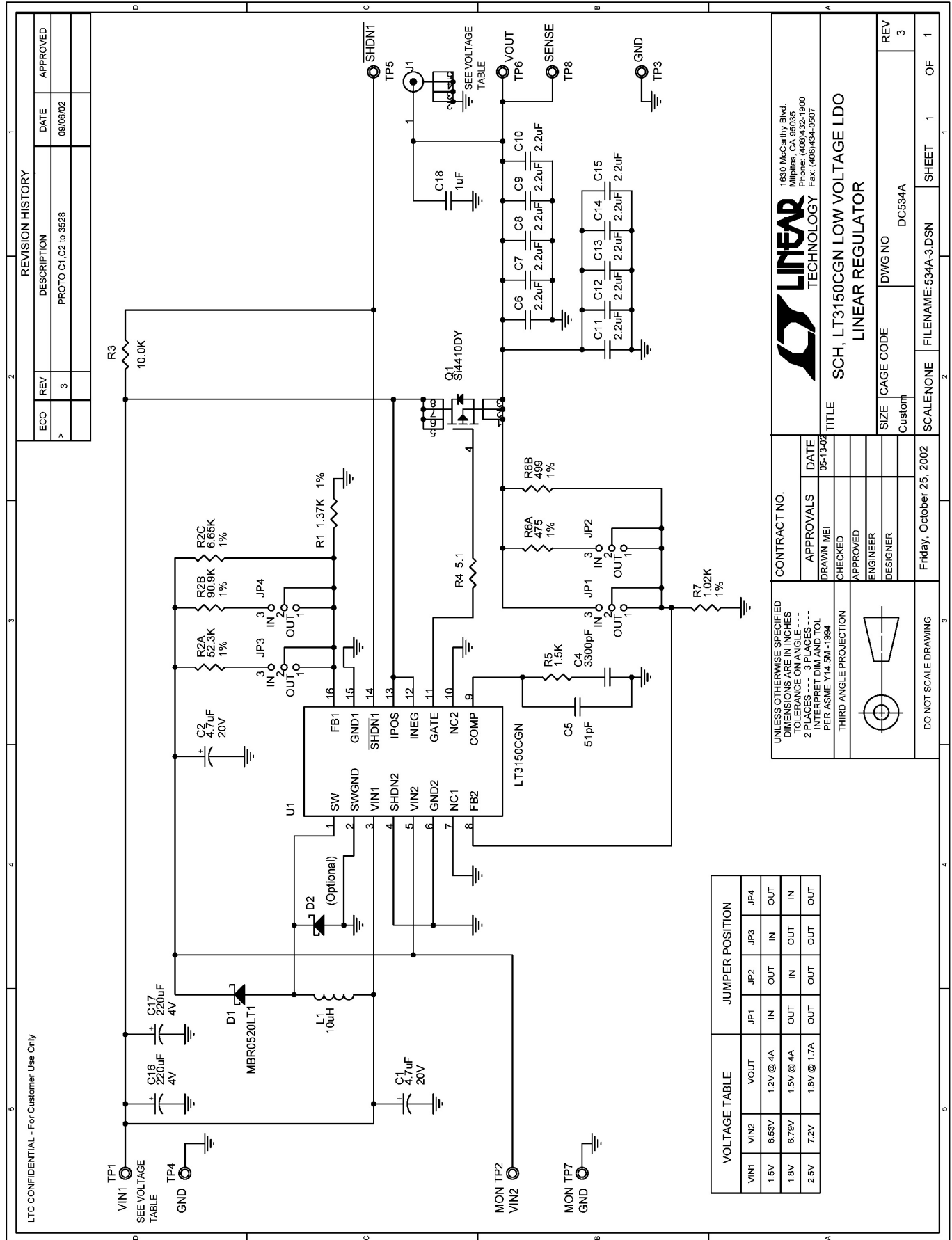


Figure 2. Measuring Input or Output Ripple

# QUICK START GUIDE FOR DEMONSTRATION CIRCUIT 534

## LOW VOLTAGE LDO LINEAR REGULATOR



**REVISION HISTORY**

ECO	REV	DESCRIPTION	DATE	APPROVED
>	3	PROTO C1, C2 to 3628	09/05/02	

**CONTRACT NO.**

APPROVALS	DATE
DRAWN MEI	05-13-02
CHECKED	
APPROVED	
ENGINEER	
DESIGNER	

**UNLESS OTHERWISE SPECIFIED DIMENSIONS ARE IN INCHES - TOLERANCE ON ANGLE - - - 2 INTERPRET ON PLAN - - - PER ASME Y14.5M-1994**

**THIRD ANGLE PROJECTION**

**DO NOT SCALE DRAWING**

**LINEAR TECHNOLOGY**

1630 McCarthy Blvd.  
Milpitas, CA 95035  
Phone: (408)432-1900  
Fax: (408)434-0507

**SCH, LT3150CGN LOW VOLTAGE LDO LINEAR REGULATOR**

SIZE (CAGE CODE) DWG NO DC534A  
Custom

SCALE NONE FILENAME: 534A\_3.DSN SHEET 1 OF 1

LTC CONFIDENTIAL - For Customer Use Only

