



Chipsmall Limited consists of a professional team with an average of over 10 year of expertise in the distribution of electronic components. Based in Hongkong, we have already established firm and mutual-benefit business relationships with customers from,Europe,America and south Asia,supplying obsolete and hard-to-find components to meet their specific needs.

With the principle of "Quality Parts,Customers Priority,Honest Operation,and Considerate Service",our business mainly focus on the distribution of electronic components. Line cards we deal with include Microchip,ALPS,ROHM,Xilinx,Pulse,ON,Everlight and Freescale. Main products comprise IC,Modules,Potentiometer,IC Socket,Relay,Connector.Our parts cover such applications as commercial,industrial, and automotives areas.

We are looking forward to setting up business relationship with you and hope to provide you with the best service and solution. Let us make a better world for our industry!



Contact us

Tel: +86-755-8981 8866 Fax: +86-755-8427 6832

Email & Skype: info@chipsmall.com Web: www.chipsmall.com

Address: A1208, Overseas Decoration Building, #122 Zhenhua RD., Futian, Shenzhen, China



DESCRIPTION

Demonstration circuit 623 is a step-down (buck) regulator, using the LTC[®]3801 monolithic controller. The DC623 has an input voltage range of 2.5V to 9.8V and is capable of providing 1A at an output voltage of 2.5V from a single Li-Ion cell. The DC623 highlights the capabilities of the LTC3801, a constant frequency step-down DC-to-DC controller that comes in a tiny SOT-23 package and runs off extremely low quiescent currents. The LTC3801 uses a current mode PWM architecture to drive an external P-channel power

MOSFET in a buck regulator application. The result is a high performance power supply that is ideal for cell phones and other portable electronics operating from one or two Li-ion cell. Due to the use of surface mount components, the DC623 is a highly efficient power supply for use in very small spaces.

Design files for this circuit board are available. Call the LTC factory.

LTC is a registered trademark of Linear Technology Corporation.

Table 1. Performance Summary (T_A = 25°C)

PARAMETER	CONDITION	VALUE
Minimum Input Voltage		2.5V
Maximum Input Voltage		9.8V
Output Voltage	V _{IN} = 2.5V to 9.8V, I _{OUT} = 0A to 1A	2.5V ±5%
Typical Output Ripple	V _{IN} = 4.2V, I _{OUT} = 600mA (20MHz BW)	100mV _{P-P}
Typical Supply Current	Normal	V _{IN} = 4.2V
	Sleep	V _{IN} = 4.2V
	Shutdown	V _{IN} = 4.2V, I _{th/Run} =0V
Maximum Output Current	V _{IN} = 4.2V, V _{OUT} = 2.5V	1A (min)
Typical Load Regulation	V _{IN} = 4.2V, 100mA ≤ I _{OUT} ≤ 1A	1%

QUICK START PROCEDURE

Demonstration circuit 623 is easy to set up to evaluate the performance of the LTC3801. Refer to Figure 1 for proper measurement equipment setup and follow the procedure below:

NOTE: When measuring the input or output voltage ripple, care must be taken to avoid a long ground lead on the oscilloscope probe. Measure the input or output voltage ripple by touching the probe tip directly across the V_{IN} or V_{OUT} and GND terminals. See Figure 2 for proper scope probe technique.

1. Turn on the input power supply, set to 5V, with no load on the output. Measure V_{OUT}; it should be 2.5V ±3% (2.425V to 2.575V).
2. Vary the load current from no load to 1A. The output voltage should be within a tolerance of ±4% (2.4V and 2.6V).
3. Vary the input voltage from 2.7V to 9.8V. The output voltage should be within ±5% tolerance (2.375V and 2.625V).

QUICK START GUIDE FOR DEMONSTRATION CIRCUIT 623

550KHZ MICROPPOWER STEP-DOWN DC/DC CONTROLLER

4. With the load current at 1A, measure the output ripple voltage; it should measure less than 100 mVAC.
5. Observe the voltage waveform at the switch node (pin); the switching frequency should be between 500kHz and 650kHz ($T = 2 \mu\text{s}$ and $1.5 \mu\text{s}$).
6. To shut down the circuit, connect the RUN turret to ground (GND).

When finished, disconnect the power.

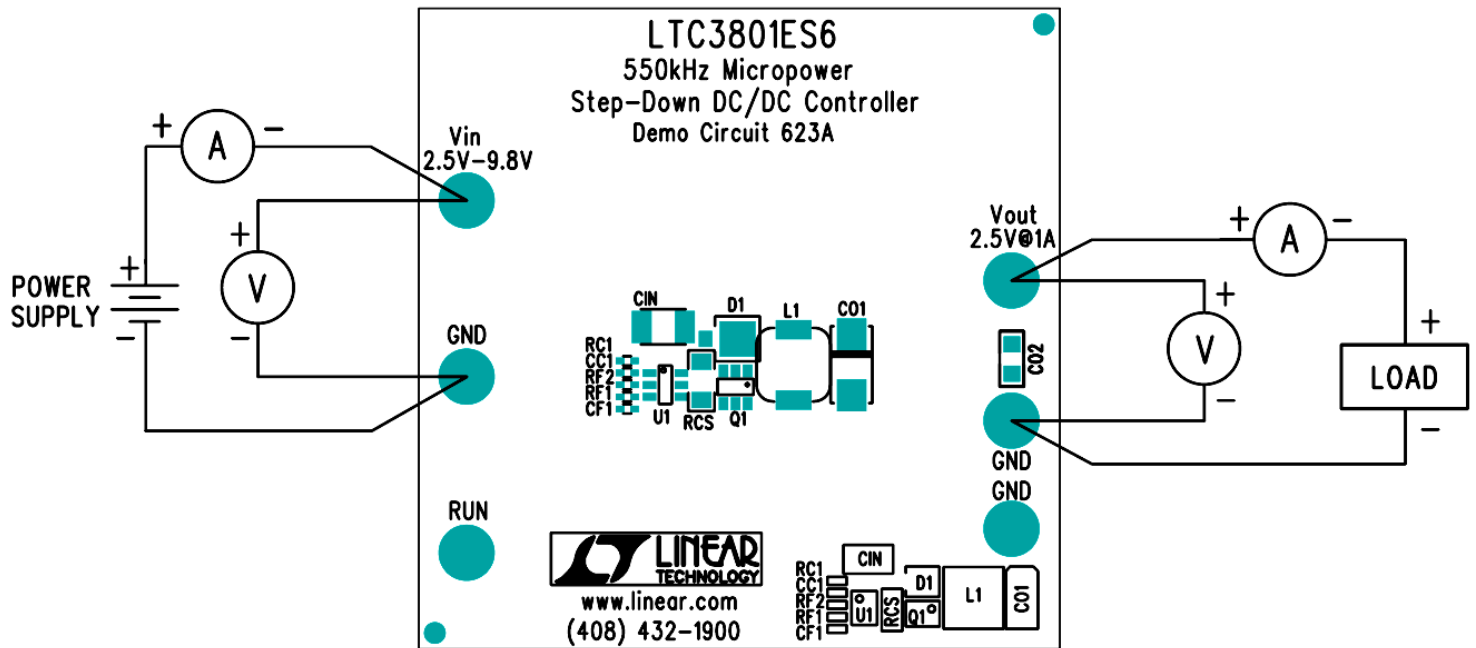


Figure 1. Proper Measurement Equipment Setup

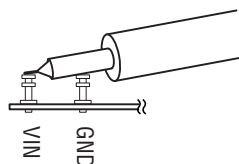
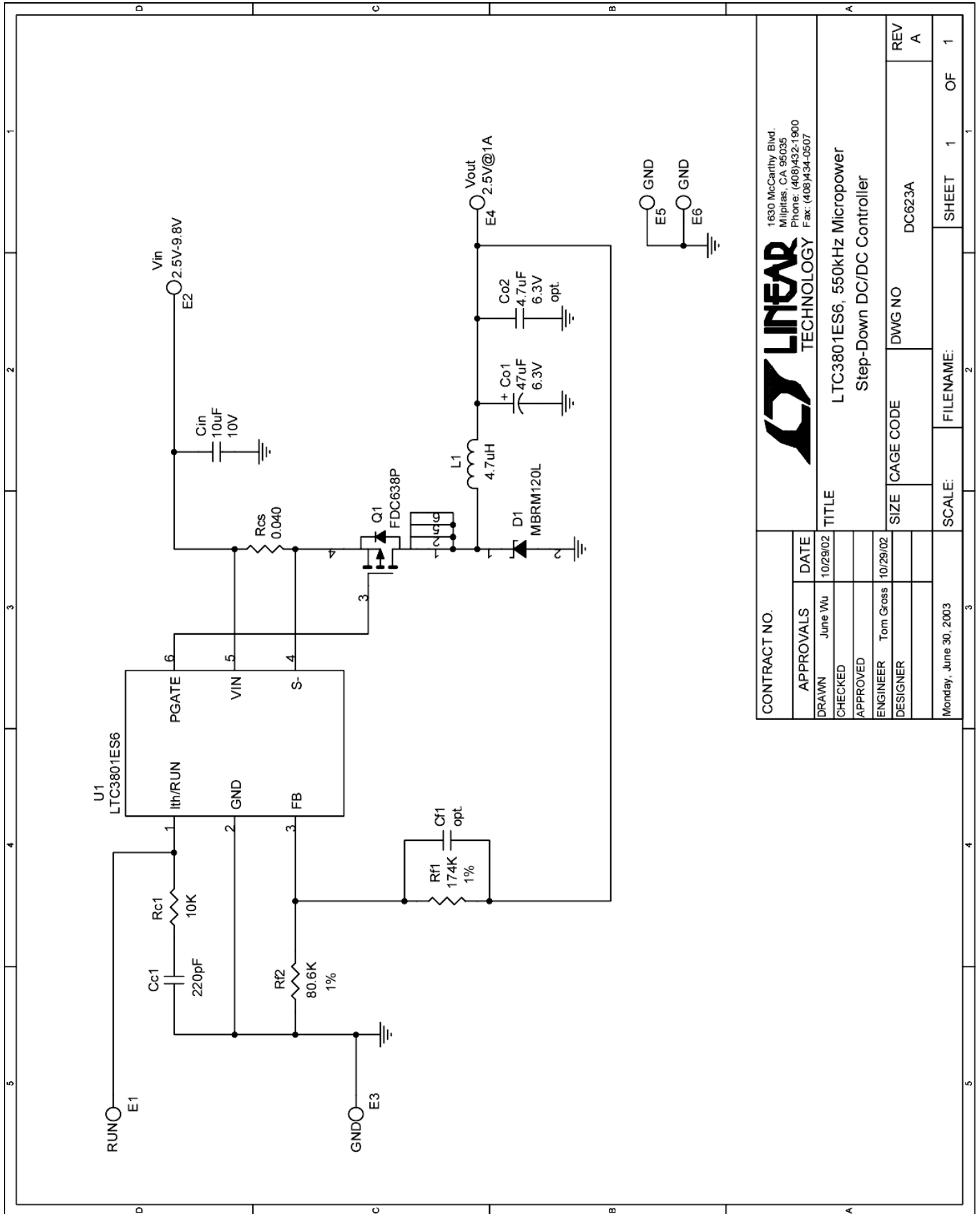


Figure 2. Measuring Input or Output Ripple

QUICK START GUIDE FOR DEMONSTRATION CIRCUIT 623

550KHZ MICROPOWER STEP-DOWN DC/DC CONTROLLER



CONTRACT NO.		DATE	
APPROVALS	June Wu	10/29/02	
DRAWN	June Wu	10/29/02	
CHECKED			
APPROVED	Tom Gross	10/29/02	
ENGINEER	Tom Gross		
DESIGNER			
Monday, June 30, 2003		SCALE:	FILENAME:
		SHEET	OF
		1	1

1630 McCarthy Blvd.
Milpitas, CA 95035
Phone: (408)432-1900
Fax: (408)434-0507

LINEAR
TECHNOLOGY

LTC3801ES6, 550kHz Micropower
Step-Down DC/DC Controller

TITLE

SIZE CAGE CODE DWG NO

DC623A

REV A