



Chipsmall Limited consists of a professional team with an average of over 10 year of expertise in the distribution of electronic components. Based in Hongkong, we have already established firm and mutual-benefit business relationships with customers from,Europe,America and south Asia,supplying obsolete and hard-to-find components to meet their specific needs.

With the principle of “Quality Parts,Customers Priority,Honest Operation,and Considerate Service”,our business mainly focus on the distribution of electronic components. Line cards we deal with include Microchip,ALPS,ROHM,Xilinx,Pulse,ON,Everlight and Freescale. Main products comprise IC,Modules,Potentiometer,IC Socket,Relay,Connector.Our parts cover such applications as commercial,industrial, and automotives areas.

We are looking forward to setting up business relationship with you and hope to provide you with the best service and solution. Let us make a better world for our industry!



Contact us

Tel: +86-755-8981 8866 Fax: +86-755-8427 6832

Email & Skype: info@chipsmall.com Web: www.chipsmall.com

Address: A1208, Overseas Decoration Building, #122 Zhenhua RD., Futian, Shenzhen, China



DESCRIPTION

Demonstration circuit 882 is a small size, low profile, low cost and high efficiency synchronous step-down DC/DC converter featuring the LTC3809EDD-1 controller. The demo board is capable of providing 2A output current with 2.75V to 9.8V input range. Burst mode/Pulse skipping/Forced continuous operation is selectable. The constant frequency current mode architecture with MOSFET V_{DS} sensing eliminates the need for a sense resistor and improves efficiency. The maximum peak cur-

rent sense threshold can be easily selected with IPRG pin. Switching frequency is internally set at 550KHz.

The demo board has optional power component footprints to deliver higher output current and a tracking function, allowing V_{out} to track an external voltage signal at the TRACK terminal (JP4: Track).

Design files for this circuit board are available. Call the LTC factory.

LTC is a trademark of Linear Technology Corporation

Table 1. Performance Summary ($T_A = 25^\circ\text{C}$)

PARAMETER	CONDITION	VALUE
Input Voltage Range		2.75V to 9.8V
V_{OUT}	$V_{IN} = 2.75\text{V}-9.8\text{V}$, $I_{OUT} = 0\text{A to }2\text{A}$	$1.8\text{V} \pm 2.5\%$
Maximum load current I_{OUT}	$V_{IN} = 2.75\text{V}-9.8\text{V}$	2A
Typical Output Ripple Voltage	$V_{IN} = 3.3\text{V}$, $I_{OUT} = 2\text{A}$ (20MHz BW)	8mV _{p-p}
Typical Switching Frequency		550kHz

QUICK START PROCEDURE

Demonstration circuit 882 is easy to set up to evaluate the performance of the LTC3809-1. Refer to Figure 1 for proper measurement equipment setup and follow the procedure below: (Initial jumper positions: JP1 selected; JP4: Soft Start)

NOTE: When measuring the input or output voltage ripple, care must be taken to avoid a long ground lead on the oscilloscope probe. Measure the input or output voltage ripple by touching the probe tip directly across the V_{in} or V_{out} and GND terminals. See Figure 2 for proper scope probe technique.

1. With power off, connect the input power supply to V_{in} (2.75V-9.8V) and GND (input return).

2. Connect the 1.8V load between V_{out} and GND (Initial load: 0 A).
3. Connect the DVMs to the input and output.
4. Turn on the input power supply and check for the proper output voltage. V_{out} should be $1.8\text{V} \pm 2.5\%$.
5. Once the proper output voltage is established, adjust the load within the operating range and observe the output voltage regulation, ripple voltage and other parameters.

QUICK START GUIDE FOR DEMONSTRATION CIRCUIT 882

SYNCHRONOUS STEP-DOWN CONVERTER WITH OUTPUT TRACKING

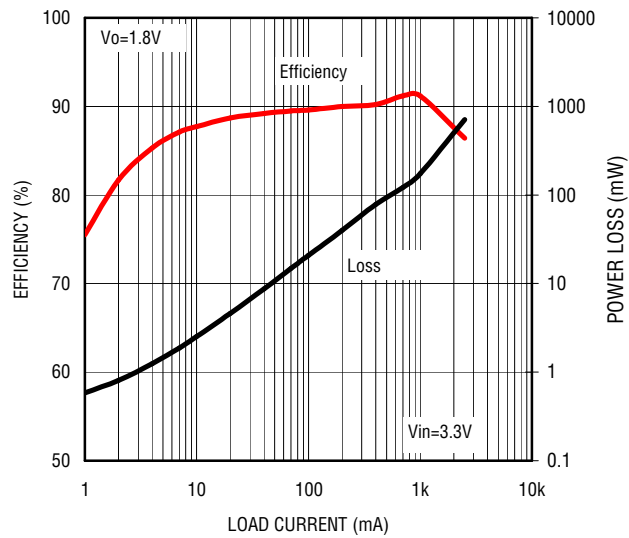
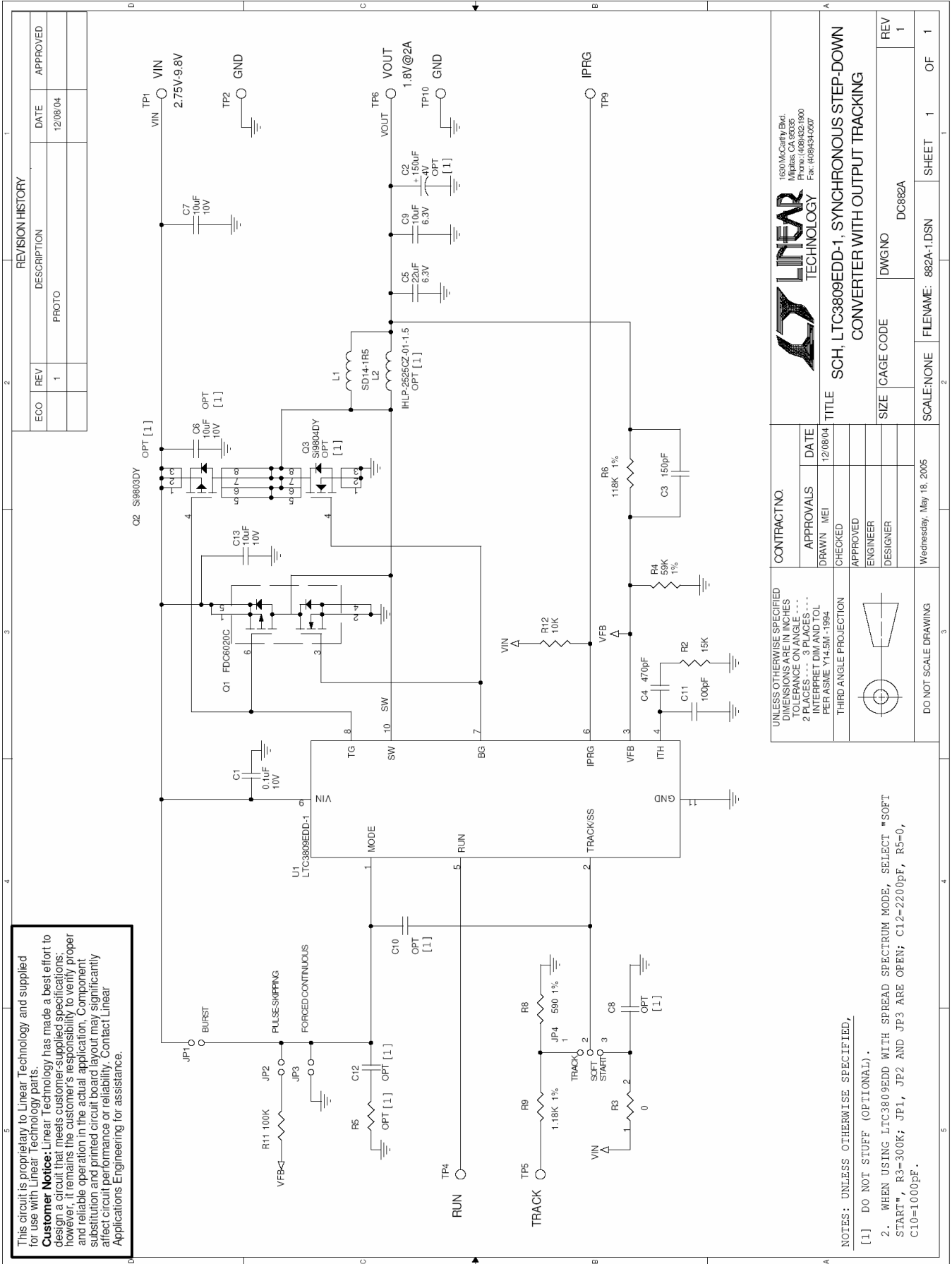


Figure 3. Efficiency and Loss vs Load Current (Burst Mode)

QUICK START GUIDE FOR DEMONSTRATION CIRCUIT 882 SYNCHRONOUS STEP-DOWN CONVERTER WITH OUTPUT TRACKING



This circuit is proprietary to Linear Technology and supplied for use with Linear Technology parts.
Customer Notice: Linear Technology has made a best effort to design a circuit that meets customer-supplied specifications; however, it remains the customer's responsibility to verify proper and reliable operation in the actual application. Component substitution and printed circuit board layout may significantly affect circuit performance or reliability. Contact Linear Applications Engineering for assistance.