



Chipsmall Limited consists of a professional team with an average of over 10 year of expertise in the distribution of electronic components. Based in Hongkong, we have already established firm and mutual-benefit business relationships with customers from,Europe,America and south Asia,supplying obsolete and hard-to-find components to meet their specific needs.

With the principle of “Quality Parts,Customers Priority,Honest Operation,and Considerate Service”,our business mainly focus on the distribution of electronic components. Line cards we deal with include Microchip,ALPS,ROHM,Xilinx,Pulse,ON,Everlight and Freescale. Main products comprise IC,Modules,Potentiometer,IC Socket,Relay,Connector.Our parts cover such applications as commercial,industrial, and automotives areas.

We are looking forward to setting up business relationship with you and hope to provide you with the best service and solution. Let us make a better world for our industry!



Contact us

Tel: +86-755-8981 8866 Fax: +86-755-8427 6832

Email & Skype: info@chipsmall.com Web: www.chipsmall.com

Address: A1208, Overseas Decoration Building, #122 Zhenhua RD., Futian, Shenzhen, China



DESCRIPTION

Demonstration circuit 913 is a high efficiency and high density supply featuring the 3-output, 3-phase synchronous buck regulator LTC3773. The input voltage range of the demo board is designed for 4.5V to 13.5V, though the LTC3773 controller can take up to $36V_{MAX}$ V_{in} . The outputs of this board are 2.5V/15A, 1.8V/15A and 1.2V/15A. To minimize input ripple current and capacitor size, there is 120° phase clock interleaving among every two phases. The power up/down tracking of the three output voltages is programmable. The supply can be synchronized to an external clock signal.

The critical power components are on the top side of the PC board and are within a 1.7" x 1.7" "drop-in" layout area. The small signal components and IC are on the bottom side of the PC board within a 1" x 1" board area. The LTC3773EUHF regulator IC is in a small 5mm x 7mm QFN package with exposed thermal pad for low thermal impedance. An optional 5V bias supply is stuffed on the board to power the LTC3773.

**Design files for this circuit board are available.
Call the LTC factory.**


 , LTC and LT are registered trademarks of Linear Technology Corporation.

Table 1. Performance Summary ($T_A = 25^\circ\text{C}$)

PARAMETER	CONDITION	VALUE
Input Voltage	Typical	4.5V-13.5V (15V abs_max)
Output Voltage V_{OUT1}	$I_{OUT1} = 0A$ to 15A	$2.5V \pm 2\%$
Output Voltage V_{OUT2}	$I_{OUT2} = 0A$ to 15A	$1.8V \pm 2\%$
Output Voltage V_{OUT3}	$I_{OUT3} = 0A$ to 15A	$1.2V \pm 2\%$
Maximum Output Current	$V_{IN} = 4.5V-13.5V$	15A Each Output
Switching frequency	4.5V-13.5V $_{in}$	400kHz
Full Load Efficiency	$V_{IN} = 12V, V_{OUT1} = 2.5V, I_{OUT1} = 15A$	90% Typical
	$V_{IN} = 12V, V_{OUT2} = 1.8V, I_{OUT2} = 15A$	88 % Typical
	$V_{IN} = 12V, V_{OUT3} = 1.2V, I_{OUT3} = 15A$	84.5 % Typical

QUICK START PROCEDURE

Demonstration circuit 913 is easy to set up to evaluate the performance of the LTC3773EUHF. Refer to Figure 1 for proper measurement equipment setup and follow the procedure below:

QUICK START GUIDE FOR DEMONSTRATION CIRCUIT 913

POLYPHASE 3-OUTPUT STEP-DOWN SUPPLY WITH TRACKING

NOTE: When measuring the input or output voltage ripple, care must be taken to avoid a long ground lead on the oscilloscope probe. Measure the input or output voltage ripple by touching the probe tip directly across the Vin or Vout and GND terminals. See Figure 2 for proper scope probe technique.

1. The following are the default jumper settings:

+5V Select	INT 5V	PHASMD	SDB1	SDB2	SDB3	FC
INT.	ON	120	ON	ON	ON	CCM

The following tables show the assembly options to program the power up/down tracking among Vout1, Vout2 and Vout3:

	VOUT1 TRACKING OPTIONS	R8	C13	C10
1*	Softstart W/O tracking	0	DNP	0.01uF
2	Track TRACK1	Stuff, value TBD	Stuff R, value TBD	DNP

	VOUT2 TRACKING OPTIONS	R13	R18	C22
1	Softstart W/O tracking	DNP	DNP	0.01uF
2*	Track VOUT1	20K	10K	DNP

	VOUT3 TRACKING OPTIONS	R28	R30	C29
1	Softstart W/O tracking	DNP	DNP	0.01uF
2*	Track VOUT2	10K	10K	DNP

*With existing tracking circuit assembly, VOUT1 starts independently (Option 1). VOUT2 tracks VOUT1 during start up (option 2). VOUT3 tracks VOUT2 during start up (option 2). Figure 6 and 7 are the typical power-up/down waveforms with rail tracking.

- With power off, connect the input power supply to VIN and GND. Connect the loads between VOUT1, VOUT2, VOUT3 and GND. Preset the load current at 0A (minimum). Refer to Figure 1 for correct test set up.
- Turn on the input power.

NOTE: Make sure that the input voltage does not exceed 15V.
- Check for the proper output voltages: V_{OUT1} : 2.45V-2.55V, V_{OUT2} : 1.764V – 1.836V, and V_{OUT3} : 1.176V – 1.224V

NOTE: If there is no output, temporarily disconnect the load to make sure that the load is not set too high.
- Once the proper output voltages are established, adjust the loads within the operating range and observe the output voltage regulation, ripple voltage, efficiency and other parameters.

QUICK START GUIDE FOR DEMONSTRATION CIRCUIT 913

POLYPHASE 3-OUTPUT STEP-DOWN SUPPLY WITH TRACKING

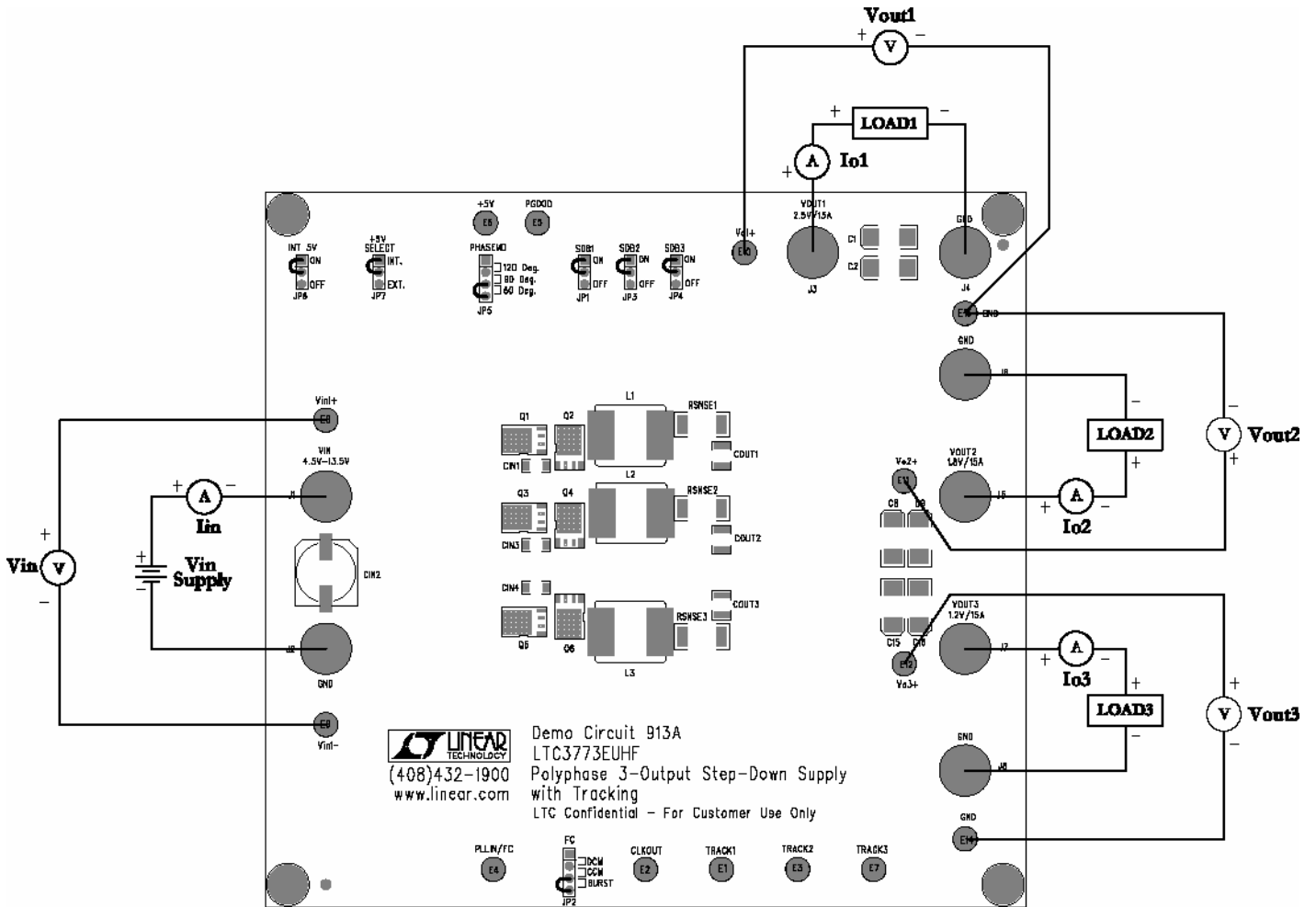


Figure 1. Proper Measurement Equipment Setup

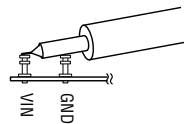


Figure 2. Measuring Input or Output Ripple

QUICK START GUIDE FOR DEMONSTRATION CIRCUIT 913

POLYPHASE 3-OUTPUT STEP-DOWN SUPPLY WITH TRACKING

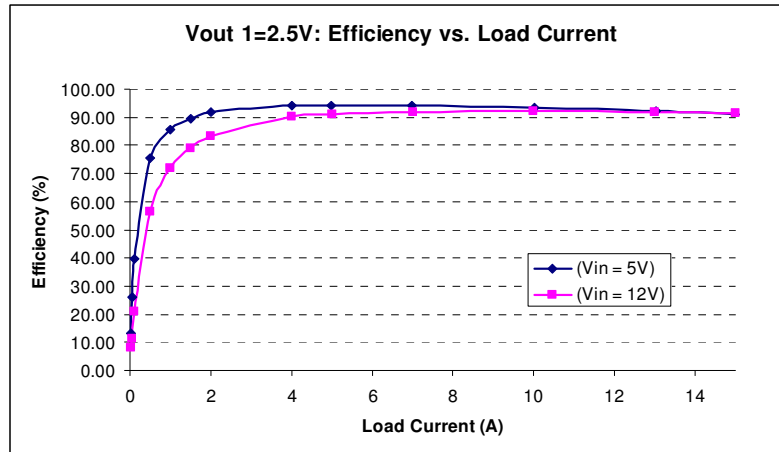


Figure 3. Typical Supply Efficiency vs Load Current of 2.5V output

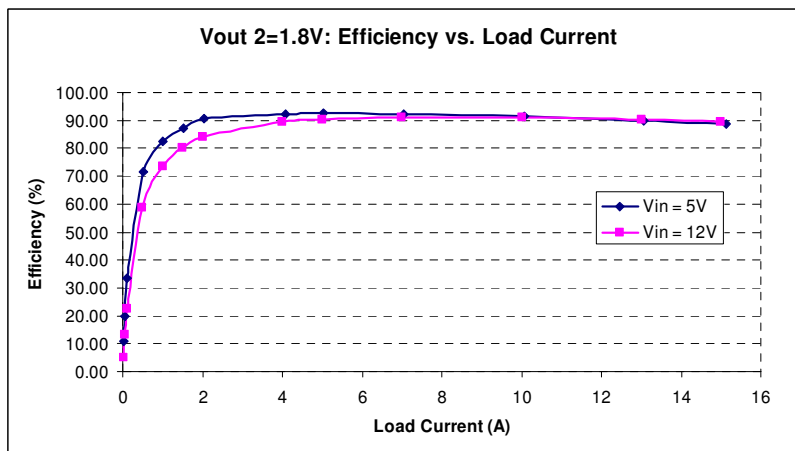


Figure 4. Typical Supply Efficiency vs Load Current of 1.8V output

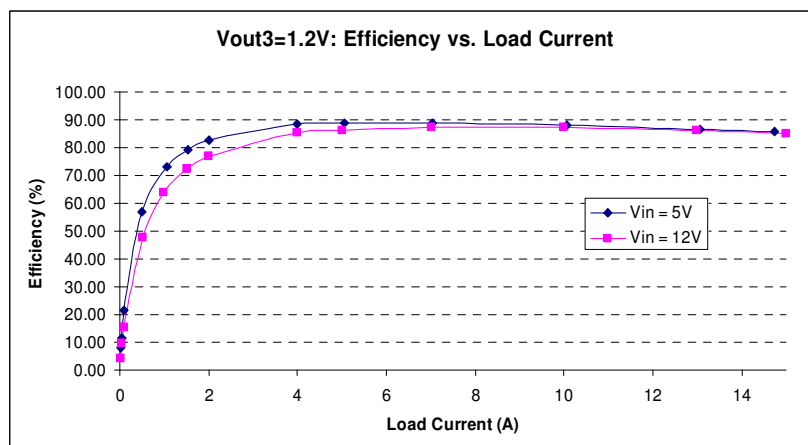


Figure 5. Typical Supply Efficiency vs Load Current of 1.2V output

QUICK START GUIDE FOR DEMONSTRATION CIRCUIT 913

POLYPHASE 3-OUTPUT STEP-DOWN SUPPLY WITH TRACKING

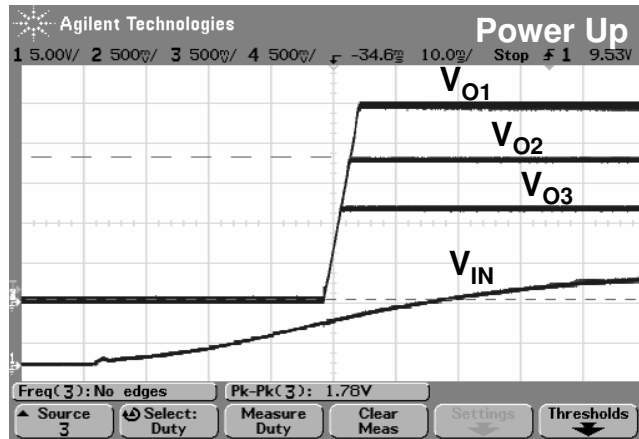


Figure 6. Power Up Tracking

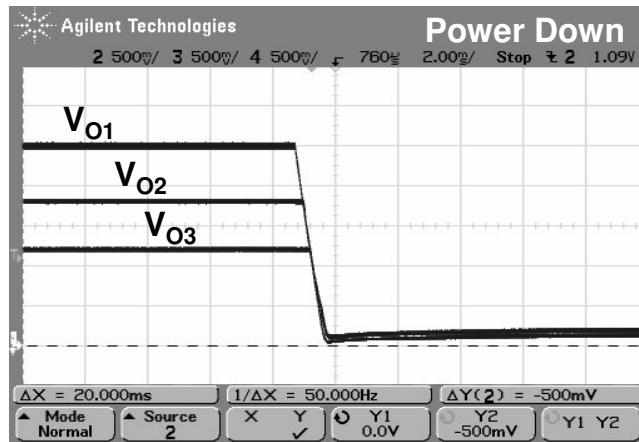
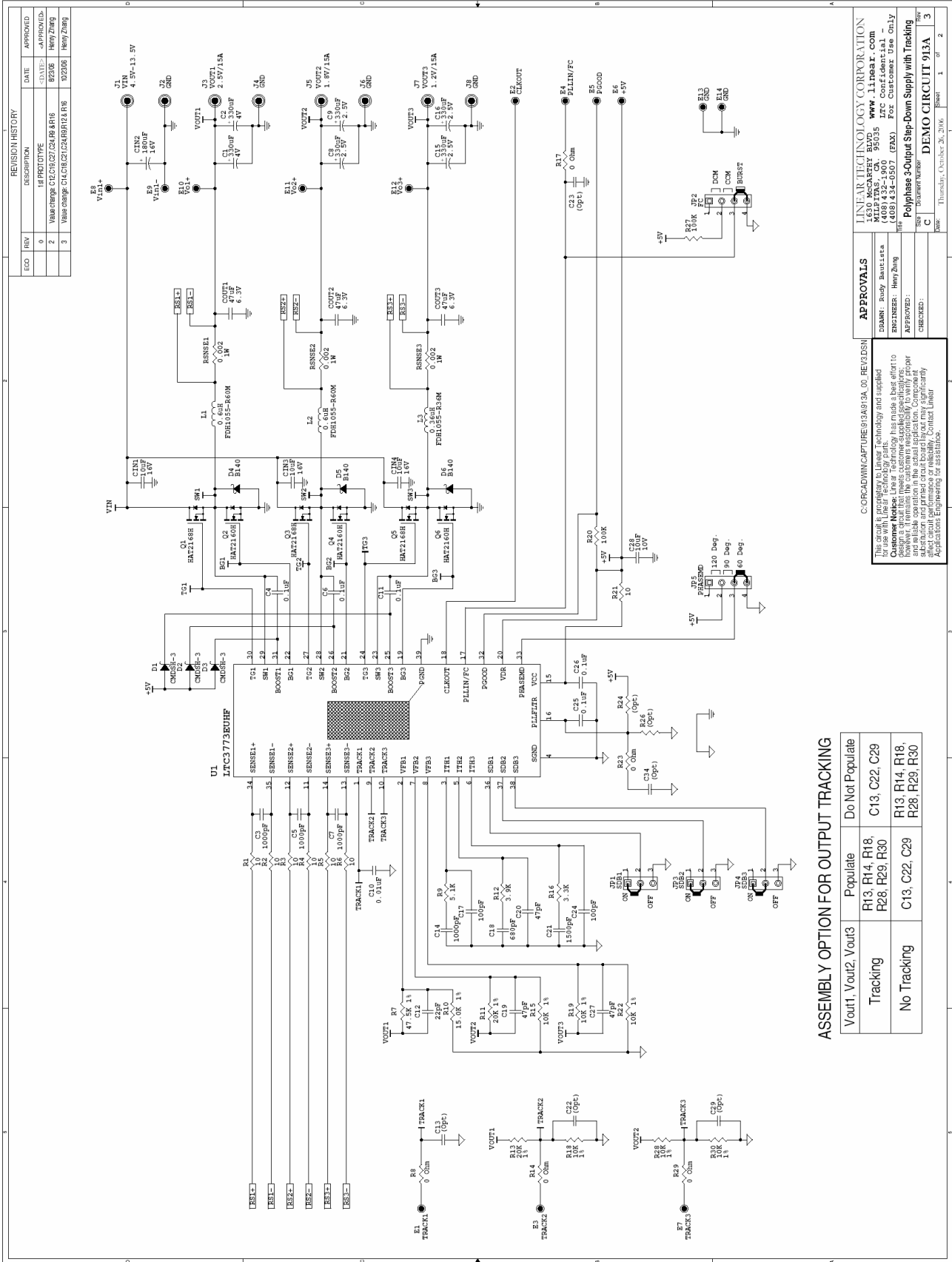


Figure 7. Power Down Tracking

QUICK START GUIDE FOR DEMONSTRATION CIRCUIT 913

POLYPHASE 3-OUTPUT STEP-DOWN SUPPLY WITH TRACKING



ECO	REV	DESCRIPTION	DATE	APPROVED
	0	IF PROTOTYPE	--	--
	2	Value change: CIN2, C27, C24, R9, R16	B2308	Henry Zhang
	3	Value change: CIN2, C27, C24, R9, R16	B23206	Henry Zhang

REVISION HISTORY

APPROVALS

DRAMAN: Rudy Asante
 ENGINEER: Henry Zhang
 APPROVED: [Signature]
 CHECKED: [Signature]

Customer Notice: Linear Technology has made a best effort to provide you with the most accurate and complete information available for this application. Components are not guaranteed for use in this application. Components may be used in applications where safety-critical performance is required. Contact Linear Applications Engineering for assistance.

LINEAR TECHNOLOGY CORPORATION
 1620 McCarthy Blvd., www.linear.com
 Fremont, CA 94538-5000
 (408) 433-1900
 FAX: (408) 433-0507

PolyPhase 3-Output Step-Down Supply with Tracking

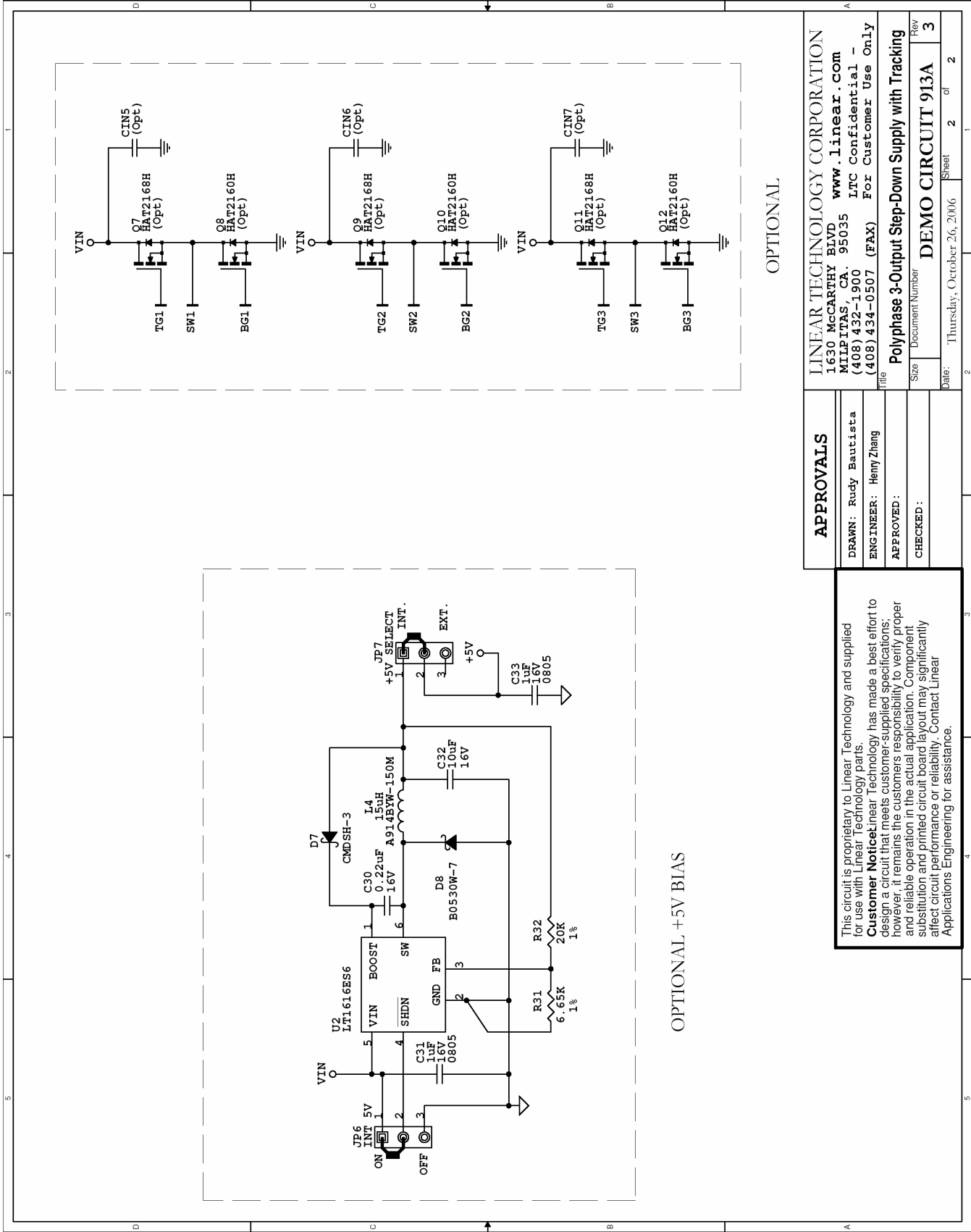
DEMOCAPTURE: 913A913A.00, REV: 0.05N
 DEMO CIRCUIT 913A
 Thursday, October 26, 2006

ASSEMBLY OPTION FOR OUTPUT TRACKING

Output	Tracking	Populate	Do Not Populate
Vout1, Vout2, Vout3	Tracking	R13, R14, R18, R28, R29, R30	C13, C22, C29
	No Tracking	C13, C22, C29	R13, R14, R18, R28, R29, R30

QUICK START GUIDE FOR DEMONSTRATION CIRCUIT 913

POLYPHASE 3-OUTPUT STEP-DOWN SUPPLY WITH TRACKING



APPROVALS	
DRAWN: Rudy Bautista	
ENGINEER: Henry Zhang	
APPROVED:	
CHECKED:	
LINEAR TECHNOLOGY CORPORATION 1630 MCCARTHY BLVD www.linear.com MILPITAS, CA. 95035 (408) 432-1900 (408) 434-0507 (FAX) For Customer Use Only	
Polyphase 3-Output Step-Down Supply with Tracking Document Number	
Size	3
Date:	Thursday, October 26, 2006
Sheet	2 of 2

This circuit is proprietary to Linear Technology and supplied for use with Linear Technology parts.
Customer Notice: Linear Technology has made a best effort to design a circuit that meets customer-supplied specifications; however, it remains the customer's responsibility to verify proper and reliable operation in the actual application. Component substitution and printed circuit board layout may significantly affect circuit performance or reliability. Contact Linear Applications Engineering for assistance.