



Chipsmall Limited consists of a professional team with an average of over 10 year of expertise in the distribution of electronic components. Based in Hongkong, we have already established firm and mutual-benefit business relationships with customers from,Europe,America and south Asia,supplying obsolete and hard-to-find components to meet their specific needs.

With the principle of “Quality Parts,Customers Priority,Honest Operation,and Considerate Service”,our business mainly focus on the distribution of electronic components. Line cards we deal with include Microchip,ALPS,ROHM,Xilinx,Pulse,ON,Everlight and Freescale. Main products comprise IC,Modules,Potentiometer,IC Socket,Relay,Connector.Our parts cover such applications as commercial,industrial, and automotives areas.

We are looking forward to setting up business relationship with you and hope to provide you with the best service and solution. Let us make a better world for our industry!



Contact us

Tel: +86-755-8981 8866 Fax: +86-755-8427 6832

Email & Skype: info@chipsmall.com Web: www.chipsmall.com

Address: A1208, Overseas Decoration Building, #122 Zhenhua RD., Futian, Shenzhen, China



DESCRIPTION

Demonstration circuit 949A-A/949A-B is a 4.5A peak switch current boost LED driver with PWM dimming featuring the LT3478-1/LT3478. DC949A-A uses the LT3478-1, a fixed 1A LED driver with the LED current sense resistor inside the IC. DC949A-B has the LT3478 adjustable LED current converter requiring an external sense resistor (R11). Both circuits are optimized to drive a 350mA LED string with a total LED voltage above the input voltage and below 40V. The wide input voltage range, internal 4.5A npn power switch, floating current sense amplifier, LED current dimming control, inrush protection, programmable switching frequency, soft-start, and overvoltage protection make the LT3478-1/LT3478 an extremely powerful and versatile LED driving IC. It can be used for boost, buck mode, and buck-boost mode LED drivers.

The LT3478-1/LT3478 has programmable overvoltage protection in case the LEDs are open or not properly attached to the terminals on the PCB. The shutdown function is activated by pulling the shutdown terminal to ground. In shutdown the boost configuration allows the input voltage to be seen on the output and if the attached LED array leaks current at the input voltage, the LEDs may not completely turn off although IC switching will cease. Tying the PWM terminal low will disable the LEDs in shutdown or during normal running operation. PWM dimming can be applied to DC949A as built. CTRL dimming can be used for analog control of LED current if the resistor networks attached to the CTRL1 and/or CTRL2 pins are removed. Inrush protection limits the V_s input current to 6A during a hotplug or startup condition. Soft-start prevents high inrush current in most conditions. See

details in the 'Soft-Start' section in the LT3478-1/LT3478 datasheet.

The switching frequency is set at 1MHz and can be adjusted by changing a single resistor. Please read the datasheet for details on setting the switching frequency and selecting components such as the inductor and capacitors. The maximum rating on V_s is 36V. However, in a boost converter, the maximum normal operating voltage of V_s is the maximum LED voltage connected to the output. Using a higher voltage on V_s results in loss of control of LED current.

Modifications can be made to DC949A in order to convert the board from a boost LED driver to either a buck mode or buck-boost mode LED driver. The LT3003 three string ballaster is also available as an option for any configuration of the DC949A. Please consult the factory for customization details. Some schematics are supplied in this quick-start guide.

The LT3478-1, LT3478 datasheet gives a complete description of the part, operation and applications information. The datasheet must be read in conjunction with this Quick Start Guide for demonstration circuit 949A-A/949A-B. The LT3478-1, LT3478 is assembled in a small 16-lead plastic TSSOP FE package with a thermally enhanced ground pad. Proper board layout is essential for maximum thermal performance. See the datasheet section 'Layout Considerations'.

Design files for this circuit board are available. Call the LTC factory.

LT is a trademark of Linear Technology Corporation

QUICK START GUIDE FOR DEMONSTRATION CIRCUIT 949A-A/949A-B

4.5A BOOST LED DRIVER WITH PWM DIMMING

Table 1. Typical Performance Summary for both DC949A-A and DC949A-B

PARAMETER	CONDITION	VALUE (TYPICAL)
Input Voltage V_S Range	$V_{LED} > 25V, I_{LED} = 350mA$	2.8 – 25V
Input Voltage V_{IN} Range	Non-transient	2.8 – 16V
I_{LED}		350mA
Maximum Output Voltage		36V
Open LED Output Voltage		36V to 40V
Switching Frequency	$R6 = 31.6k$	1MHz
Efficiency	$V_S=12V V_{IN}=5V V_{LED}=31.5V I_{LED}=.35A$	88%
Maximum PWM Dimming Ratio	$V_S=12V V_{IN}=5V V_{LED}=31.5V I_{LED}=.35A$	3000:1

QUICK START PROCEDURE

Demonstration circuit 949A-A/949A-B is easy to set up to evaluate the performance of the LT3478-1, LT3478. Follow the procedure below:

NOTE: Make sure that the V_S DC input voltage does not exceed 25V and the V_{IN} DC input voltage does not exceed 16V.

1. Connect a string of LEDs with forward voltage less than 36V, but greater than the V_S input voltage, to the LED+ and LED- terminals on the PCB as shown.
2. Connect the shutdown terminal to GND.

3. With power off, connect the V_S power supply to the V_S terminal and connect the V_{IN} power supply to the V_{IN} terminal within the ranges specified on the PCB.
4. Connect the PWM and V_{IN} terminals.
5. Turn the V_S and V_{IN} power supplies on.
6. Release the shutdown/GND connection.
7. Observe the LED string running at full 350mA LED current at 100% duty cycle.
8. For PWM dimming, connect a PWM 100Hz or higher signal to the PWM terminal.
9. Observe the reduction of brightness in the LED string.

QUICK START GUIDE FOR DEMONSTRATION CIRCUIT 949A-A/949A-B

4.5A BOOST LED DRIVER WITH PWM DIMMING

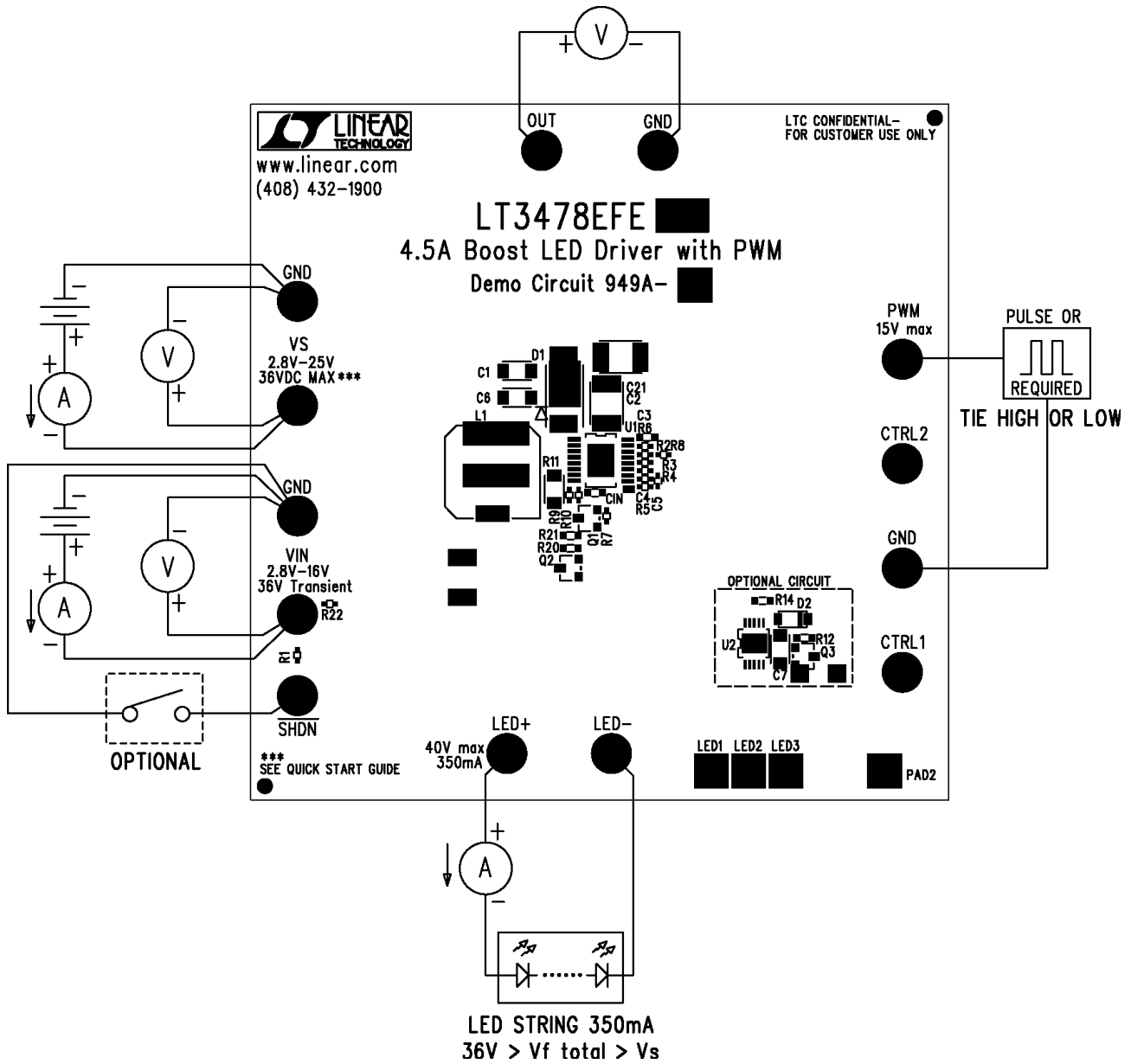


Figure 1. Test procedure setup drawing for DC949A-A DC949A-B

for details regarding the use of the sense resistor and setting the LED current. Both DC949A-A and DC949A-B are built to provide 350mA LED current in the boost LED driver topology.

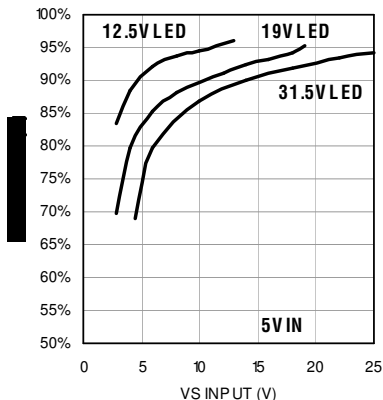


Figure 2. DC949A-A efficiency

TWO ICs, THREE TOPOLOGIES

DC949A has two build versions. DC949A-A uses the LT3478-1 1A fixed LED current IC with internal sense resistor. It can be set at full 1A current or less than 1A LED current with CTRL1,2 resistor divider network. DC949A-B uses the LT3478 adjustable LED current IC with a required external sense resistor to set the LED current. It can be set at LED currents above and below 1A. Please see the datasheet

Although DC949A is a boost LED driver, it can be reconfigured for buck-boost mode LED driving and buck mode LED driving. The datasheet details some of these changes and the figures below show sample schematics with the demonstration circuit reference designators that can be used in the different modes. There may be a cut or two required on the PCB to make these changes. Please ask for further documentation detailing the changes in DC949A for conversion to buck mode or buck-boost mode LED driving.

OPTIONAL LT3003 BALLASTER

The LT3003 is available for three-channel LED ballasting. With 1A or less output using the DC949A, three parallel channels of LED strings can be driven and PWM dimmed in all three topologies using the LT3003 with the LT3478-1 or LT3478. For details regarding the connection of the LT3003 and the LT3478 please see the LT3003 and LT3478 datasheets. When not being used, the LT3003 circuit should be left unstuffed. Please note that there is a small pad near the LT3478 Vc pin that connects internally to the LT3003 /OT2 output for overtemp protection. It is shown in the schematic of the LT3478 and it is easy to connect these functions using the DC949A.

QUICK START GUIDE FOR DEMONSTRATION CIRCUIT 949A-A/949A-B

4.5A BOOST LED DRIVER WITH PWM DIMMING

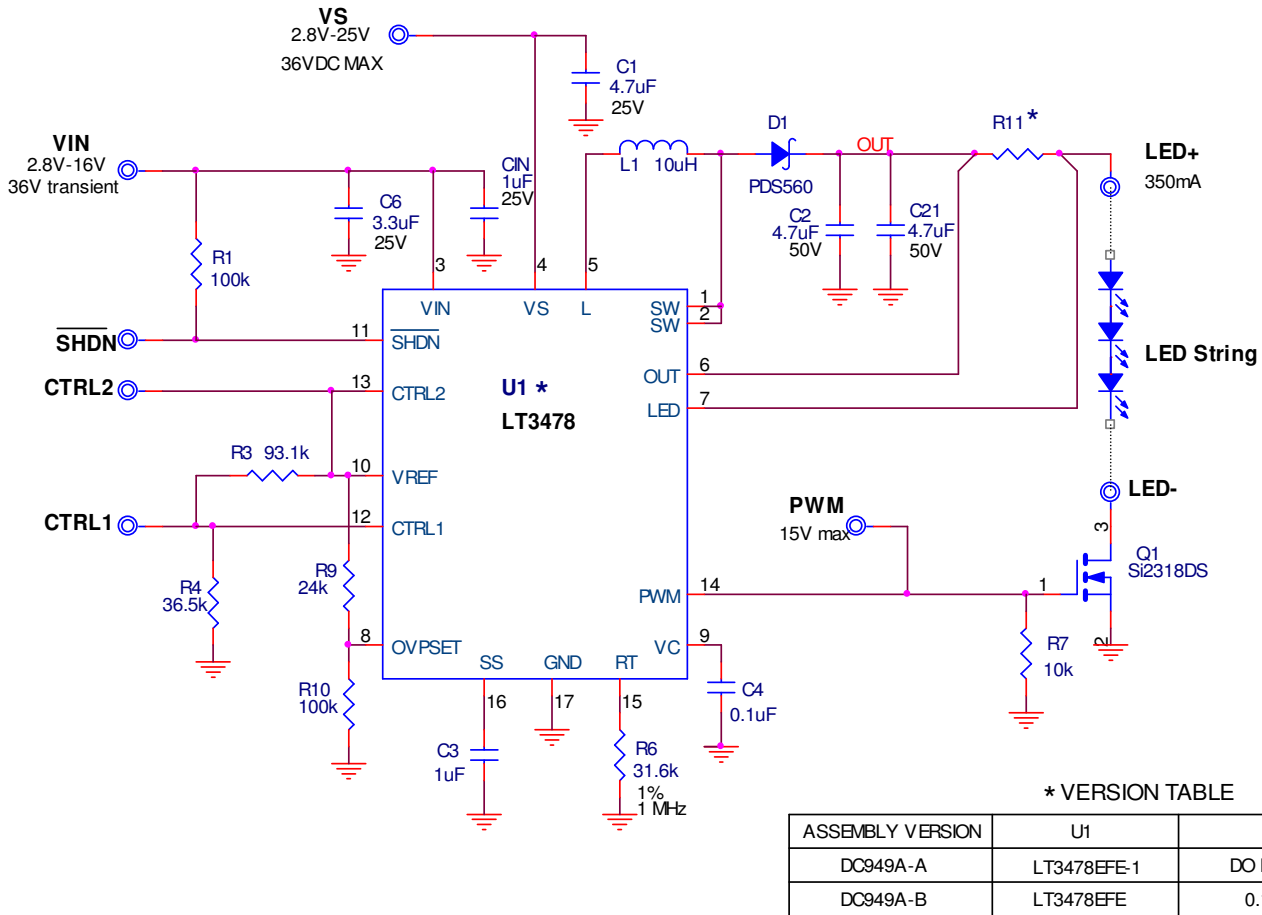
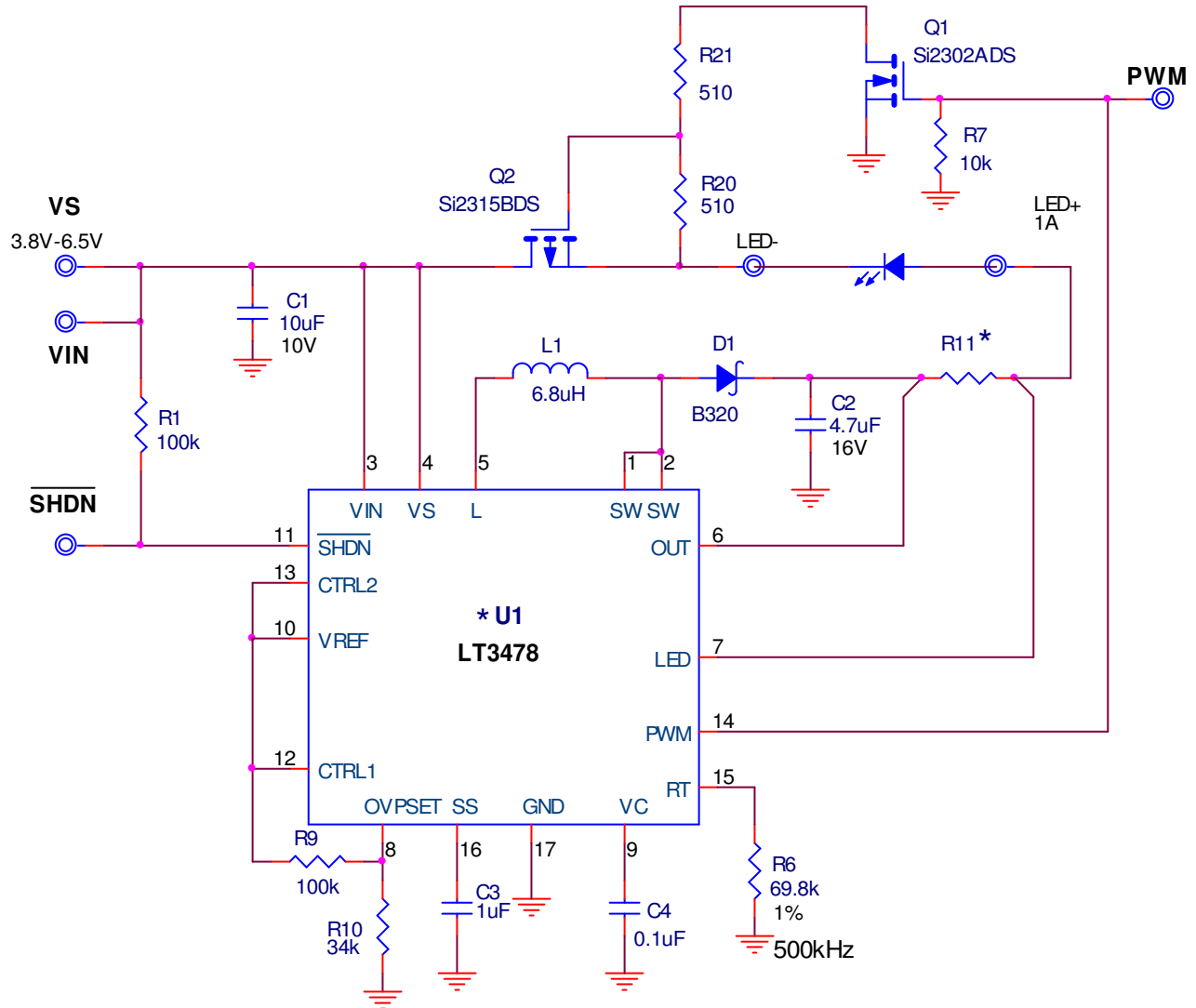


Figure 3. Customer friendly schematic for boost (as-built) DC949A. 40V is the maximum that the output will see, but OVP might be as low as 36V without any adjustments.

QUICK START GUIDE FOR DEMONSTRATION CIRCUIT 949A-A/949A-B 4.5A BOOST LED DRIVER WITH PWM DIMMING



* VERSION TABLE

ASSEMBLY VERSION	U1	R11
DC949A-A	LT3478EFE-1	DO NOT STUFF
DC949A-B	LT3478EFE	0.1 ohm 1%

Figure 4. Customer friendly schematic for buck-boost mode LED driver DC949A. This circuit requires changes to the standard demo circuit such as addition of new components and a trace cut on the top-side of the board between the drain of Q1 and the LED- terminal.

QUICK START GUIDE FOR DEMONSTRATION CIRCUIT 949A-A/949A-B

4.5A BOOST LED DRIVER WITH PWM DIMMING

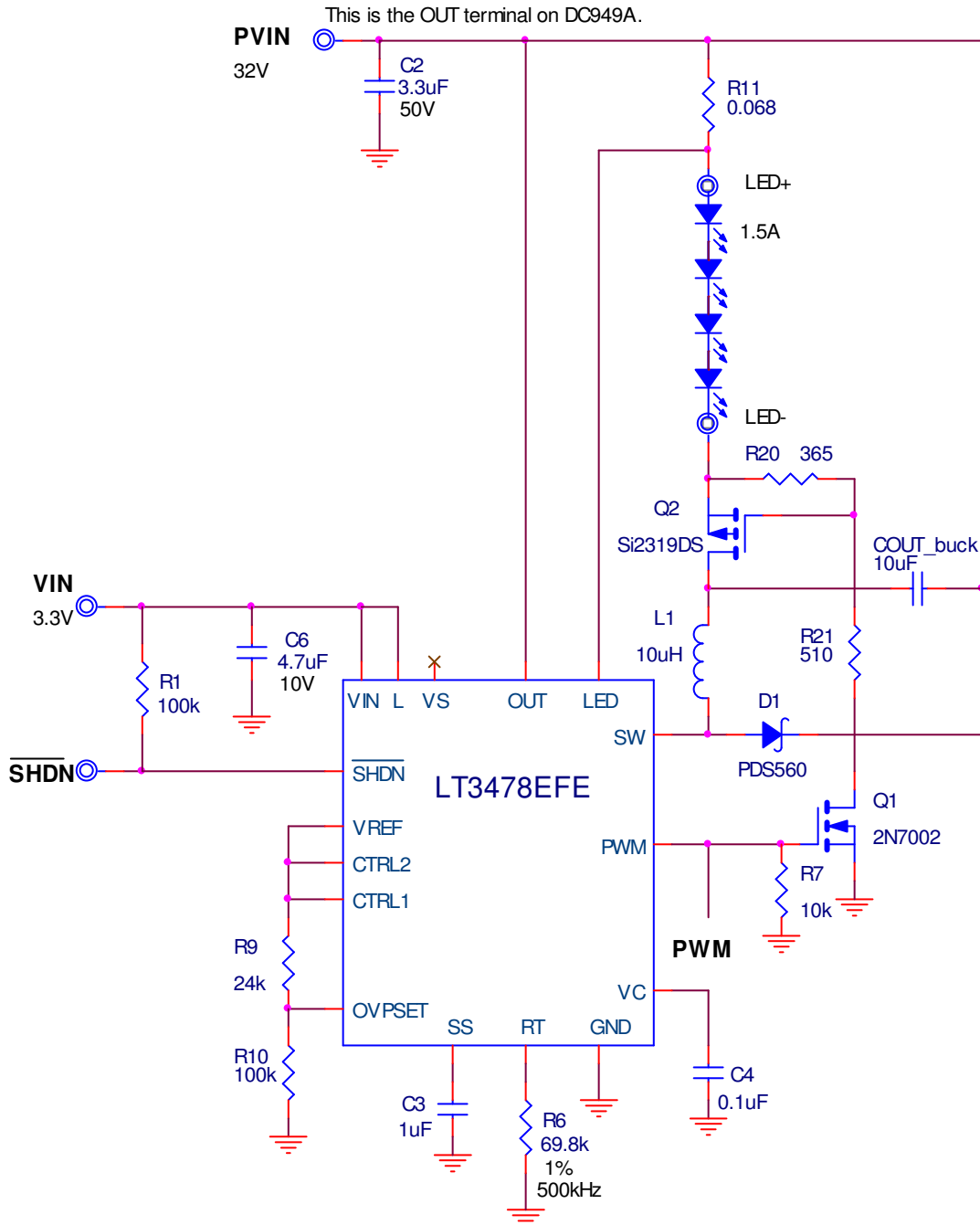
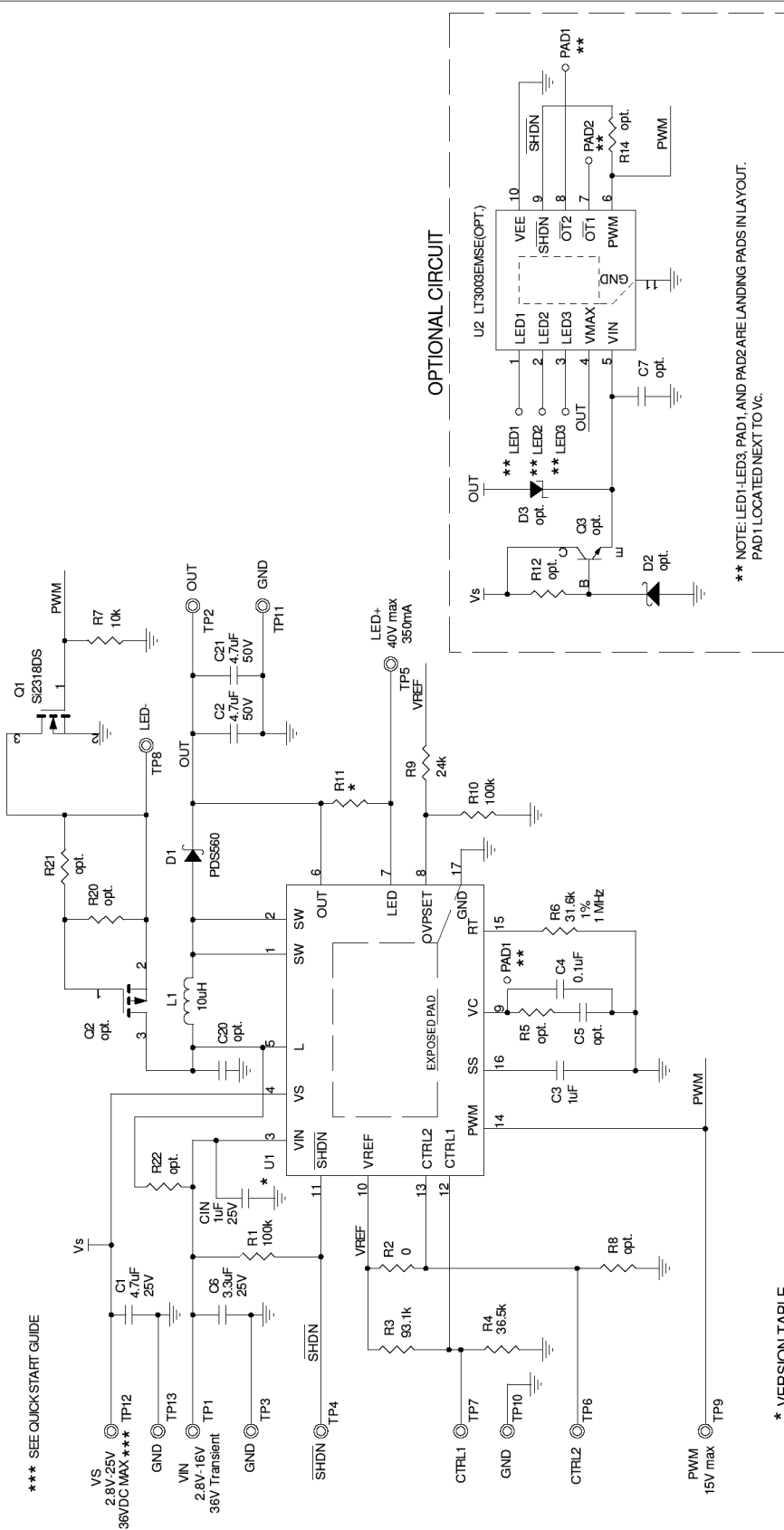


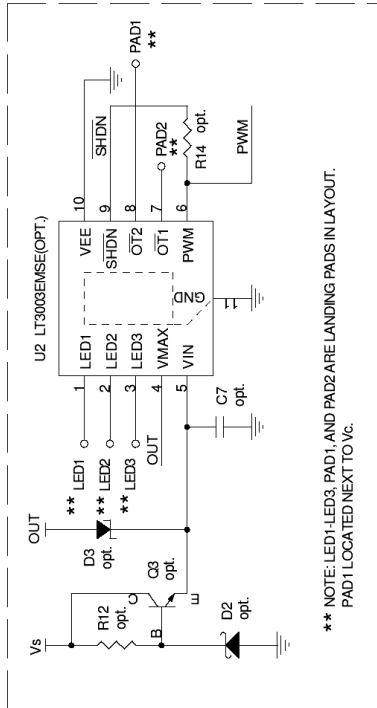
Figure 5. Customer friendly schematic for buck mode LED driver DC949A-B. This circuit requires changes to the standard demo circuit such as addition of new components and a trace cut on the top-side of the board between the drain of Q1 and the LED- terminal. The input PVIN must be connected to the OUT terminal. The connection between pin L and the inductor must be cut on the topside of the board. Pin L can be connected to VIN terminal via R22 with a zero ohm resistor. Terminal Vs can be left floating. The COUT_buck capacitor must be added to the board.

QUICK START GUIDE FOR DEMONSTRATION CIRCUIT 949A-A/949A-B 4.5A BOOST LED DRIVER WITH PWM DIMMING



*** SEE QUICK START GUIDE

OPTIONAL CIRCUIT



** NOTE: LED1-LED3, PAD1, AND PAD2 ARE LANDING PADS IN LAYOUT. PAD1 LOCATED NEXT TO VC.

* VERSION TABLE

ASSEMBLY VERSION	U1	R11
DC949A-A	LT3478E-1	DO NOT STUFF
DC949A-B	LT3478E-1	0.1 ohm 1%

CUSTOMER NOTICE

LINEAR TECHNOLOGY HAS MADE A BEST EFFORT TO DESIGN A CIRCUIT THAT MEETS CUSTOMER-SUPPLIED SPECIFICATIONS; HOWEVER, IT REMAINS THE CUSTOMER'S RESPONSIBILITY TO VERIFY PROPER AND RELIABLE OPERATION IN THE ACTUAL APPLICATION. COMPONENT SUBSTITUTION AND PRINTED CIRCUIT BOARD LAYOUT MAY SIGNIFICANTLY AFFECT CIRCUIT PERFORMANCE OR RELIABILITY. CONTACT LINEAR TECHNOLOGY APPLICATIONS ENGINEERING FOR ASSISTANCE. THIS CIRCUIT IS PROPRIETARY TO LINEAR TECHNOLOGY AND SUPPLIED FOR USE WITH LINEAR TECHNOLOGY PARTS.

CONTRACT NO.

APPROVALS	DATE
DRAWN: Junru Wu	1/9/07
CHECKED:	
APPROVED:	
DESIGNER: ENGINEER Keith Szolusha	1/9/07

LINEAR TECHNOLOGY

1535 McCarty Blvd.
Framingham, MA 01901
Phone: (419) 652-1900
Fax: (419) 654-0207

TITLE: LT3478E-1/LT3478E-1		REV: A
SIZE: DC949A	DWGNO: DC949A	REV: A
SCALE: FILENAME:	SHEET: 1	OF: 1