



Chipsmall Limited consists of a professional team with an average of over 10 year of expertise in the distribution of electronic components. Based in Hongkong, we have already established firm and mutual-benefit business relationships with customers from,Europe,America and south Asia,supplying obsolete and hard-to-find components to meet their specific needs.

With the principle of “Quality Parts,Customers Priority,Honest Operation,and Considerate Service”,our business mainly focus on the distribution of electronic components. Line cards we deal with include Microchip,ALPS,ROHM,Xilinx,Pulse,ON,Everlight and Freescale. Main products comprise IC,Modules,Potentiometer,IC Socket,Relay,Connector.Our parts cover such applications as commercial,industrial, and automotives areas.

We are looking forward to setting up business relationship with you and hope to provide you with the best service and solution. Let us make a better world for our industry!



## Contact us

Tel: +86-755-8981 8866 Fax: +86-755-8427 6832

Email & Skype: info@chipsmall.com Web: www.chipsmall.com

Address: A1208, Overseas Decoration Building, #122 Zhenhua RD., Futian, Shenzhen, China

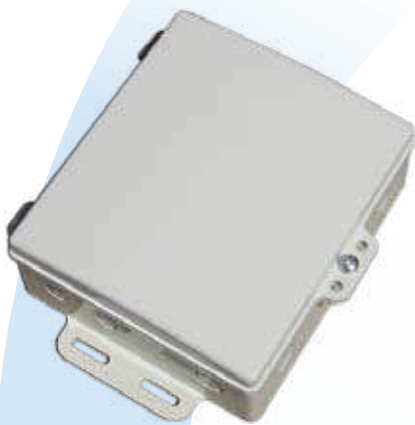




Innovative **Technology**  
for a **Connected** World

## DCE-ANT Series

# NEMA 6 Rated Die-Cast Enclosure Antennas IAS Systems



### 10" X 7.1" X 2.25" Die-Cast Waterproof Enclosure

The DCE-ANT series die-cast aluminum enclosures with integrated antenna from Laird Technologies are designed for extremely long life in outdoor environments. The powder coat paint over aluminum construction offers unsurpassed resistance to corrosion. The hinged cover/antenna radome is constructed of UV resistant plastic. The pole mount hardware includes heavy galvanized pole clamps and stainless steel U-bolts and attachment nuts. The die-cast enclosure has extra heavy duty mounting flanges for reliable mounting to poles or surface mounting to walls.

The most unique feature is the inclusion of 8 engineered hole knockouts which allow for many different configurations of connectors and feedthru's without the need for drilling holes. The knockouts are easily removed using a Flat Blade Screwdriver and hammer. The enclosures have qty. 4 threaded 1/4" tall standoffs in the base for mounting a user plate (included), which in turn can hold the users electronics. This configuration provides universal mounting which is fully customizable by the user.

### FEATURES

- Integrated VPOL antennas in UV plastic hinged cover
- Choice of:
  - 2400-2700MHz 12dBi Wide Band VPOL
  - 4940-5850MHz 19dBi Wide Band VPOL
  - 2400-2485, 4940-5850MHz Dual Band 12/15 dBi VPOL
  - 2300-2700MHz 14 dBi VPOL
  - 3300-3800MHz 16 dBi VPOL
- Die cast aluminum enclosure with white epoxy powder coat paint
- Qty 8 engineered hole knockouts for many possible configurations. No drilling required!
- Qty 4 0.25" tall threaded standoffs and mounting plate for mounting of electronics inside enclosure
- Pole mount or wall mount
- Nema 6 rated for long term weatherproofing
- Various connector configurations available from stock

### MARKETS

- Wireless base stations
- Wireless client radios
- Mesh networks
- Public safety wireless systems
- 802.11 a/b/g wireless systems
- 2.5GHz WiMAX

**global solutions: local support.**<sup>™</sup>

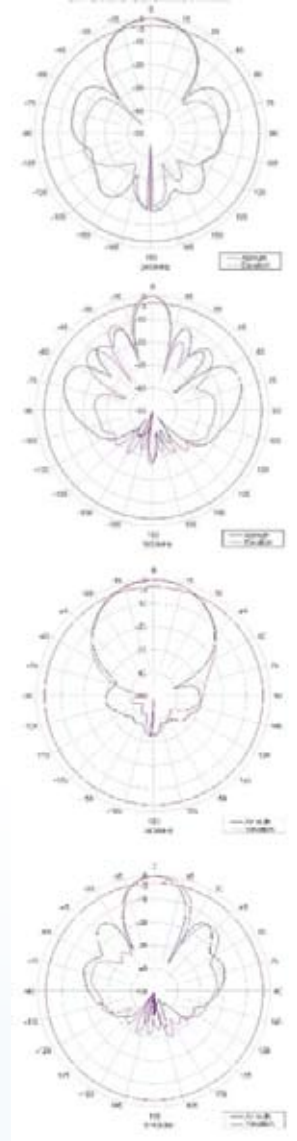
USA: +1 800 323.3757  
Europe: +46-8-555.722-00  
Asia: +886-2-2286-2828

sales@pacwireless.com  
[www.lairdtech.com](http://www.lairdtech.com)

**Nema 6 Die-Cast Enclosure**

Specifications	
Knockouts (Qty 8)	Qty 2 0.810" diameter Qty 6 0.625" diameter
Knockout Locations	Qty 3 on bottom, Qty 3 on right side, Qty 1 on top and Qty 1 in back
Internal Standoffs	(Qty 4) 8-32 tapping, 6.5" x 5.5" centers, 0.25" height
Useable Interior Space	7.125" x 6.125" x 2" (181 x 156 x 51mm)
Mounting	1" to 2" pole using included bracket kit, or wall mount using user supplied screws
Cover Seal	High performance EPDM gasket
Solar Heat Rise	Internal temperature ≤ 4 deg C above external ambient
Overall Size (L x W x H)	10" x 7.1" x 2.25" (254 x 180 x 57mm)
Weight	40oz (1.13kg)

**Antenna Patterns**



**Nema 6 Enclosed Antennas**

MODEL	Frequency (MHz)	GAIN (dBi)	Bmwidth (deg)	VSWR	Impedance (Ohms)	Input (watts)
<b>DCE-ANT2412</b>	2400-2485	12	35	1.5:1	50	10
<b>DCE-ANT5819</b>	4940-5850	19	15	1.5:1	50	10
<b>DCE-ANT2314</b>	2300-2700	14	30	2.0:1	50	10
<b>DCE-ANT3516</b>	3300-3800	16	30	1.7:1	50	10
<b>DCE-ANT2458</b>	2400-2485	12	43	1.5:1	50	10
<b>Dual Band</b>	4940-5850	15	22			

ANT-SPEC-DCE-ANT 1008

Any information furnished by Laird Technologies and its agents is believed to be accurate and reliable. Responsibility for the use and application of Laird Technologies materials rests with the end user since Laird Technologies and its agents cannot be aware of all potential uses. Laird Technologies makes no warranties as to the fitness, merchantability, or suitability of any Laird Technologies materials or products for any specific or general uses. Laird Technologies shall not be liable for incidental or consequential damages of any kind. All Laird Technologies products are sold pursuant to the Laird Technologies domestic terms and conditions of sale in effect from time to time, a copy of which will be furnished upon request. For further information please visit our website at [www.lairdtech.com](http://www.lairdtech.com) Alternatively contact: [sales@lairdtech.com](mailto:sales@lairdtech.com). Bluetooth® is a trademark owned by Bluetooth SIG, Inc., USA and licensed to Laird Technologies.

© 2008 All Rights Reserved. Laird Technologies is a registered trademark of Laird Technologies, Inc.

