



Chipsmall Limited consists of a professional team with an average of over 10 year of expertise in the distribution of electronic components. Based in Hongkong, we have already established firm and mutual-benefit business relationships with customers from,Europe,America and south Asia,supplying obsolete and hard-to-find components to meet their specific needs.

With the principle of “Quality Parts,Customers Priority,Honest Operation,and Considerate Service”,our business mainly focus on the distribution of electronic components. Line cards we deal with include Microchip,ALPS,ROHM,Xilinx,Pulse,ON,Everlight and Freescale. Main products comprise IC,Modules,Potentiometer,IC Socket,Relay,Connector.Our parts cover such applications as commercial,industrial, and automotives areas.

We are looking forward to setting up business relationship with you and hope to provide you with the best service and solution. Let us make a better world for our industry!



Contact us

Tel: +86-755-8981 8866 Fax: +86-755-8427 6832

Email & Skype: info@chipsmall.com Web: www.chipsmall.com

Address: A1208, Overseas Decoration Building, #122 Zhenhua RD., Futian, Shenzhen, China





Smart Technology. Delivered.

10x10x2 DCE

Die-Cast Enclosure Antennas

10X10 DCE OFFERS 900 TO 5850 MHZ OPERATION OPTIONS

The DCE series die cast aluminum enclosures from Laird are an innovative antenna system which gives the operator ultimate system flexibility. The die-cast enclosure is available as a stand-alone enclosure, with an integrated low-gain antenna, or with a detachable high-gain panel antenna. Antennas are wide band for spectral flexibility.

Radomes are UV resistant ASA plastic. Hardware is stainless steel. The antenna systems come with a pigtail cable with choice of connectors to adapt to any available radio equipment. There is a removable and customizable user mounting plate inside for mounting electronics. The antenna models come standard with Laird Technologies patented RJ45-ECS field replaceable ethernet connector feedthru.

The die-cast enclosure can be pole or wall mounted. A heavy duty tilt bracket is available for those installations requiring up or downtilt. Eleven (11) engineered knockouts are provided; 9 sized for N connectors and 2 sized for a cable feedthru.



FEATURES

- 11 engineered knockouts
- Wide band antennas
- Rugged and weatherproof
- Hinged cover for easy maintenance
- IP 67 Rated
- Integrated low gain or detachable high gain antenna in variety of frequencies and gains

MARKETS

- WiFi / WLAN / WiMAX systems
- Industrial wireless
- Mesh networks
- Wi-POP base stations
- Client antennas
- Industrial wet process electrical enclosure

SPECIFICATIONS	900-928	2400-2700	4900-5850	2400-2485/ 5150-5850
Gain (integrated antenna)	8dBi	15dBi	19dBi	12dBi at 2.4GHz, 16dBi at 5.15GHz
Gain (detachable antenna)	12dBi	19dBi	24dBi	N/A
VSWR (integrated antenna)	1.5:1	1.5:1	1.7:1	2:1
VSWR (detachable antenna)	1.5:1	1.5:1	1.5:1	N/A
Impedance	50 OHM			
Input Power	100 W			
Wind Survivability	Die-cast enclosure (150mph); Detachable antenna (125mph)			
Weight (die-cast enclosure)	5.3lb (2.4kg)			
Weight (detachable antenna)	3lb (1.4kg)			
Dimensions (inside)	254 x 254 x 51 mm (10" x 10" x 2")			
Dimensions (outside integrated antenna)	317 x 264 x 99 mm (12.5" x 10.4" x 3.9")			
Dimensions (outside detachable antenna)	410 x 371 x 32 mm (16.13" x 14.63" x 1.3")			
Dimensions (stand alone DCE enclosures)	317.5 x 264.16 x 76.2 mm (12.5" X 10.4" X 3")			
Radome	ASA			
Operational Temperature	-30°C to +75°C			
Mount Style	Wall / Mast / Tilt			

SYSTEM ORDERING INFORMATION

- | | |
|------------------|--|
| DCE10D-912-NF | Die Cast Enclosure with detachable 900-928MHz 12dBi panel antenna |
| DCE10D-2419-NF | Die Cast Enclosure with detachable 2400-2700MHz 19dBi panel antenna |
| DCE10D-4924-NF | Die Cast Enclosure with detachable 4940-5850MHz 24dBi panel antenna |
| DCE10I-985-xxxx | Die Cast Enclosure with integrated 900-928MHz 8dBi panel antenna |
| DCE10I-2416-xxxx | Die Cast Enclosure with integrated 2400-2700Mhz 16dBi antenna |
| DCE10I-4919-xxxx | Die Cast Enclosure with integrated 4940-5850Mhz 19dBi antenna |
| DCE10I-2451-xxxx | Die Cast Enclosure with integrated 2400-2485MHz and 4900-5850MHz 16dBi antenna |
| DCE10-H-001 | Hinged die-cast enclosure only |

(xxxx = connector type - NF, SFMF, RSMM, MCM, MMCXP, RTNM, RMMXP, SSMB and UFL)

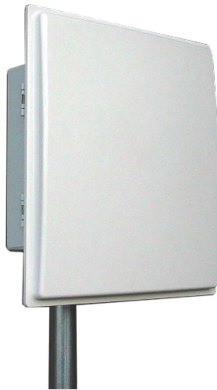
Americas: +1.847.839.6907
IAS-AmericasEastSales@lairdtech.com

Europe: +44.1628.858941
IAS-EUSales@lairdtech.com

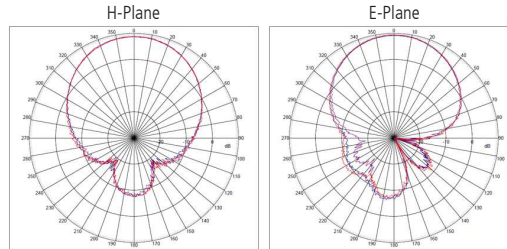
Asia: +86.21.5855.0827.127
IAS-AsiaSales@lairdtech.com

www.lairdtech.com

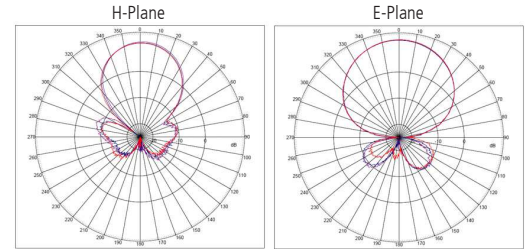
ANTENNA PATTERNS



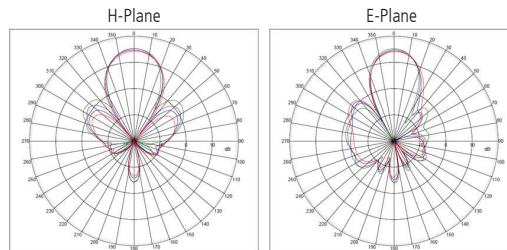
Integrated 10x10 902-928 MHz



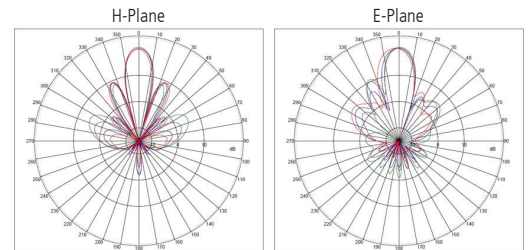
Detachable 14x16 902-928 MHz



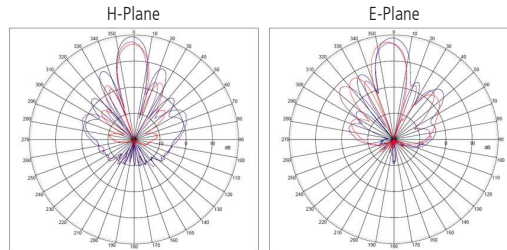
Integrated 10x10 2.4-2.7 GHz



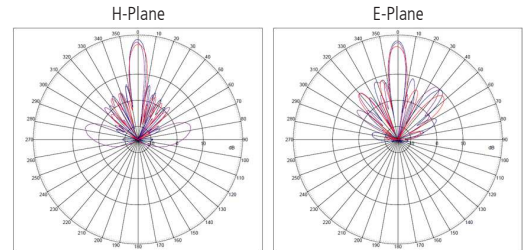
Detachable 14x16 2.4-2.7 GHz



Integrated 10x10 4.9-5.875 GHz

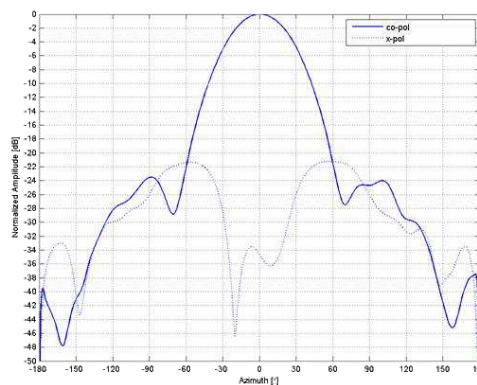


Detachable 14x16 4.9-5.85 GHz

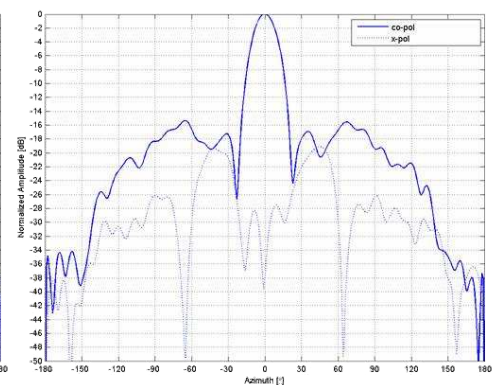


DUAL BAND PATTERNS

2400-2485 MHz



5150-5850 MHz



ANT-DS-10x10-DCE 09115

Any information furnished by Laird, Inc. and its agents is believed to be accurate and reliable. All specifications are subject to change without notice. Responsibility for the use and application of Laird materials rests with the end user, since Laird and its agents cannot be aware of all potential uses. Laird Technologies makes no warranties as to the fitness, merchantability or suitability of any Laird materials or products for any specific or general uses. Laird shall not be liable for incidental or consequential damages of any kind. All Laird products are sold pursuant to the Laird Terms and Conditions of sale in effect from time to time, a copy of which will be furnished upon request. © Copyright 2015 Laird, Inc. All Rights Reserved. Laird, Laird Technologies, the Laird Technologies Logo, and other marks are trade marks or registered trade marks of Laird Inc. or an affiliate company thereof. Other product or service names may be the property of third parties. Nothing herein provides a license under any Laird or any third party intellectual property rights.