



Chipsmall Limited consists of a professional team with an average of over 10 year of expertise in the distribution of electronic components. Based in Hongkong, we have already established firm and mutual-benefit business relationships with customers from,Europe,America and south Asia,supplying obsolete and hard-to-find components to meet their specific needs.

With the principle of "Quality Parts,Customers Priority,Honest Operation,and Considerate Service",our business mainly focus on the distribution of electronic components. Line cards we deal with include Microchip,ALPS,ROHM,Xilinx,Pulse,ON,Everlight and Freescale. Main products comprise IC,Modules,Potentiometer,IC Socket,Relay,Connector.Our parts cover such applications as commercial,industrial, and automotives areas.

We are looking forward to setting up business relationship with you and hope to provide you with the best service and solution. Let us make a better world for our industry!



Contact us

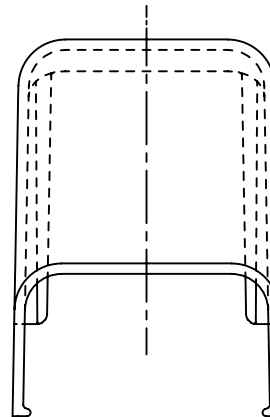
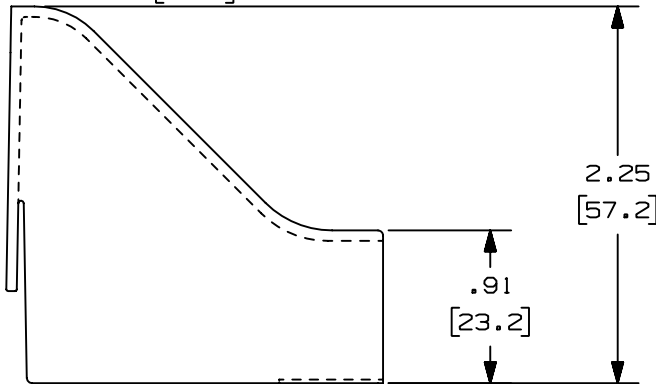
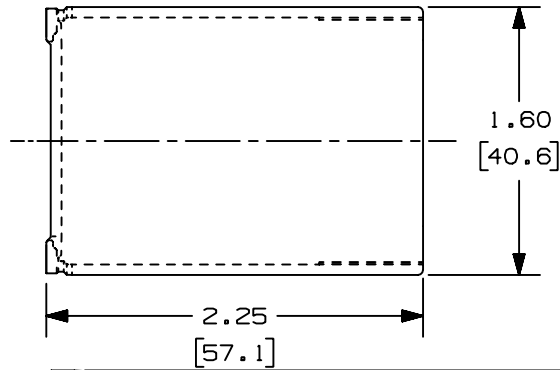
Tel: +86-755-8981 8866 Fax: +86-755-8427 6832

Email & Skype: info@chipsmall.com Web: www.chipsmall.com

Address: A1208, Overseas Decoration Building, #122 Zhenhua RD., Futian, Shenzhen, China



THIS COPY IS PROVIDED ON A RESTRICTED BASIS AND IS NOT TO BE USED IN ANY WAY DETRIMENTAL TO THE INTERESTS OF PANDUIT CORP.



PART NAME	PANDUIT P/N *	COLOR	WEIGHT
DROP CEILING FITTING	DCF10WH-X	WHITE	2.65 LB/100 PCS. (1203g/100 PCS.)
	DCF10EI-X	ELECTRICAL IVORY	
	DCF10IG-X	INTERNATIONAL GRAY	
	DCF10IW-X	INTERNATIONAL WHITE	

△ F

NOTES:

*1. SEE CURRENT PRICE SHEET FOR PART NUMBER SUFFIX DESIGNATION FOR PACKAGE SIZE.

△

CAD FILENAME/LAYERS D34017BA_DC_DCF10_02.PRT

							PANDUIT CORP. TINLEY PARK, ILLINOIS	
							DROP CEILING FITTING (DCF10) CUSTOMER DRAWING	
							UNLESS OTHERWISE SPECIFIED, DIMENSIONAL TOLERANCES ARE: (.X) ± (.XXX) ± (.XX) ±.03 [.8] ANGLES ±	
							UNLESS OTHERWISE SPECIFIED, ALL DIMENSIONS ARE GIVEN IN INCHES, THIRD ANGLE PROJECTION.	
3	07-08-02	JHNU	RMHI	C. REVISED MATERIAL IN DRAWING TITLE BLOCK.	34017-2	RGRO		SCALE FULL
2	11-25-87	LDB	WJB	B. ADDED PART NUMBERS DCF10EI AND DCF10LI.	34017-2	2	WJB	DRAWING NO. 34017-02
1	10-01-86	RN	WJB	A. DCF10 PART NUMBER WAS DCF.	34017-2	1	WJB	DWG SIZE A
R	06-11-86	RN	WJB	RELEASED TO PRODUCTION	34017-2	R	WJB	
REV	DATE	BY	CHK	DESCRIPTION	ECN	R	CUST	SUP

PANDUIT

CORP. TINLEY PARK, ILLINOIS

DROP CEILING FITTING
(DCF10)
CUSTOMER DRAWING

UNLESS OTHERWISE SPECIFIED, DIMENSIONAL TOLERANCES ARE:
(.X) ± (.XXX) ±
(.XX) ±.03 [.8] ANGLES ±

UNLESS OTHERWISE SPECIFIED, ALL DIMENSIONS ARE GIVEN IN INCHES, THIRD ANGLE PROJECTION.

DRAWN BY RN MAT'L: ABS

DATE 06-04-86

CHK'D WJB

SCALE FULL

DRAWING NO. 34017-02

DWG SIZE A

△