



Chipsmall Limited consists of a professional team with an average of over 10 year of expertise in the distribution of electronic components. Based in Hongkong, we have already established firm and mutual-benefit business relationships with customers from,Europe,America and south Asia,supplying obsolete and hard-to-find components to meet their specific needs.

With the principle of “Quality Parts,Customers Priority,Honest Operation,and Considerate Service”,our business mainly focus on the distribution of electronic components. Line cards we deal with include Microchip,ALPS,ROHM,Xilinx,Pulse,ON,Everlight and Freescale. Main products comprise IC,Modules,Potentiometer,IC Socket,Relay,Connector.Our parts cover such applications as commercial,industrial, and automotives areas.

We are looking forward to setting up business relationship with you and hope to provide you with the best service and solution. Let us make a better world for our industry!



Contact us

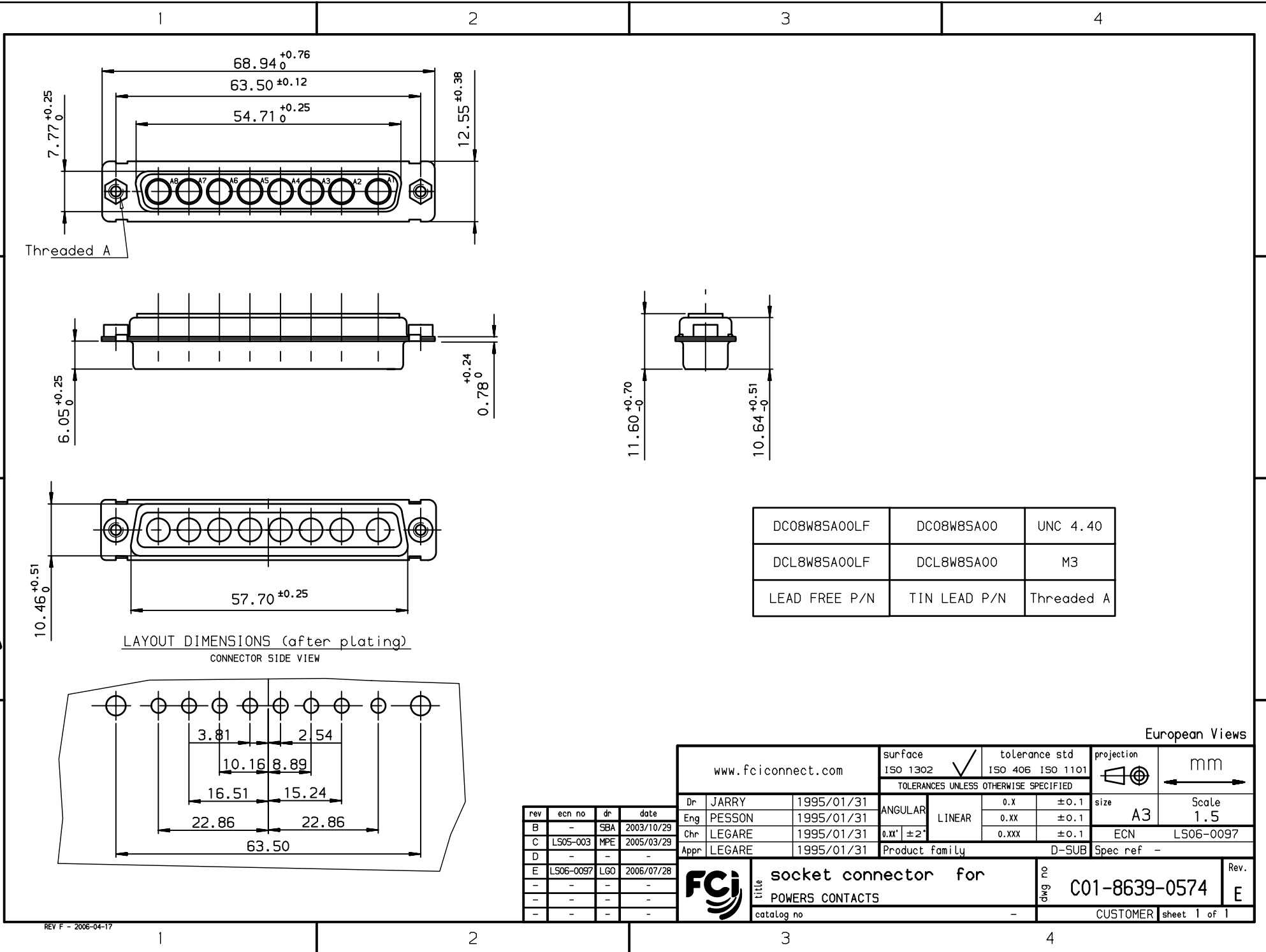
Tel: +86-755-8981 8866 Fax: +86-755-8427 6832

Email & Skype: info@chipsmall.com Web: www.chipsmall.com

Address: A1208, Overseas Decoration Building, #122 Zhenhua RD., Futian, Shenzhen, China



Copyright FCJ



DC08W8SA00LF	DC08W8SA00	UNC 4.40
DCL8W8SA00LF	DCL8W8SA00	M3
LEAD FREE P/N	TIN LEAD P/N	Threaded A

rev	ecn no	dr	date
B	-	SBA	2003/10/29
C	LS05-003	MPE	2005/03/29
D	-	-	-
E	LS06-0097	LGO	2006/07/28
-	-	-	-
-	-	-	-
-	-	-	-

www.fciconnect.com		surface ISO 1302 <input checked="" type="checkbox"/>	tolerance std ISO 406 ISO 1101	projection 	mm
TOLERANCES UNLESS OTHERWISE SPECIFIED					
Dr	JARRY	1995/01/31	ANGULAR	0.X	± 0.1
Eng	PESSON	1995/01/31	LINEAR	0.XX	± 0.1
Chr	LEGARE	1995/01/31	0.XX' $\pm 2'$	0.XXX	± 0.1
Appr	LEGARE	1995/01/31	Product family	D-SUB	Spec ref -
title socket connector for POWERS CONTACTS			dwg no C01-8639-0574	Rev. E	
catalog no			CUSTOMER	sheet 1 of 1	

REV F - 2006-04-17