



Chipsmall Limited consists of a professional team with an average of over 10 year of expertise in the distribution of electronic components. Based in Hongkong, we have already established firm and mutual-benefit business relationships with customers from,Europe,America and south Asia,supplying obsolete and hard-to-find components to meet their specific needs.

With the principle of “Quality Parts,Customers Priority,Honest Operation,and Considerate Service”,our business mainly focus on the distribution of electronic components. Line cards we deal with include Microchip,ALPS,ROHM,Xilinx,Pulse,ON,Everlight and Freescale. Main products comprise IC,Modules,Potentiometer,IC Socket,Relay,Connector.Our parts cover such applications as commercial,industrial, and automotives areas.

We are looking forward to setting up business relationship with you and hope to provide you with the best service and solution. Let us make a better world for our industry!



Contact us

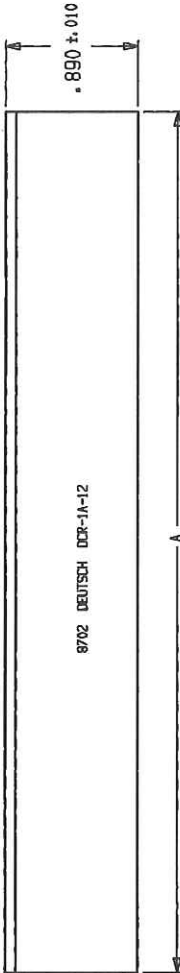
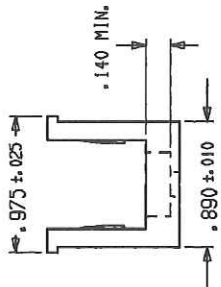
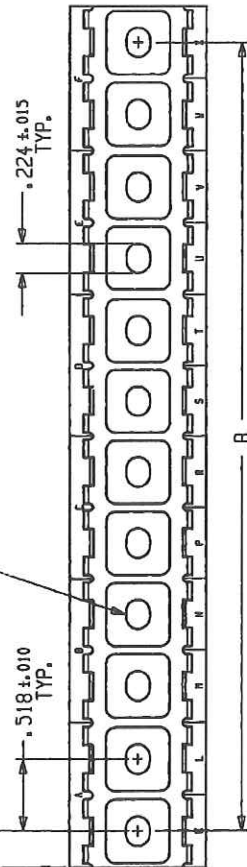
Tel: +86-755-8981 8866 Fax: +86-755-8427 6832

Email & Skype: info@chipsmall.com Web: www.chipsmall.com

Address: A1208, Overseas Decoration Building, #122 Zhenhua RD., Futian, Shenzhen, China



REV	DESCRIPTION
N/C	NEW RELEASE PER E.O. A7417
A	REVISED PER E.O. A7729
B	REVISED PER E.O. A10425
C	REVISED PER E.O. D0369



##	A ±.015	B ±.010	WEIGHT (gms.)	WEIGHT (Ozs.)
02	1.036	.518	5.30	.19
03	1.554	1.036	7.95	.28
04	2.072	1.554	10.60	.37
05	2.590	2.072	13.25	.47
06	3.108	2.590	15.90	.56
07	3.626	3.108	18.55	.65
08	4.144	3.626	21.20	.75
09	4.662	4.144	23.85	.84
10	5.180	4.662	26.50	.93
11	5.698	5.180	29.15	1.03
12	6.216	5.698	31.80	1.12
13	6.734	6.216	34.45	1.21
14	7.252	6.734	37.10	1.31
15	7.770	7.252	39.75	1.40
16	8.288	7.770	42.40	1.50

##	A ±.015	B ±.010	WEIGHT (gms.)	WEIGHT (Ozs.)
17	8.806	8.288	45.05	1.59
18	9.324	8.806	47.70	1.68
19	9.842	9.324	50.35	1.78
20	10.360	9.842	53.00	1.87

NEW
C DCR-1*-**

- MATERIAL: THERMOPLASTIC (C)
- THE COMPOSITE RAIL MEETS OR EXCEEDS THE MECHANICAL AND ENVIRONMENTAL REQUIREMENTS OF MIL-T-81714.
- OPERATING TEMPERATURE: -55°C TO +175°C. MAX. PULLOUT LOAD OF 10 LBS. AT +175°C.
- RAIL PART NO. BREAKDOWN:
DCR-1 * - **
LENGTH
FINISH: A = BLACK COMPOSITE
BASIC IDENTIFICATION

NOTE: 1. DIMENSIONS ARE IN INCHES UNLESS OTHERWISE SPECIFIED.

CP	MAST CODE	16
DEUTSCH DEUTSCHES KONSTRUKTIONSBÜRO Municipal Airport Banning, California		
C	CODE	DCR-1*-**
DWG SIZE	1119	SHEET 1 OF 1
COMPOSITE RAIL		
CTJ		
ENVELOPE		
SIGNATURE & DATE		
DR	L. STOLLE	9/30/87
CHK	L. STOLLE	12-14-87
PE	L. STOLLE	9/30/87
APPRO	L. STOLLE	12/14/87
SCALE		