



Chipsmall Limited consists of a professional team with an average of over 10 year of expertise in the distribution of electronic components. Based in Hongkong, we have already established firm and mutual-benefit business relationships with customers from,Europe,America and south Asia,supplying obsolete and hard-to-find components to meet their specific needs.

With the principle of “Quality Parts,Customers Priority,Honest Operation,and Considerate Service”,our business mainly focus on the distribution of electronic components. Line cards we deal with include Microchip,ALPS,ROHM,Xilinx,Pulse,ON,Everlight and Freescale. Main products comprise IC,Modules,Potentiometer,IC Socket,Relay,Connector.Our parts cover such applications as commercial,industrial, and automotives areas.

We are looking forward to setting up business relationship with you and hope to provide you with the best service and solution. Let us make a better world for our industry!



Contact us

Tel: +86-755-8981 8866 Fax: +86-755-8427 6832

Email & Skype: info@chipsmall.com Web: www.chipsmall.com

Address: A1208, Overseas Decoration Building, #122 Zhenhua RD., Futian, Shenzhen, China

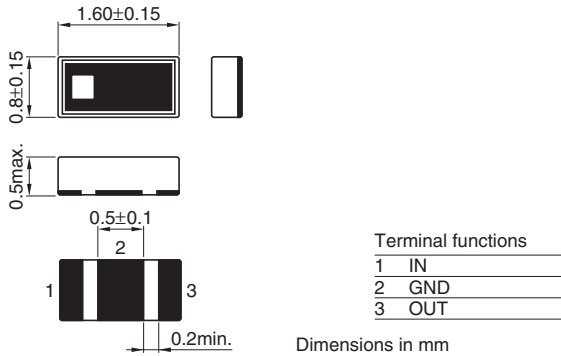


Multilayer Chip Band Pass Filters For 2.4GHz W-LAN/Bluetooth

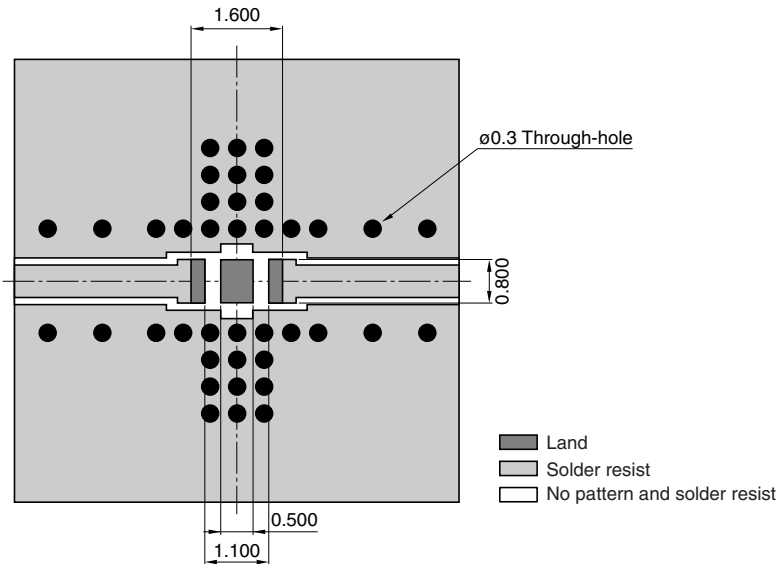
Conformity to RoHS Directive

DEA Series DEA162450BT-2139A1

SHAPES AND DIMENSIONS



RECOMMENDED PC BOARD PATTERNS



Line width be designed to match 50Ω characteristic impedance depending on PCB material and thickness.

ELECTRICAL CHARACTERISTICS

Item		Typical value
Frequency range(Pass band)	2400 to 2500MHz	2400 to 2500MHz
Insertion loss	[+25°C]	3.0dB max.
	[-40 to +85°C]	—
VSWR	[2400 to 2500MHz]	2.32 max.
	[869 to 894MHz]	34dB min.
	[925 to 960MHz]	33dB min.
	[1570 to 1580MHz]	30dB min.
	[1710 to 1785MHz]	30dB min.
	[1805 to 1850MHz]	30dB min.
	[1930 to 1990MHz]	30dB min.
Attenuation	[2110 to 2170MHz]	25dB min.
	[2110 to 2170MHz]	25dB min.
	[2110 to 2170MHz]	25dB min.
	[2110 to 2170MHz]	25dB min.
	[2110 to 2170MHz]	25dB min.
Temperature range	Operating	-40 to +85°C
	Storage	-40 to +85°C

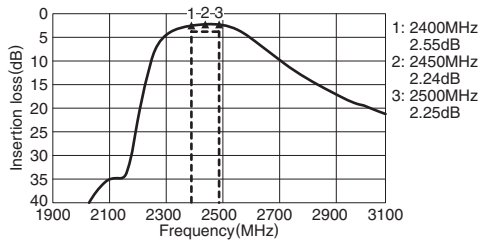
• Ta:+25°C

• Conformity to RoHS Directive: This means that, in conformity with EU Directive 2002/95/EC, lead, cadmium, mercury, hexavalent chromium, and specific bromine-based flame retardants, PBB and PBDE, have not been used, except for exempted applications.

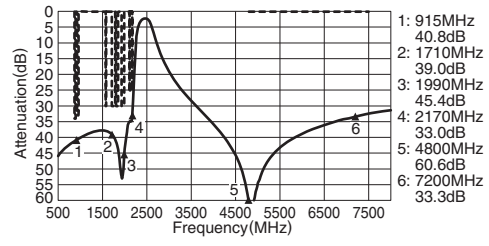
• All specifications are subject to change without notice.

FREQUENCY CHARACTERISTICS

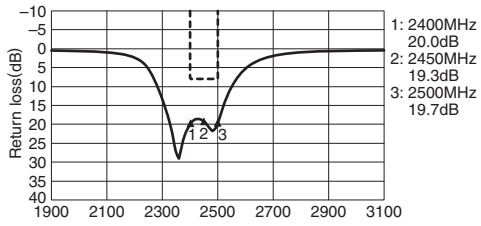
INSERTION LOSS



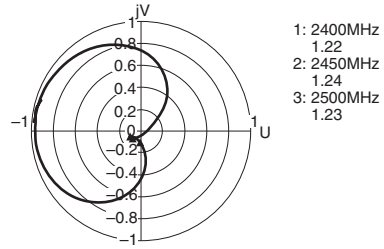
ATTENUATION



RETURN LOSS



VSWR



• All specifications are subject to change without notice.