



Chipsmall Limited consists of a professional team with an average of over 10 year of expertise in the distribution of electronic components. Based in Hongkong, we have already established firm and mutual-benefit business relationships with customers from,Europe,America and south Asia,supplying obsolete and hard-to-find components to meet their specific needs.

With the principle of "Quality Parts,Customers Priority,Honest Operation,and Considerate Service",our business mainly focus on the distribution of electronic components. Line cards we deal with include Microchip,ALPS,ROHM,Xilinx,Pulse,ON,Everlight and Freescale. Main products comprise IC,Modules,Potentiometer,IC Socket,Relay,Connector.Our parts cover such applications as commercial,industrial, and automotives areas.

We are looking forward to setting up business relationship with you and hope to provide you with the best service and solution. Let us make a better world for our industry!



## Contact us

Tel: +86-755-8981 8866 Fax: +86-755-8427 6832

Email & Skype: info@chipsmall.com Web: www.chipsmall.com

Address: A1208, Overseas Decoration Building, #122 Zhenhua RD., Futian, Shenzhen, China



**Multilayer Balanced Band Pass Filter**  
**Part Number : DEA202450BT-7041E1**

**[FEATURES]**

- Miniature Balanced Band Pass Filter
- Matched to CSR BC4 IC
- Package size: 2.0 x 1.25mm
- Low Profile : 0.7mm max. height

**[PIN CONFIGURATION]**

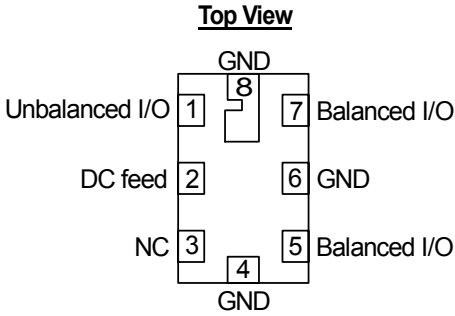


Fig 1

**[MECHANICAL DIMENSIONS]**

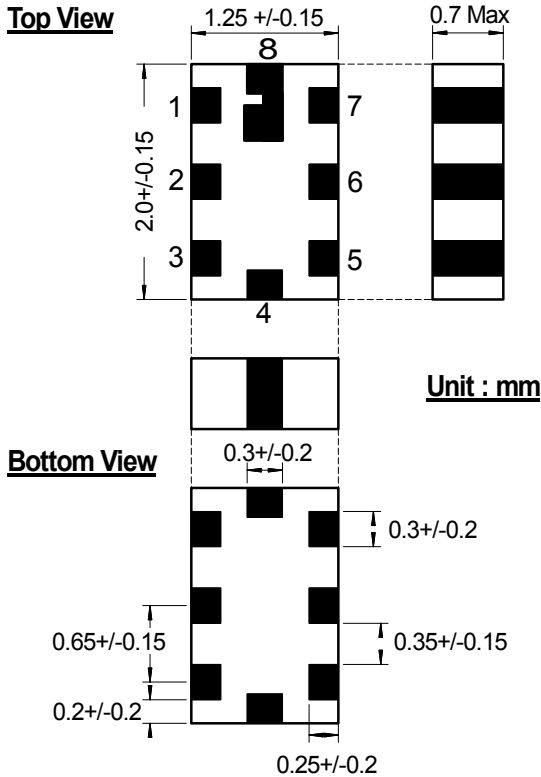


Fig 2

DEA202450BT-7041E1

## [ELECTRICAL PERFORMANCE]

Temperature +25°C unless otherwise specified

Parameter	Freq. (MHz)	TDK Specification	Unit
Insertion Loss	2402 – 2480	5.0 max.	dB
Single ended port characteristic impedance	-	Matched to CSR BC4 IC Reference board	ohm
Balanced ports impedance, nominal value	-	Matched to CSR BC4 IC Reference board	ohm
Return Loss: Unbalanced port	2402 – 2480	10 min	dB
Return Loss: Balanced port (with respect to nominal balanced impedance)		10 min	dB
Attenuation	880 – 960	35 min	dB
	1710 – 1880	25 min	dB
	1880 – 1990	25 min	dB
	2110 – 2170	20 min	dB
	4804 – 4960	30 min	dB
Phase Difference at Balanced Port	2402 – 2480	180 ± 15.0	Deg.
Amplitude Imbalance at Balanced Port	2402 – 2480	0 ± 2.0	dB

Storage Temperature : -40°C to +85°C

DEA202450BT-7041E1

**[LAND PATTERN (TDK Recommended)]**

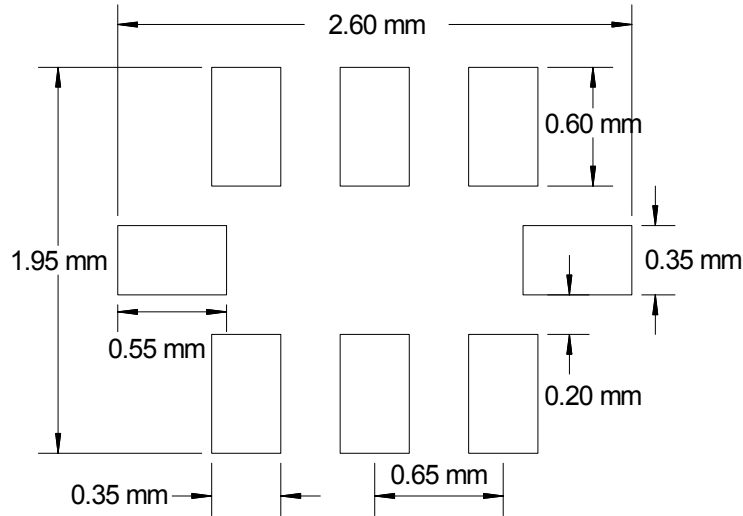


Fig 3

**Note1:** Pin 2 of the filter provides a DC feed connection to the balanced ports. In the event that this function is used, Pin 2 should be connected to ground using a 15pF de-coupling capacitor.

**Note2:** In the event that the pin 2 function is not used, the pin should be left unconnected.

**[PCB TOP METAL LAYER]**

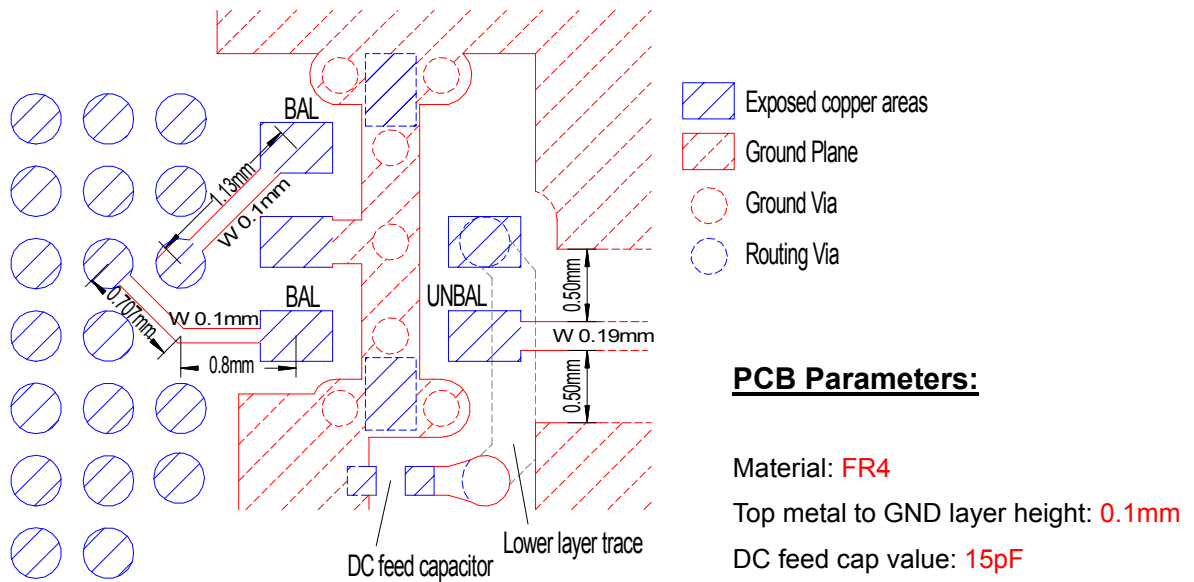


Fig 4

DEA202450BT-7041E1

# [TAPE & REEL INFORMATION]

## Carrier Tape

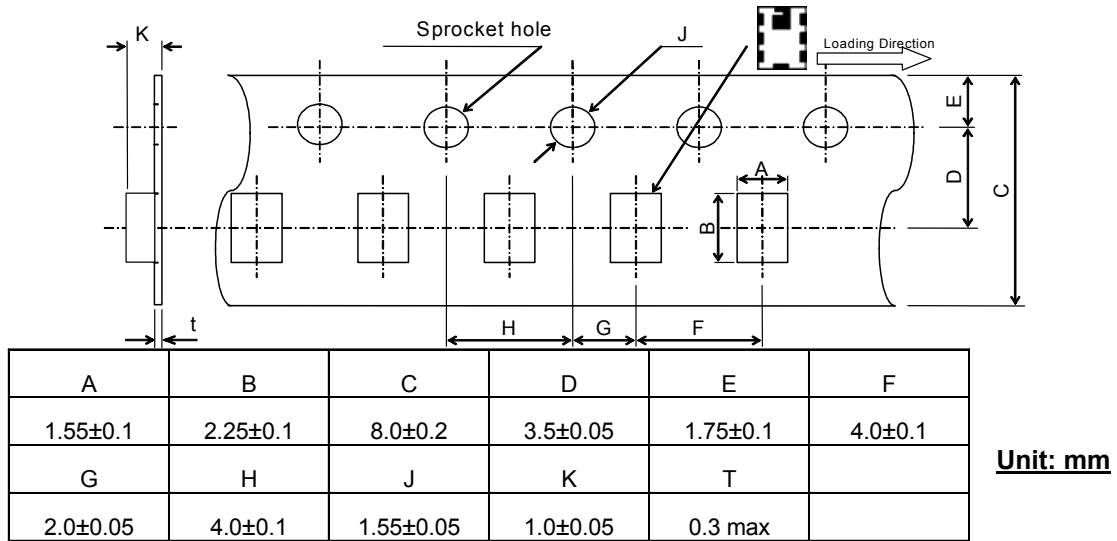
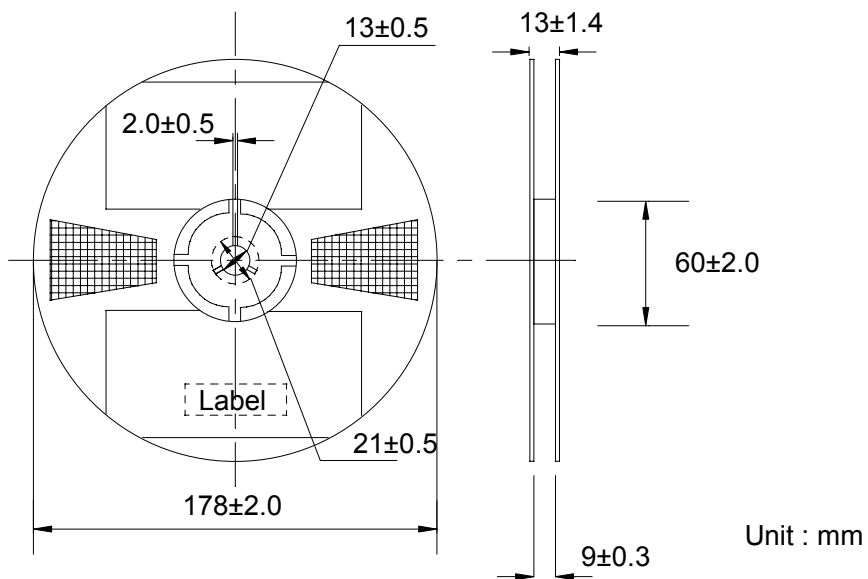


Fig 5

## Reel Dimensions



Standard package quantities: 2000pcs/reel

Fig 6

DEA202450BT-7041E1

## **[RoHS STATEMENT]**

*“In conformity with EU directive 2002/95/EC, lead, cadmium, mercury, hexavalent chromium and specific bromine-based flame retardants, PBB and PBDE, have not been used in the materials of this part.”*

## **[CONTACT INFORMATION]**

Any inquires about this part can be addressed to the following TDK sales representatives:

Mr. Conor Duffy. Email: [cduffy@tdk.de](mailto:cduffy@tdk.de)

Mr. Graeme Cruickshanks. Email: [Cruickshanks@tdk.de](mailto:Cruickshanks@tdk.de)

**[END OF DOCUMENT]**

DEA202450BT-7041E1