



Chipsmall Limited consists of a professional team with an average of over 10 year of expertise in the distribution of electronic components. Based in Hongkong, we have already established firm and mutual-benefit business relationships with customers from,Europe,America and south Asia,supplying obsolete and hard-to-find components to meet their specific needs.

With the principle of "Quality Parts,Customers Priority,Honest Operation,and Considerate Service",our business mainly focus on the distribution of electronic components. Line cards we deal with include Microchip,ALPS,ROHM,Xilinx,Pulse,ON,Everlight and Freescale. Main products comprise IC,Modules,Potentiometer,IC Socket,Relay,Connector.Our parts cover such applications as commercial,industrial, and automotives areas.

We are looking forward to setting up business relationship with you and hope to provide you with the best service and solution. Let us make a better world for our industry!



Contact us

Tel: +86-755-8981 8866 Fax: +86-755-8427 6832

Email & Skype: info@chipsmall.com Web: www.chipsmall.com

Address: A1208, Overseas Decoration Building, #122 Zhenhua RD., Futian, Shenzhen, China



REFERENCE SPECIFICATIONS

-NFC 93425 (in compliance with HE 501)

PHYSICAL CHARACTERISTICS

- INSULATOR MATERIAL: THERMOPLASTIC UL94V0
- CONTACT MATERIAL: BRASS,
GOLD OVER NICKEL
- ACCESSORIES: STEEL FOR METAL BRACKETS,
cadmium plated yellow passivation
THERMOPLASTIC UL94V0 FOR PLASTIC BRACKETS
BRASS FOR OTHERS ACCESSORIES,
cadmium plated yellow passivation
- SHELLS: STEEL,
cadmium plated yellow passivation

ELECTRICAL CHARACTERISTICS

- NOMINAL CURRENT: 7.5A
- CONTACT RESISTANCE: <=7.3 m Ohms
- CONTACT/CONTACT : >=1000 V
- CONTACT/GROUND : >=1200 V
- INSULATION RESISTANCE: >=5000 MOhms

ENVIRONMENTAL CHARACTERISTICS

- CLIMATIC CATEGORY: 55/125/56
TEMPERATURE RANGE -55°C TO +125°C
DAMP HEAT STEADY STATE 56 DAYS
SALT SPRAY 48 HOURS

MECHANICAL CHARACTERISTICS

- RETENTION AGAINST TORQUE: -Threaded insert:0.7 N.m min
-Female screw:0.5 N.m min

DBML25P500M

Series

Shell size: **E A B C D**
(see sheet 3)

Front accessory definition
(see sheet 2)

- Blank** :without accessory
- L** :threaded insert M3
- O** :threaded insert UNC 4-40
- V** :female screw UNC 4-40

Layout of contacts (see sheet 3)

9,15,25,37,50

Contacts

- P** :Pin

Termination type

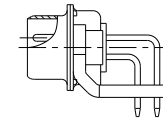
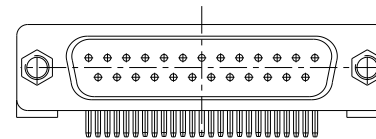
- 5** Right angle/Europe standard

Plating

- 00** Right angle 500 matings/unmatings
- 43** Right angle 500 matings/unmatings
for harsh environment

PCB accessories definition(see sheet 2)

- Blank** :Plastic brackets
- C** :Without brackets
- M** :Metal brackets

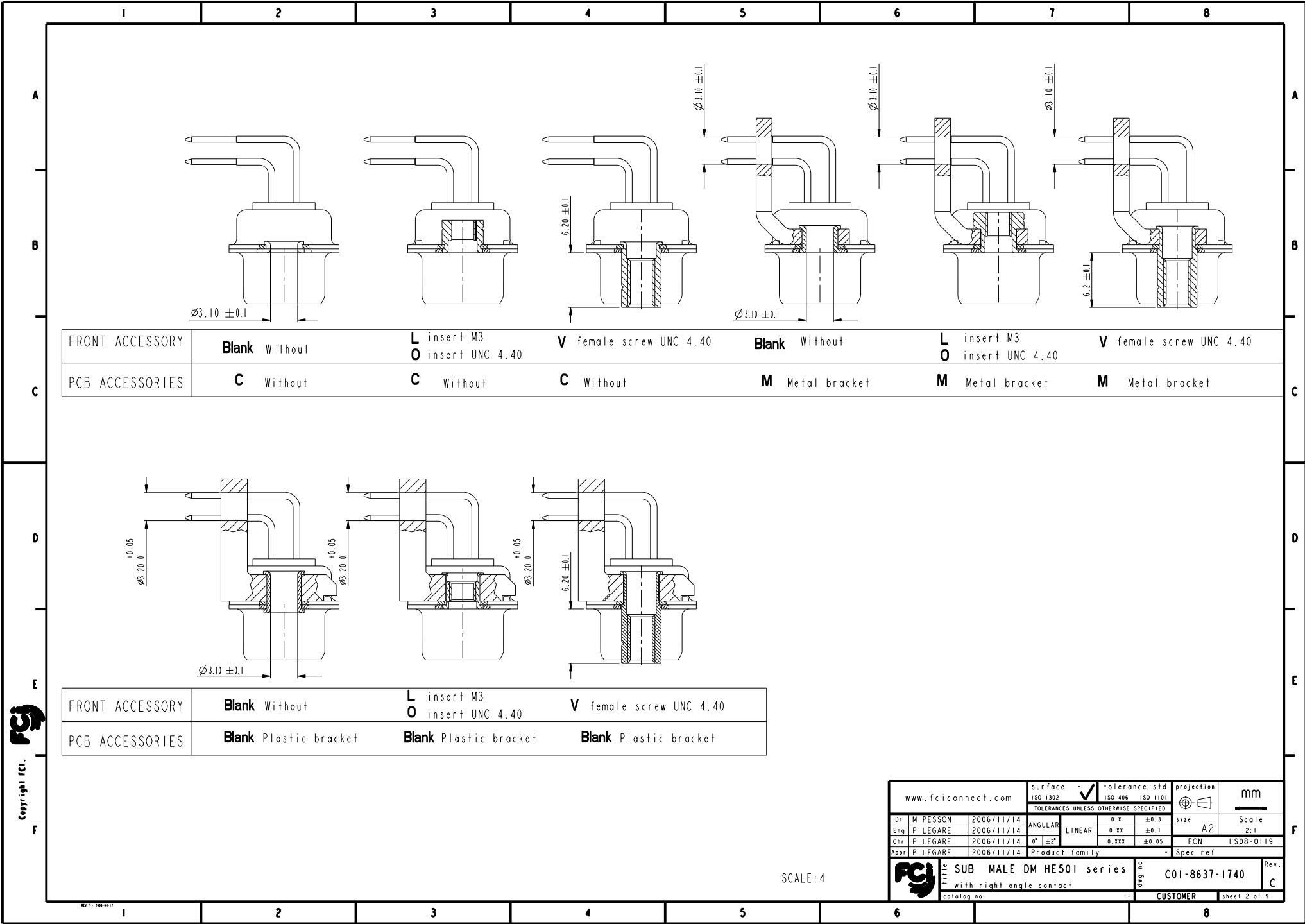


25 WAY for Example

| rev | acc no | dr | date |
|-----|-----------|-----|------------|
| A | LS06-0174 | MPE | 2006/11/14 |
| B | LS07-0068 | MPE | 2007/03/02 |
| C | LS08-0119 | MPE | 2008/04/29 |
| - | - | - | - |
| - | - | - | - |

| | | | | | |
|--------------------|--|---------------------------------------|------------------|--------------|---------------|
| www.fciconnect.com | | surface | tolerance std | projection | mm |
| | | ISO 1302 | ISO 406 ISO 1101 | | |
| | | TOLERANCES UNLESS OTHERWISE SPECIFIED | | | |
| | | ANGULAR | 0.X ±0.3 | size | A2 |
| | | LINEAR | 0.XX ±0.1 | Scale | 2:1 |
| | | 0° ±2' | 0.XXX ±0.05 | ECN | LS08-0119 |
| | | Product family | Spec ref | | |
| | | SUB MALE DM HE501 series | | ang no | C01-8637-1740 |
| | | with right angle contact | | Rev. | C |
| catalog no | | CUSTOMER | | sheet 1 of 9 | |

Copyright FCI



| | | | | | | |
|-----------------|----------------------|--|--------------------------------|------------------------|--|--------------------------------|
| FRONT ACCESSORY | Blank Without | L insert M3 O insert UNC 4.40 | V female screw UNC 4.40 | Blank Without | L insert M3 O insert UNC 4.40 | V female screw UNC 4.40 |
| PCB ACCESSORIES | C Without | C Without | C Without | M Metal bracket | M Metal bracket | M Metal bracket |

| | | | |
|-----------------|------------------------------|--|--------------------------------|
| FRONT ACCESSORY | Blank Without | L insert M3 O insert UNC 4.40 | V female screw UNC 4.40 |
| PCB ACCESSORIES | Blank Plastic bracket | Blank Plastic bracket | Blank Plastic bracket |

| | | | | |
|--------------------------|----------|---------------------------------------|-------------------------------------|------------------|
| www.fciconnect.com | | surface - ISO 1302 | tolerance std ISO 406 - ISO 1101 | projection mm |
| | | TOLERANCES UNLESS OTHERWISE SPECIFIED | | |
| Dr | M PESSON | 2006/11/14 | ANGULAR | 0.X ±0.3 |
| Eng | P LEGARE | 2006/11/14 | LINEAR | 0.XX ±0.1 |
| Chr | P LEGARE | 2006/11/14 | ° ±2' | 0.XXX ±0.05 |
| Appr | P LEGARE | 2006/11/14 | Product family | - Spec ref |
| SUB MALE DM HE501 series | | ang no | C01-8637-1740 | |
| with right angle contact | | Rev. | C | |
| catalog no | | CUSTOMER | | sheet 2 of 9 |

SCALE: 4

Copyright fci.

| PART NUMBER | FRONT ACCESSORY | PCB ACCESSORY |
|-------------|-----------------------|-----------------|
| D*MxxP500C | without | without |
| D*MLxxP500C | insert M3 | without |
| D*MOxxP500C | insert UNC 4.40 | without |
| D*MVxxP500C | female screw UNC 4.40 | without |
| D*MxxP500M | without | Metal bracket |
| D*MLxxP500M | insert M3 | Metal bracket |
| D*MOxxP500M | insert UNC 4.40 | Metal bracket |
| D*MVxxP500M | female screw UNC 4.40 | Metal bracket |
| D*MxxP500 | without | Plastic bracket |
| D*MLxxP500 | insert M3 | Plastic bracket |
| D*MOxxP500 | insert UNC 4.40 | Plastic bracket |
| D*MVxxP500 | female screw UNC 4.40 | Plastic bracket |

| | |
|------------|----------------|
| shell size | Contact number |
| # | XX |
| E | 09 |
| A | 15 |
| B | 25 |
| C | 37 |
| D | 50 |

| PART NUMBER | FRONT ACCESSORY | PCB ACCESSORY |
|-------------|-----------------------|-----------------|
| D*MxxP543C | without | without |
| D*MLxxP543C | insert M3 | without |
| D*MOxxP543C | insert UNC 4.40 | without |
| D*MVxxP543C | female screw UNC 4.40 | without |
| D*MxxP543M | without | Metal bracket |
| D*MLxxP543M | insert M3 | Metal bracket |
| D*MOxxP543M | insert UNC 4.40 | Metal bracket |
| D*MVxxP543M | female screw UNC 4.40 | Metal bracket |
| D*MxxP543 | without | Plastic bracket |
| D*MLxxP543 | insert M3 | Plastic bracket |
| D*MOxxP543 | insert UNC 4.40 | Plastic bracket |
| D*MVxxP543 | female screw UNC 4.40 | Plastic bracket |

CROSS REFERENCES HE501 and FCI

| HE501 P/N | FCI P/N | FRONT ACCESSORY | PCB ACCESSORY |
|-------------|------------|-----------------|-----------------|
| HE501PxxVP6 | D*MxxP500 | without | Plastic bracket |
| HE501MxxVP6 | D*MxxP500M | without | Metal bracket |

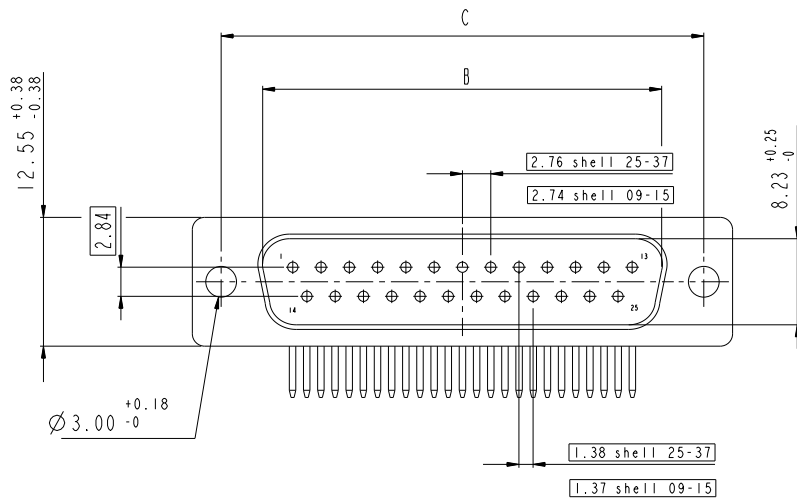
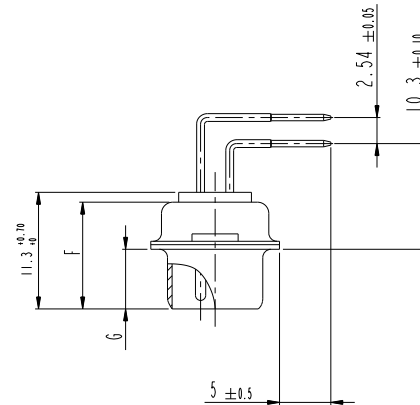
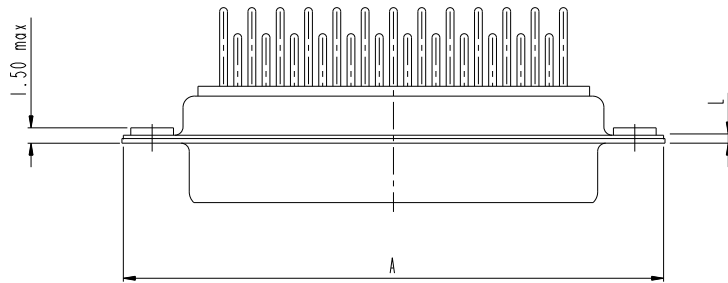
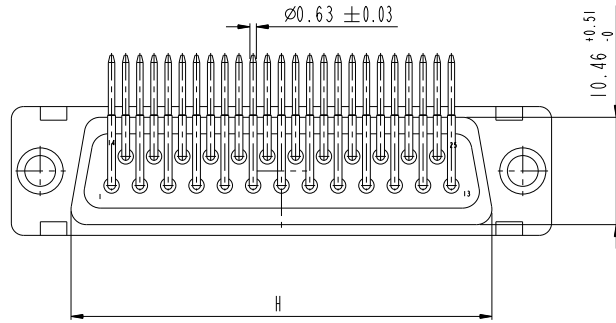
Copyright FCI

| | | | | |
|--------------------------|------------|---------------------------------------|-----------------------------------|-------------------|
| www.fciconnect.com | | surface - ISO 1302 | tolerance std ISO 406 ISO 1101 | projection mm |
| | | TOLERANCES UNLESS OTHERWISE SPECIFIED | | |
| Dr M PESSON | 2006/11/14 | ANGULAR | 0.X ±0.3 | size A2 Scale 2:1 |
| Eng P LEGARE | 2006/11/14 | LINEAR | 0.XX ±0.1 | ECN LS08-0119 |
| Chr P LEGARE | 2006/11/14 | Ø ±0.2 | 0.XXX ±0.05 | |
| Appr P LEGARE | 2006/11/14 | Product family | Spec ref | |
| SUB MALE DM HE501 series | | ang no | C01-8637-1740 | |
| with right angle contact | | Rev. | C | |
| catalog no | | CUSTOMER | sheet 3 of 9 | |

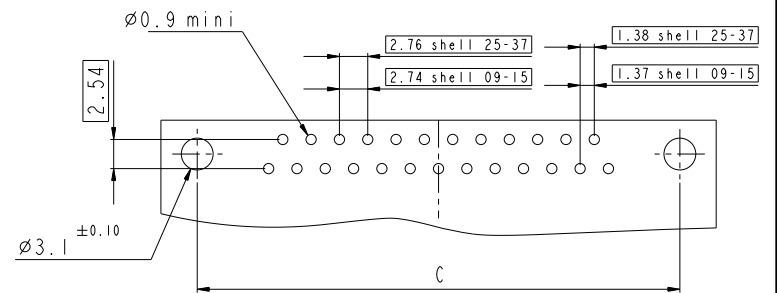
DIMENSION FOR SHELL E,A,B,C WITHOUT BRACKET

Dimensions are in millimeters

| Shell size | Number of contacts | A ^{+0.76} ₋₀ | B ^{+0.25} ₋₀ | C ±0.12 | F ^{+0.57} ₋₀ | G ^{+0.25} ₋₀ | H ^{+0.51} ₋₀ | L ^{+0.22} ₋₀ |
|------------|--------------------|----------------------------------|----------------------------------|---------|----------------------------------|------------------------------------|----------------------------------|----------------------------------|
| E | 09 | 30.43 | 16.79 | 24.99 | 10.47 | 5.9 ^{+0.15} ₋₀ | 19.02 | 0.80 |
| A | 15 | 38.76 | 25.12 | 33.32 | 10.47 | 5.9 ^{+0.15} ₋₀ | 27.25 | 0.80 |
| B | 25 | 52.65 | 38.84 | 47.04 | 10.43 | 5.7 ^{+0.25} ₋₀ | 41.02 | 0.80 |
| C | 37 | 68.94 | 55.30 | 63.50 | 10.56 | 5.7 ^{+0.25} ₋₀ | 57.45 | 0.90 |



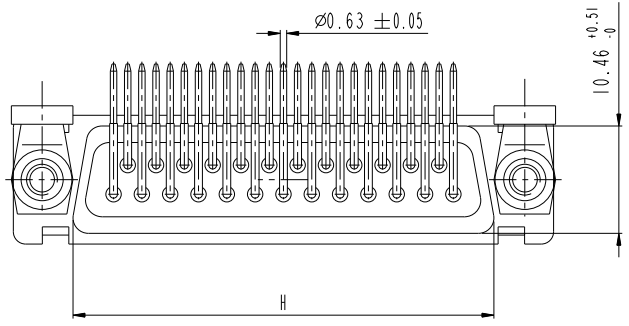
LAYOUT DIMENSIONS



SCALE: 3

| | | | | | |
|--------------------|----------|---------------------------------------|------------------|---------------|-------------------|
| www.fciconnect.com | | surface - | tolerance std | projection | mm |
| | | ISO 1302 | ISO 406 ISO 1101 | | |
| | | TOLERANCES UNLESS OTHERWISE SPECIFIED | | | |
| Dr | M PESSON | 2006/11/14 | ANGULAR | 0.X ±0.3 | size A2 Scale 2:1 |
| Eng | P LEGARE | 2006/11/14 | LINEAR | 0.XX ±0.1 | ECN LS08-0119 |
| Chr | P LEGARE | 2006/11/14 | 0° ±2° | 0.XXX ±0.05 | |
| Appr | P LEGARE | 2006/11/14 | Product family | - | Spec ref |
| | | SUB MALE DM HE501 series | | ang no | Rev. |
| | | with right angle contact | | C01-8637-1740 | C |
| catalog no | | CUSTOMER | | sheet 4 of 9 | |

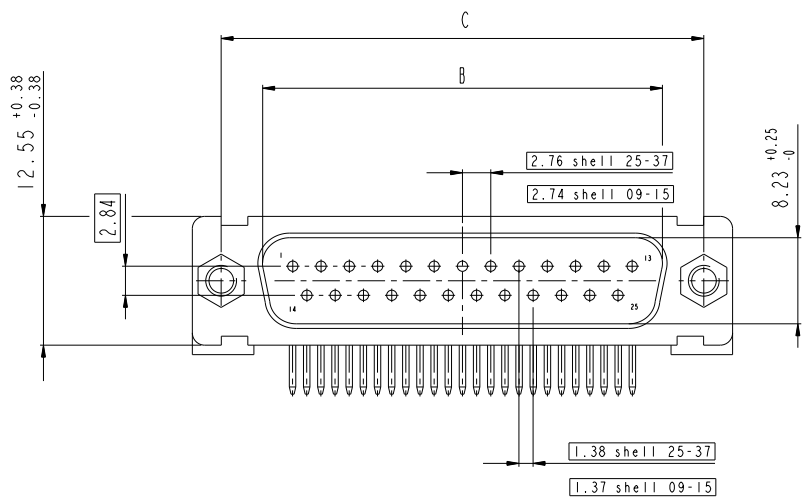
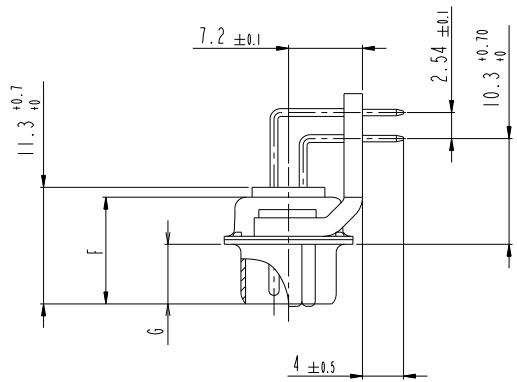
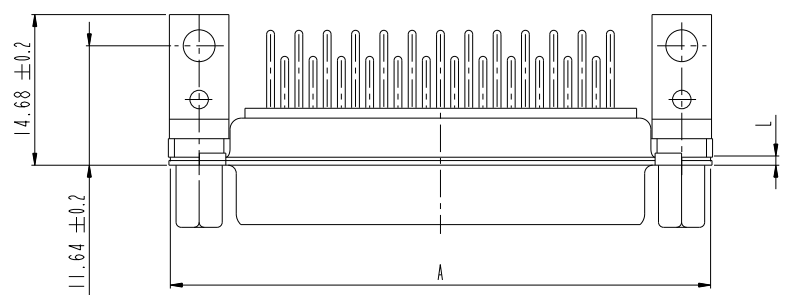
Copyright FCI



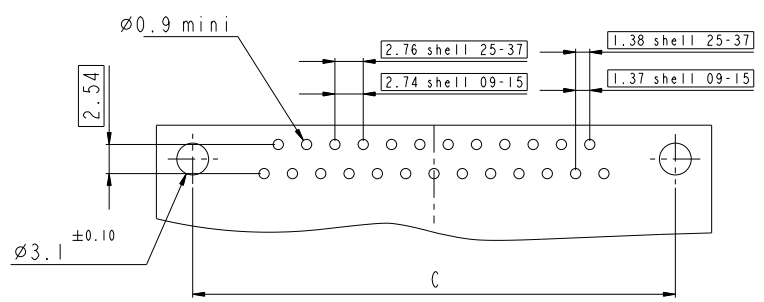
DIMENSION FOR SHELL E,A,B,C WITH METAL BRACKET

Dimensions are in millimeters

| Shell size | Number of contacts | A $\begin{smallmatrix} +0.76 \\ -0 \end{smallmatrix}$ | B $\begin{smallmatrix} +0.25 \\ -0 \end{smallmatrix}$ | C ± 0.12 | F $\begin{smallmatrix} +0.57 \\ -0 \end{smallmatrix}$ | G $\begin{smallmatrix} +0.25 \\ -0 \end{smallmatrix}$ | H $\begin{smallmatrix} +0.51 \\ -0 \end{smallmatrix}$ | L $\begin{smallmatrix} +0.22 \\ -0 \end{smallmatrix}$ |
|------------|--------------------|---|---|--------------|---|---|---|---|
| E | 09 | 30.43 | 16.79 | 24.99 | 10.47 | 5.9 $\begin{smallmatrix} +0.15 \\ -0 \end{smallmatrix}$ | 19.02 | 0.80 |
| A | 15 | 38.76 | 25.12 | 33.32 | 10.47 | 5.9 $\begin{smallmatrix} +0.15 \\ -0 \end{smallmatrix}$ | 27.25 | 0.80 |
| B | 25 | 52.65 | 38.84 | 47.04 | 10.43 | 5.7 $\begin{smallmatrix} +0.25 \\ -0 \end{smallmatrix}$ | 41.02 | 0.80 |
| C | 37 | 68.94 | 55.30 | 63.50 | 10.56 | 5.7 $\begin{smallmatrix} +0.25 \\ -0 \end{smallmatrix}$ | 57.45 | 0.90 |



LAYOUT DIMENSIONS



Copyright fci. FCI

| | | | | |
|--------------------------|------------|---------------------------------------|-----------------------------------|-------------------|
| www.fciconnect.com | | surface - ISO 1302 | tolerance std ISO 406 ISO 1101 | projection mm |
| | | TOLERANCES UNLESS OTHERWISE SPECIFIED | | |
| Dr M PESSON | 2006/11/14 | ANGULAR | 0.X ± 0.3 | size A2 Scale 2:1 |
| Eng P LEGARE | 2006/11/14 | LINEAR | 0.xx ± 0.1 | ECN LS08-0119 |
| Chr P LEGARE | 2006/11/14 | $\sigma^{\circ} \pm 2^{\circ}$ | 0.xxx ± 0.05 | |
| Appr P LEGARE | 2006/11/14 | Product family | - | Spec ref |
| SUB MALE DM HE501 series | | ang no | C01-8637-1740 | |
| with right angle contact | | Rev. | C | |
| catalog no | | CUSTOMER sheet 5 of 9 | | |

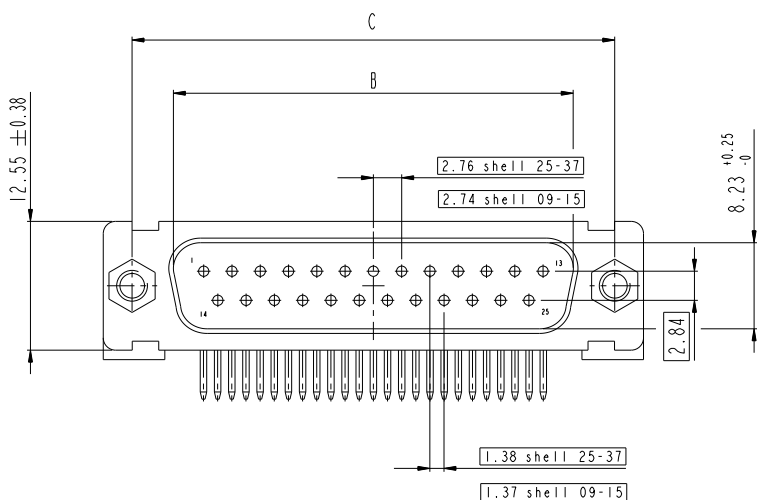
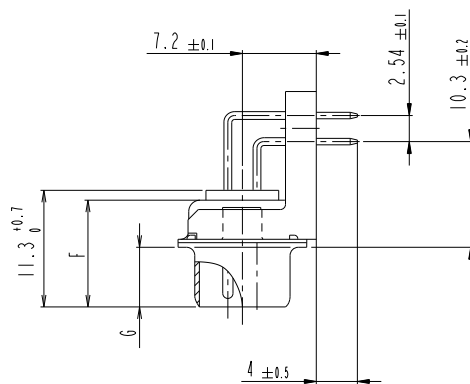
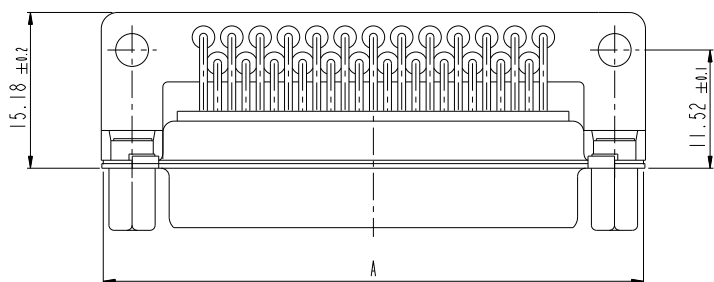
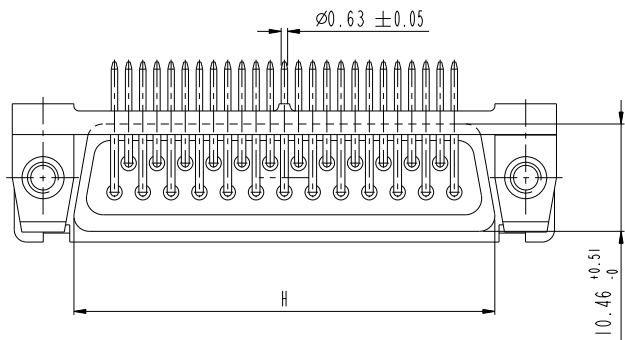
SCALE: 3

I 2 3 4 5 6 7 8

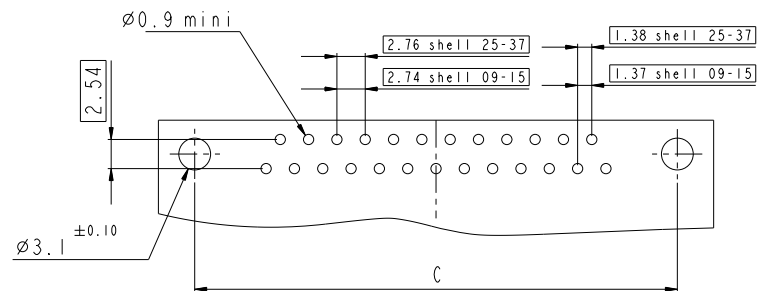
DIMENSION FOR SHELL E,A,B,C WITH PLASTIC BRACKET

Dimensions are in millimeters

| Shell size | Number of contacts | A ^{+0.76} ₋₀ | B ^{+0.25} ₋₀ | C ±0.12 | F ^{+0.57} ₋₀ | G ^{+0.25} ₋₀ | H ^{+0.51} ₋₀ | L ^{+0.22} ₋₀ |
|------------|--------------------|----------------------------------|----------------------------------|---------|----------------------------------|------------------------------------|----------------------------------|----------------------------------|
| E | 09 | 30.43 | 16.79 | 24.99 | 10.47 | 5.9 ^{+0.15} ₋₀ | 19.02 | 0.80 |
| A | 15 | 38.76 | 25.12 | 33.32 | 10.47 | 5.9 ^{+0.15} ₋₀ | 27.25 | 0.80 |
| B | 25 | 52.65 | 38.84 | 47.04 | 10.43 | 5.7 ^{+0.25} ₋₀ | 41.02 | 0.80 |
| C | 37 | 68.94 | 55.30 | 63.50 | 10.56 | 5.7 ^{+0.25} ₋₀ | 57.45 | 0.90 |



LAYOUT DIMENSIONS

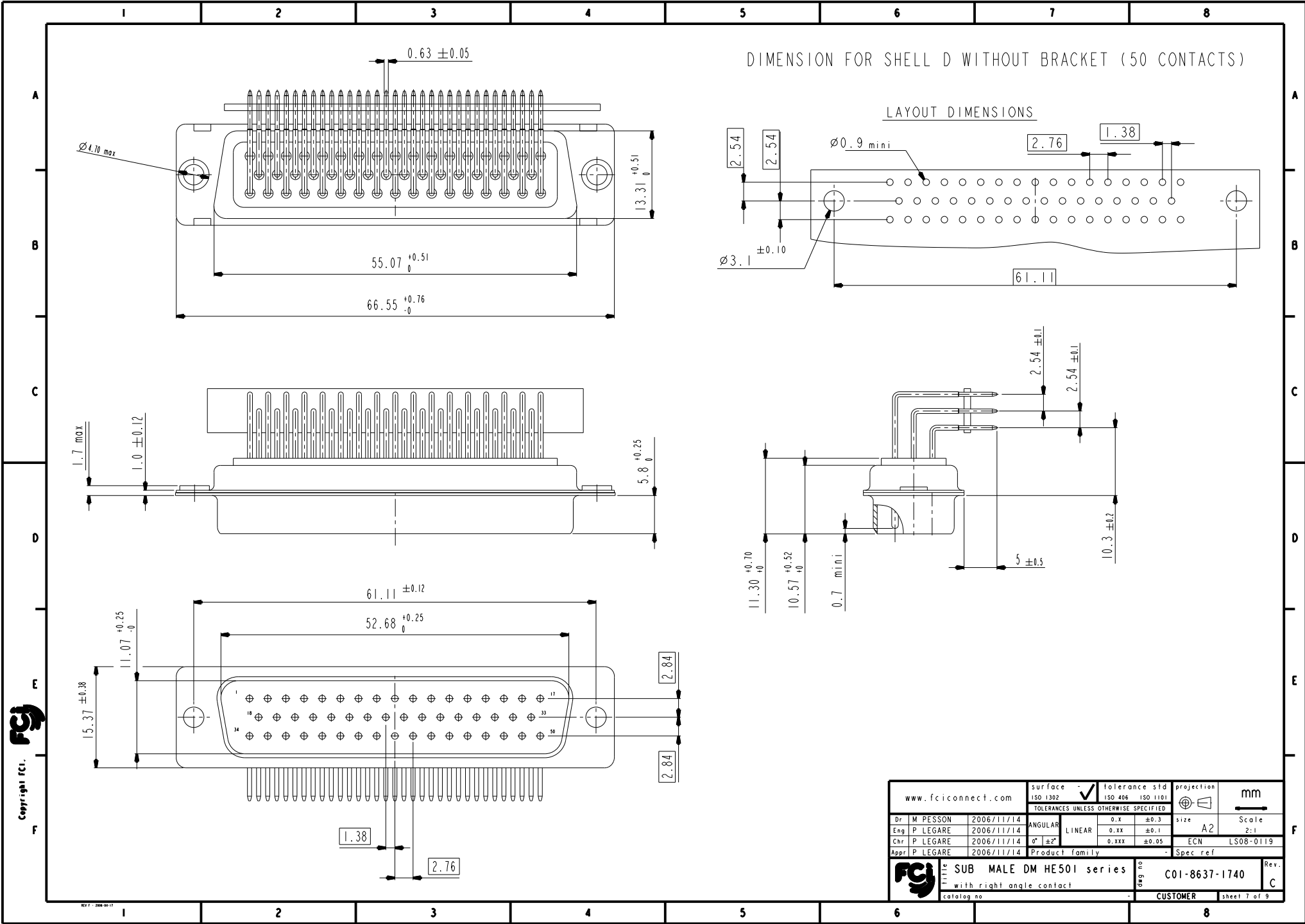


Copyright fci.

| | | | | | |
|---------------------------------------|----------|--------------------------|----------------|-------------|-------------------|
| www.fciconnect.com | | surface - | tolerance std | projection | mm |
| | | ISO 1302 | ISO 406 | ISO 1101 | |
| TOLERANCES UNLESS OTHERWISE SPECIFIED | | | | | |
| Dr | M PESSON | 2006/11/14 | ANGULAR | 0.X ±0.3 | size A2 Scale 2:1 |
| Eng | P LEGARE | 2006/11/14 | LINEAR | 0.XX ±0.1 | |
| Chr | P LEGARE | 2006/11/14 | 0° ±2° | 0.XXX ±0.05 | ECN LS08-0119 |
| Appr | P LEGARE | 2006/11/14 | Product family | | Spec ref |
| SUB MALE DM HE501 series | | with right angle contact | | cat no | C01-8637-1740 |
| catalog no | | CUSTOMER | | Rev. | C |

REV 7 - 2006-04-17

I 2 3 4 5 6 7 8

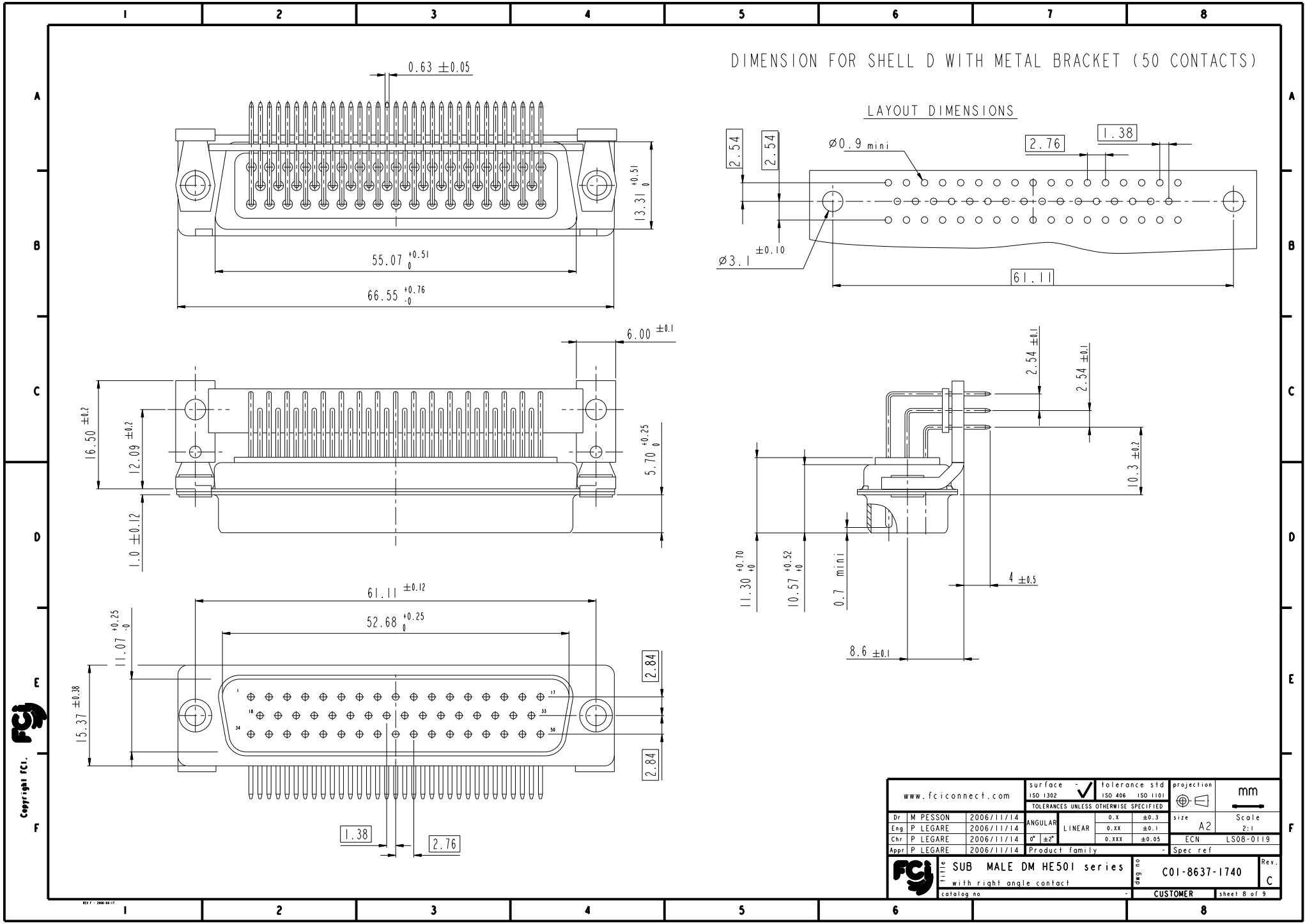


DIMENSION FOR SHELL D WITHOUT BRACKET (50 CONTACTS)

LAYOUT DIMENSIONS

| | | | | |
|--------------------------|------------|---------------------------------------|-----------------------------------|-------------------|
| www.fciconnect.com | | surface - ISO 1302 | tolerance std ISO 406 ISO 1101 | projection mm |
| | | TOLERANCES UNLESS OTHERWISE SPECIFIED | | |
| Dr M PESSON | 2006/11/14 | ANGULAR | 0.X ± 0.3 | size A2 Scale 2:1 |
| Eng P LEGARE | 2006/11/14 | LINEAR | 0.XX ± 0.1 | ECN LS08-0119 |
| Chr P LEGARE | 2006/11/14 | $\sigma^{\circ} \pm 2^{\circ}$ | 0.XXX ± 0.05 | Spec ref |
| Appr P LEGARE | 2006/11/14 | Product family | | |
| SUB MALE DM HE501 series | | ang no | C01-8637-1740 | |
| with right angle contact | | Rev. | C | |
| catalog no | | CUSTOMER | sheet 7 of 9 | |

Copyright fci. **fci**

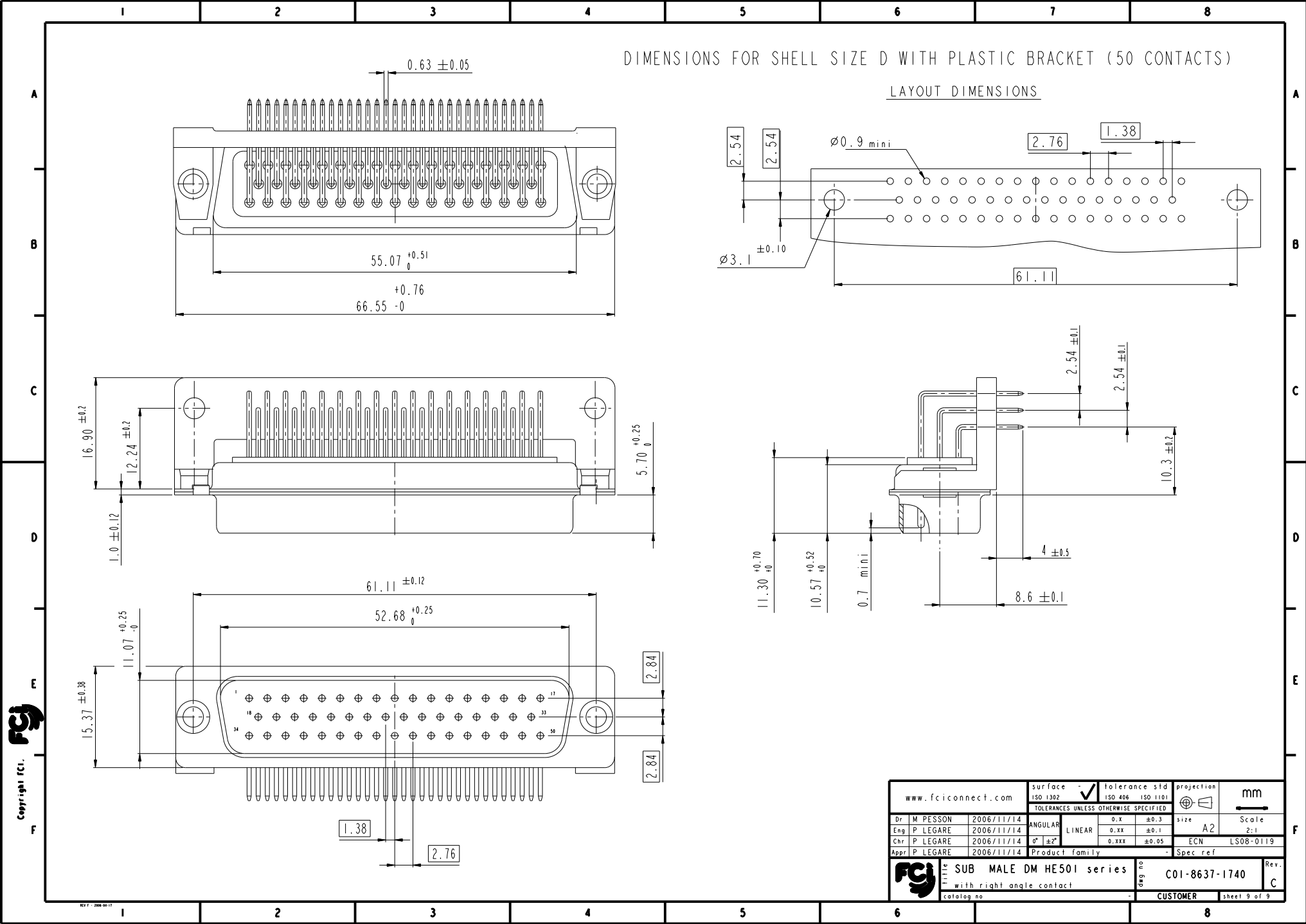


DIMENSION FOR SHELL D WITH METAL BRACKET (50 CONTACTS)

LAYOUT DIMENSIONS

Copyright fci. **fci**

| | | | | |
|-------------------------------------|------------|---------------------------------------|-----------------------------------|-------------------|
| www.fciconnect.com | | surface - ISO 1302 | tolerance std ISO 406 ISO 1101 | projection mm |
| | | TOLERANCES UNLESS OTHERWISE SPECIFIED | | |
| Dr M PESSON | 2006/11/14 | ANGULAR | 0.X ±0.3 | size A2 Scale 2:1 |
| Eng P LEGARE | 2006/11/14 | LINEAR | 0.XX ±0.1 | ECN LS08-0119 |
| Chr P LEGARE | 2006/11/14 | 0° ±2° | 0.XXX ±0.05 | Spec ref |
| Appr P LEGARE | 2006/11/14 | Product family | | |
| fci SUB MALE DM HE501 series | | ang no | C01-8637-1740 | |
| with right angle contact | | Rev. | C | |
| catalog no | | CUSTOMER | sheet 8 of 9 | |



DIMENSIONS FOR SHELL SIZE D WITH PLASTIC BRACKET (50 CONTACTS)
LAYOUT DIMENSIONS

Copyright fci. **fci**

| | | | | |
|-------------------------------------|------------|---------------------------------------|-----------------------------------|-------------------|
| www.fciconnect.com | | surface - ISO 1302 | tolerance std ISO 406 ISO 1101 | projection mm |
| | | TOLERANCES UNLESS OTHERWISE SPECIFIED | | |
| Dr M PESSON | 2006/11/14 | ANGULAR | 0.X ±0.3 | size A2 Scale 2:1 |
| Eng P LEGARE | 2006/11/14 | LINEAR | 0.XX ±0.1 | ECN LS08-0119 |
| Chr P LEGARE | 2006/11/14 | 0° ±2° | 0.XXX ±0.05 | Spec ref |
| Appr P LEGARE | 2006/11/14 | Product family | | |
| fci SUB MALE DM HE501 series | | ang no | C01-8637-1740 | |
| with right angle contact | | Rev. | C | |
| catalog no | | CUSTOMER | sheet 9 of 9 | |