



Chipsmall Limited consists of a professional team with an average of over 10 year of expertise in the distribution of electronic components. Based in Hongkong, we have already established firm and mutual-benefit business relationships with customers from,Europe,America and south Asia,supplying obsolete and hard-to-find components to meet their specific needs.

With the principle of “Quality Parts,Customers Priority,Honest Operation,and Considerate Service”,our business mainly focus on the distribution of electronic components. Line cards we deal with include Microchip,ALPS,ROHM,Xilinx,Pulse,ON,Everlight and Freescale. Main products comprise IC,Modules,Potentiometer,IC Socket,Relay,Connector.Our parts cover such applications as commercial,industrial, and automotives areas.

We are looking forward to setting up business relationship with you and hope to provide you with the best service and solution. Let us make a better world for our industry!



Contact us

Tel: +86-755-8981 8866 Fax: +86-755-8427 6832

Email & Skype: info@chipsmall.com Web: www.chipsmall.com

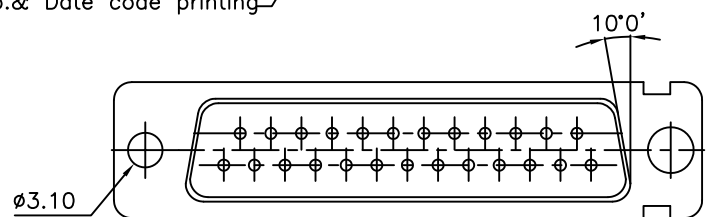
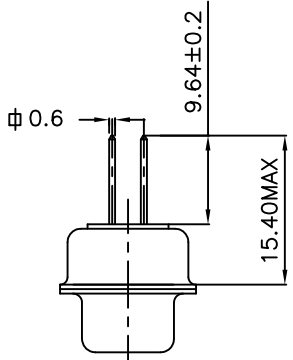
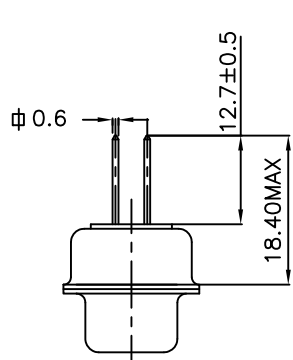
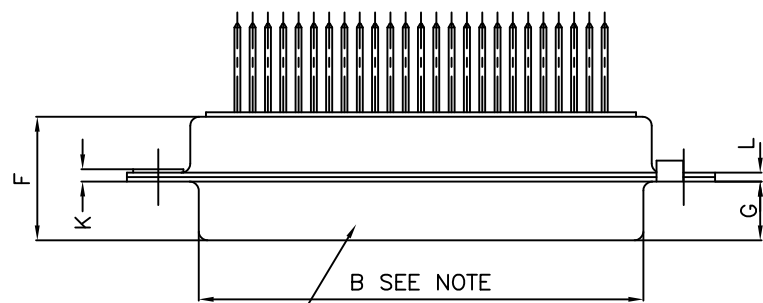
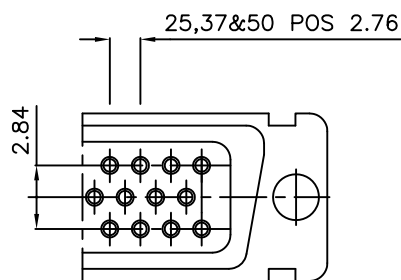
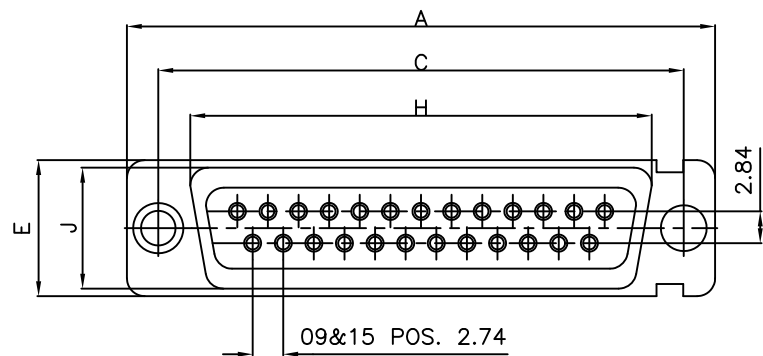
Address: A1208, Overseas Decoration Building, #122 Zhenhua RD., Futian, Shenzhen, China



STD MOUNTING

FLOAT MOUNTING

LAYOUT OF 50 POS.CONNECTOR



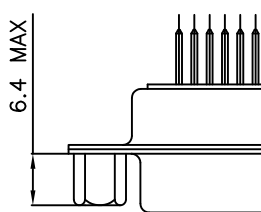
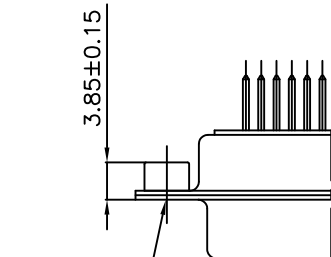
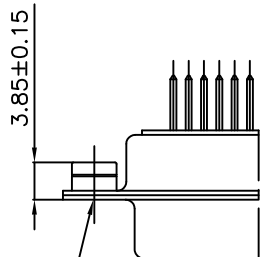
Part No.& Date code printing

VIEW OF MATING FACE

M3 RIVETTING NUT

UNC 4-40 RIVETTING NUT

HEXAGONAL FEMALE SCREW- LOCK UNC 4-40



OPTION:- L

OPTION:- O

OPTION:- V

50	P	66.65	52.68	61.11	11.08	14.99	11.09	5.85	55.07	13.31	1.50	1.0
	S	66.65	52.30	61.11	10.62	14.99	11.21	6.05	55.07	13.31	1.10	0.8
37	P	68.94	55.30	63.50	8.23	12.17	11.09	5.85	57.45	10.46	1.50	1.0
	S	68.94	54.71	63.50	7.77	12.17	11.21	6.05	57.45	10.46	1.10	0.8
25	P	52.65	38.84	47.04	8.23	12.17	11.07	5.85	41.02	10.46	1.10	0.8
	S	52.65	38.25	47.04	7.77	12.17	11.21	6.05	41.02	10.46	1.10	0.8
15	P	38.76	25.12	33.32	8.23	12.17	10.99	5.85	27.25	10.46	1.10	0.8
	S	38.76	24.54	33.32	7.77	12.17	11.21	6.05	27.25	10.46	1.10	0.8
09	P	30.43	16.79	24.99	8.23	12.17	10.99	5.85	19.02	10.46	1.10	0.8
	S	30.43	16.21	24.99	7.77	12.17	11.21	6.05	19.02	10.46	1.10	0.8
SHELL SIZE		A-0	B-0	C ±0.12	D-0	E-0	F MAX	G-0	H-0	J-0	K±0.20	L-0
		+0.76	+0.25	±0.12	+0.25	+0.76		+0.15	+0.51	+0.51		+0.22

NOTE:-INSIDE DIMENSIONS OF MALE AND OUTSIDE DIMENSIONS OF THE FEMALE CONNECTOR.

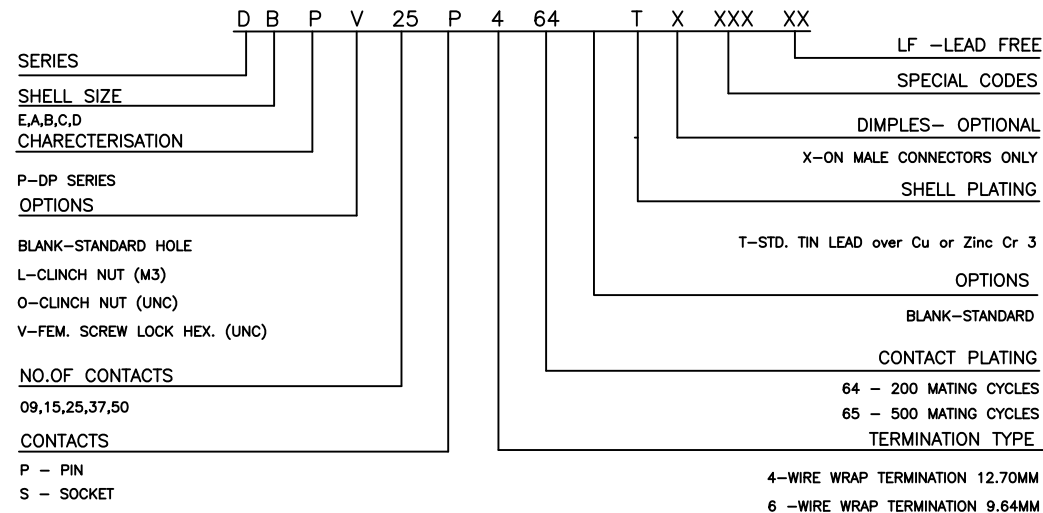
TECHNICAL SPECIFICATIONS

- SHELLS : TIN/ZINC PLATED
- INSULATOR MATERIAL : SELF EXTINGUISHING BLACK POLYESTER UL CLASS 94V0
- THE HOUSING WILL WITHSTAND EXPOSURE TO 260-265°C
- IF WE USE PROTECTIVE ADHESIVE (type Kapton or Teflon)
- OR PROTECTIVE METALLIC DEVICE
- CONTACTS DIA ON ACTIVE AREA : 1 MM.
- CONTACTS MATERIAL : COPPER ALLOY
- CONTACT PLATING : GOLD OVER NICKEL
- OPERATING TEMPERATURE : -55°C +125°C
- OPERATING CURRENT : 7.5 A PER CONTACT
- CONTACT RESISTANCE : <7.3 mΩ
- INSULATION RESISTANCE : ≥5000 MΩ
- MAXIMUM VOLTAGE : 1000 V.r.m.s
- MECHANICAL ENDURANCE : 500 MATINGS FOR CODE 65
- 200 MATINGS FOR CODE 64
- DAMP HEAT : 56 DAYS FOR CODE 65
- 21 DAYS FOR CODE 64

LEAD FREE NOTE

"This LF product meets European Union Directives and other country regulations as described in GS-22-008" Packaging as per GS-14-920

ORDERING INFORMATION



mat'l. code SEE NOTE 4		surface ISO 1302 ✓	tolerance ISO 406 ISO 1101	projection MM	product family
ltr C		ecn no i06-0074		title D-SUB W/W CONNECTOR (DP SERIES WITH ASSEMBLY OPTIONS)	
dr GVJ		date 2006/06/08		dwg no C-DSUB-0149	
D		AMR		sheet 1 of 1	
				size A3	
				type Product Customer Drawing	
sheet index	revision sheet 1	D			