



Chipsmall Limited consists of a professional team with an average of over 10 year of expertise in the distribution of electronic components. Based in Hongkong, we have already established firm and mutual-benefit business relationships with customers from,Europe,America and south Asia,supplying obsolete and hard-to-find components to meet their specific needs.

With the principle of “Quality Parts,Customers Priority,Honest Operation,and Considerate Service”,our business mainly focus on the distribution of electronic components. Line cards we deal with include Microchip,ALPS,ROHM,Xilinx,Pulse,ON,Everlight and Freescale. Main products comprise IC,Modules,Potentiometer,IC Socket,Relay,Connector.Our parts cover such applications as commercial,industrial, and automotives areas.

We are looking forward to setting up business relationship with you and hope to provide you with the best service and solution. Let us make a better world for our industry!



Contact us

Tel: +86-755-8981 8866 Fax: +86-755-8427 6832

Email & Skype: info@chipsmall.com Web: www.chipsmall.com

Address: A1208, Overseas Decoration Building, #122 Zhenhua RD., Futian, Shenzhen, China



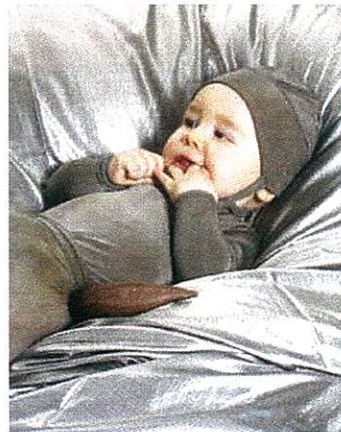


Technical Data Sheet

PN# 1101301180

MedTex™ P-180

- Purpose: Wound Care, Antimicrobial products and Garments
- Description: High ionic silver release plated nylon elastic knit single direction
- Surface Resistance: Average <5 Ohms/
- Plating: 99.9% pure silver
- Abrasion Resistance: 10,0000 cycles
- Temperature Range: -30c to +90c
- Total Thickness: 0.55mm
- Weight: 224 g /m²
- Stretch: Double stretch direction (wrap and weft)
- Roll Lengths: 50 LY average
- Roll Width: 135cm
- 78% Nylon + 22% elastormer



A Woman's Owned Small Business

VTT/Shieldex Trading USA
4502 Rt-31 Palmyra, NY, 14522

Statex Productions & Vertriebs GmbH
Kleiner Ort 11 28357 Bremen Germany
Tel: +49 421 275047/8, Fax: +49 421 273643
info@statex.de

Phone: 315-597-1674
Fax: 315-597-6687
Email: whoge@rochester.rr.com
Www.shieldextrading.net


©2010 VTT
Rev I.S.10