



Chipsmall Limited consists of a professional team with an average of over 10 year of expertise in the distribution of electronic components. Based in Hongkong, we have already established firm and mutual-benefit business relationships with customers from,Europe,America and south Asia,supplying obsolete and hard-to-find components to meet their specific needs.

With the principle of “Quality Parts,Customers Priority,Honest Operation,and Considerate Service”,our business mainly focus on the distribution of electronic components. Line cards we deal with include Microchip,ALPS,ROHM,Xilinx,Pulse,ON,Everlight and Freescale. Main products comprise IC,Modules,Potentiometer,IC Socket,Relay,Connector.Our parts cover such applications as commercial,industrial, and automotives areas.

We are looking forward to setting up business relationship with you and hope to provide you with the best service and solution. Let us make a better world for our industry!



Contact us

Tel: +86-755-8981 8866 Fax: +86-755-8427 6832

Email & Skype: info@chipsmall.com Web: www.chipsmall.com

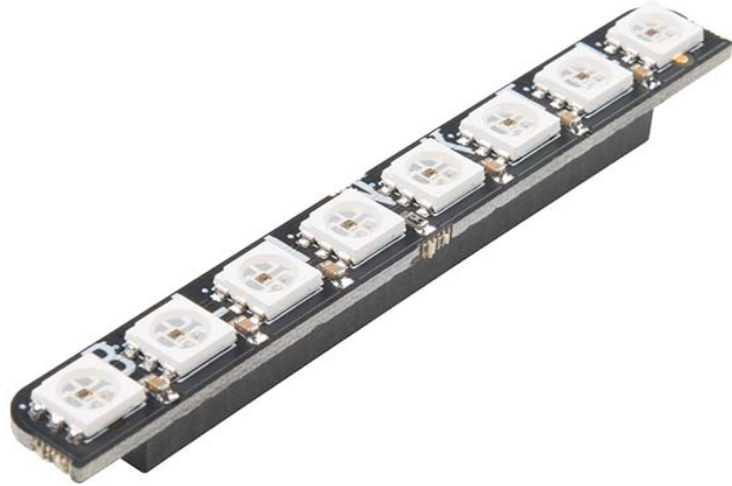
Address: A1208, Overseas Decoration Building, #122 Zhenhua RD., Futian, Shenzhen, China





Pimoroni Blink!

DEV-14038



Description: The Pimoroni Blink! is a “shield” for the Raspberry Pi, equipped with eight super-bright and addressable RGB LEDs that make it ideal for adding visual notifications to your Pi. Each LED is individually controllable and dimmable, allowing you to create gradients, pulsing effects, or just flash them on and off like crazy.

Each Pimoroni Blink! easily snaps on top of a Raspberry Pi equipped with a 40-pin (2x20) GPIO. Pimoroni has created a GitHub repository bundling the Blink! software with a set of examples to get you started in an easy-to-use Python module, so all you have to worry about is setting the color you want each pixel to be.

Note: Be careful to plug in your Blink! the correct way; it has curves on the top that match the corners of any Raspberry Pi.

Features:

- Eight RGB LED (APA102)
- Individually controllable pixels
- Sits directly on top of your Pi in a tiny footprint
- Fits inside most Pi cases
- Comes fully assembled