



Chipsmall Limited consists of a professional team with an average of over 10 year of expertise in the distribution of electronic components. Based in Hongkong, we have already established firm and mutual-benefit business relationships with customers from,Europe,America and south Asia,supplying obsolete and hard-to-find components to meet their specific needs.

With the principle of “Quality Parts,Customers Priority,Honest Operation,and Considerate Service”,our business mainly focus on the distribution of electronic components. Line cards we deal with include Microchip,ALPS,ROHM,Xilinx,Pulse,ON,Everlight and Freescale. Main products comprise IC,Modules,Potentiometer,IC Socket,Relay,Connector.Our parts cover such applications as commercial,industrial, and automotives areas.

We are looking forward to setting up business relationship with you and hope to provide you with the best service and solution. Let us make a better world for our industry!



## Contact us

Tel: +86-755-8981 8866 Fax: +86-755-8427 6832

Email & Skype: info@chipsmall.com Web: www.chipsmall.com

Address: A1208, Overseas Decoration Building, #122 Zhenhua RD., Futian, Shenzhen, China





## NFC-RFID Expansion Board for Onion Omega

DEV-14634

The NFC-RFID Expansion Board will bring a new world of exciting functionality and application to your Omega2 module. As with other expansions, it will plug into your Onion Expansion, Arduino or Power Dock, and provide you with both NFC and RFID communication. This board makes use of the PN532 controller chip and is embedded in most smart phones and devices that support NFC. It can read and write to tags and cards, communicate with phones (for example payment processing), and 'act' like a NFC tag.

NFC (Near Field Communications) is a way for two devices very close to each other to communicate. It is an extension of RFID, so anything you can do with RFID you can do with NFC. Since it can read and write tags, you can use this for RFID-tag projects as well.

The Onion Omega boards we carry are separated into three different categories: Mainboard, Dock and Expansion Board. This board falls into the Expansion Board category, meaning you will need an Omega Dock that is equipped with a 30-pin Expansion Header like the Expansion Dock or Arduino Dock R2.

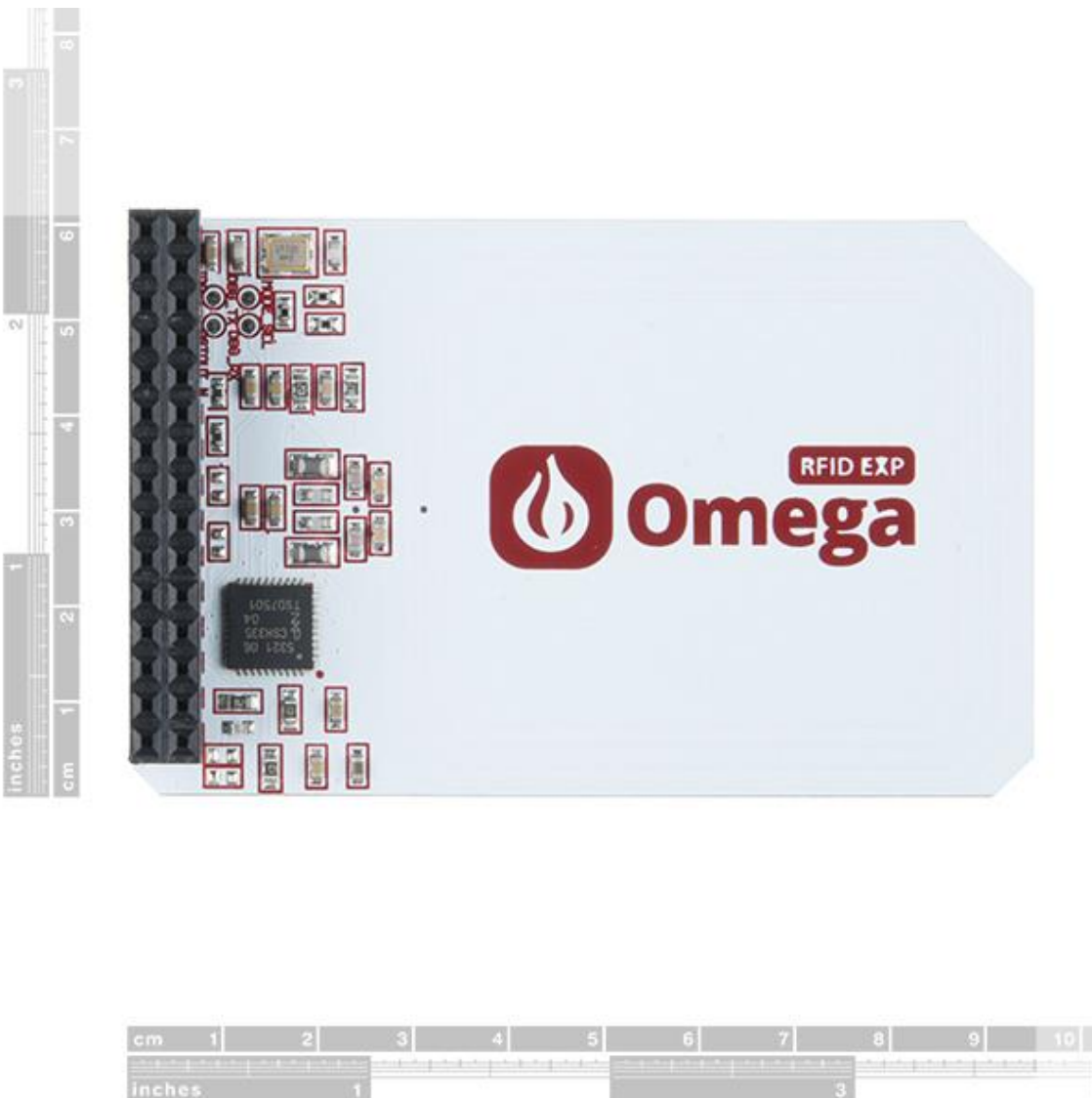
Note: You will only be able to read MIFARE Classic® tags, not write. If you wish to do both you will need to make sure to use a MIFARE Ultralight® tag instead.

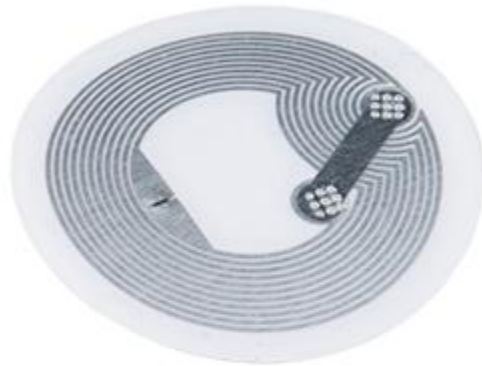
#### INCLUDES

- 1x NFC-RFID Expansion Board
- 2x NFC-RFID stickers with 100 bytes of storage

#### DOCUMENTS

- NFC-RFID Expansion Hardware Overview
- How to use the Ethernet Expansion





<https://www.sparkfun.com/products/14634> 4-16-18