



Chipsmall Limited consists of a professional team with an average of over 10 year of expertise in the distribution of electronic components. Based in Hongkong, we have already established firm and mutual-benefit business relationships with customers from,Europe,America and south Asia,supplying obsolete and hard-to-find components to meet their specific needs.

With the principle of “Quality Parts,Customers Priority,Honest Operation,and Considerate Service”,our business mainly focus on the distribution of electronic components. Line cards we deal with include Microchip,ALPS,ROHM,Xilinx,Pulse,ON,Everlight and Freescale. Main products comprise IC,Modules,Potentiometer,IC Socket,Relay,Connector.Our parts cover such applications as commercial,industrial, and automotives areas.

We are looking forward to setting up business relationship with you and hope to provide you with the best service and solution. Let us make a better world for our industry!



Contact us

Tel: +86-755-8981 8866 Fax: +86-755-8427 6832

Email & Skype: info@chipsmall.com Web: www.chipsmall.com

Address: A1208, Overseas Decoration Building, #122 Zhenhua RD., Futian, Shenzhen, China



COUNT	DESCRIPTION OF REVISIONS	BY	CHKD	DATE	COUNT	DESCRIPTION OF REVISIONS	BY	CHKD	DATE
△					△				
△					△				

APPLICABLE STANDARD				
RATING	OPERATING TEMPERATURE RANGE	-30°C TO +85°C (NOTE 1)	STORAGE TEMPERATURE RANGE	-10°C TO +60°C
	VOLTAGE	250 V	APPLICABLE CONTACT	
	CURRENT	2 A	APPLICABLE CONNECTOR	
			APPLICABLE CABLE	

SPECIFICATIONS

ITEM	TEST METHOD	REQUIREMENTS	QT	AT
------	-------------	--------------	----	----

CONSTRUCTION				
GENERAL EXAMINATION	VISUALLY AND BY MEASURING INSTRUMENT.	ACCORDING TO DRAWING.	○	○
MARKING	CONFIRMED VISUALLY.		○	○

ELECTRICAL CHARACTERISTICS				
CONTACT RESISTANCE	100 mA (DC OR 1000 Hz).	80 mΩ MAX. (NOTE 2)	○	—
CONTACT RESISTANCE MILLIVOLT LEVEL METHOD.	20 mV MAX. mA (DC OR 1000 Hz).	mΩ MAX.	—	—
INSULATION RESISTANCE	V DC	MΩ MIN.	—	—
VOLTAGE PROOF	V AC FOR 1 min	NO FLASHOVER OR BREAKDOWN.	—	—

MECHANICAL CHARACTERISTICS				
CONTACT INSERTION AND EXTRACTION FORCES	BY STEEL GAUGE.	INSERTION FORCE EXTRACTION FORCE	N MAX. N MIN.	— —
INSERTION AND WITHDRAWAL FORCES	MEASURED BY APPLICABLE CONNECTOR.	INSERTION FORCE EXTRACTION FORCE	N MAX. N MIN.	— —
MECHANICAL OPERATION	30 TIMES INSERTIONS AND EXTRACTIONS	① CONTACT RESISTANCE: 80 mΩ MAX. ② NO DAMAGE, CRACK AND LOOSENESS OF PARTS.		○ —
VIBRATION	FREQUENCY 10 TO 55 Hz, TOTAL AMPLITUDE 1.5 mm, — m/s ² AT ≥ 1 FOR 3 DIRECTIONS.	① NO ELECTRICAL DISCONTINUITY OF 10 mΩ. ② CONTACT RESISTANCE: 80 mΩ MAX. ③ NO DAMAGE, CRACK AND LOOSENESS OF PARTS.		○ —
SHOCK	490 m/s ² DURATION OF PULSE 11 ms AT 3 TIMES FOR 3 DIRECTIONS.	① NO ELECTRICAL DISCONTINUITY OF 10 mΩ. ② CONTACT RESISTANCE: 80 mΩ MAX. ③ NO DAMAGE, CRACK AND LOOSENESS OF PARTS.		○ —

ENVIRONMENTAL CHARACTERISTICS				
DAMP HEAT (STEADY STATE)	EXPOSED AT C, %, h.	① CONTACT RESISTANCE: mΩ MAX. ② INSULATION RESISTANCE: MΩ MIN. ③ NO DAMAGE, CRACK AND LOOSENESS OF PARTS.		— —
RAPID CHANGE OF TEMPERATURE	TEMPERATURE -55 → -5 → -35 → +85 → 5 → 35°C TIME 30 → 10 → 15 → 30 → 10 → 15 min UNDER 5 CYCLES.	① CONTACT RESISTANCE: 80 mΩ MAX. ② INSULATION RESISTANCE: 1000 MΩ. ③ NO DAMAGE, CRACK AND LOOSENESS OF PARTS.		○ —
RESISTANCE TO SOLDERING HEAT	SOLDER TEMPERATURE, IMMERSION, DURATION, C FOR s.	NO DEFORMATION OF CASE OF EXCESSIVE LOOSENESS OF THE TERMINALS.		— —
SOLDERABILITY	SOLDERED AT SOLDER TEMPERATURE, FOR IMMERSION DURATION, C s.	A NEW UNIFORM COATING OF SOLDER SHALL COVER A MINIMUM OF 95 % OF THE SURFACE BEING IMMersed.		— —

NOTE 2. INCLUDE THE TWO CONTACTS. (INCLUDE THE CABLE AWG#28 80mm.)

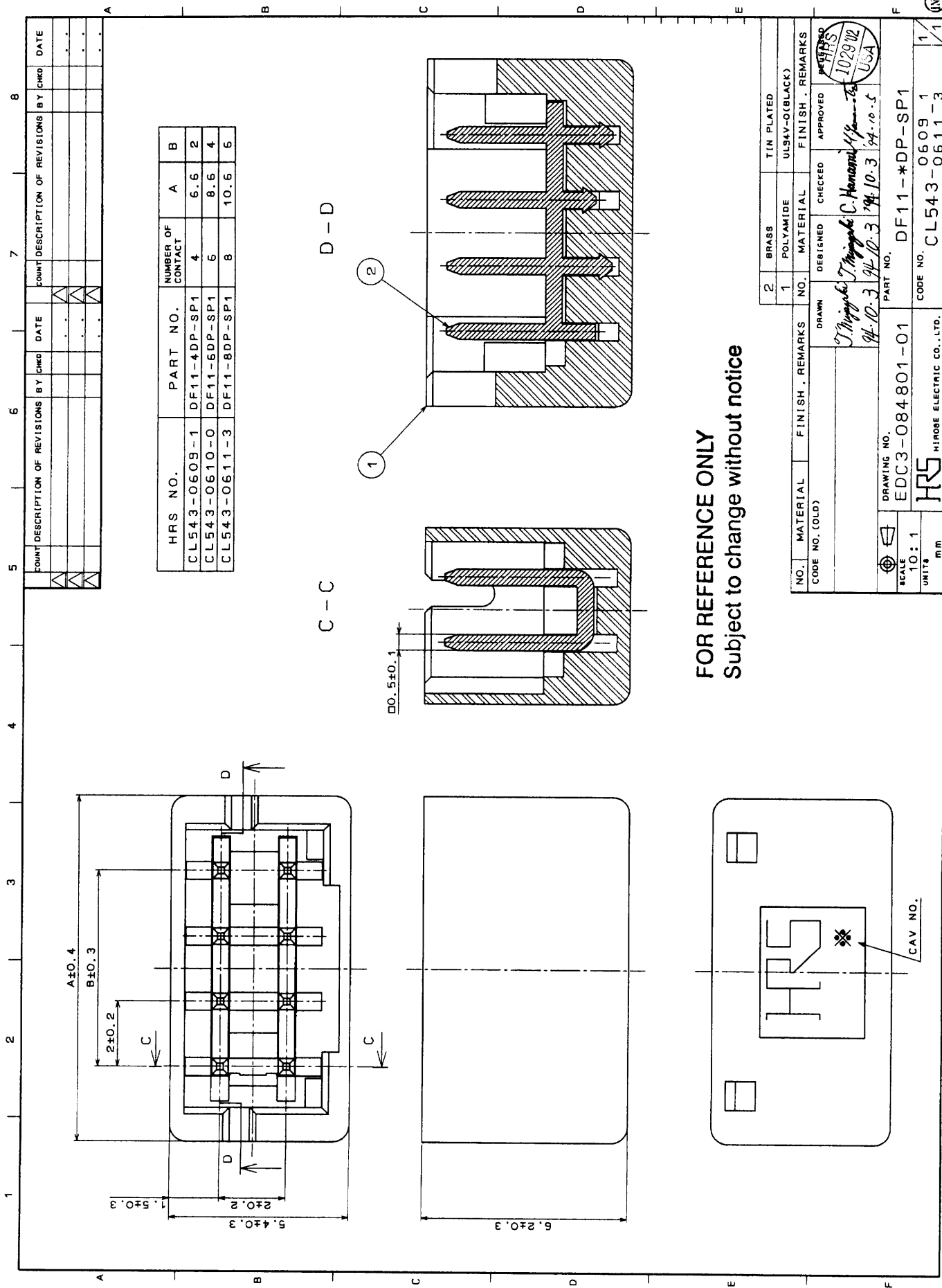
REMARKS	DRAWN	DESIGNED	CHECKED	APPROVED	RELEASED
NOTE 1 INCLUDE THE TEMPERATURE RISING BY TURNING ON ELECTRICITY. Unless otherwise specified, refer to MIL-STD-1344.	T. Miyazaki 94.9.29	T. Miyazaki 94.9.29	C. Hanami 94.10.3	U. Yamamoto 94.10.5	HRS 1029/02 USA

Note QT: Qualification Test AT: Assurance Test ○: Applicable Test

HRS HIROSE ELECTRIC CO., LTD.		SPECIFICATION SHEET		PART NO. DF11-X:DP-SP1	
CODE NO. (OLD) CL	DRAWING NO. ELC4-084801-01	CODE NO. CL543-0609-1	1/1	INC	

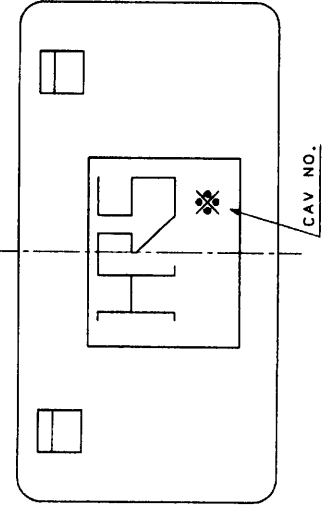
FOR REFERENCE ONLY
Subject to change without notice

TO



TO	

FOR REFERENCE ONLY
Subject to change without notice



NO.	MATERIAL	FINISH . REMARKS	DRAWN	DESIGNED	CHECKED	APPROVED	TIN PLATED
CODE NO. (OLD)			<i>J. Higuchi</i>	<i>C. Henami</i>	<i>H. Higuchi</i>	<i>10/29/02</i>	ULSKV-O(BLACK)
			94-10-3	94-10-3	94-10-5	USA	
DRAWING NO.		PART NO.					
EDC3-084801-01		DF11-*DP-SP1					
SCALE	10:1						
UNITS	M.M.						
HRS HIROSE ELECTRIC CO., LTD.		CODE NO.					
		CL543-0611-3					