



Chipsmall Limited consists of a professional team with an average of over 10 year of expertise in the distribution of electronic components. Based in Hongkong, we have already established firm and mutual-benefit business relationships with customers from,Europe,America and south Asia,supplying obsolete and hard-to-find components to meet their specific needs.

With the principle of “Quality Parts,Customers Priority,Honest Operation,and Considerate Service”,our business mainly focus on the distribution of electronic components. Line cards we deal with include Microchip,ALPS,ROHM,Xilinx,Pulse,ON,Everlight and Freescale. Main products comprise IC,Modules,Potentiometer,IC Socket,Relay,Connector.Our parts cover such applications as commercial,industrial, and automotives areas.

We are looking forward to setting up business relationship with you and hope to provide you with the best service and solution. Let us make a better world for our industry!



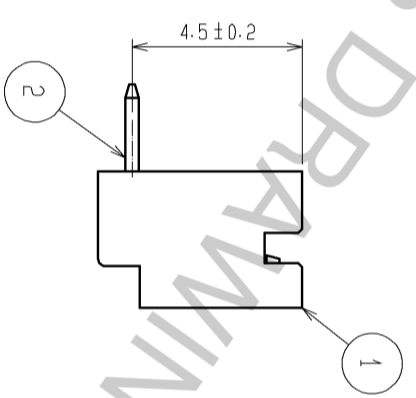
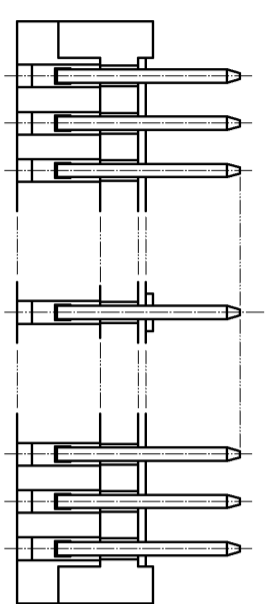
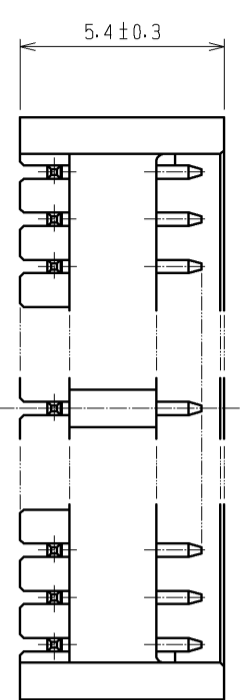
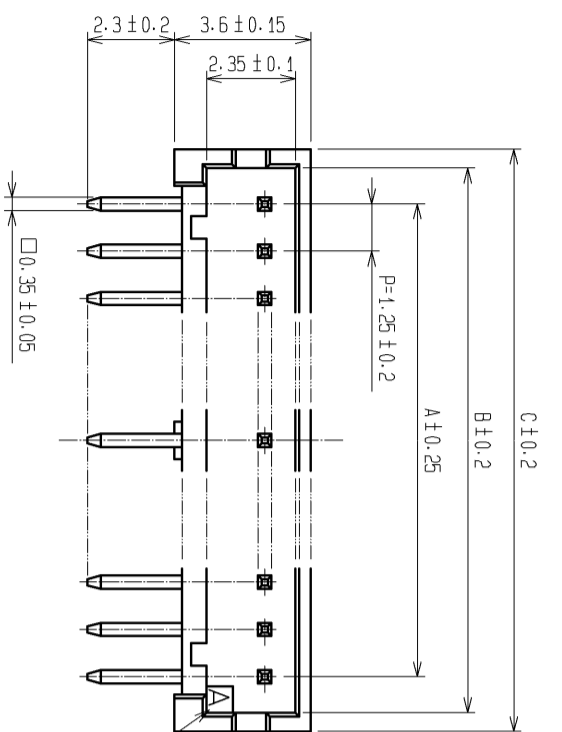
Contact us

Tel: +86-755-8981 8866 Fax: +86-755-8427 6832

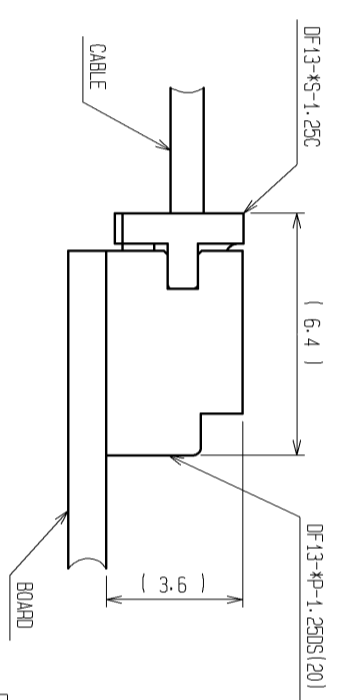
Email & Skype: info@chipsmall.com Web: www.chipsmall.com

Address: A1208, Overseas Decoration Building, #122 Zhenhua RD., Futian, Shenzhen, China

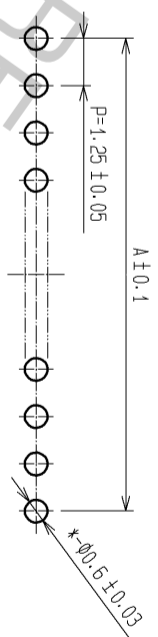




2 APPLICATION FIGURE

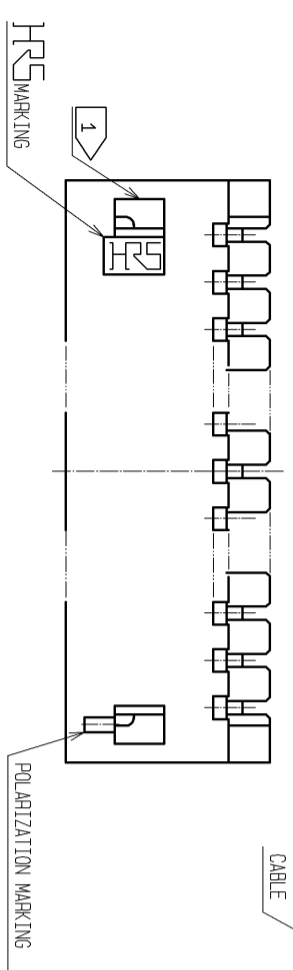


3 RECOMMENDED PATTERN



| PART No. | CODE No. | NUMBER OF CONTACTS | A | B | C |
|---------------------|-----------------|--------------------|-------|-------|-------|
| DF13-2P-1.25DS(20) | CL536-0151-7-20 | 2 | 1.25 | 3.15 | 4.15 |
| DF13-3P-1.25DS(20) | CL536-0152-0-20 | 3 | 2.50 | 4.40 | 5.40 |
| DF13-4P-1.25DS(20) | CL536-0153-2-20 | 4 | 3.75 | 5.65 | 6.65 |
| DF13-5P-1.25DS(20) | CL536-0154-5-20 | 5 | 5.00 | 6.90 | 7.90 |
| DF13-6P-1.25DS(20) | CL536-0155-8-20 | 6 | 6.25 | 8.15 | 9.15 |
| DF13-7P-1.25DS(20) | CL536-0156-0-20 | 7 | 7.50 | 9.40 | 10.40 |
| DF13-8P-1.25DS(20) | CL536-0157-3-20 | 8 | 8.75 | 10.65 | 11.65 |
| DF13-9P-1.25DS(20) | CL536-0158-6-20 | 9 | 10.00 | 11.90 | 12.90 |
| DF13-10P-1.25DS(20) | CL536-0159-9-20 | 10 | 11.25 | 13.15 | 14.15 |
| DF13-11P-1.25DS(20) | CL536-0160-8-20 | 11 | 12.50 | 14.40 | 15.40 |
| DF13-12P-1.25DS(20) | CL536-0161-0-20 | 12 | 13.75 | 15.65 | 16.65 |
| DF13-14P-1.25DS(20) | CL536-0163-6-20 | 14 | 16.25 | 18.15 | 19.15 |
| DF13-15P-1.25DS(20) | CL536-0164-9-20 | 15 | 17.50 | 19.40 | 20.40 |

- 1 WHEN THIS CONNECTOR HAS TWO OR THREE CONTACTS, THE LOCK OF CONNECTOR SHALL BE SET AT THE CENTER OF HOUSING. IN CASE THAT THE NUMBER OF CONTACTS IS MORE THAN FOUR, THE TWO LOCKS SHALL BE SET IN ACCORDANCE WITH THE DRAWINGS.
- 2 WHEN THIS CONNECTOR MATES WITH DF13-*S-1.25G, THE MATING LENGTH IS 6.4mm.
- 3 RECOMMENDED DIP POST DIA. : φ0.6±0.03



FORM NO. 229-1

| | | | | | |
|-------|-----------|------------------------------|--------|--------------------------|---------------------------------|
| 2 | BRASS | SURFACE: TIN PLATED 1μm min. | 4 | ELASTOMER | STOPPER, GRAY |
| 1 | POLYAMIDE | BEIGE(NATURALL), UL94V-0 | 3 | P S | ELECTROSTATIC PROTECTION, CLEAR |
| UNITS | | SCALE | COUNT | DESCRIPTION OF REVISIONS | |
| mm | | 5 : 1 | 2 | DIS-H-002247 | |
| NO. | | MATERIAL | FINISH | REMARKS | NO. |
| NO. | | MATERIAL | FINISH | REMARKS | NO. |

APPROVED : TY. OMA
 CHECKED : HK. UMEHARA
 DESIGNED : TS. KUMAZAWA
 DRAWN : AK. MURA

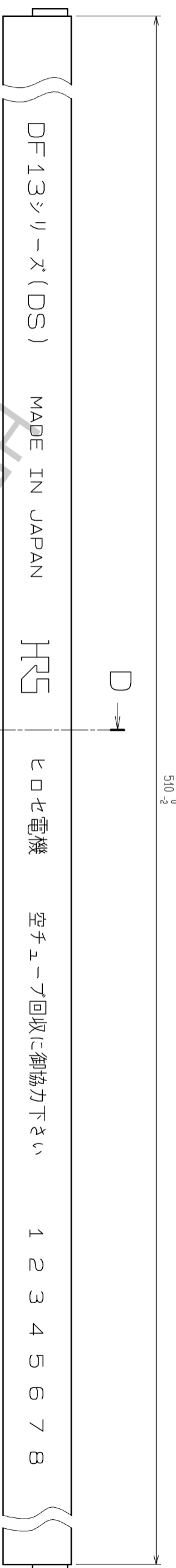
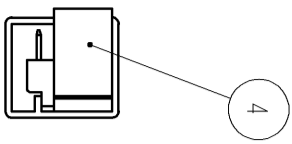
DATE: 06.09.25
 PART NO.: DF13-*P-1.25DS(20)
 CODE: CL536-

DATE: 07.07.17
 CHECKED: HK. UMEHARA

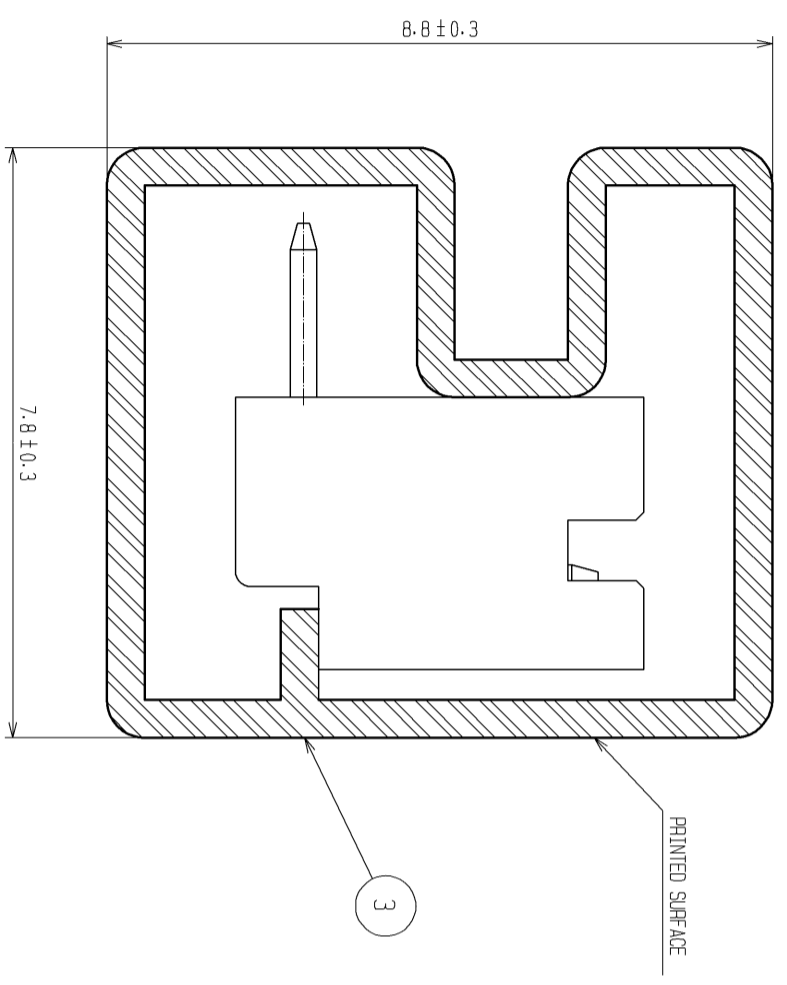
DATE: 06.09.25
 DRAWING NO.: EDC3-162420-03

DATE: 06.09.21
 CODE: CL536-





D-D (10:1)



| PART No. | CODE No. | NUMBER OF CONTACTS | QUANTITY OF CONNECTOR |
|----------------------|-----------------|--------------------|-----------------------|
| DF13-2P-1.25DS (20) | CL536-0151-7-20 | 2 | 115 |
| DF13-3P-1.25DS (20) | CL536-0152-0-20 | 3 | 89 |
| DF13-4P-1.25DS (20) | CL536-0153-2-20 | 4 | 72 |
| DF13-5P-1.25DS (20) | CL536-0154-5-20 | 5 | 61 |
| DF13-6P-1.25DS (20) | CL536-0155-8-20 | 6 | 52 |
| DF13-7P-1.25DS (20) | CL536-0156-0-20 | 7 | 46 |
| DF13-8P-1.25DS (20) | CL536-0157-3-20 | 8 | 41 |
| DF13-9P-1.25DS (20) | CL536-0158-6-20 | 9 | 37 |
| DF13-10P-1.25DS (20) | CL536-0159-9-20 | 10 | 34 |
| DF13-11P-1.25DS (20) | CL536-0160-8-20 | 11 | 31 |
| DF13-12P-1.25DS (20) | CL536-0161-0-20 | 12 | 29 |
| DF13-14P-1.25DS (20) | CL536-0163-6-20 | 14 | 25 |
| DF13-15P-1.25DS (20) | CL536-0164-9-20 | 15 | 23 |

NOTE4. MINIMUM UNIT OF PURCHASE SHALL BE THE QUANTITY OF CONNECTORS IN TUBE.

FORM NO. 229-2

| | |
|-------------|---------------------|
| HRS | |
| DRAWING NO. | EDC3-162420-03 |
| PART NO. | DF13-*P-1.25DS (20) |
| CODE NO. | CL536- |